

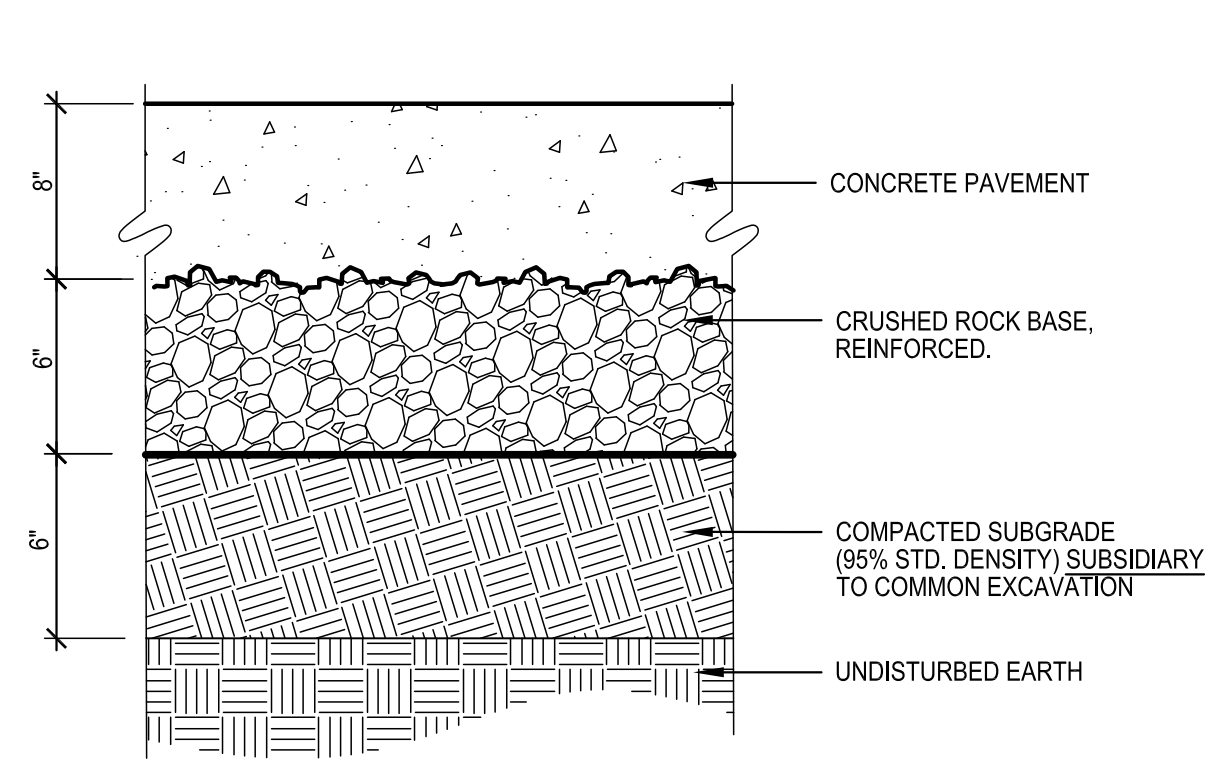
J:\PROJECTS\2018\1601010411_CAD_CHENEY PUMP STATIONS\1601010411_MISC.DWG
 J:\PROJECTS\2018\1601010411_CAD_CHENEY PUMP STATIONS\1601010411_MISC.DTL.S.DWG
 PLOTTED: Tuesday, November 06, 2018 @ 08:10PM

PAVING & INCIDENTAL DRAINAGE FOR
CHENEY PUMP STATION
 PAVEMENT REPLACEMENT & REPAIR

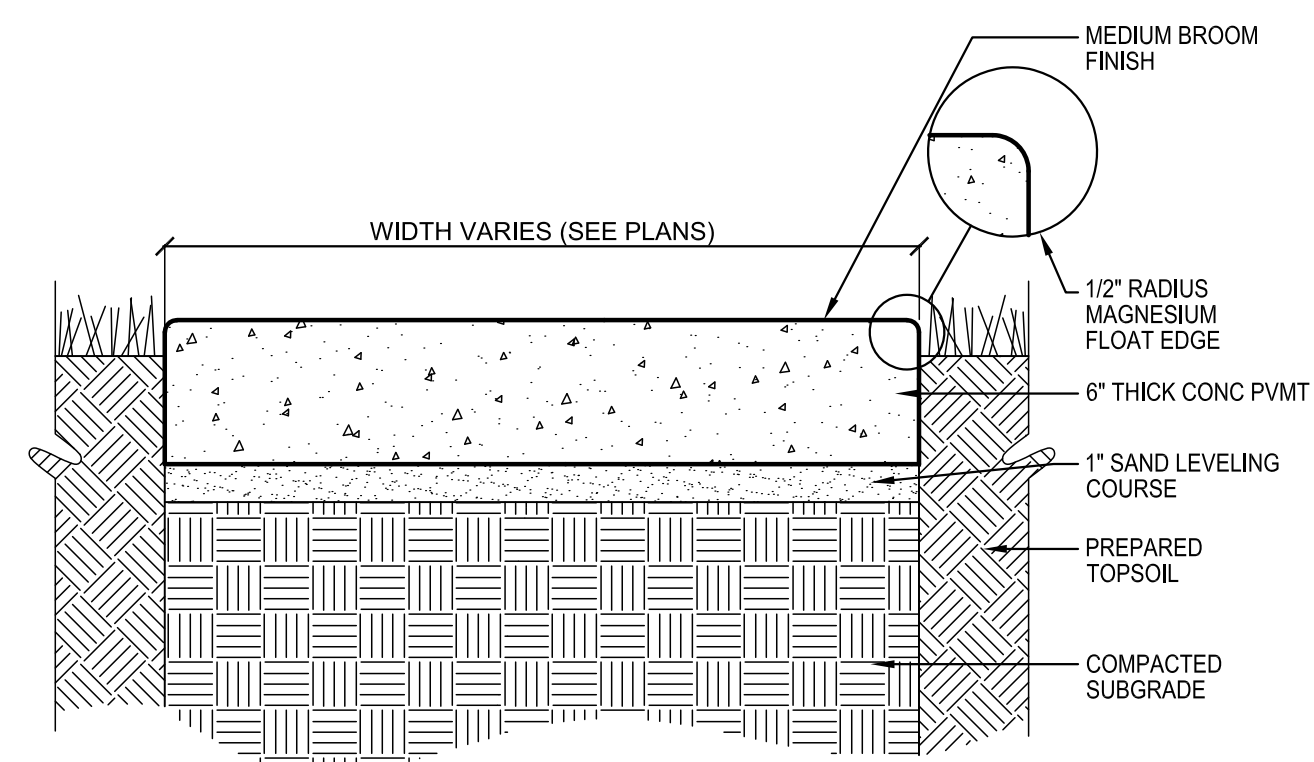
©2018
 MKEC Engineering
 All Rights Reserved
 www.mkec.com
 These drawings and their contents, including, but not limited to, all concepts, designs, & ideas are the exclusive property of MKEC Engineering (MKEC), and may not be used or reproduced in any way without the express consent of MKEC.

MISCELLANEOUS DETAILS

PROJECT NO.	448-90934	
DATE	NOV. 2018	
SCALE	NTS	
DESIGNED	DRAWN	CHECKED
SLF	BKS	SLF
NO.	REVISION	DATE

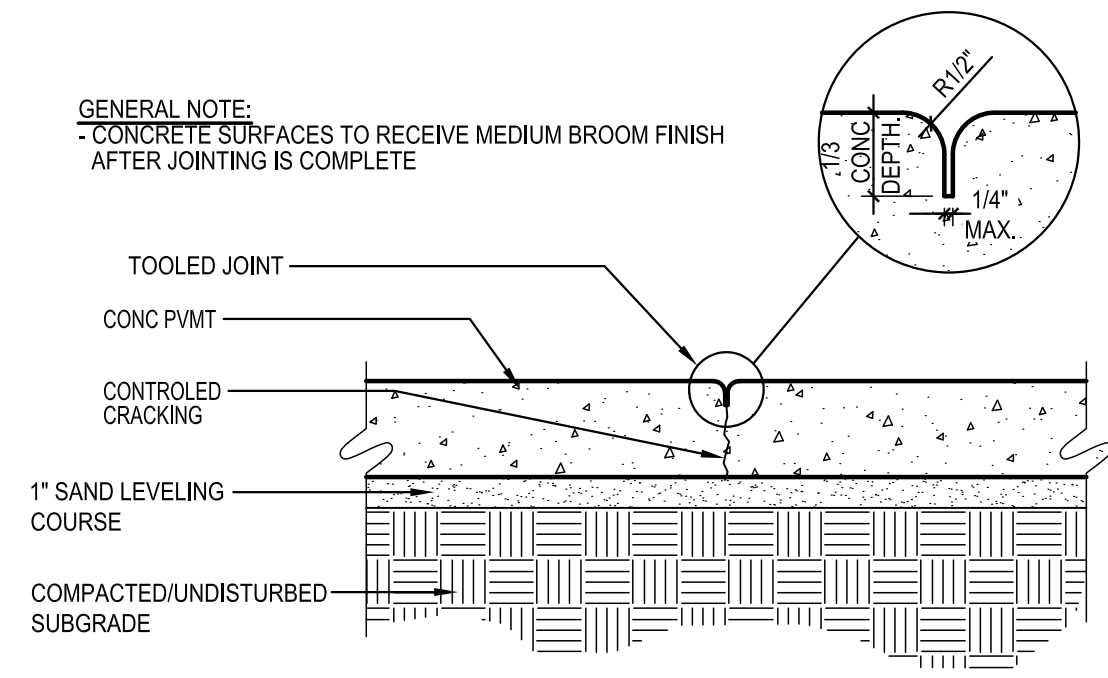


01 TYP. SECTION: 8" CONC. PAVEMENT
SCALE: NOT TO SCALE

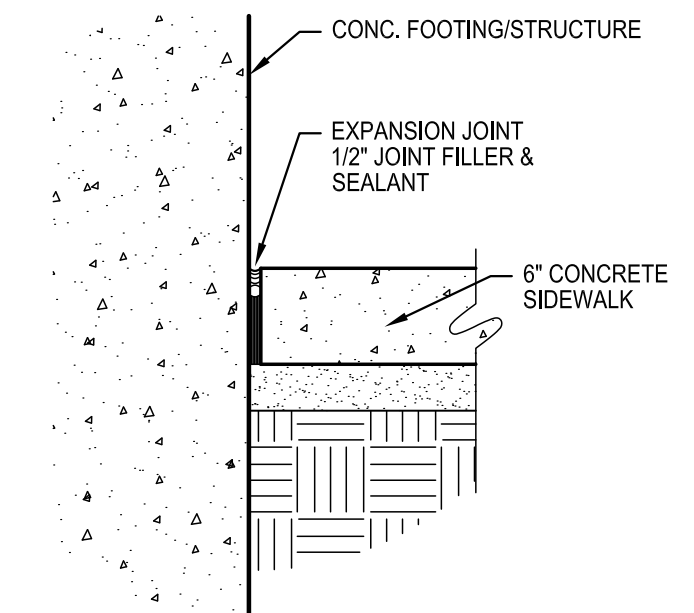


02 6" CONC. SIDEWALK
SCALE: NOT TO SCALE

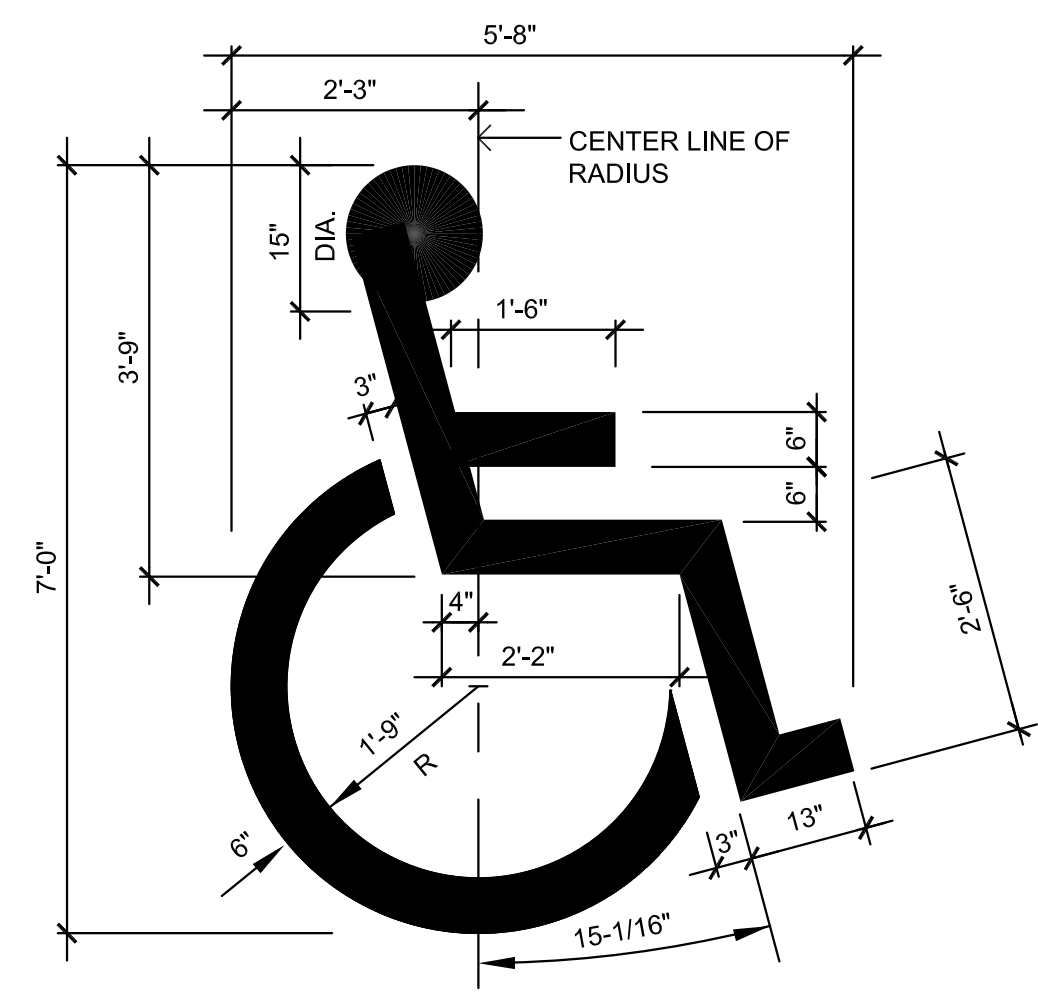
- NOTES:
- SIDEWALKS SHALL NOT EXCEED 5% SLOPE OR EXCEED A 2% CROSS SLOPE.
 - ALL JOINTS TO BE HAND-TOOLED.
 - SIDEWALK EXPANSION JOINTS TO RECEIVE GRAY SELF-LEVELING POLYURETHANE SEALANT



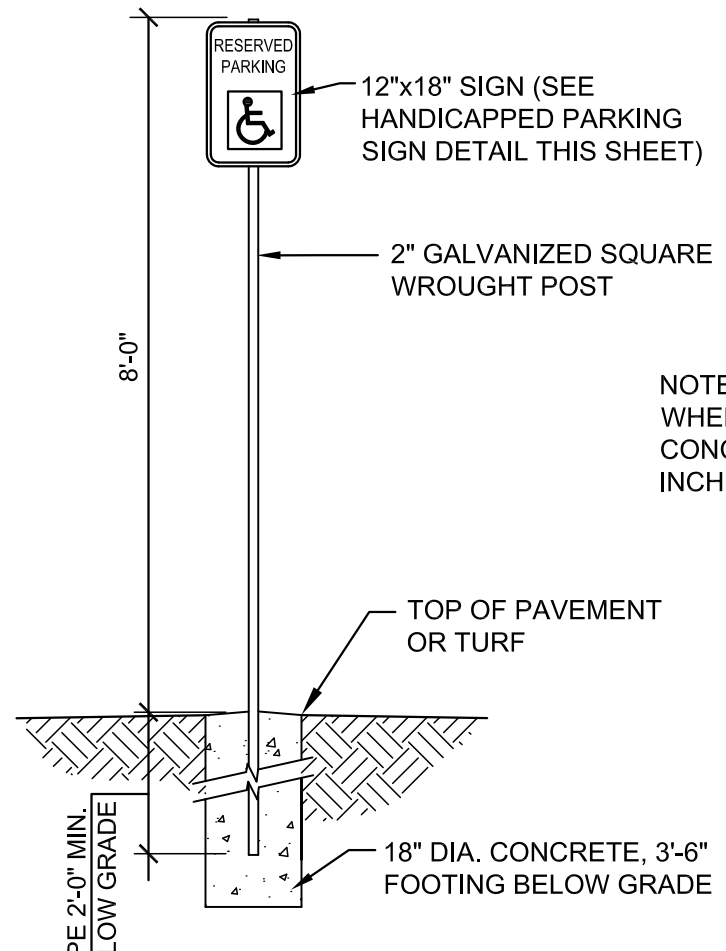
03 SIDEWALK TOOLED JOINT
SCALE: NOT TO SCALE



04 EXPANSION JOINT @ STRUCTURE
SCALE: NOT TO SCALE

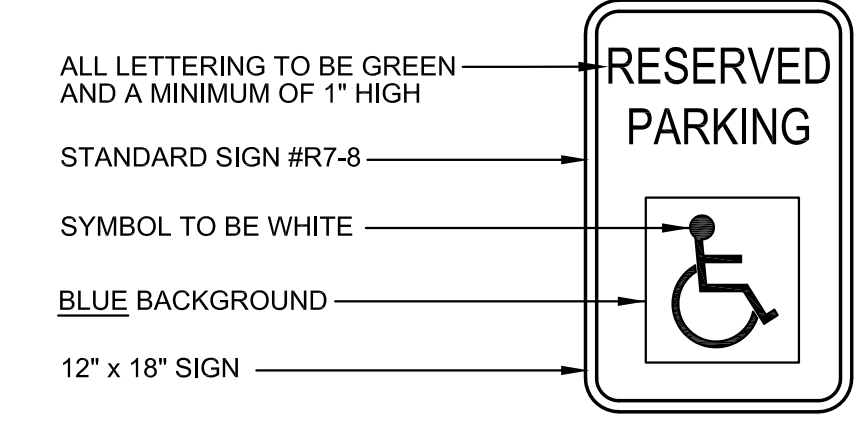


05 HANDICAP PAVEMENT SYMBOL
SCALE: NOT TO SCALE



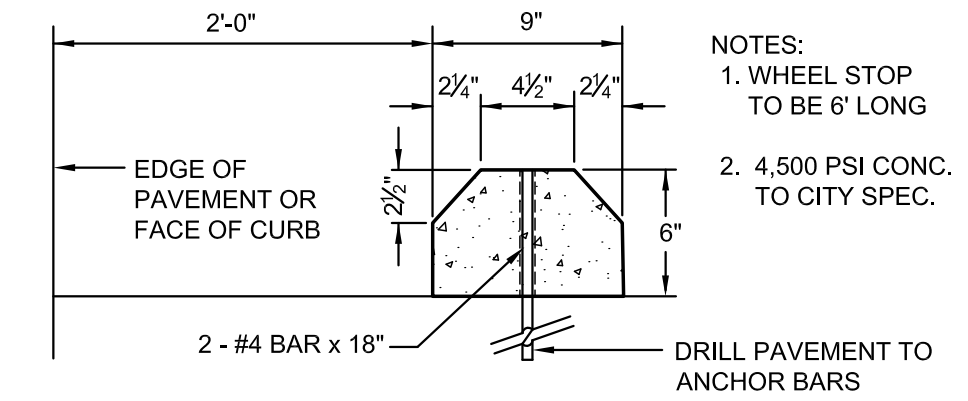
06 SIGN MOUNTING DETAIL
SCALE: NOT TO SCALE

- NOTES:
- WHERE SIGNS ARE BEHIND CURBS: CONCRETE POST BASES SHALL BE PLACED A MINIMUM OF 30 INCHES BEHIND THE BACK OF CURB.



07 HANDICAP PARKING SIGN
SCALE: NOT TO SCALE

- NOTES:
- ALL SIGNS TO BE 0.080" THICK ALUMINUM
 - ALL SIGNS SHALL CONFORM WITH ALL CURRENT A.D.A., FEDERAL, STATE AND LOCAL CODES AND REGULATIONS.
 - ONE AT EACH HANDICAP SPACE

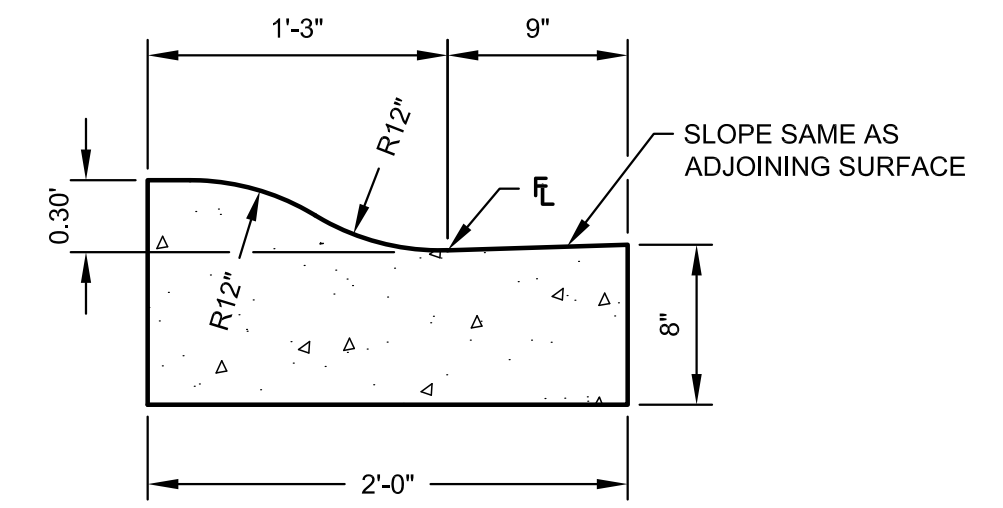


08 WHEEL STOP DETAIL
SCALE: NOT TO SCALE

- NOTES:
- WHEEL STOP TO BE 6" LONG
 - 4,500 PSI CONC. TO CITY SPEC.

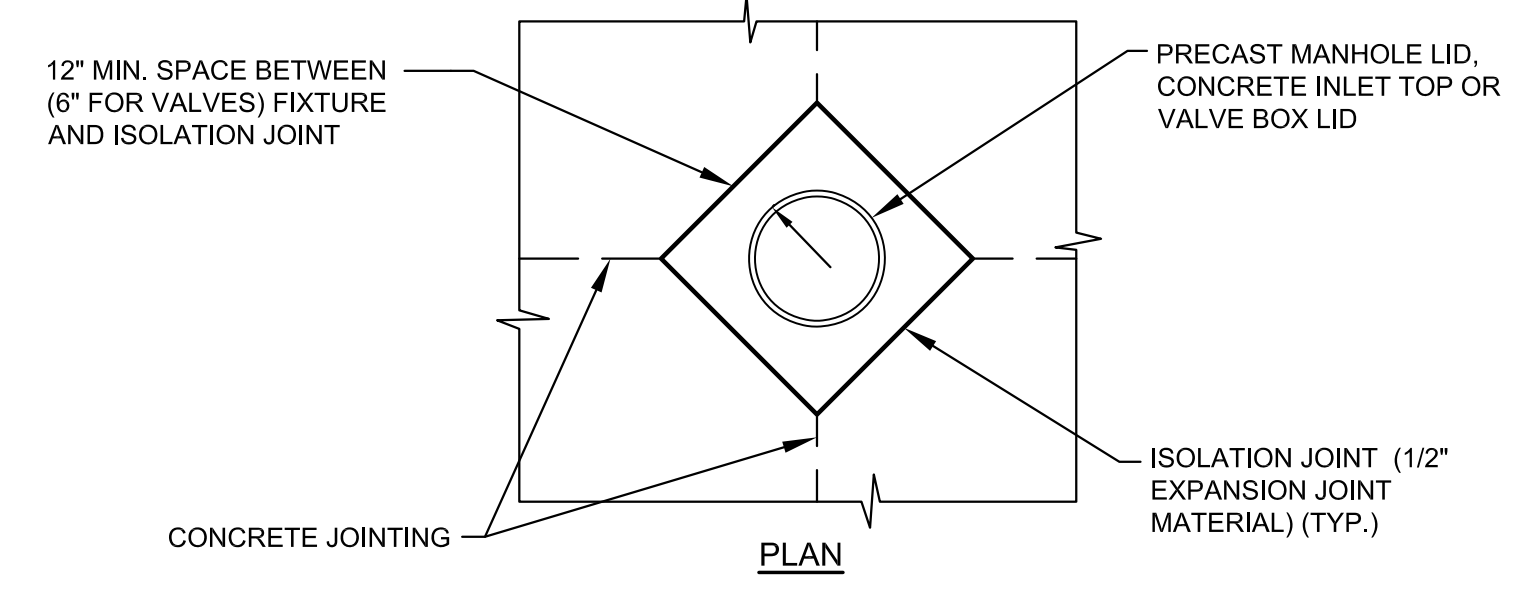
STRIPING NOTES

- UNLESS OTHERWISE NOTED, ALL ADA STALLS ARE 11' x 18' WITH A 5' LOADING AISLE.
- PARKING STRIPING SHALL BE 4" WIDE, YELLOW IN COLOR.
- ADA PARKING STALL LOADING AISLE STRIPING SHALL BE 4" WIDE, 2' O.C. @ 45° ANGLE, YELLOW IN COLOR.
- PAVEMENT MARKINGS SHALL BE AN UNDILUTED ALKYD TRAFFIC PAINT. APPLY PAINT WITH MECHANICAL EQUIPMENT TO PRODUCE PAVEMENT MARKINGS WITH UNIFORM, STRAIGHT EDGES. APPLY AT MANUFACTURER'S RECOMMENDED RATE TO PROVIDE A MINIMUM WET FILM THICKNESS OF 15 MILS. FOLLOW MANUFACTURER'S RECOMMENDATIONS FOR SURFACE PREPARATION AND APPLICATION.



09 CURB AND GUTTER DETAIL
SCALE: NOT TO SCALE

NOTE: CURB DIMENSIONS ARE APPROXIMATE. CONTRACTOR SHALL MATCH EXISTING DIMENSIONS WHEN ABUTTING EXISTING CURB.



10 TYPICAL UTILITY BOX-OUT DETAILS
SCALE: NOT TO SCALE

NOTE: CONTRACTOR SHALL CONSTRUCT BOX-OUTS AROUND ALL SURFACE UTILITY FIXTURES, AS SHOWN, WHEN FIXTURES FALL ON OR NEAR CONCRETE JOINTS, OR AS DIRECTED BY THE ENGINEER. ALL OTHER FIXTURES SHALL HAVE AN ISOLATION JOINT OR BOND BREAKER BETWEEN THEM AND CONCRETE PAVEMENT. COST SHALL BE SUBSIDIARY.