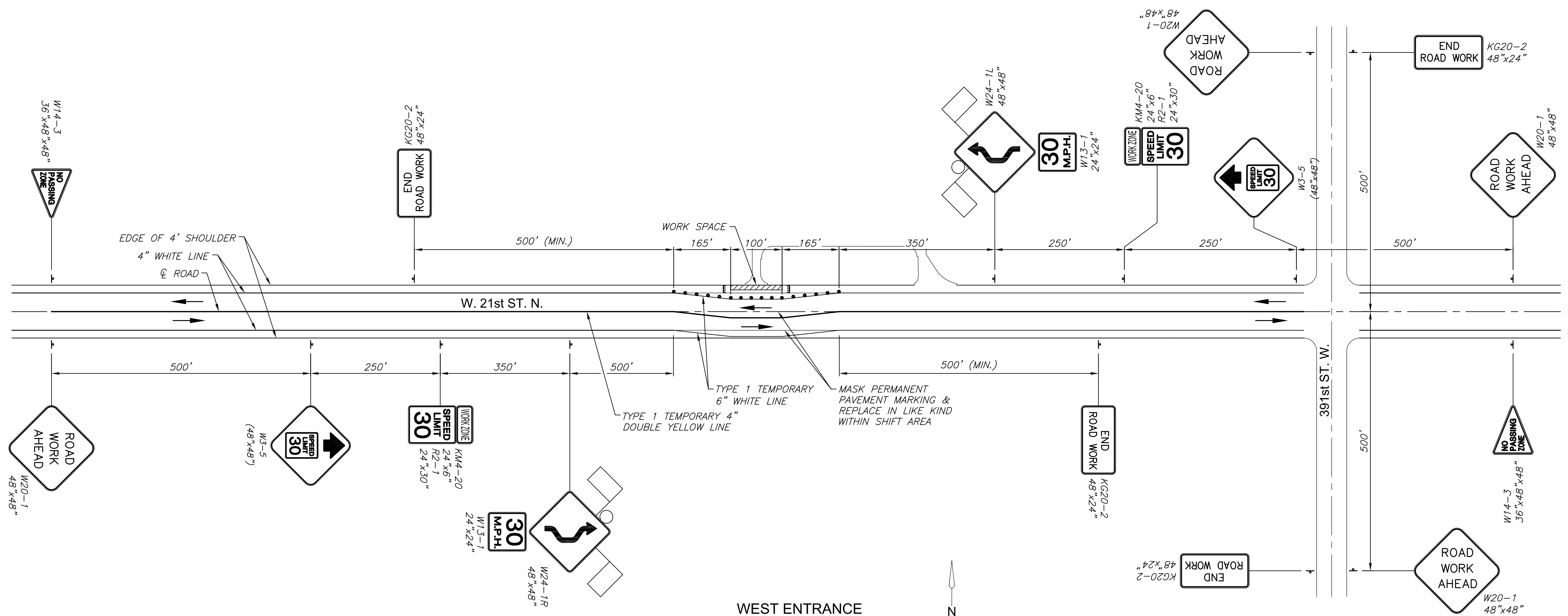


PLOTTED: Tuesday, November 06, 2018 @ 08:17PM

J:\PROJECTS\2018\1601010411\_COW\_ONCALLSERVICES\_160411 CAD CHENEY PUMP STATIONS\160411 TRAF CONT.DWG



**WEST ENTRANCE**

NOTE: SHIFT WIDTH = 3'

**LEGEND**

- Channelizer
- ▬ Type 3 Barricades
- ▨ Work Area
- ← Traffic Flow
- Type "A" Low Intensity Warning Light

PAVING & INCIDENTAL DRAINAGE FOR  
**CHENEY PUMP STATION**  
PAVEMENT REPLACEMENT & REPAIR

©2018 MKEC Engineering All Rights Reserved  
www.mkec.com  
These drawings and their contents, including, but not limited to, all concepts, designs, & ideas are the exclusive property of MKEC Engineering (MKEC), and may not be used or reproduced in any way without the express consent of MKEC.

**TRAFFIC CONTROL PLAN (WEST)**

|             |           |         |
|-------------|-----------|---------|
| PROJECT NO. | 448-90934 |         |
| DATE        | NOV. 2018 |         |
| SCALE       | NTS       |         |
| DESIGNED    | DRAWN     | CHECKED |
| SLF         | BKS       | SLF     |
| NO.         | REVISION  | DATE    |