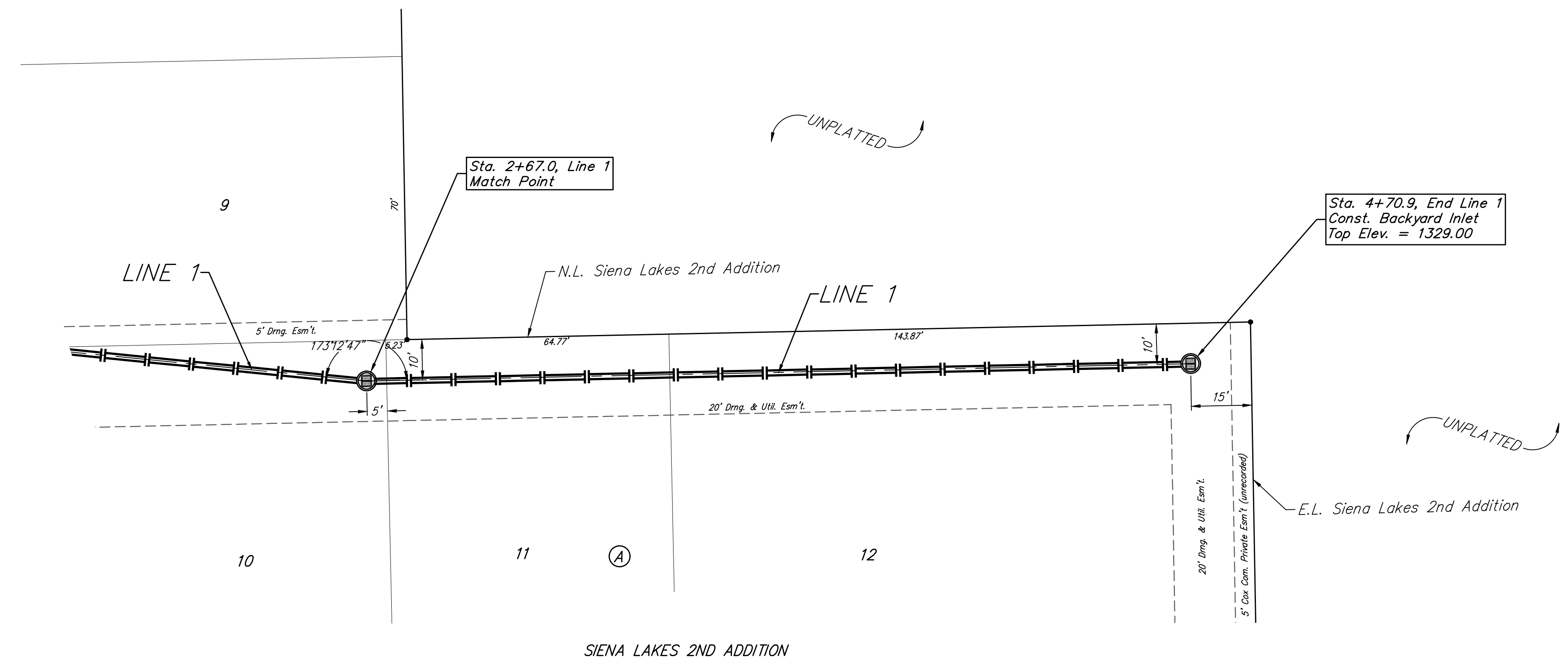
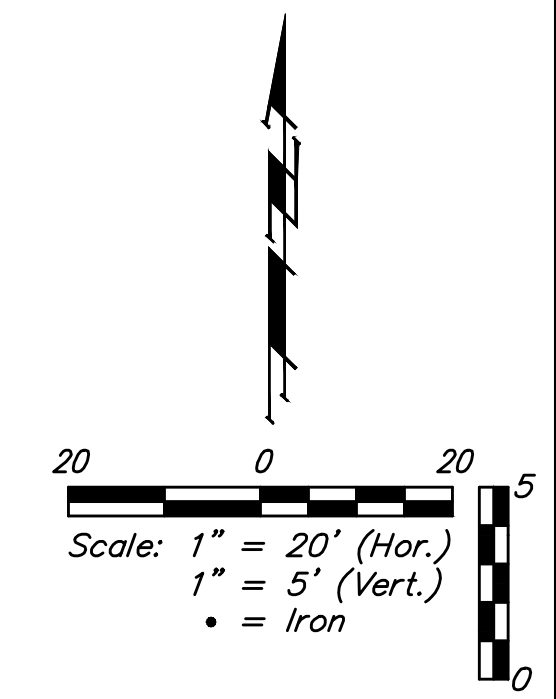
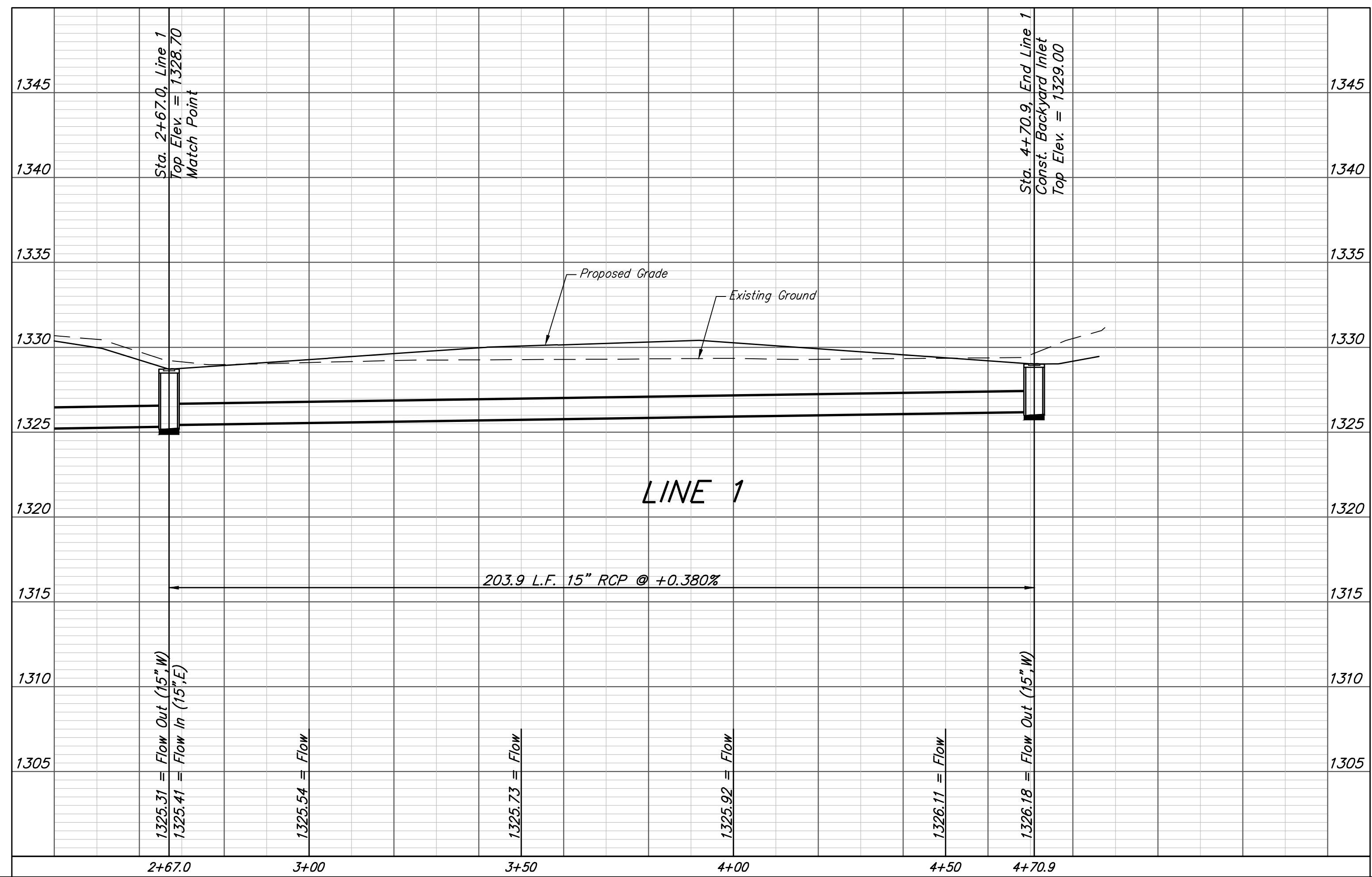


BENCHMARKS:
 Chiseled square at the end of the top of curb at the southeast corner of Ridge Port and 37th ST N.
 Elev. = 1333.05 NAVD88

Chiseled square on the south side of curb inlet on the east side of Lakeway ST
 Elev. = 1329.58 NAVD88



SIENA LAKES 2ND ADDITION



		Siena Lakes 2nd Addition - Phase I	
		LINE 1	
Storm Water Sewer Improvements		<small>Baughman Company, P.A. 315 Ellis St. Wichita, KS 67211 P 316-262-7271 F 316-262-0149 ENGINEERING SURVEYING PLANNING LANDSCAPE ARCHITECTURE</small>	
PROJECT NUMBER 472-85177	DESIGN AEG	DRAWN JAK	APPROVED DATE 11/06/18
REVISIONS:	SCALE Noted		SHEET 13 OF 31