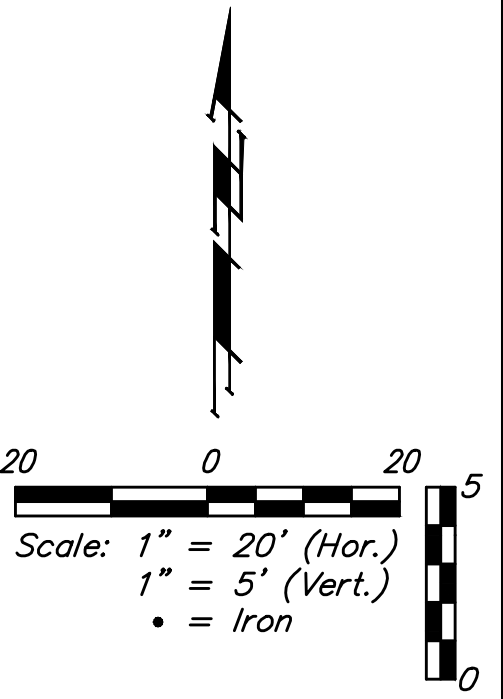
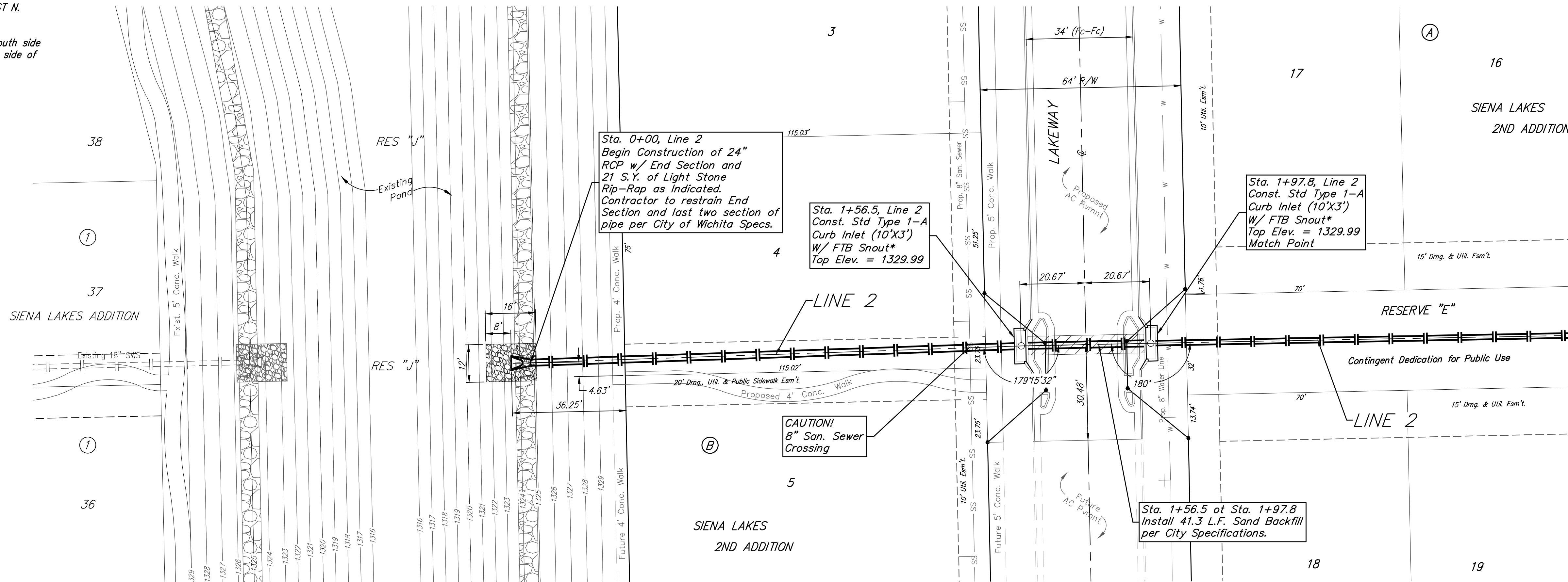
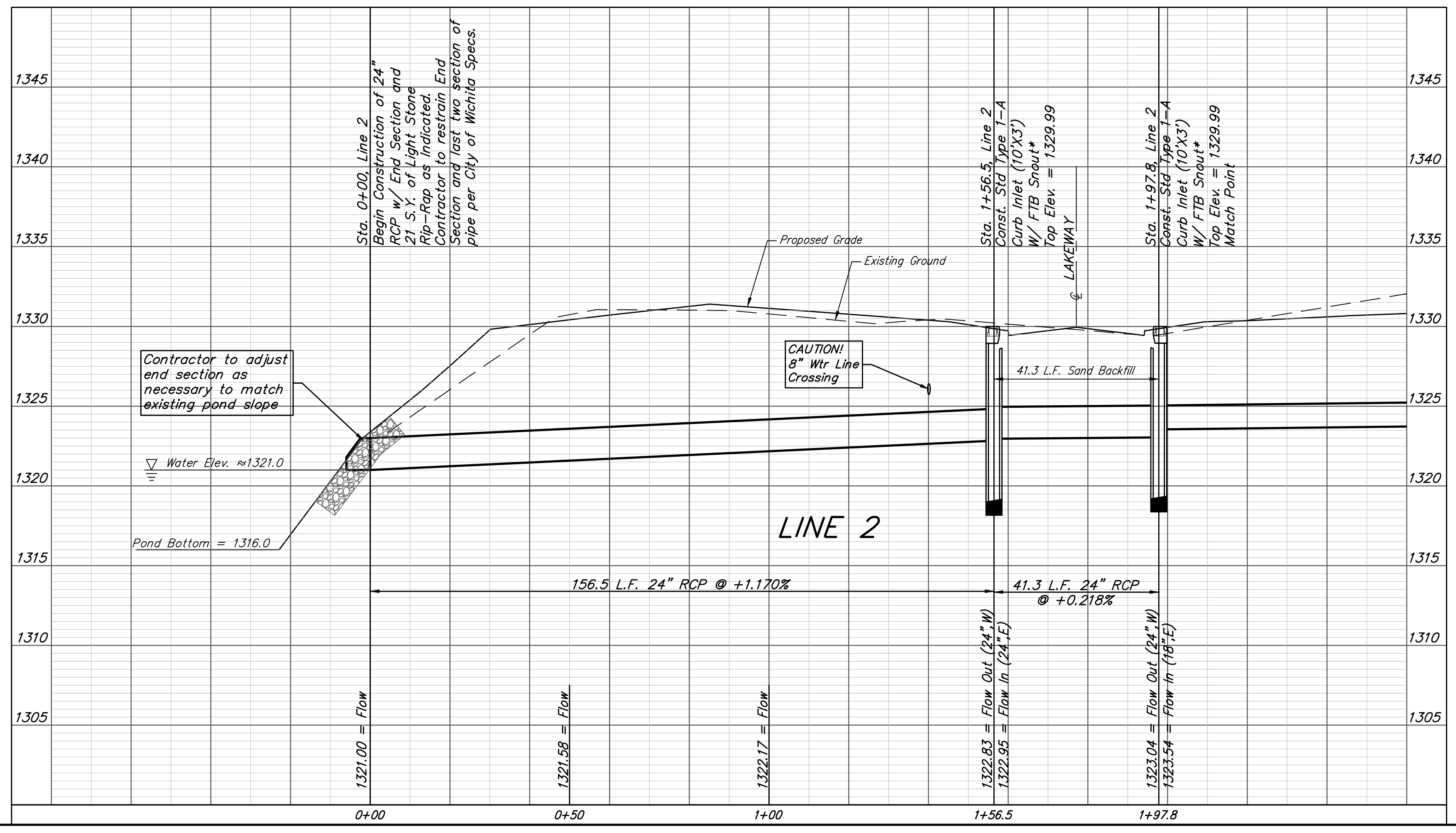


BENCHMARKS:
 Chiseled square at the end of the top of curb at the southeast corner of Ridge Port and 37th ST N.
 Elev. = 1333.05 NAVD88

Chiseled square on the south side of curb inlet on the east side of Lakeway ST
 Elev. = 1329.58 NAVD88



*Cost of snout to be considered incidental to price bid for Inlet.



		Siena Lakes 2nd Addition - Phase I	
		LINE 2	
Storm Water Sewer Improvements		Baughman Company, P.A. 315 Ellis St. Wichita, KS 67211 P 316-262-7271 F 316-262-0149 ENGINEERING SURVEYING PLANNING LANDSCAPE ARCHITECTURE	
PROJECT NUMBER 472-85177	DESIGN AEG	DRAWN JAK	APPROVED DATE 11/06/18
REVISIONS:	SCALE Noted	SHEET 14 OF 31	