

AS BUILT PLANS
 Contractor: Duling Construction Co.
 Inspector: David VanSickle, Baughman Co.
 As Built by: KEK, 10/10/18

Lateral 17, Main 6, Cowskin Interceptor Sewer Sanitary Sewer Improvements

to serve **TURKEY CREEK 3RD ADDITION - PHASE 3B**

CITY OF WICHITA, KANSAS

Gary Janzen, P.E. City Engineer

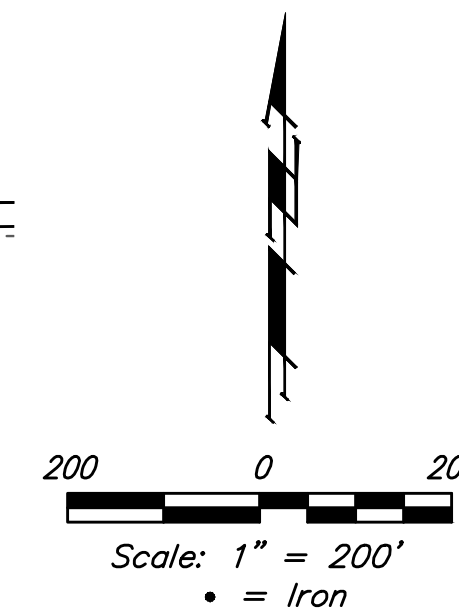
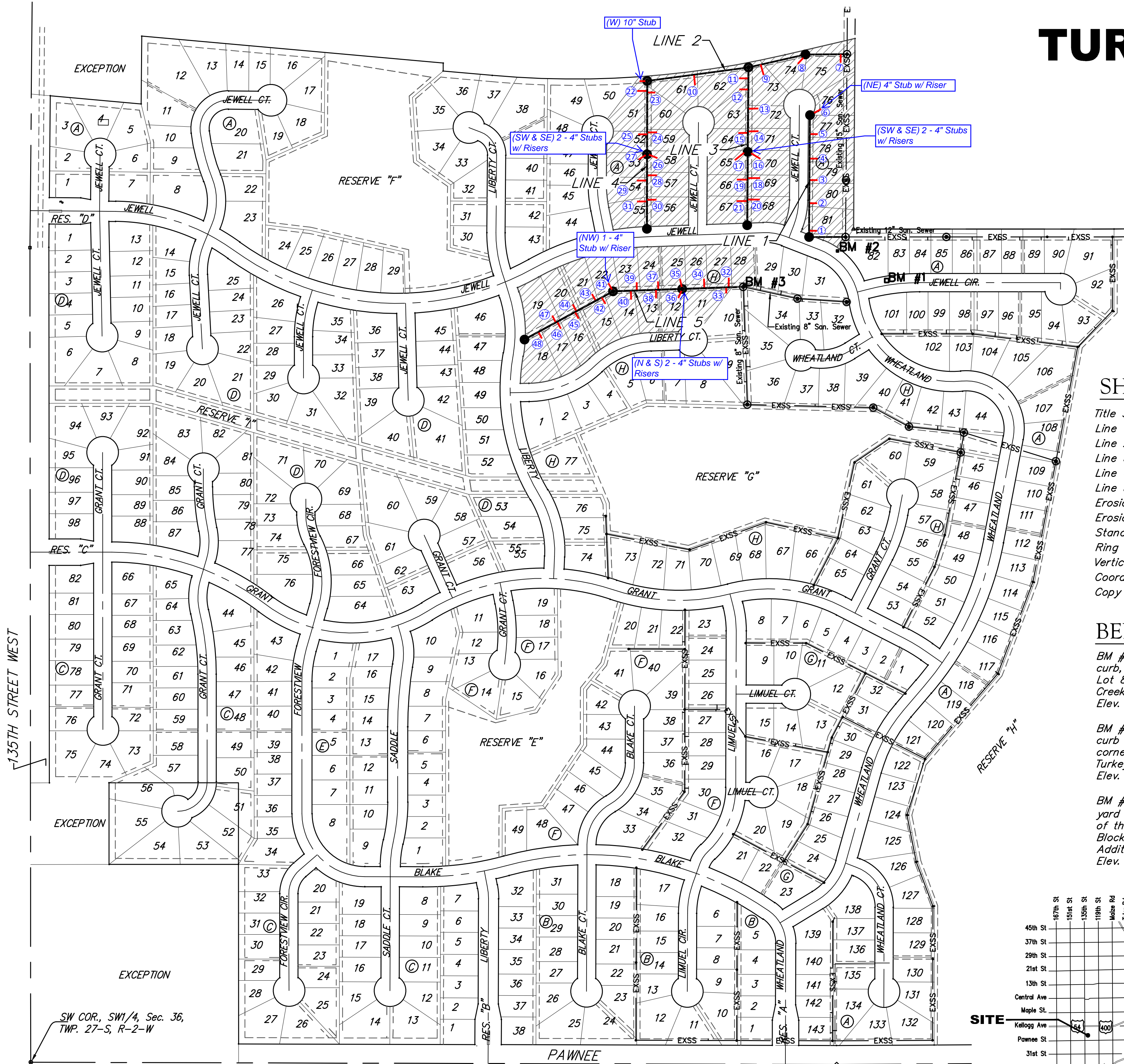
Project Number

468-85050

OCA Number

744467

Duling Construction - Contractor
 J. Wagner - City of Wichita, Field Project Engineer
 D. VanSickle - Baughman, Inspector
 As-built
 Stubs & Risers
 Final Acceptance Date: 10/10/2018
 pdf: 12/14/2018 apr



SHEET INDEX

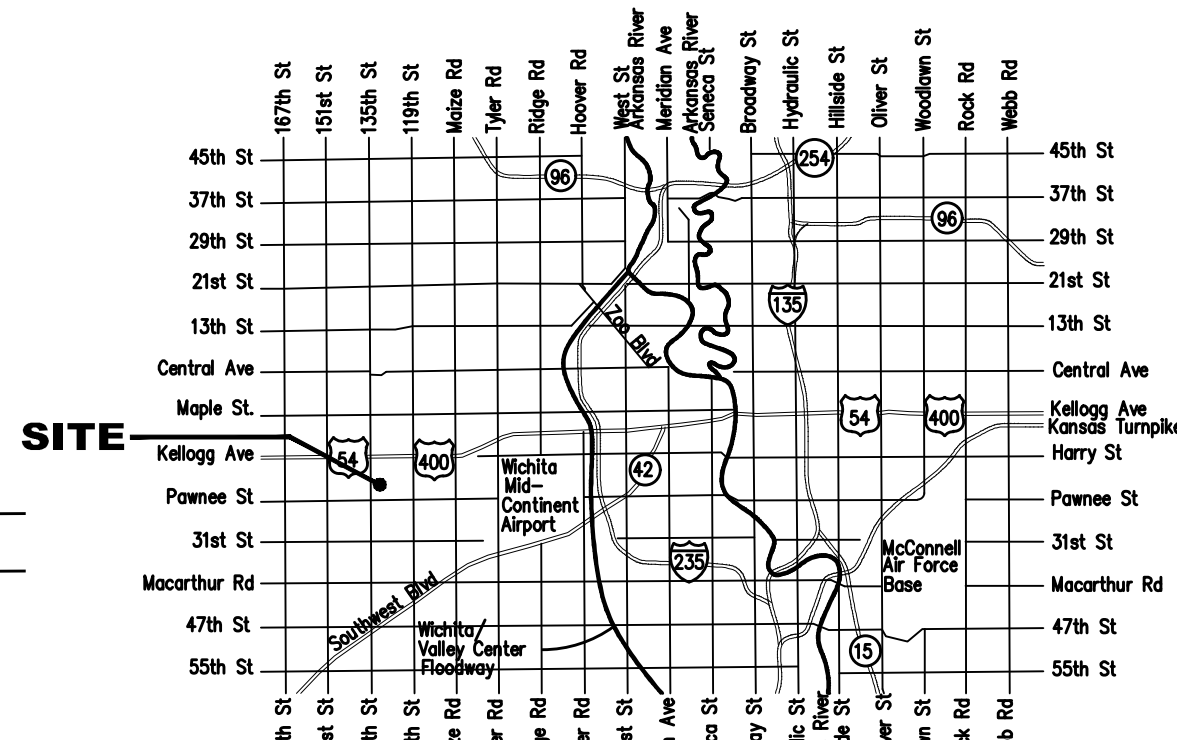
Title Sheet	1
Line 1	2
Line 2	3
Line 3	4
Line 4	5
Line 5	6
Erosion Control Plan	7
Erosion Control BMP Details	8-12
Standard Manhole Detail	13
Ring & Cover Detail	14
Vertical Riser Detail	15
Coordinate Sheet	16-17
Copy of Plat	18

BENCHMARKS

BM #1: "□" Cut in top of curb, south of SE corner of Lot 82, Block A, Turkey Creek 3rd Addition. Elev. = 1335.49 NGVD29

BM #2: "□" Cut on top of curb inlet, SW of the SE corner of Lot 81, Block A, Turkey Creek 3rd Addition. Elev. = 1335.95 NGVD29

BM #3: "□" Cut on top of yard inlet, 5' N & 43.5' E of the SE corner of Lot 28, Block H, Turkey Creek 3rd Addition. Elev. = 1335.95 NGVD29



GENERAL NOTES:

- Contractor will be required to provide notice to utility companies a minimum of forty-eight (48) hours prior to any excavation, as follows:

Kansas One-Call	687-2470
-----------------	----------

The Contractor must notify the following in case of an emergency:

Cox Communications	262-4270
Kansas Gas Service	1-888-482-4950
Westar Energy	383-8650
Aquila Energy	1-800-303-0357
AT&T	268-2245
City of Wichita Water Dept.	268-4563
City of Wichita Sewer Maint.	268-4024
City of Wichita Storm Sewer Maint.	268-4090
City of Wichita Traffic Maint.	268-4034
Conoco Phillips Pipeline Co.	1-877-267-2290
Southern Star Pipeline Co.	529-6600
Kinder-Morgan Pipeline Co.	1-888-844-5658
- Utility service lines, poles, valve boxes, meters, and etcetera are to be adjusted as necessary by others prior to construction unless the plans specifically call for their adjustment by the Contractor or unless the plans specifically identify a utility to be adjusted by its owner during construction. Existing utilities and their location, as shown on the plans, represent the best information obtainable for design. The Contractor will be required to work around existing utilities within the right-of-way which do not conflict with proposed construction.
- Rubble from the removal of miscellaneous structures and excess excavation which is to be wasted shall be disposed of on sites to be provided by the Contractor. These sites shall be approved by the Engineer as to suitability, appearance and site location. Locations, in the opinion of the Engineer, that leave an unsightly appearance will not be approved. All disposal sites must be approved by the Kansas Department of Health and Environment. Material either stockpiled or disposed of in a flood plain would require a Kansas State Board of Agriculture permit. Any material dumped in waters of the United States or wetlands is subject to U.S. Corps. of Engineers permitting regulations. Any material buried or stockpiled beyond approved construction limits would require additional archaeological investigations unless buried in a previously approved borrow location.
- Trees and shrubs in public right-of-way which are in direct conflict with proposed new construction shall be removed by the Contractor with the Engineer's approval. Trees and shrubs which are not in direct conflict with proposed new construction shall be saved and protected from damage.
- The Contractor shall give all property owners and/or tenants of developed property abutting the construction of this project a minimum of ten (10) days notice prior to start of construction.
- The Contractor shall be responsible for preserving property irons. The Contractor will be required to re-establish any property irons which are damaged or destroyed by his construction operations. Such irons shall be re-established by a licensed land surveyor in accordance with state laws.
- All existing and proposed erosion control measures including silt fencing, erosion control mat, straw bales, inlet barriers, and const. entrance shall be maintained throughout construction by the contractor and until project is accepted by the City of Wichita. The on-site engineer shall complete weekly reports on the status of erosion control measures. The contractor shall be required to comply with maintenance and/or replacement of erosion control measures as determined by the on-site engineer until project is accepted by City of Wichita. Maintenance and/or replacement of erosion control measures to be paid by L.S. bid item "Maintain Existing BMP's."
- All excess excavation shall remain on-site and shall be stockpiled or spread at a location determined by the engineer.
- The Contractor shall be responsible for maintaining continuous flow of sewage through construction. Contractor's proposed method for maintaining sewage flow shall be approved by the Engineer. Cost of maintaining flow of sewage through construction will not be paid for directly and this cost shall be considered as subsidiary to the other pay items of work.
- All areas disturbed during construction shall be as follows (Temporary Seeding):

Seed: Rye grass (PLS)--8 lbs./1000 Sq. Ft.

All costs associated with seeding shall be included in bid item "Seeding". All seeding operations shall conform to City of Wichita Standard Specifications.
- The Developer for this project is Paul Kelsey
 716 N. 119th St. #112, Wichita, KS 67212
 PH# (316)722-1077 email paul.kelsey@gmail.com

BENEFIT DISTRICT

Vicinity Map



Baughman Company, P.A. 315 Ellis St. Wichita, KS 67211 P 316-262-7271 F 316-262-0149
 ENGINEERING | SURVEYING | PLANNING | LANDSCAPE ARCHITECTURE

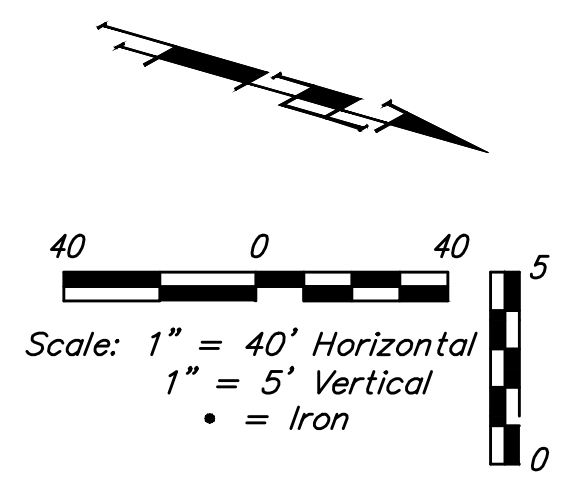
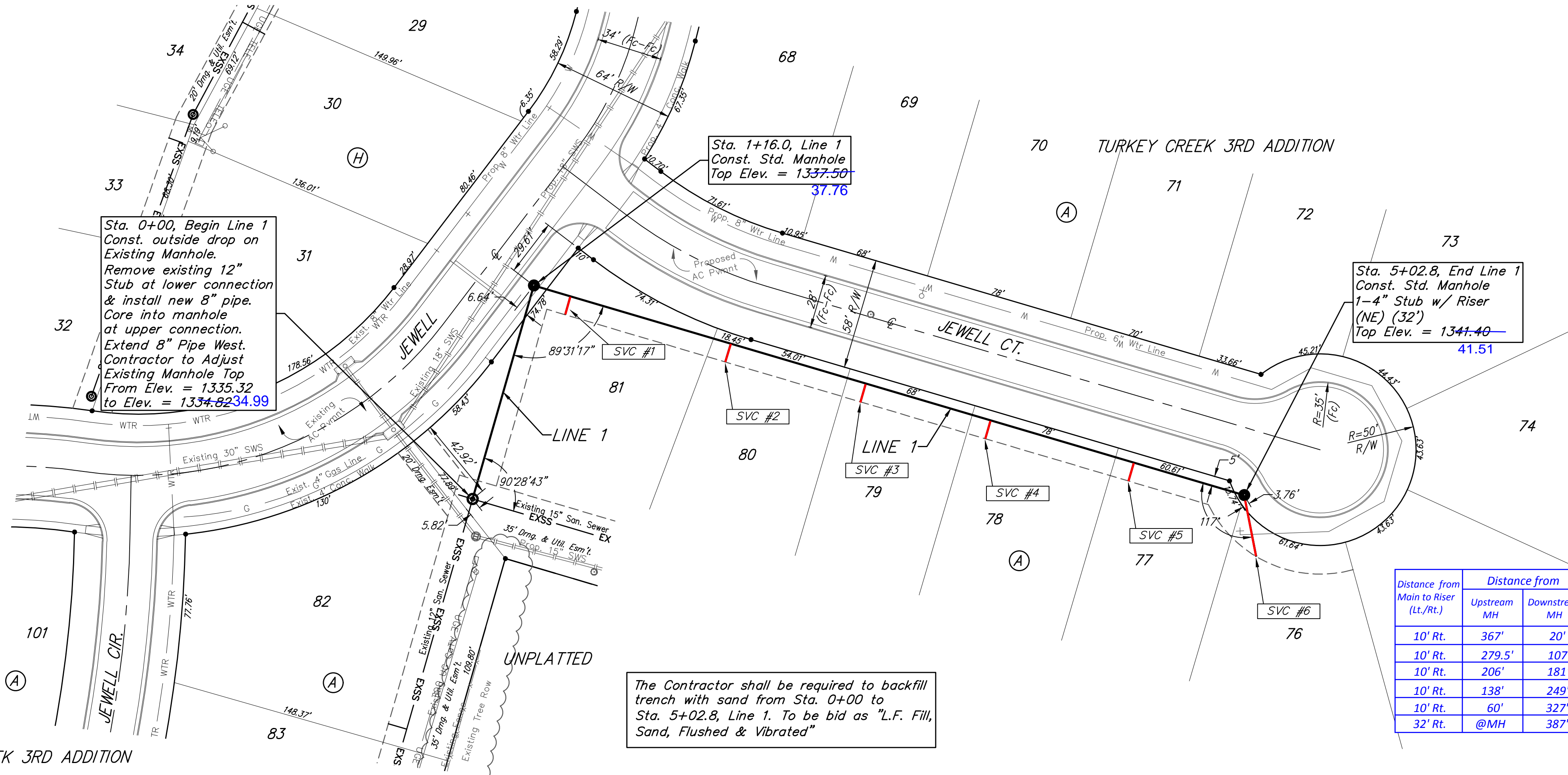


BENCHMARKS:

BM #1: "□" Cut in top of curb, south of SE corner of Lot 82, Block A, Turkey Creek 3rd Addition. Elev. = 1335.49 NGVD29

BM #2: "□" Cut on top of curb inlet, SW of the SE corner of Lot 81, Block A, Turkey Creek 3rd Addition. Elev. = 1335.95 NGVD29

BM #3: "□" Cut on top of yard inlet, 5' N & 43.5' E of the SE corner of Lot 28, Block H, Turkey Creek 3rd Addition. Elev. = 1335.95 NGVD29

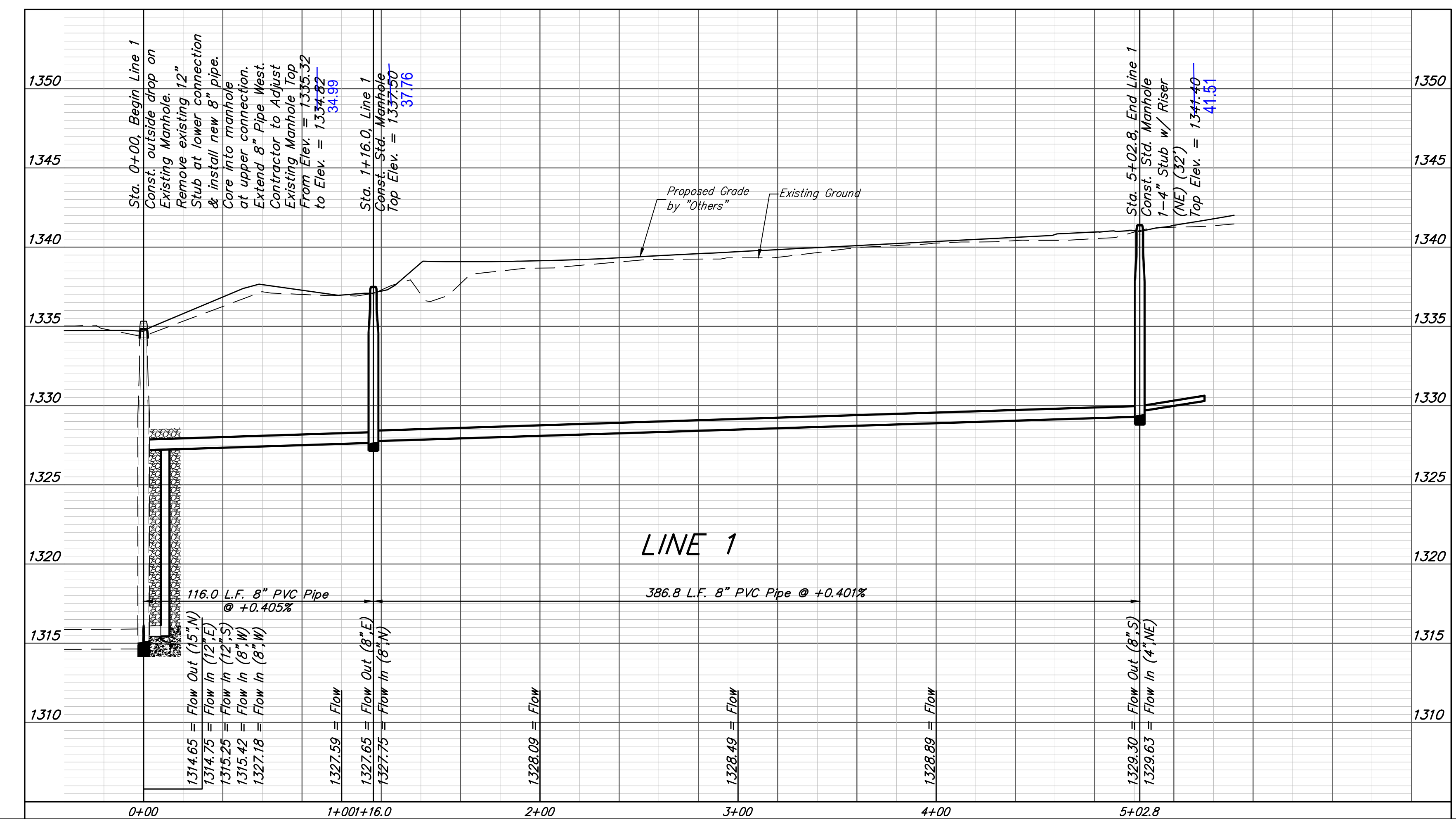


The Contractor shall be required to backfill trench with sand from Sta. 0+00 to Sta. 5+02.8, Line 1. To be bid as "L.F. Fill, Sand, Flushed & Vibrated"

SEWER SERVICE TABLE

Distance from Main to Riser (Lt./Rt.)	Distance from		NUMBER	TYPE	LOCATION				FOR INFORMATION ONLY	
	Upstream MH	Downstream MH			LOT NO.	BLOCK NO.	LINE NO.	STATION/DIRECTION	APPROXIMATE LENGTH 4" PIPE	VERTICAL
10' Rt.	367'	20'	1	8" X 4" Tee	81	A	1	1+36.1/Rt.	5.6'	10'
10' Rt.	279.5'	107'	2	8" X 4" Tee	80	A	1	2+23.3/Rt.	6.1'	10'
10' Rt.	206'	181'	3	8" X 4" Tee	79	A	1	2+96.8/Rt.	6.2'	10'
10' Rt.	138'	249'	4	8" X 4" Tee	78	A	1	3+64.8/Rt.	6.4'	10'
10' Rt.	60'	327'	5	8" X 4" Tee	77	A	1	4+42.8/Rt.	6.6'	10'
32' Rt.	@MH	387'	6	4" Stub	76	A	1	5+02.8/Rt.	6.4'	32'

NOTE: Vertical Riser Pipe shall be extended to 2' minimum above ground water elevation and 4' maximum below proposed ground elevation.



Baughman Turf Cr 3rd Addition - Phase 3B
LINE 1
 Sanitary Sewer Installation Plans

Baughman Company, P.A. 315 Ellis St. Wichita, KS 67211 P 316-262-7271 F 316-262-0149
 ENGINEERING | SURVEYING | PLANNING | LANDSCAPE ARCHITECTURE

PROJECT NUMBER: 461-25050
 DESIGN: NBW
 DRAWN: IAK
 APPROVED: [Signature]
 DATE: 4/19/11
 SCALE: Noted
 SHEET: 2 OF 18

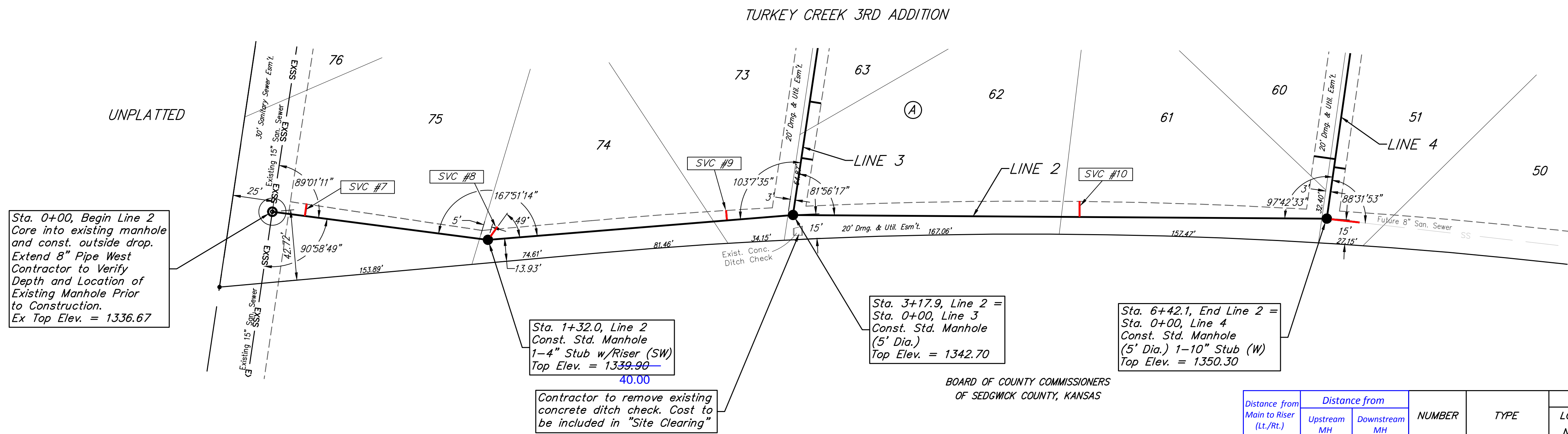
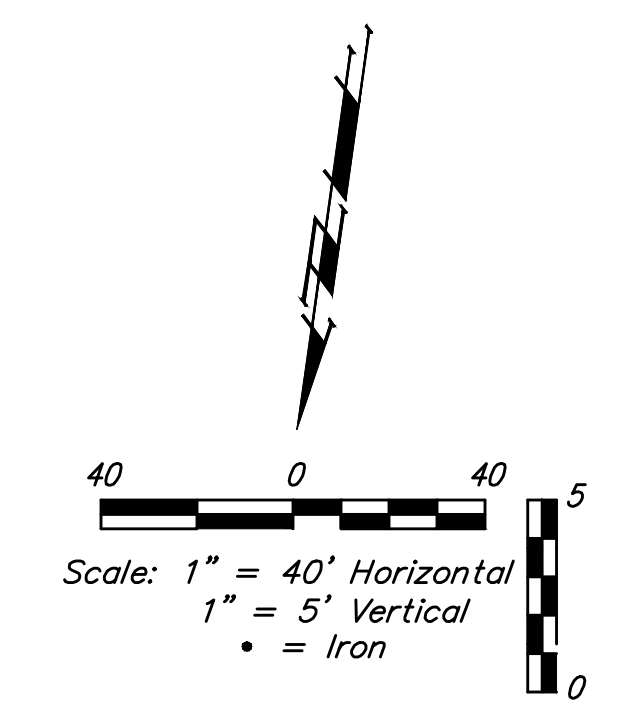
C:\Projects\Turkey Creek 3rd\Engineering\Phase 3B\SS 18-02-E9312\SS PLANS.dwg

BENCHMARKS:

BM #1: "□" Cut in top of curb, south of SE corner of Lot 82, Block A, Turkey Creek 3rd Addition.
Elev. = 1335.49 NGVD29

BM #2: "□" Cut on top of curb inlet, SW of the SE corner of Lot 81, Block A, Turkey Creek 3rd Addition.
Elev. = 1335.95 NGVD29

BM #3: "□" Cut on top of yard inlet, 5' N & 43.5' E of the SE corner of Lot 28, Block H, Turkey Creek 3rd Addition.
Elev. = 1335.95 NGVD29



Sta. 0+00, Begin Line 2
Core into existing manhole and const. outside drop. Extend 8" Pipe West Contractor to Verify Depth and Location of Existing Manhole Prior to Construction.
Ex Top Elev. = 1336.67

Sta. 1+32.0, Line 2
Const. Std. Manhole 1-4" Stub w/Riser (SW)
Top Elev. = 1339.90
40.00

Sta. 3+17.9, Line 2 =
Sta. 0+00, Line 3
Const. Std. Manhole (5" Dia.)
Top Elev. = 1342.70

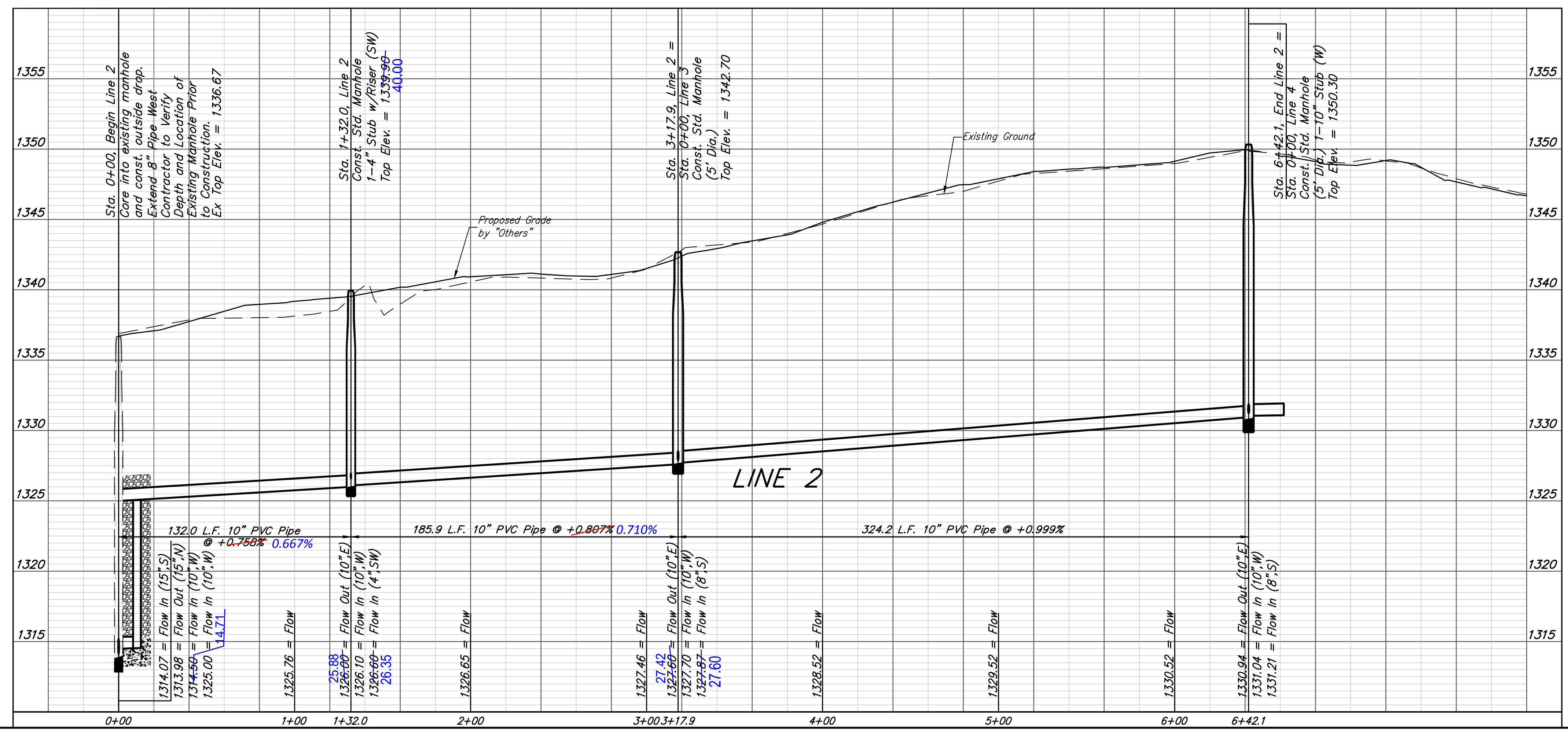
Sta. 6+42.1, End Line 2 =
Sta. 0+00, Line 4
Const. Std. Manhole (5" Dia.) 1-10" Stub (W)
Top Elev. = 1350.30

BOARD OF COUNTY COMMISSIONERS
OF SEDGWICK COUNTY, KANSAS

SEWER SERVICE TABLE

Distance from Main to Riser (Lt./Rt.)	Distance from		NUMBER	TYPE	LOCATION				FOR INFORMATION ONLY	
	Upstream MH	Downstream MH			LOT NO.	BLOCK NO.	LINE NO.	STATION/DIRECTION	APPROXIMATE LENGTH 4" PIPE	
8' Lt.	112'	20'	7	10" X 4" Tee	75	A	2	0+20.1/Lt.	6.8'	8'
10' Lt.	@MH	132'	8	4" Stub	74	A	2	1+32.0/Lt.	8.8'	10'
6' Lt.	40'	146'	9	10" X 4" Tee	73	A	2	2+77.7/Lt.	9'	6'
9.5' Lt.	150'	174'	10	10" X 4" Tee	61	A	2	4+92.0/Lt.	13'	9.5'

NOTE: Vertical Riser Pipe shall be extended to 2' minimum above ground water elevation and 4' maximum below proposed ground elevation.



Baughman
ENGINEERING | SURVEYING | PLANNING | LANDSCAPE ARCHITECTURE

Turkey Creek 3rd Addition - Phase 3B
LINE 2
Sanitary Sewer Installation Plans

PROJECT NUMBER: 461-5050
DESIGN: NBW
DRAWN: IAK
APPROVED: [Signature]
DATE: 4/19/11
SCALE: Noted
SHEET

3 OF 18

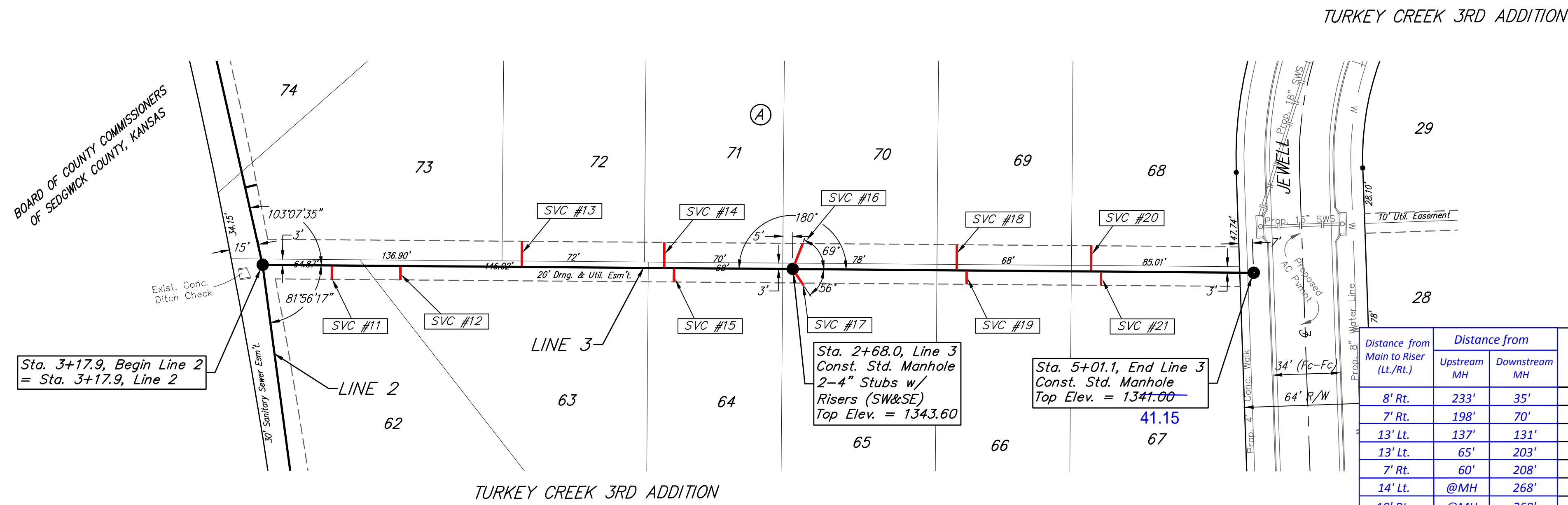
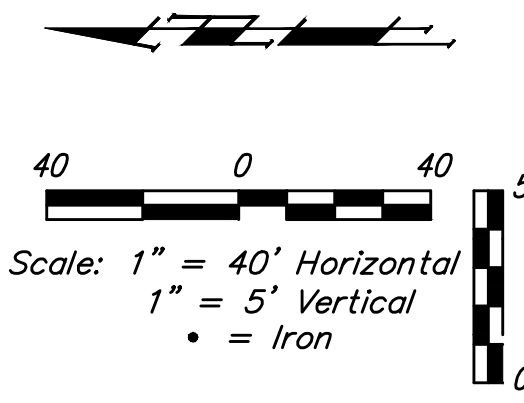
C:\Projects\Turkey Creek 3rd\Engineering\Phase 3B\SS 18-02-E912\SS PLANS.dwg

BENCHMARKS:

BM #1: "□" Cut in top of curb, south of SE corner of Lot B2, Block A, Turkey Creek 3rd Addition.
Elev. = 1335.49 NGVD29

BM #2: "□" Cut on top of curb inlet, SW of the SE corner of Lot B1, Block A, Turkey Creek 3rd Addition.
Elev. = 1335.95 NGVD29

BM #3: "□" Cut on top of yard inlet, 5' N & 43.5' E of the SE corner of Lot 28, Block H, Turkey Creek 3rd Addition.
Elev. = 1335.95 NGVD29



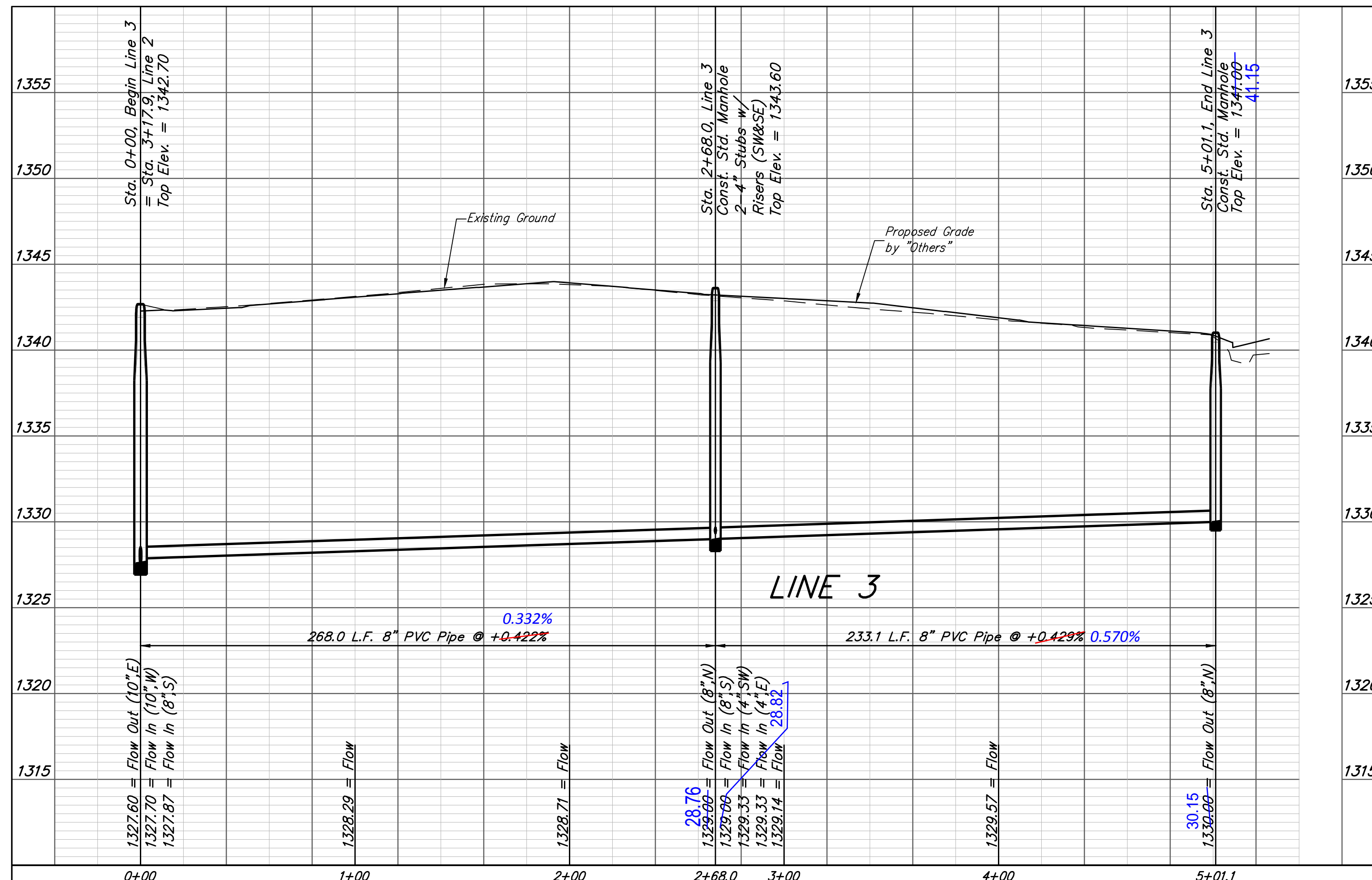
TURKEY CREEK 3RD ADDITION

TURKEY CREEK 3RD ADDITION

SEWER SERVICE TABLE

Distance from Main to Riser (Lt./Rt.)	Distance from		NUMBER	TYPE	LOCATION			FOR INFORMATION ONLY		
	Upstream MH	Downstream MH			LOT NO.	BLOCK NO.	LINE NO.	STATION/DIRECTION	APPROXIMATE LENGTH 4" PIPE	VERTICAL
8' Rt.	233'	35'	11	8" X 4" Tee	62	A	3	0+35.0/Rt.	9.5'	8'
7' Rt.	198'	70'	12	8" X 4" Tee	63	A	3	0+69.7/Rt.	9.7'	7'
13' Lt.	137'	131'	13	8" X 4" Tee	72	A	3	1+31.0/Lt.	9.4'	13'
13' Lt.	65'	203'	14	8" X 4" Tee	71	A	3	2+03.0/Lt.	9.5'	13'
7' Rt.	60'	208'	15	8" X 4" Tee	64	A	3	2+08.0/Rt.	10.1'	7'
14' Lt.	@MH	268'	16	4" Stub	70	A	3	2+68.0/Lt.	9.2'	14'
10' Rt.	@MH	268'	17	4" Stub	65	A	3	2+68.0/Rt.	9.9'	10'
13' Lt.	150'	83'	18	8" X 4" Tee	69	A	3	3+51.0/Lt.	7.6'	13'
7' Rt.	145'	88'	19	8" X 4" Tee	66	A	3	3+56.0/Rt.	8.2'	7'
13' Lt.	82'	151'	20	8" X 4" Tee	68	A	3	4+19.0/Lt.	6.4'	13'
7' Rt.	77'	156'	21	8" X 4" Tee	67	A	3	4+24.0/Rt.	6.9'	7'

NOTE: Vertical Riser Pipe shall be extended to 2' minimum above ground water elevation and 4' maximum below proposed ground elevation.



LINE 3
Sanitary Sewer Installation Plans

Baughman Company, P.A. 315 Ellis St. Wichita, KS 67211 P 316-262-7271 F 316-262-0149
ENGINEERING | SURVEYING | PLANNING | LANDSCAPE ARCHITECTURE

PROJECT NUMBER 461-2050	DESIGN NBW
REVISIONS:	DRAWN IAK
	APPROVED DATE # 19/ 11
	SCALE N/A
	SHEET 4 OF 18

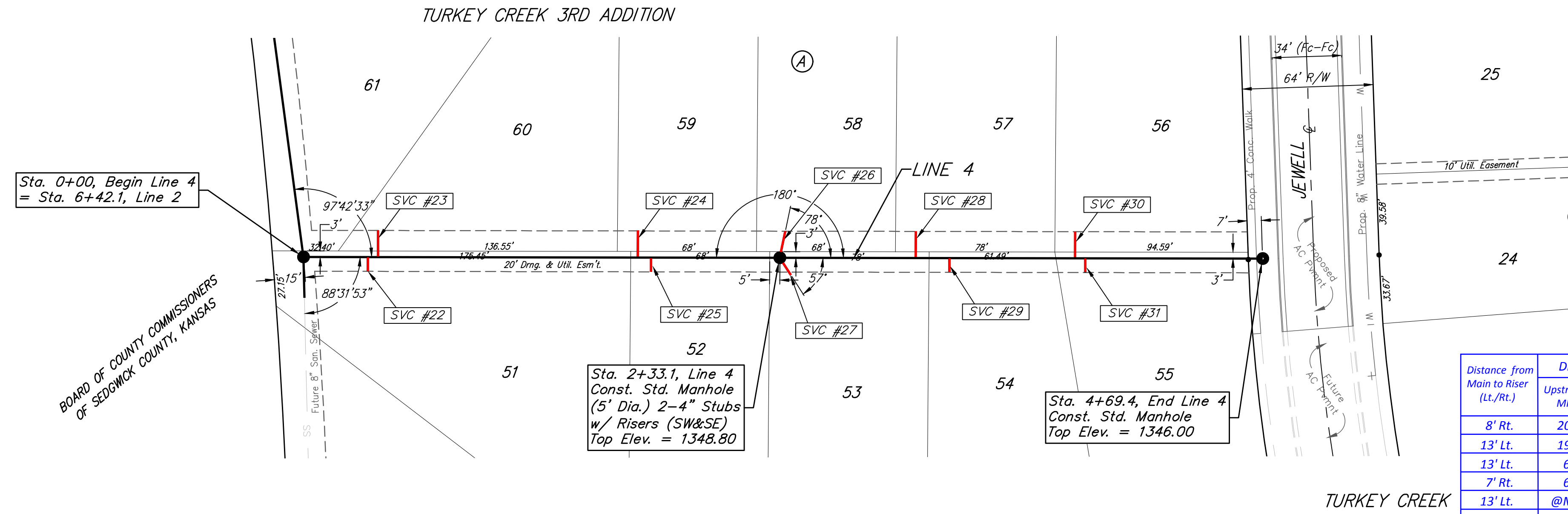
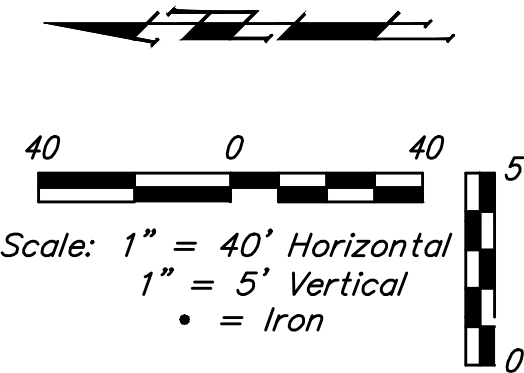
C:\Projects\Turkey Creek 3rd\Engineering\Phase 3B\SS 18-02-E912\SS PLANS.dwg

BENCHMARKS:

BM #1: "□" Cut in top of curb, south of SE corner of Lot 82, Block A, Turkey Creek 3rd Addition.
Elev. = 1335.49 NGVD29

BM #2: "□" Cut on top of curb inlet, SW of the SE corner of Lot 81, Block A, Turkey Creek 3rd Addition.
Elev. = 1335.95 NGVD29

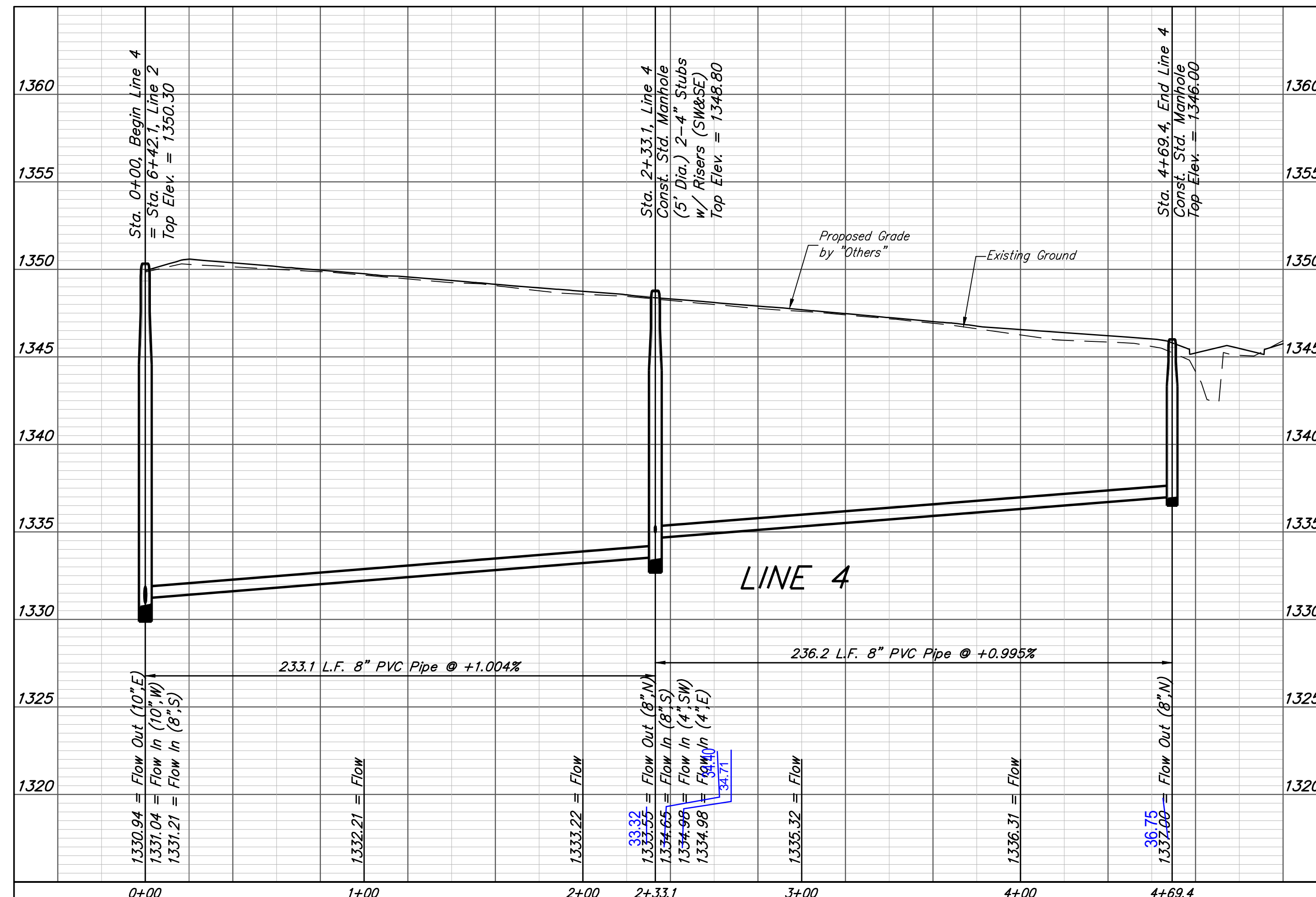
BM #3: "□" Cut on top of yard inlet, 5' N & 43.5' E of the SE corner of Lot 28, Block H, Turkey Creek 3rd Addition.
Elev. = 1335.95 NGVD29



SEWER SERVICE TABLE

Distance from Main to Riser (Lt./Rt.)	Distance from		NUMBER	TYPE	LOCATION			FOR INFORMATION ONLY		
	Upstream MH	Downstream MH			LOT NO.	BLOCK NO.	LINE NO.	STATION/DIRECTION	APPROXIMATE LENGTH 4" PIPE	VERTICAL
8' Rt.	202'	31.5'	22	8" X 4" Tee	51	A	4	0+31.5/Rt.	13.8'	8'
13' Lt.	197'	36.5'	23	8" X 4" Tee	60	A	4	0+36.5/Lt.	13.4'	13'
13' Lt.	69'	164'	24	8" X 4" Tee	59	A	4	1+63.7/Lt.	10.8'	13'
7' Rt.	63'	170'	25	8" X 4" Tee	52	A	4	1+70.1/Rt.	11.1'	7'
13' Lt.	@MH	233'	26	4" Stub	58	A	4	2+33.1/Lt.	8.9'	13'
10' Rt.	@MH	233'	27	4" Stub	53	A	4	2+33.1/Rt.	9.1'	10'
13' Lt.	170'	66.5'	28	8" X 4" Tee	57	A	4	2+99.6/Lt.	7'	13'
7' Rt.	153'	83'	29	8" X 4" Tee	54	A	4	3+16.1/Rt.	7'	7'
13' Lt.	92'	144.5'	30	8" X 4" Tee	56	A	4	3+77.6/Lt.	5.4'	13'
7' Rt.	82'	154.5'	31	8" X 4" Tee	55	A	4	3+87.6/Rt.	5.6'	7'

NOTE: Vertical Riser Pipe shall be extended to 2' minimum above ground water elevation and 4' maximum below proposed ground elevation.



Baughman Engineering, P.A. 315 Ellis St. Wichita, KS 67211 P 316-262-7271 F 316-262-0149
ENGINEERING | SURVEYING | PLANNING | LANDSCAPE ARCHITECTURE

Turkey Creek 3rd Addition - Phase 3B
LINE 4
Sanitary Sewer Installation Plans

PROJECT NUMBER: 460-25050
DESIGN: NBW
DRAWN: JAK
APPROVED: [Signature]
DATE: 4/19/11
SCALE: Noted
SHEET: 5 OF 18

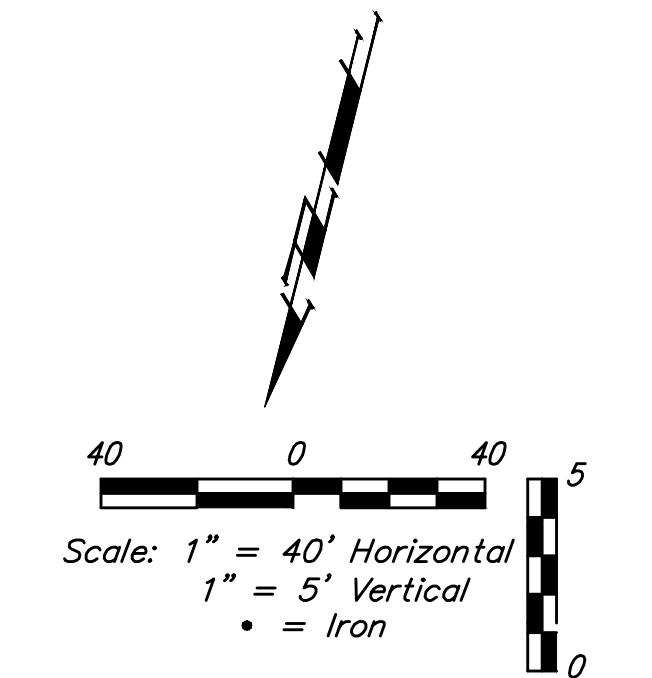
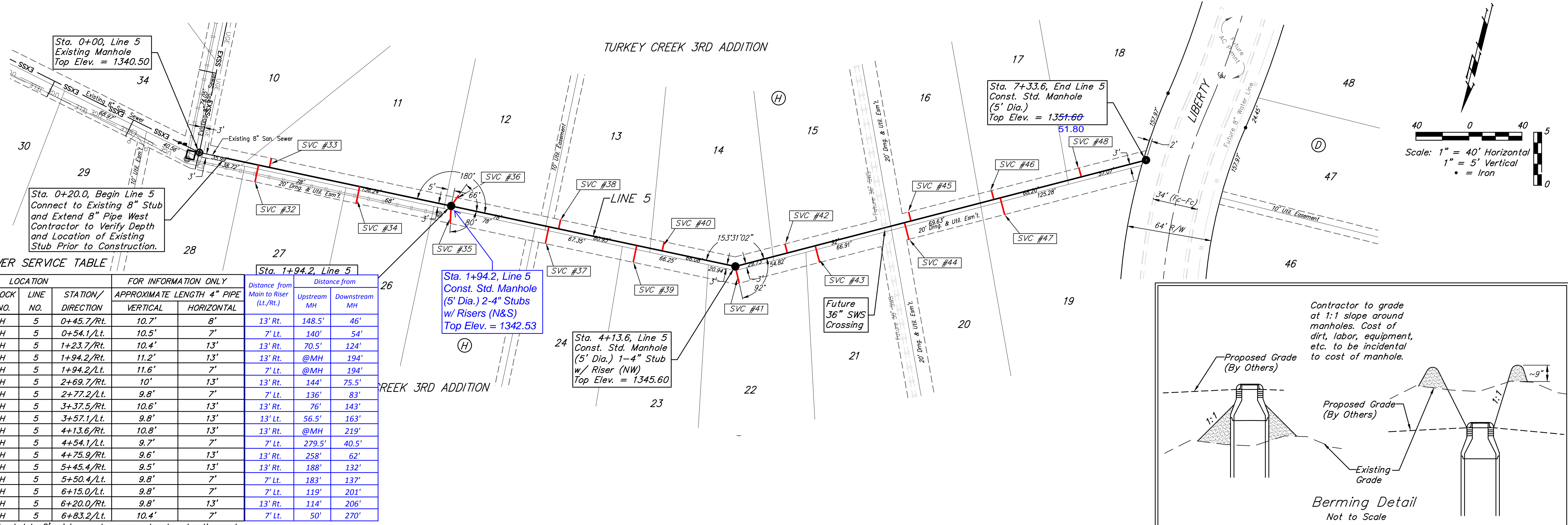
REVISIONS:

BENCHMARKS:

BM #1: "□" Cut in top of curb, south of SE corner of Lot 82, Block A, Turkey Creek 3rd Addition.
Elev. = 1335.49 NGVD29

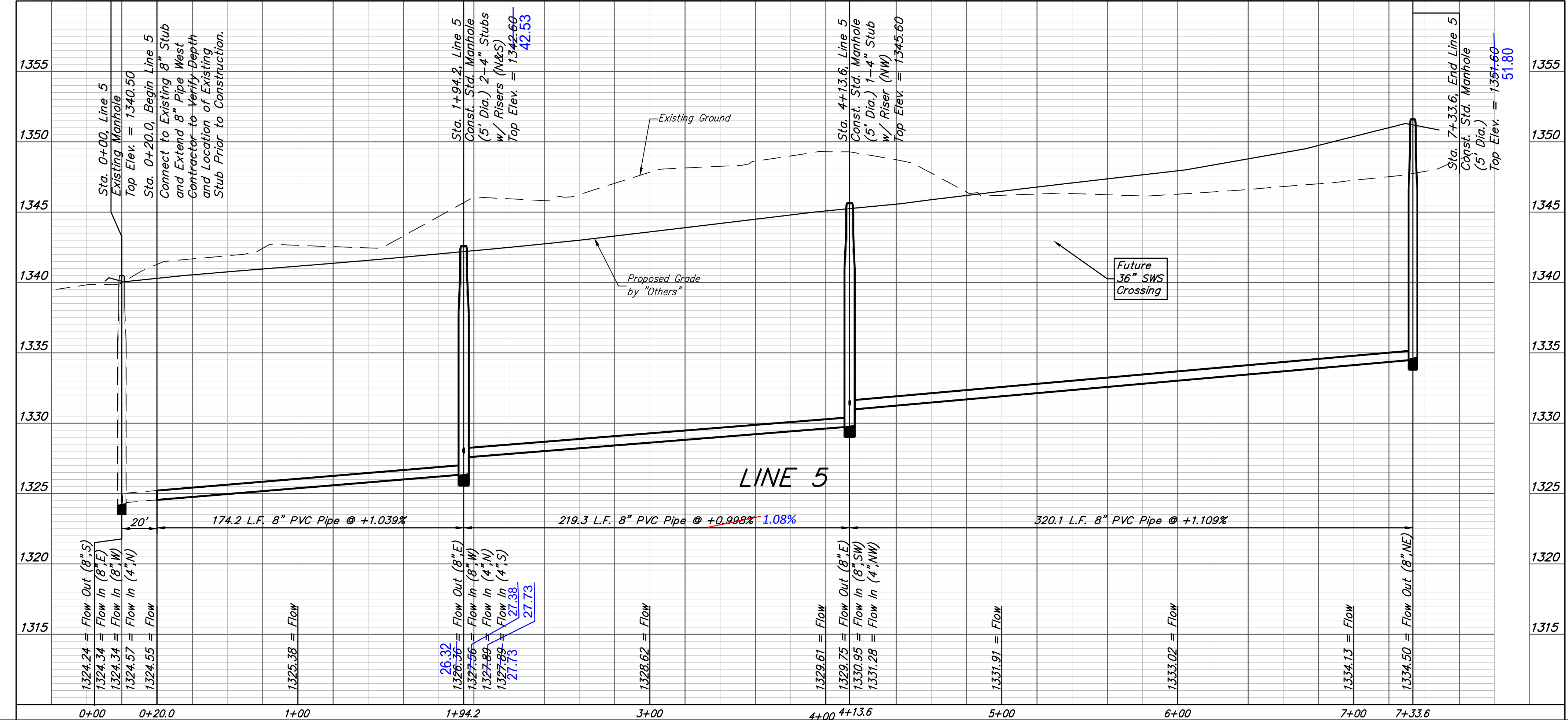
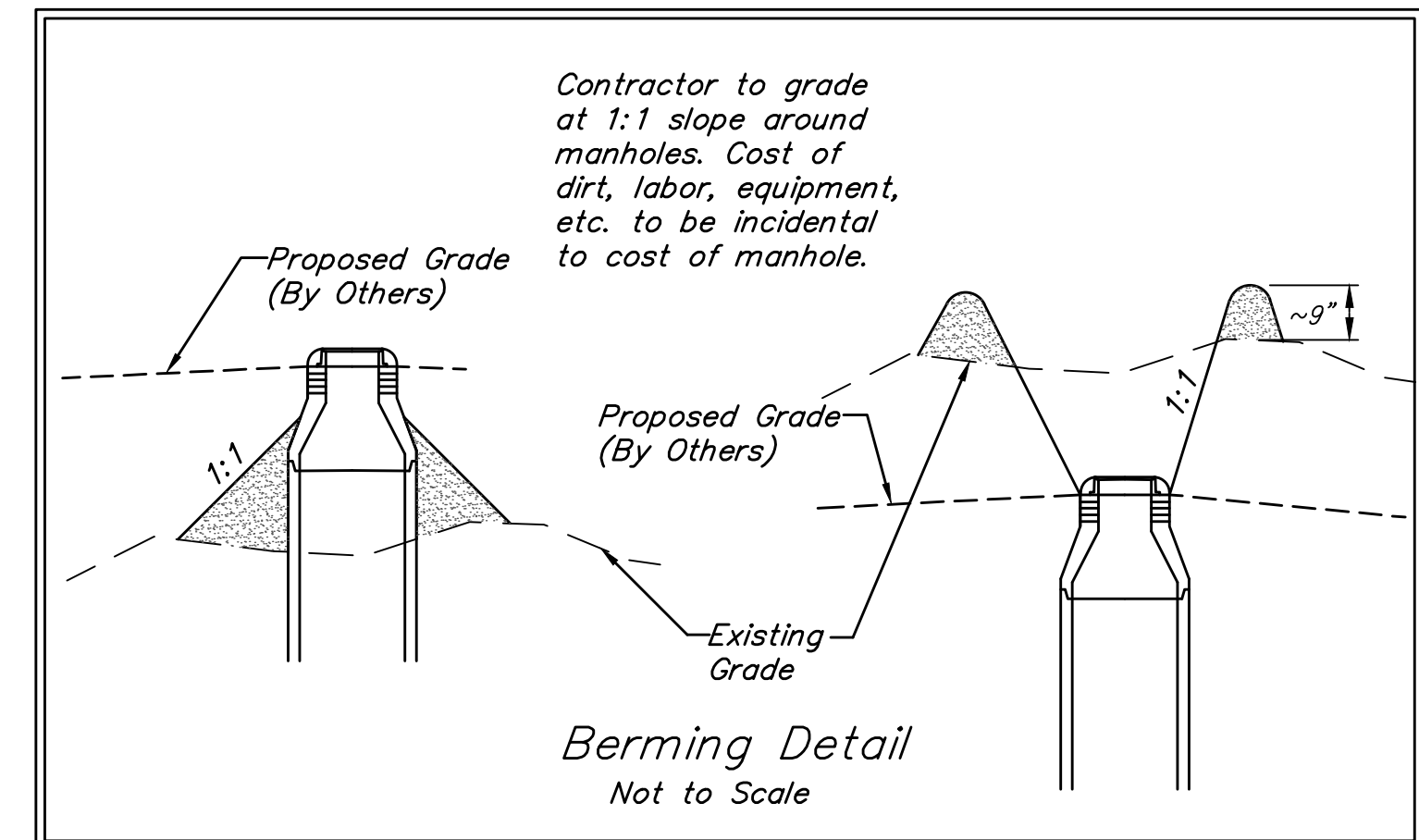
BM #2: "□" Cut on top of curb inlet, SW of the SE corner of Lot 81, Block A, Turkey Creek 3rd Addition.
Elev. = 1335.95 NGVD29

BM #3: "□" Cut on top of yard inlet, 5' N & 43.5' E of the SE corner of Lot 28, Block H, Turkey Creek 3rd Addition.
Elev. = 1335.95 NGVD29



NUMBER	TYPE	LOCATION			FOR INFORMATION ONLY		Distance from			
		LOT NO.	BLOCK NO.	LINE NO.	STATION/ DIRECTION	APPROXIMATE LENGTH 4" PIPE	VERTICAL	HORIZONTAL	Main to Riser (Lt./Rt.)	Upstream MH
32	8" X 4" Tee	27	H	5	0+45.7/Rt.	10.7'	8'	13' Rt.	148.5'	46'
33	8" X 4" Tee	11	H	5	0+54.1/Lt.	10.5'	7'	7' Lt.	140'	54'
34	8" X 4" Tee	26	H	5	1+23.7/Rt.	10.4'	13'	13' Rt.	70.5'	124'
35	4" Stub	25	H	5	1+94.2/Rt.	11.2'	13'	13' Rt.	@MH	194'
36	4" Stub	12	H	5	1+94.2/Lt.	11.6'	7'	7' Lt.	@MH	194'
37	8" X 4" Tee	24	H	5	2+69.7/Rt.	10'	13'	13' Rt.	144'	75.5'
38	8" X 4" Tee	13	H	5	2+77.2/Lt.	9.8'	7'	7' Lt.	136'	83'
39	8" X 4" Tee	23	H	5	3+37.5/Rt.	10.6'	13'	13' Rt.	76'	143'
40	8" X 4" Tee	14	H	5	3+57.1/Lt.	9.8'	13'	13' Lt.	56.5'	163'
41	4" Stub	22	H	5	4+13.6/Rt.	10.8'	13'	13' Rt.	@MH	219'
42	8" X 4" Tee	15	H	5	4+54.1/Lt.	9.7'	7'	7' Lt.	279.5'	40.5'
43	8" X 4" Tee	21	H	5	4+75.9/Rt.	9.6'	13'	13' Rt.	258'	62'
44	8" X 4" Tee	20	H	5	5+45.4/Rt.	9.5'	13'	13' Rt.	188'	132'
45	8" X 4" Tee	16	H	5	5+50.4/Lt.	9.8'	7'	7' Lt.	183'	137'
46	8" X 4" Tee	17	H	5	6+15.0/Lt.	9.8'	7'	7' Lt.	119'	201'
47	8" X 4" Tee	19	H	5	6+20.0/Rt.	9.8'	13'	13' Rt.	114'	206'
48	8" X 4" Tee	18	H	5	6+83.2/Lt.	10.4'	7'	7' Lt.	50'	270'

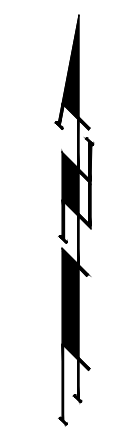
NOTE: Vertical Riser Pipe shall be extended to 2' minimum above ground water elevation and 4' maximum below proposed ground elevation.



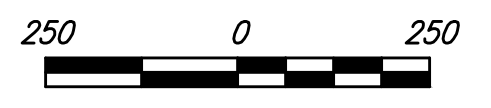
Baughman Turf Cr 3rd Addition - Phase 3B
LINE 5
 Sanitary Sewer Installation Plans

Baughman Company, P.A. 315 Ellis St. Wichita, KS 67211 P 316-262-7271 F 316-262-0149
 ENGINEERING | SURVEYING | PLANNING | LANDSCAPE ARCHITECTURE

PROJECT NUMBER: 461-25050
 DESIGN: NBW
 DRAWN: IAK
 APPROVED: [Signature]
 DATE: 4/19/11
 SCALE: Not to Scale
 SHEET: 6 OF 18



Scale: 1" = 250'



- = #4 REBAR W/ "BAUGHMAN" CAP (SET)
- ◇ = BOLT OVER STONE (FOUND)
- = 1/2" IRON IN THIMBLE (FOUND)
- △ = 1" IRON IN BROKEN STONE (FOUND)
- = #5 REBAR IN THIMBLE (FOUND)
- ⊙ = 1" SQUARE PIN OVER STONE (FOUND)
- ⊗ = 3/4" IRON (FOUND)
- ▽ = 1/2" IRON (FOUND)



Baughman		Tur000 Cr000 3rd Addit0n Coordinate Sheet	
Baughman Company, P.A. 315 Ellis St. Wichita, KS 67211 P 316.262.7271 F 316.262.0149 ENGINEERING SURVEYING PLANNING LANDSCAPE ARCHITECTURE			
PROJECT NUMBER 460 4 5050	DESIGN NBW	DRAWN LAK	DATE 4/11/11
REVISIONS:	APPROVED	SCALE N 1/4"	SHEET 16 OF 18

IRONS		
Point #	Northing	Easting
1	27408.50	27748.76
2	27406.82	27440.43
3	27407.14	27318.75
4	27407.36	27234.75
5	27409.65	26374.75
6	27409.88	26290.75
7	27411.88	25540.53
8	27981.91	25539.98
9	27981.51	25129.18
10	28240.67	25128.92
11	28240.49	24939.72
12	28930.50	24939.05
13	29014.50	24938.97
14	29940.46	24938.07
15	30014.00	24938.75
16	30098.00	24939.51
17	30421.04	24942.43
18	30395.11	25231.07
19	30610.28	25233.01
20	30524.78	26190.13
21	30499.70	26189.92
22	30485.79	26345.67
23	30550.98	27275.03
24	30602.88	27497.55
25	29998.28	28319.90
26	29736.28	28320.04
27	29626.13	28209.84
28	29289.96	28145.86
29	29255.58	28139.31
30	28876.91	28067.24
31	28584.63	27955.23
32	28301.77	27713.63
33	28138.05	27667.84
34	27990.87	27696.79
35	27849.53	27749.93
36	27487.36	27234.96
37	27487.14	27318.96
38	27536.32	27245.09
39	27536.15	27309.09
40	27731.24	27245.61
41	27731.07	27309.61
42	27807.89	27205.64
43	27860.47	27242.13
44	27838.55	27267.45
45	27783.83	27300.63
46	27971.75	27034.69
47	27993.52	26974.51
48	27932.38	26955.58
49	27912.65	27010.12
50	27826.46	26936.87
51	27826.31	26994.87
52	27618.89	26936.31
53	27618.73	26994.31
54	28044.42	26675.13
55	28043.99	26617.13
56	27979.96	26617.28
57	27980.40	26675.28
58	27619.74	26616.31
59	27619.59	26674.31
60	27489.88	26290.97
61	27489.65	26374.97
62	27538.84	26301.10
63	27538.67	26365.10
64	27872.48	26301.99
65	27872.31	26365.99

IRONS		
Point #	Northing	Easting
66	27905.27	26298.85
67	27917.59	26361.65
68	27923.94	26295.18
69	27936.26	26357.99
70	27946.60	26399.29
71	28008.35	26382.47
72	27974.32	26125.45
73	27910.32	26125.28
74	27974.51	26054.26
75	27974.68	25990.26
76	27910.67	25993.09
77	27910.52	26051.09
78	27621.40	25992.32
79	27621.25	26050.32
80	27910.81	25941.20
81	27974.81	25941.37
82	27970.70	25786.25
83	28014.66	25748.42
84	27986.71	25715.93
85	27942.74	25753.76
86	27888.80	25671.07
87	27888.85	25729.07
88	27622.15	25671.33
89	27622.21	25729.33
90	28142.58	25709.82
91	28142.65	25773.82
92	28562.97	25709.41
93	28563.04	25773.41
94	28674.68	25724.93
95	28657.18	25786.49
96	28712.26	25735.61
97	28694.76	25797.17
98	27895.80	27361.86
99	27841.08	27395.04
100	27947.00	27487.52
101	28002.30	27505.25
102	27994.20	27436.53
103	27999.52	27512.64
104	27945.24	27492.20
105	27845.66	27560.92
106	27845.51	27618.92
107	27618.44	27560.31
108	27618.29	27618.31
109	28288.87	27518.96
110	28271.63	27580.59
111	28491.08	27626.77
112	28449.51	27675.43
113	28566.50	27691.19
114	28524.94	27739.86
115	28614.25	27729.43
116	28666.68	27766.12
117	29014.19	27906.06
118	29002.23	27968.93
119	29341.60	27968.38
120	29329.63	28031.25
121	29483.48	27838.97
122	29547.18	27832.83
123	29614.81	27541.44
124	29664.08	27510.84
125	29769.11	27478.13
126	29777.75	27541.54
127	29833.79	27526.59
128	29962.51	27396.10
129	29902.90	27372.81
130	29945.04	27264.97

IRONS		
Point #	Northing	Easting
131	29989.72	27326.45
132	30010.18	27272.18
133	30018.71	27205.67
134	29954.75	27207.91
135	30012.44	27026.92
136	30010.40	26968.90
137	30005.74	26836.22
138	29941.78	26838.46
139	29995.19	26730.15
140	29983.77	26673.28
141	29901.66	26461.55
142	29845.70	26492.61
143	29812.19	26426.03
144	29872.41	26403.82
145	29849.89	26350.15
146	29854.90	26348.53
147	29787.72	26366.65
148	29779.67	26369.20
149	29798.99	26430.21
150	29731.65	26100.33
151	29730.05	26042.35
152	29765.61	25792.70
153	29783.33	25737.47
154	29956.60	25544.15
155	29904.76	25506.63
156	29937.71	25456.08
157	29997.43	25480.61
158	30001.91	25482.45
159	30023.95	25428.80
160	29964.69	25404.46
161	29959.75	25402.43
162	30086.09	25150.46
163	30022.10	25149.88
164	30022.29	25128.79
165	30086.29	25128.41
166	30195.14	25129.39
167	30195.67	25071.39
168	30091.65	25070.46
169	30097.10	25039.50
170	30031.10	25038.74
171	30018.15	25070.86
172	28882.56	27743.43
173	28630.13	27706.74
174	28670.71	27639.23
175	28727.71	27668.32
176	28794.24	27537.95
177	28820.60	27486.29
178	28830.02	27467.83
179	28773.01	27438.74
180	28816.15	27139.85
181	28811.50	27141.06
182	28795.44	27079.11
183	28801.88	27077.44
184	28871.14	27092.55
185	28883.51	26740.78
186	28822.84	26720.40
187	28918.61	26573.78
188	28921.58	26509.85
189	28960.37	26511.65
190	28957.39	26575.59
191	28849.68	26405.32
192	28819.83	26411.29
193	28808.45	26354.42
194	28838.31	26348.45
195	28868.09	26233.08

IRONS		
Point #	Northing	Easting
196	28844.22	26180.23
197	28811.46	26121.63
198	28757.09	26155.39
199	28721.09	26085.33
200	28700.51	26024.73
201	28757.08	25811.78
202	28793.73	25822.20
203	28809.59	25766.41
204	28772.95	25755.99
205	28834.36	25643.19
206	28783.46	25604.39
207	28876.13	25447.00
208	28938.04	25465.08
209	28942.73	25466.44
210	28958.98	25410.77
211	28897.44	25392.87
212	28892.39	25391.33
213	29004.69	25137.98
214	28940.69	25138.04
215	28937.47	25080.05
216	28930.59	25039.05
217	29014.59	25038.97
218	29007.80	25079.98
219	28776.65	25388.57
220	28790.23	25444.95
221	28585.21	25411.39
222	28585.26	25469.39
223	28244.39	25411.72
224	28244.44	25469.72
225	28129.87	25392.27
226	28187.86	25379.21
227	28450.52	25080.52
228	28450.58	25138.52
229	29248.44	25079.74
230	29248.49	25137.74
231	29039.16	25414.09
232	29050.75	25470.92
233	29179.96	25399.81
234	29180.01	25457.81
235	29196.53	25399.79
236	29196.59	25457.79
237	28997.06	25747.63
238	29023.67	25799.17
239	29090.46	25724.90
240	29090.51	25782.90
241	29100.44	25724.89
242	29100.49	25782.89
243	28060.20	26000.19
244	28045.70	26062.52
245	28179.19	26013.79
246	28179.25	26077.79
247	28412.28	26013.56
248	28412.34	26077.56
249	28628.34	26030.79
250	28618.13	26093.97
251	28977.36	26120.08
252	29001.24	26172.94
253	28661.03	26360.81
254	28654.62	26418.45
255	28199.15	26706.79
256	28148.68	26735.38
257	28304.10	26768.14
258	28303.95	26826.14
259	28443.54	26768.51
260	28443.38	26826.51

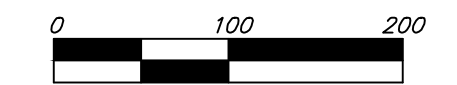
IRONS		
Point #	Northing	Easting
261	28044.78	27008.20
262	27998.16	27052.05
263	28226.23	27086.93
264	28184.46	27148.05
265	28183.92	27160.57
266	28241.87	27163.07
267	28242.39	27150.98
268	28492.93	27151.65
269	28550.93	27151.80
270	28492.63	27264.97
271	28550.63	27265.12
272	28722.89	27088.26
273	28722.72	27152.26
274	28974.39	27564.77
275	28948.02	27616.43
276	29100.40	27607.92
277	29089.56	27664.90
278	29119.78	27611.61
279	29108.93	27668.59
280	29636.22	27465.99
281	29586.95	27496.59
282	29558.73	27357.16
283	29615.24	27371.91
284	29856.96	27702.88
285	29798.96	27702.91
286	29857.19	28149.97
287	29799.17	28100.65
288	29999.04	27330.09
289	30020.15	27276.07
290	30090.08	27289.53
291	30089.62	27347.53
292	30350.68	27291.57
293	30350.23	27349.57
294	30295.97	26971.13
295	30295.52	27029.13
296	30055.49	26658.88
297	30066.91	26715.75
298	30148.83	26649.97
299	30148.38	26707.97
300	30266.87	26650.90
301	30266.41	26708.89
302	29986.68	26328.69
303	29986.23	26386.69
304	30232.58	26330.62
305	30232.13	26388.62
306	30332.47	26320.10
307	30278.29	26299.41
308	29605.	

TURKEY CREEK 3RD ADDITION WICHITA, SEDGWICK COUNTY, KANSAS

BOARD OF COUNTY COMMISSIONERS
OF SEDGWICK COUNTY, KANSAS
(DOC.#/FLM-PC: 28758025)

BOARD OF COUNTY COMMISSIONERS
OF SEDGWICK COUNTY, KANSAS
(DOC.#/FLM-PC: 28758025)

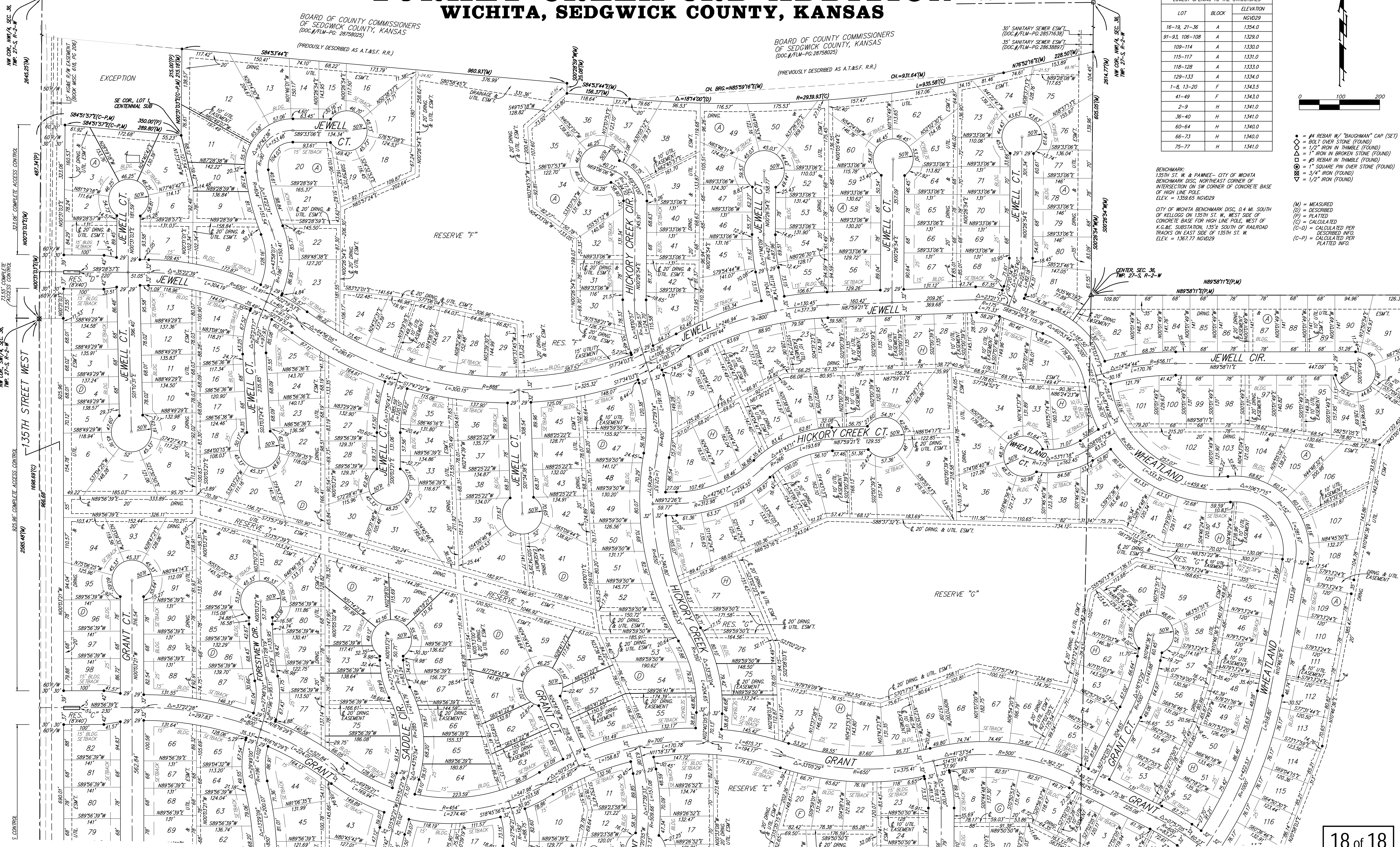
LOT	BLOCK	ELEVATION
16-19, 21-36	A	1354.0
91-93, 106-108	A	1329.0
109-114	A	1330.0
115-117	A	1331.0
118-128	A	1333.0
129-133	A	1334.0
1-8, 13-20	F	1343.5
41-49	F	1343.0
2-9	H	1341.0
36-40	H	1341.0
60-64	H	1340.0
66-73	H	1340.0
75-77	H	1341.0



- = #4 REBAR W/ "BAUGHMAN" CAP (SET)
- = BOLT OVER STONE (FOUND)
- = 1 1/2" IRON W/ THIMBLE (FOUND)
- = 1" IRON IN BROKEN STONE (FOUND)
- = #5 REBAR IN THIMBLE (FOUND)
- = 1" SQUARE PIN OVER STONE (FOUND)
- = 3/4" IRON (FOUND)
- = 1/2" IRON (FOUND)

BENCHMARK:
135TH ST. W. & PAWNEE - CITY OF WICHITA
BENCHMARK DISC. NORTHEAST CORNER OF
CONCRETE BASE FOR HIGH LINE POLE, WEST
OF K.G.R.E. SUBSTATION, 135 1/4 SOUTH OF RAILROAD
TRACKS ON EAST SIDE OF 135TH ST. W.
ELEV. = 1359.65 NGVD29

CITY OF WICHITA BENCHMARK DISC. 0.4 MI. SOUTH
OF KELLOGG ON 135TH ST. W., WEST SIDE OF
CONCRETE BASE FOR HIGH LINE POLE, WEST
OF K.G.R.E. SUBSTATION, 135 1/4 SOUTH OF RAILROAD
TRACKS ON EAST SIDE OF 135TH ST. W.
ELEV. = 1367.77 NGVD29



NOTE:
A master grading plan for drainage has been developed for this subdivision and is on file with the City of Wichita, Kansas. All drainage easements, right-of-ways, or reserves shall remain at established grades or as modified with the approval of the City Engineer of the City of Wichita, Kansas. No obstructions which impede the flow of this drainage system shall be allowed.