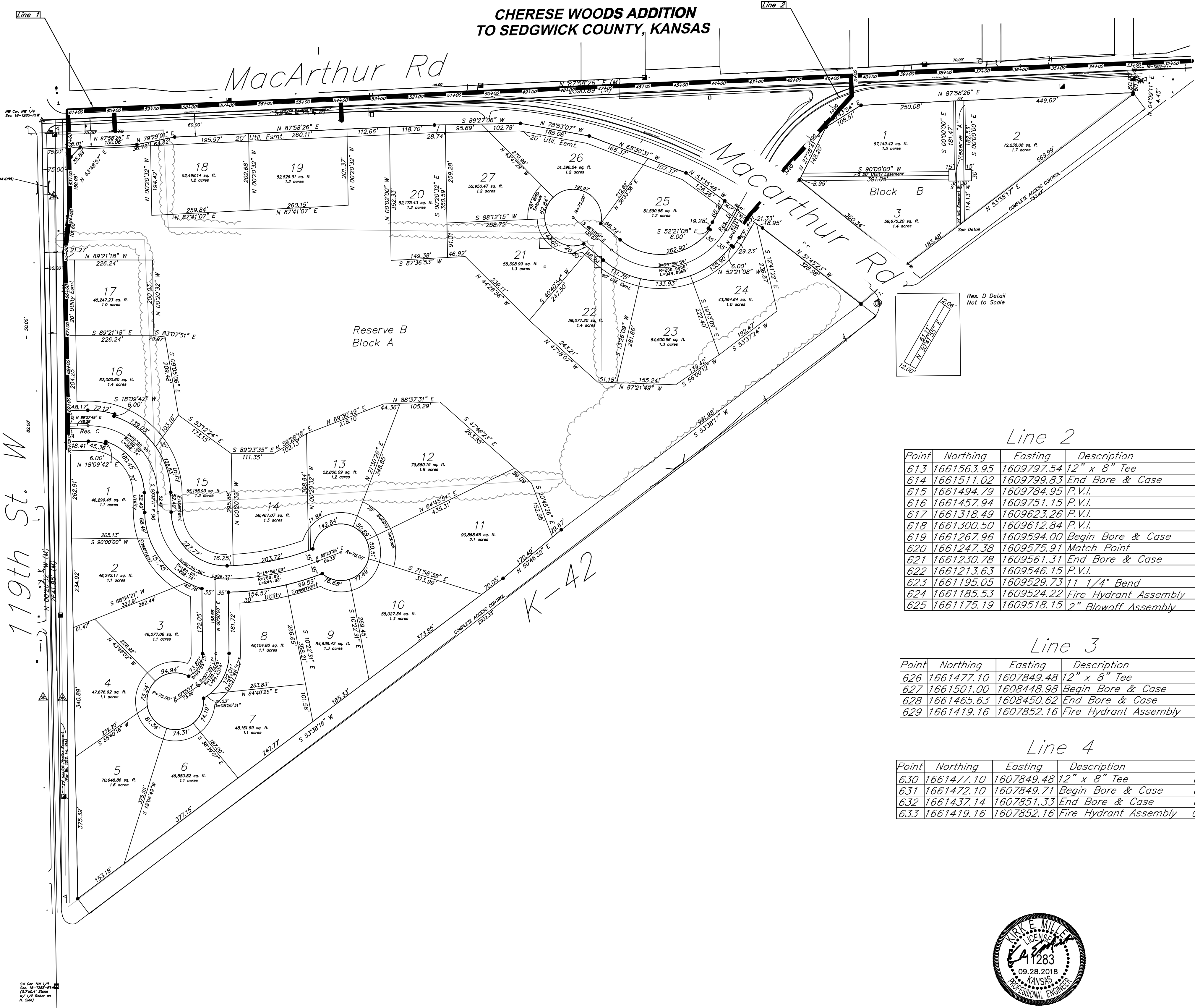


CHERESE WOODS ADDITION  
TO SEDGWICK COUNTY, KANSAS



Line 1

Point	Northing	Easting	Description
559	1661603.05	1610695.36	Match Point 31+50.00
560	1661597.16	1610546.02	2' Deflection 32+99.46
561	1661589.26	1610345.63	P.V.I. 35+00.00
562	1661587.28	1610295.67	P.V.I. 35+50.00
563	1661585.31	1610245.71	Fire Hydrant Assembly 36+00.00
564	1661584.33	1610220.73	P.V.I. 36+25.00
565	1661583.74	1610205.74	Begin Directional Drill 36+40.00
566	1661580.97	1610135.80	End Directional Drill 37+10.00
567	1661576.44	1610020.89	P.V.I. 38+25.00
568	1661574.47	1609970.93	Begin Directional Drill 38+75.00
569	1661572.73	1609926.96	End Directional Drill 39+19.00
570	1661572.50	1609920.96	45' Bend 39+25.00
571	1661569.16	1609917.88	45' Bend 39+29.55
572	1661564.05	1609799.74	12" x 8" MJ Tee 40+47.79
573	1661557.41	1609646.35	Fire Hydrant Assembly 42+01.33
574	1661551.16	1609501.84	P.V.I. 43+45.98
575	1661548.13	1609432.21	P.V.I. 44+15.68
576	1661544.35	1609347.97	Match Point 45+00.00
577	1661544.13	1609343.06	P.V.I. 45+04.92
578	1661530.93	1609049.00	Fire Hydrant Assembly 47+99.27
579	1661530.50	1609039.40	P.V.I. 48+08.88
580	1661524.18	1608898.42	Match Point 49+50.00
581	1661521.31	1608834.49	Begin Directional Drill 50+14.00
582	1661518.17	1608764.55	End Directional Drill 50+84.00
583	1661517.48	1608749.30	P.V.I. 50+99.27
584	1661510.37	1608590.73	2' Vertical Deflection 52+58.00
585	1661507.81	1608533.79	2' Vertical Deflection 53+15.00
586	1661507.36	1608523.80	2' Vertical Deflection 53+25.00
587	1661504.81	1608466.85	2' Vertical Deflection 53+82.00
588	1661504.00	1608448.88	12"x8" MJ Tee 54+00.00
589	1661490.58	1608149.91	P.V.I. 56+99.27
590	1661484.98	1608025.03	P.V.I. 58+24.27
591	1661483.82	1607999.33	Match Point 58+50.00
592	1661479.34	1607899.43	P.V.I. 59+50.00
593	1661477.10	1607849.48	12"x8" MJ Tee 60+00.00
594	1661472.65	1607750.31	P.V.I. 60+99.27
595	1661471.63	1607727.71	90' Bend 61+21.89
596	1661468.52	1607727.79	Begin Bore & Case 61+25.00
597	1661428.53	1607728.38	End Bore & Case 61+65.00
598	1661418.78	1607728.53	P.V.I. 61+74.76
599	1661376.33	1607729.19	P.V.I. 62+17.21
600	1661343.55	1607729.69	Match Point 62+50.00
601	1661327.54	1607729.94	P.V.I. 62+66.00
602	1661263.55	1607730.94	P.V.I. 63+30.00
603	1661213.06	1607731.72	P.V.I. 63+80.50
604	1661196.89	1607731.97	11 1/4' Bend 63+96.67
605	1661098.71	1607719.01	11 1/4' Bend 64+95.70
606	1661030.02	1607720.17	P.V.I. 65+84.40
607	1660994.43	1607720.77	Fire Hydrant Assembly 66+00.00
608	1660984.44	1607722.46	Match Point 67+00.00
609	1660602.76	1607727.39	12" x 8" Tee 69+91.73
610	1660594.48	1607727.53	Fire Hydrant Assembly 70+00.00
611	1660579.48	1607727.78	2" Blowoff Assembly 70+15.00

Line 2

Point	Northing	Easting	Description
613	1661563.95	1609797.54	12" x 8" Tee 0+00.00
614	1661511.02	1609799.83	End Bore & Case 0+52.99
615	1661494.79	1609784.95	P.V.I. 0+75.00
616	1661457.94	1609751.15	P.V.I. 1+25.00
617	1661318.49	1609623.26	P.V.I. 3+14.21
618	1661300.50	1609612.84	P.V.I. 3+35.00
619	1661267.96	1609594.00	Begin Bore & Case 3+72.60
620	1661247.38	1609575.91	Match Point 4+00.00
621	1661230.78	1609561.31	End Bore & Case 4+22.11
622	1661213.63	1609546.15	P.V.I. 4+45.00
623	1661195.05	1609529.73	11 1/4' Bend 4+69.79
624	1661185.53	1609524.22	Fire Hydrant Assembly 4+80.79
625	1661175.19	1609518.15	2" Blowoff Assembly 4+92.79

Line 3

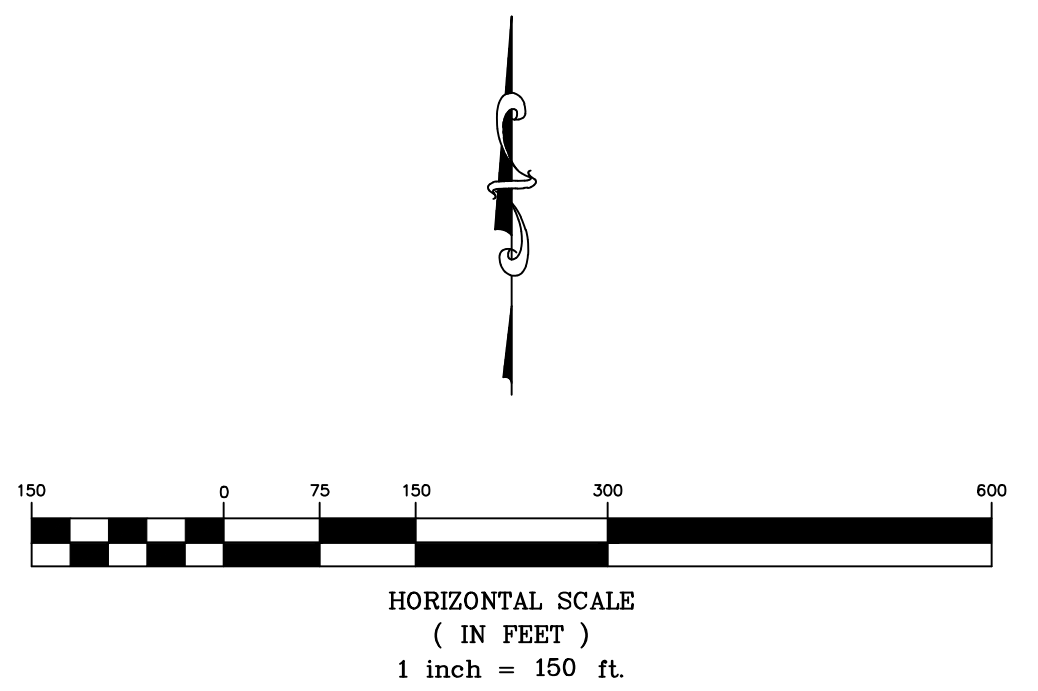
Point	Northing	Easting	Description
626	1661477.10	1607849.48	12" x 8" Tee 0+00.00
627	1661501.00	1608448.98	Begin Bore & Case 0+03.00
628	1661465.63	1608450.62	End Bore & Case 0+38.00
629	1661419.16	1607852.16	Fire Hydrant Assembly 0+58.00

Line 4

Point	Northing	Easting	Description
630	1661477.10	1607849.48	12" x 8" Tee 0+00.00
631	1661472.10	1607849.71	Begin Bore & Case 0+05.00
632	1661437.14	1607851.33	End Bore & Case 0+40.00
633	1661419.16	1607852.16	Fire Hydrant Assembly 0+58.00



THIS SHEET HAS BEEN  
SIGNED, SEALED AND  
DATED ELECTRONICALLY



K-42 Waterline  
Control Map  
Wichita, Kansas

	PROJECT NUMBER 448-90885			SHEET <b>2.2</b>
	KEM NO. 18002	FILE	DATE 05/2018	
DESIGN KM	DRAWN SS	REVISED		