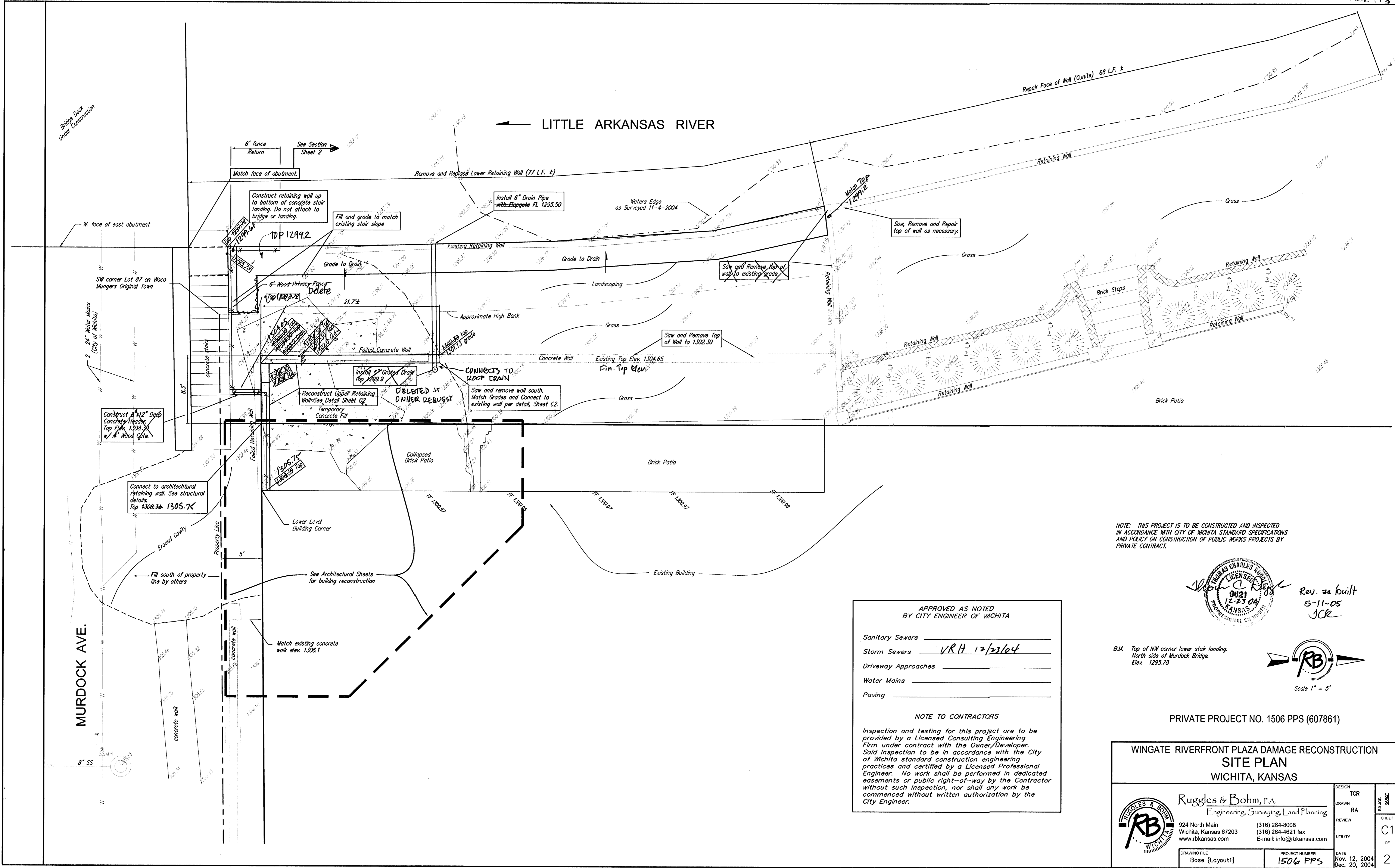
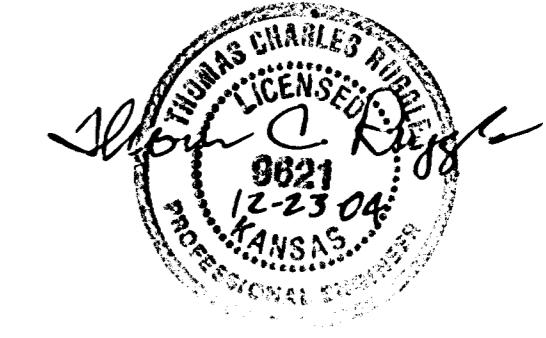


LITTLE ARKANSAS RIVER

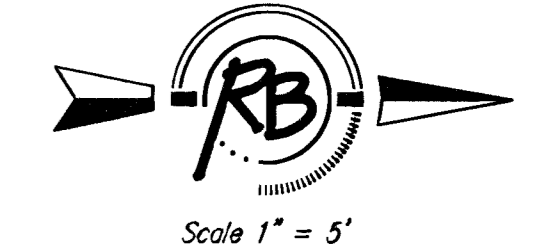


NOTE: THIS PROJECT IS TO BE CONSTRUCTED AND INSPECTED IN ACCORDANCE WITH CITY OF WICHITA STANDARD SPECIFICATIONS AND POLICY ON CONSTRUCTION OF PUBLIC WORKS PROJECTS BY PRIVATE CONTRACT.



Rev. as built
5-11-05
SCR

B.M. Top of NW corner lower stair landing, North side of Murdock Bridge. Elev. 1295.78



Scale 1" = 5'

APPROVED AS NOTED BY CITY ENGINEER OF WICHITA

Sanitary Sewers _____

Storm Sewers 1/18 12/23/04

Driveway Approaches _____

Water Mains _____

Paving _____

NOTE TO CONTRACTORS

Inspection and testing for this project are to be provided by a Licensed Consulting Engineering Firm under contract with the Owner/Developer. Said inspection to be in accordance with the City of Wichita standard construction engineering practices and certified by a Licensed Professional Engineer. No work shall be performed in dedicated easements or public right-of-way by the Contractor without such inspection, nor shall any work be commenced without written authorization by the City Engineer.

PRIVATE PROJECT NO. 1506 PPS (607861)

WINGATE RIVERFRONT PLAZA DAMAGE RECONSTRUCTION
SITE PLAN
WICHITA, KANSAS

Ruggles & Bohm, P.A.
Engineering, Surveying, Land Planning
924 North Main
Wichita, Kansas 67203
www.rbkansas.com

(316) 284-8008
(316) 284-4621 fax
E-mail: info@rbkansas.com

DESIGN	TCR	SHEET C1 OF 2
DRAWN	RA	
REVIEW		
UTILITY		
DRAWING FILE	PROJECT NUMBER	DATE
Base {Layout}	1506 PPS	Nov. 12, 2004 Dec. 20, 2004

18 07 01 04