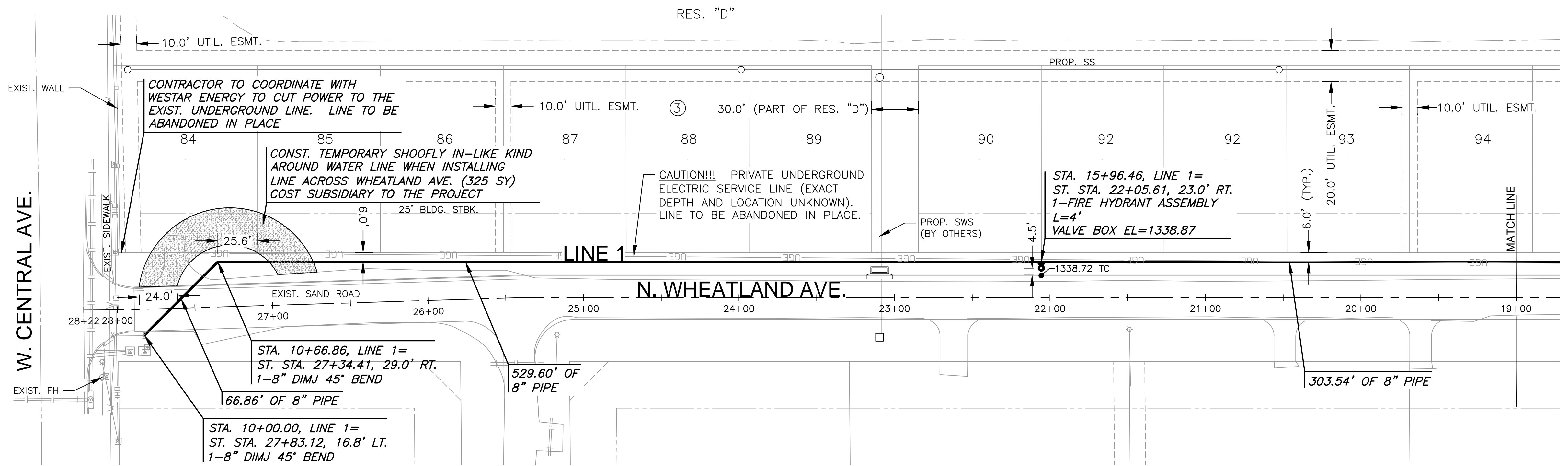


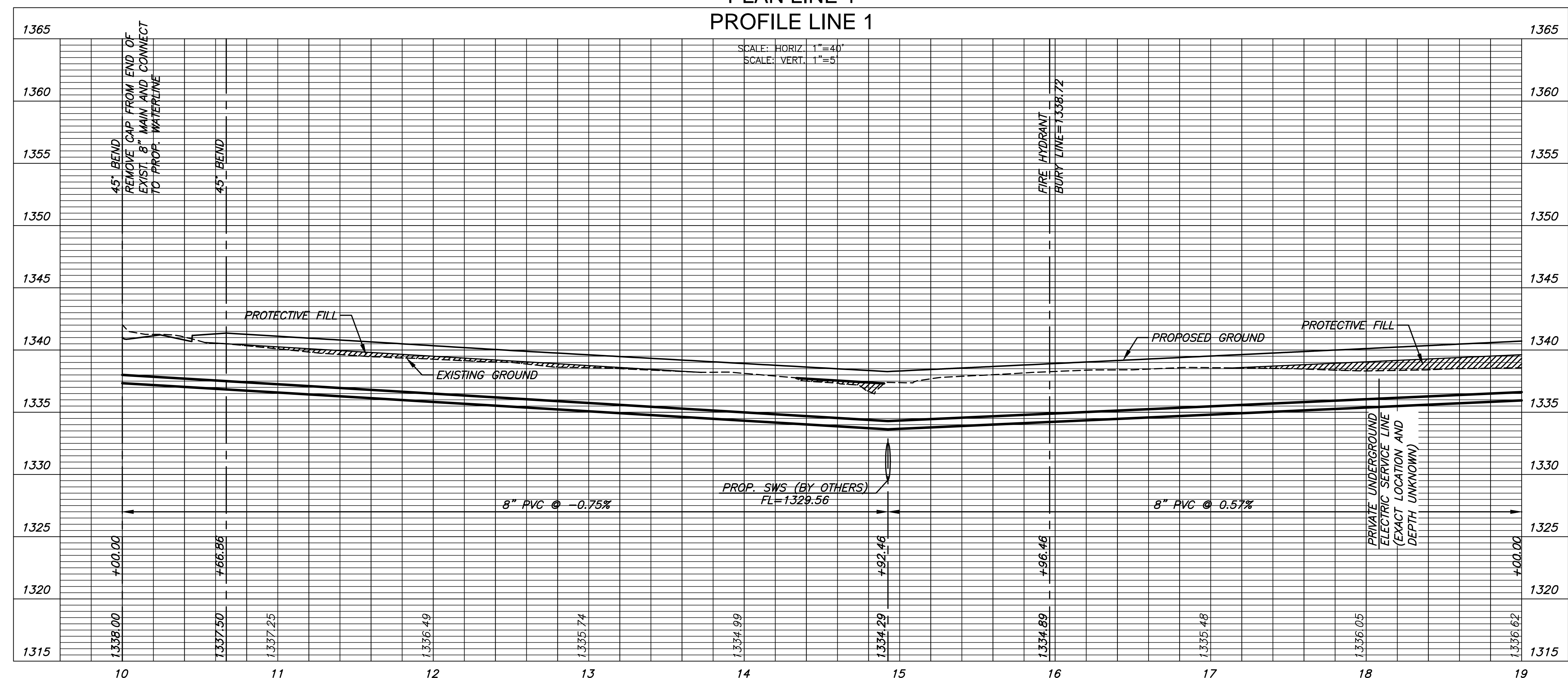
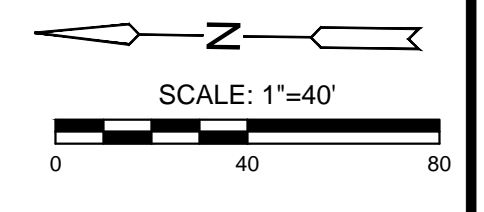
J:\PROJECTS\2018\1301010385_COW BAY COUNTRY DEVELOPMENT\5-CIVIL\CAD\WTRPHASE 3\13385_05_3200.DWG
 PLOTTED: Wednesday, December 05, 2018 @ 10:09AM



NOTE:
 CONTRACTOR TO VERIFY LOCATION AND ELEVATION OF EXISTING WATER LINE AND PRIVATE UNDERGROUND ELECTRIC SERVICE LINE PRIOR TO CONSTRUCTION.

PRIVATE ELECTRIC LINE OWNED BY:
 VAL ENERGY (316-263-6688)
 COORDINATE WITH TODD ALLAM (316-619-3212)
 BEFORE CUTTING POWER AND EXPOSING ELECTRIC LINE.

NOTE:
 PROP. WATER LINE ACROSS WHEATLAND AVE. SHOULD BE INSTALLED AND BACKFILLED IN 1 DAY. CONTRACTOR TO USE APPROPRIATE TRAFFIC CONTROL DURING CONSTRUCTION. AFTER CONSTRUCTION, REMOVE ANY MATERIAL DELIVERED TO THE SITE FOR THE CONSTRUCTION OF THE SHOOFLY.



WATER DISTRIBUTION PLANS FOR
BAY COUNTRY ADDITION (PHASE 3)
 WICHITA, KANSAS

©2018
 MKEC Engineering
 All Rights Reserved
 www.mkec.com
 These drawings and their contents, including, but not limited to, all concepts, designs, & ideas are the exclusive property of MKEC Engineering (MKEC), and may not be used or reproduced in any way without the express consent of MKEC.

PLAN AND
 PROFILE LINE 1

PROJECT NO.	448-90928
DATE	DEC. 2018
SCALE	1"=40'
DESIGNED	GJA
DRAWN	CRM
CHECKED	GJA

NO.	REVISION	DATE