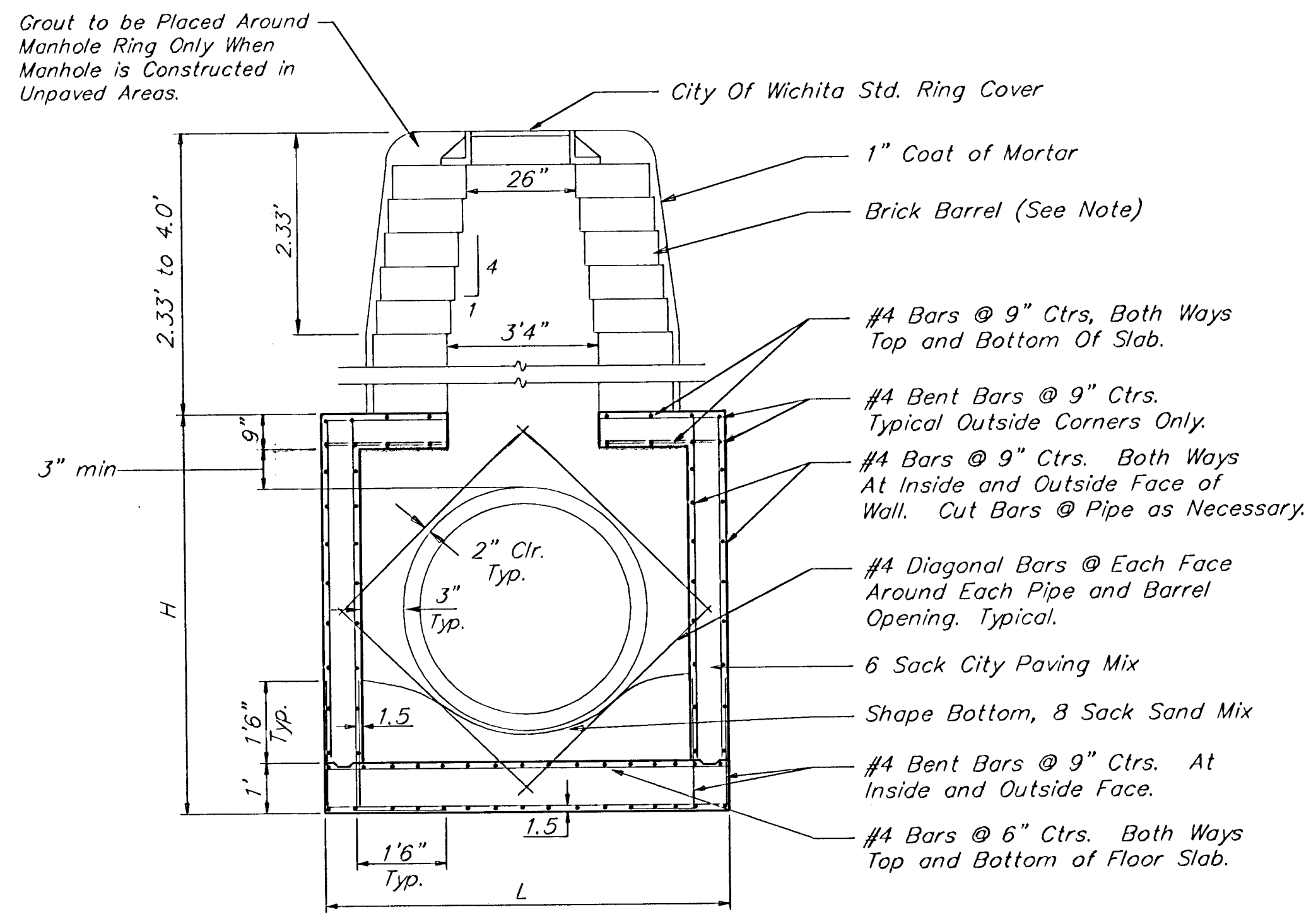
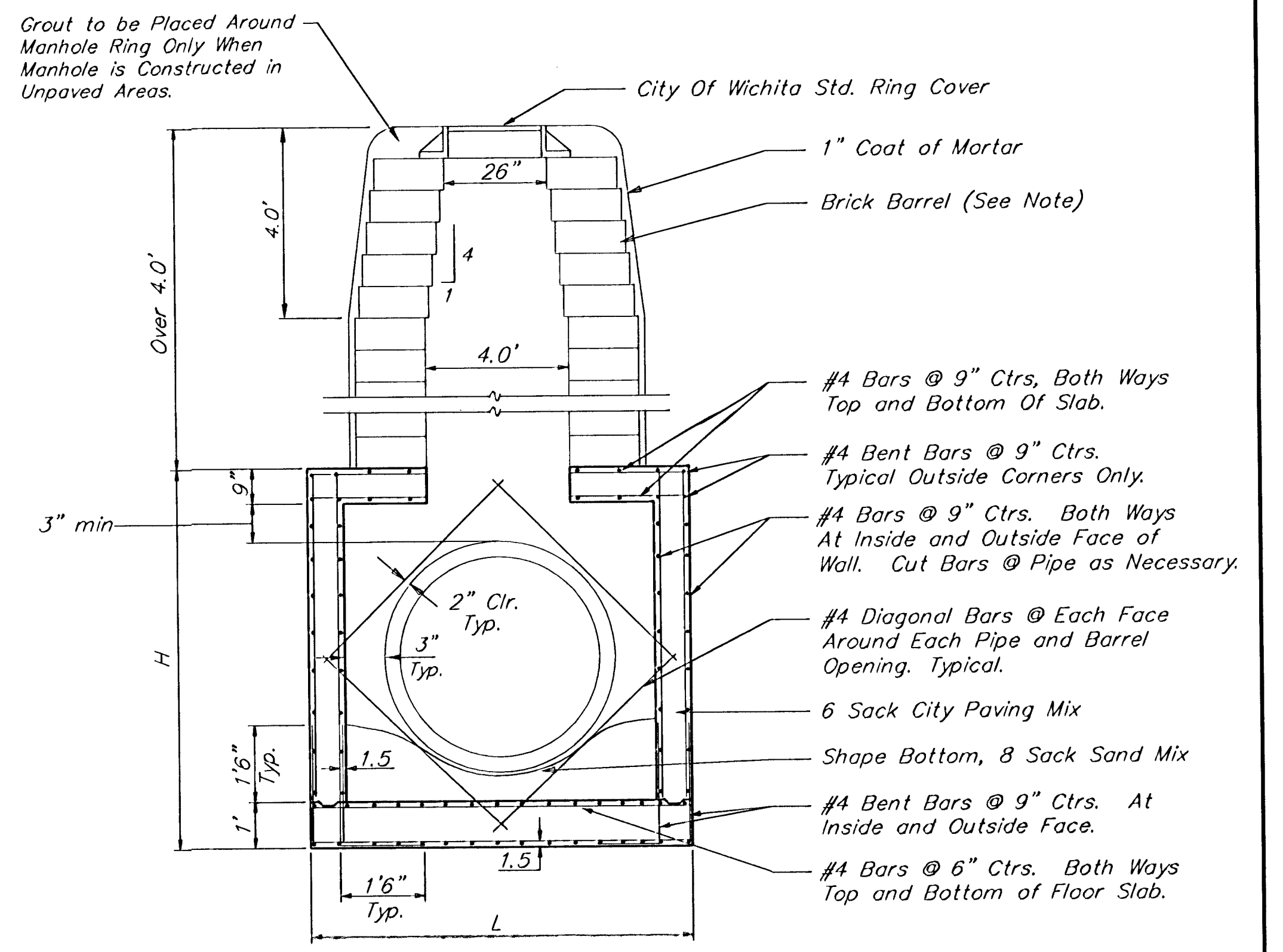


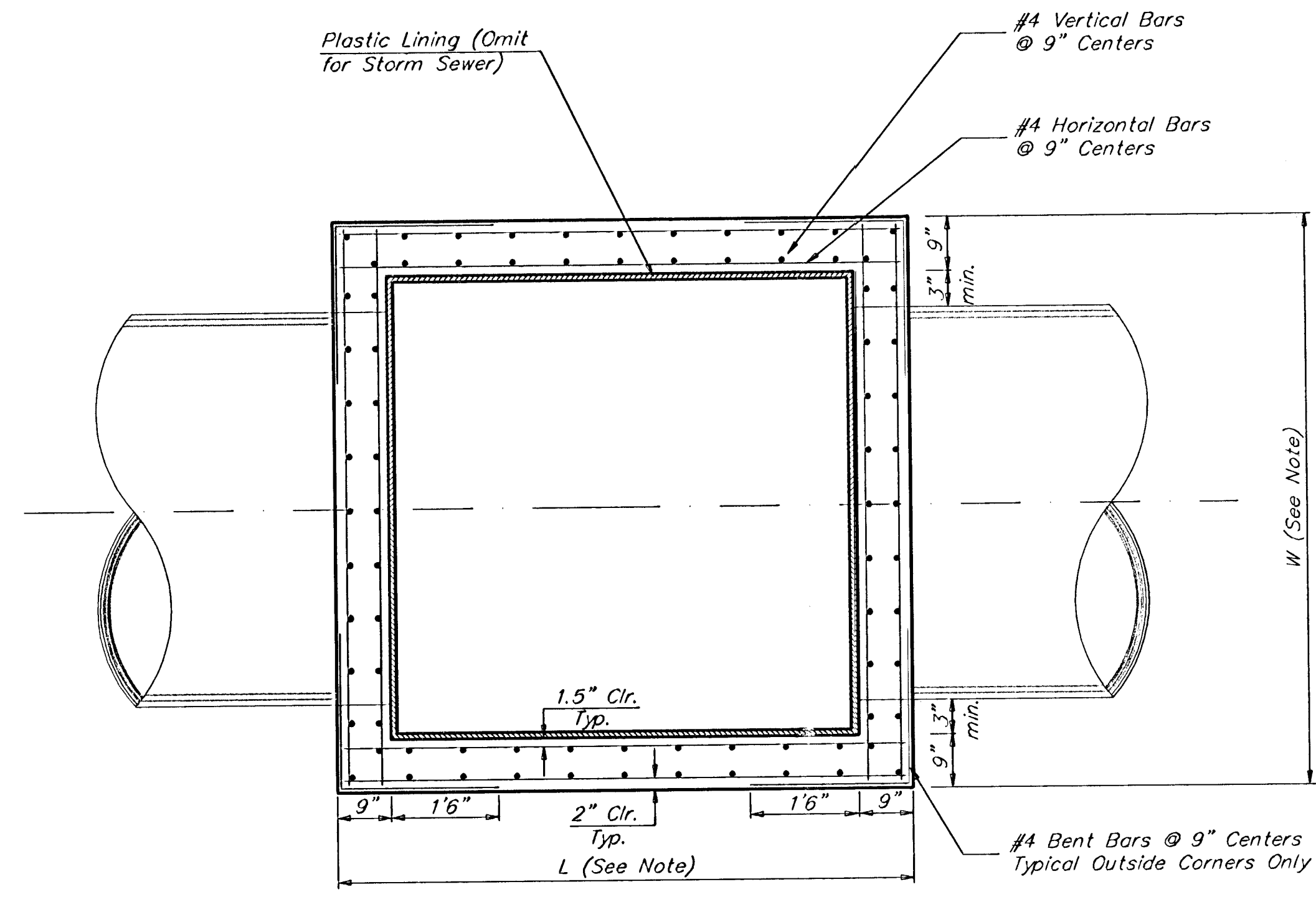
REINFORCED CONCRETE MANHOLE
DEPTH OF STACK: 0' TO 2.33'



REINFORCED CONCRETE MANHOLE
DEPTH OF STACK: 2.33' TO 4.0'



REINFORCED CONCRETE MANHOLE
DEPTH OF STACK: OVER 4.0'




TOP VIEW

Notes:

Brick barrels less than 16' deep shall have 8" walls except when located within public street or alley pavement; then the wall shall be 12". Brick barrels more than 16' deep shall have 12" walls. The "L" and "W" dimensions shall be a minimum of 5'6" for brick barrels with 8" walls and 6'2" for brick barrels with 12" walls when the brick barrels are over 4' in height. Completed manhole shall be without leaks and watertight.

Concrete wall thicknesses shown represents manhole type located within traffic bearing areas. Manhole wall, base, & top dimensions may be reduced when manholes are not subject to vehicle loads. Contractor shall be required to submit shop drawings to the Engineer for approval.

 CITY OF WICHITA STANDARD REINFORCED CONCRETE MANHOLE DETAIL	
<small>Baughman Company, P.A. 313 1/2 St. W. Wichita, KS 67211 P 316-262-7271 F 316-262-0149 ENGINEERING SURVEYING PLANNING LANDSCAPE ARCHITECTURE</small>	
PROJECT NUMBER 1701 PPS (607861)	DESIGN C.O.W.
REVISIONS:	DRAWN STAFF
APPROVED	DATE 09/06
SCALE NONE	SHEET 7 OF 10
<small>Comotara-Michaela Wise-Vrennchity</small>	