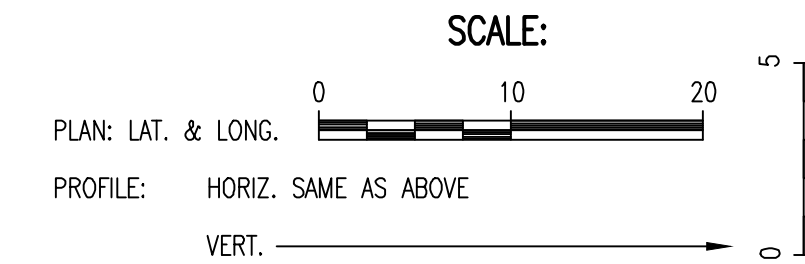


6000 = COORDINATE LABEL

SEE SHEET NO. C3 FOR WATERLINE COORDINATES AND EXISTING PIPE ABANDONMENT.
SEE SHEET NO. C9 FOR PAVING AND GRADING.



WL No. 4, Sta. 0+00.00=
@ Exposition, Sta. 20+34.56, 11.5' Lt.
Existing 8" Waterline *
Remove existing pipe as necessary and Connect to existing 8" Waterline. Connection to existing pipe shall be made with clean swabbed pipe. (Fittings, adaptors, and other incidentals as necessary)

@ McLean (Roadway), Sta. 10+00.00=
@ Exposition (Extended), Sta. 20+00.00

WL No. 4, Sta. 0+30.11=
@ Exposition, Sta. 20+42.62, 18' Lt.
1- 8" 11 1/4" RJ Bend (Horizontal)
Defl. = 15°31'29"

WL No. 5, Sta. 0+00.00=
WL No. 3, Sta. 0+77.55=
@ Exposition, Sta. 20+63.62, 25' Lt.
24" x 24" RJ Tee (with Thrust Block)
MATCH POINT

WL No. 5, Sta. 0+16.00=
@ Exposition, Sta. 20+63.62, 9' Lt.
Existing 24" Waterline *
1- 90° 24" Bend (with Thrust Block)
Remove existing pipe as necessary and connect to existing 24" Waterline. Connection to existing pipe shall be made with clean swabbed pipe. (Subsidiary to other incidentals as necessary)

Existing 8" Vertical Pipe Deflection per record information.

CAUTION !!!
30" VCP Storm Water Sewer

CAUTION !!!
Existing 24" Waterline

LINE NO. 3
See sheet no. C6

WL No. 4, Sta. 0+37.13=
WL No. 3, Sta. 0+56.55=
@ Exposition, Sta. 20+42.62, 25' Lt.
24" x 8" RJ Tee
MATCH POINT

LINE NO. 3
See sheet no. C6

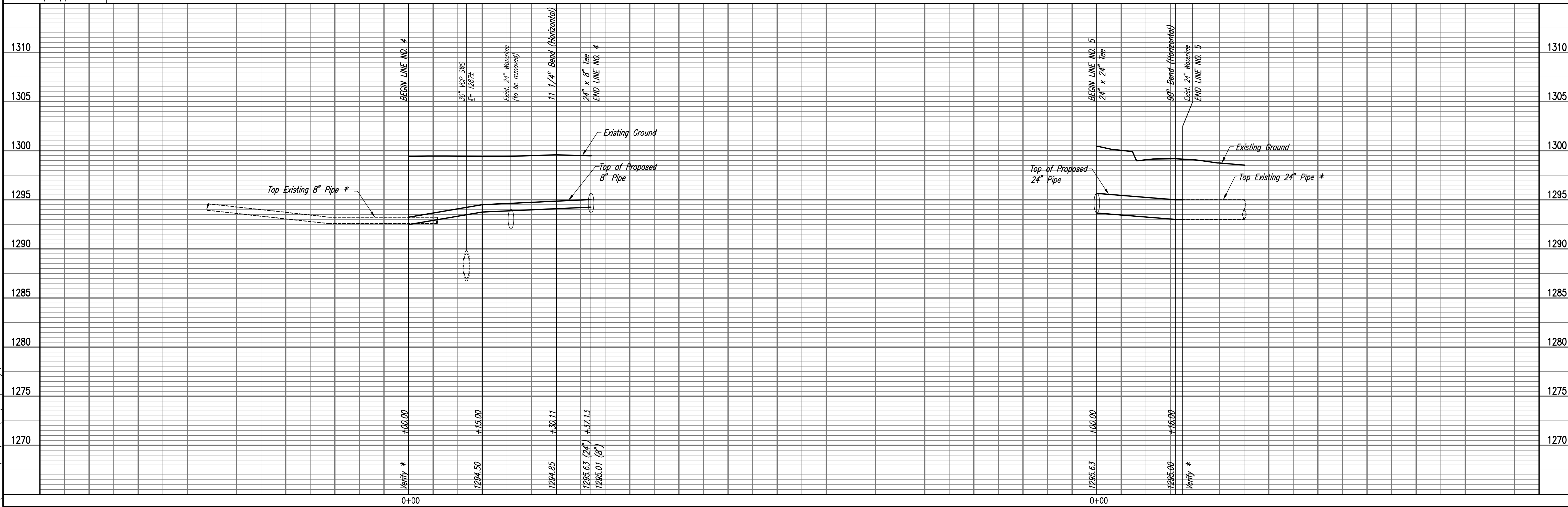
* PRIOR TO BEGINNING CONSTRUCTION, THE CONTRACTOR SHALL EXCAVATE THE EXISTING 8" WATERLINE AT WL 4, STA. 0+00.00 TO VERIFY PIPE SIZE, TYPE, FITTINGS, HORIZONTAL AND VERTICAL LOCATION AND PIPE SLOPE. THE CONTRACTOR SHALL REPORT HIS FINDINGS TO THE ENGINEER SO THAT ANY NECESSARY PLAN MODIFICATIONS CAN BE MADE. ANY ADDITIONAL LABOR OR MATERIALS NECESSARY TO COMPLETE THE CONNECTION SHALL BE CONSIDERED SUBSIDIARY TO THE PROJECT.

* PRIOR TO BEGINNING CONSTRUCTION, THE CONTRACTOR SHALL EXCAVATE THE EXISTING 24" WATERLINE AT WL 5, STA. 0+16.00 TO VERIFY PIPE SIZE, TYPE, FITTINGS, HORIZONTAL AND VERTICAL LOCATION AND PIPE SLOPE. THE CONTRACTOR SHALL REPORT HIS FINDINGS TO THE ENGINEER SO THAT ANY NECESSARY PLAN MODIFICATIONS CAN BE MADE. ANY ADDITIONAL LABOR OR MATERIALS NECESSARY TO COMPLETE THE CONNECTION SHALL BE CONSIDERED SUBSIDIARY TO THE PROJECT.

Unless noted otherwise, elevations shown are top of pipe

WATERLINE NO. 4

WATERLINE NO. 5



WATERLINE MODIFICATIONS
VALVE VAULT AND WL RECONNECTIONS AT McLEAN AND EXPOSITION
WATERLINE NO. 4 AND NO. 5

PROFESSIONAL ENGINEERING CONSULTANTS P.A.
308 SOUTH TOPEKA WICHITA, KS 67202
316-262-2691 www.pec1.com

Designed By: TBK
Drawn By: CSL, KTD
Job No.: 35-160312-14-0042
Date: JULY 2018

Saved: 11-21-2018, 3:38:42 PM by: KURFIS,DEKAT
Plot Scale: 1:1 11-21-2018, 3:49:25 PM by: KURFIS,DEKAT
U:\Wichita-Civil\2018\160312\14\Drawings\160312-014-007-WATERLINE NO 4 AND NO. 5