

BENCHMARKS:

BM #1: "□" Cut on T.C., 12' west of east end of N curb return on the north drive entrance of the Church of the Magdalen.
Elev. = 190.48 (City Datum)

BM #2: RR spike on the west face of PP on the east side of 127th Street East, adjacent to the south line of The Fairmont Addition.
Elev. = 187.25 (City Datum)

BM #3: RR spike on the east face of PP on the west side of 127th Street East, 37' N and 13' E of the NE corner of Lot 1, Block H, The Fairmont Addition.
Elev. = 189.19 (City Datum)

Static WS Elev. = 189.60
100-yr WS elev. = 193.50
Bottom Elev. = 181.00

CAUTION!
Ex. 8" SS Crossing

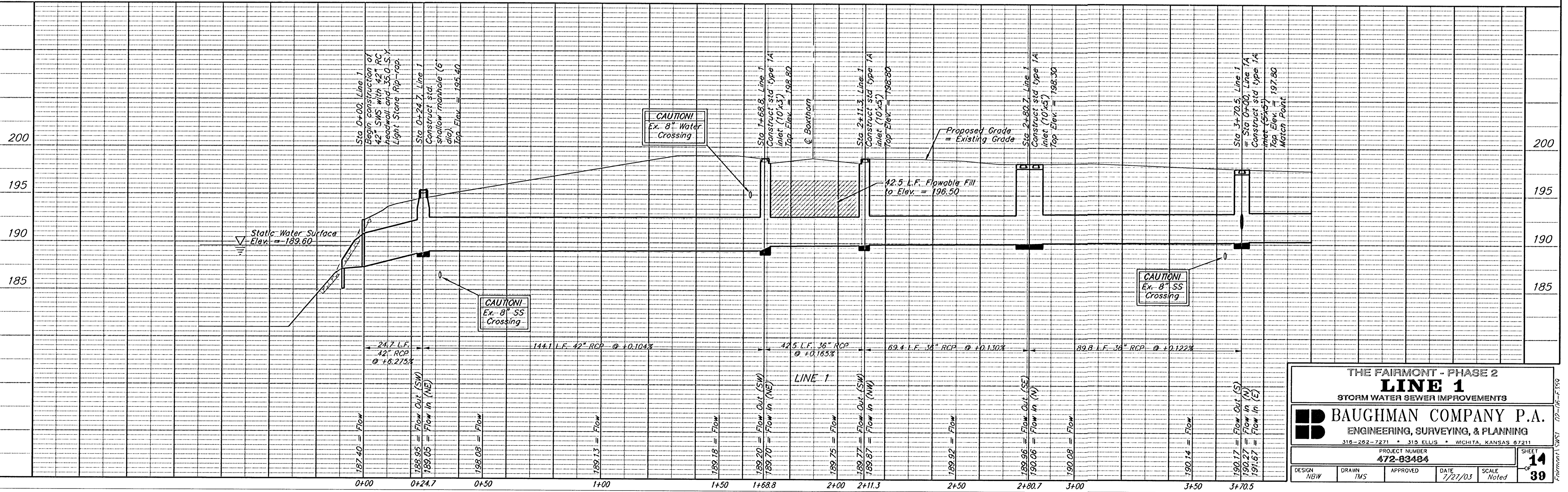
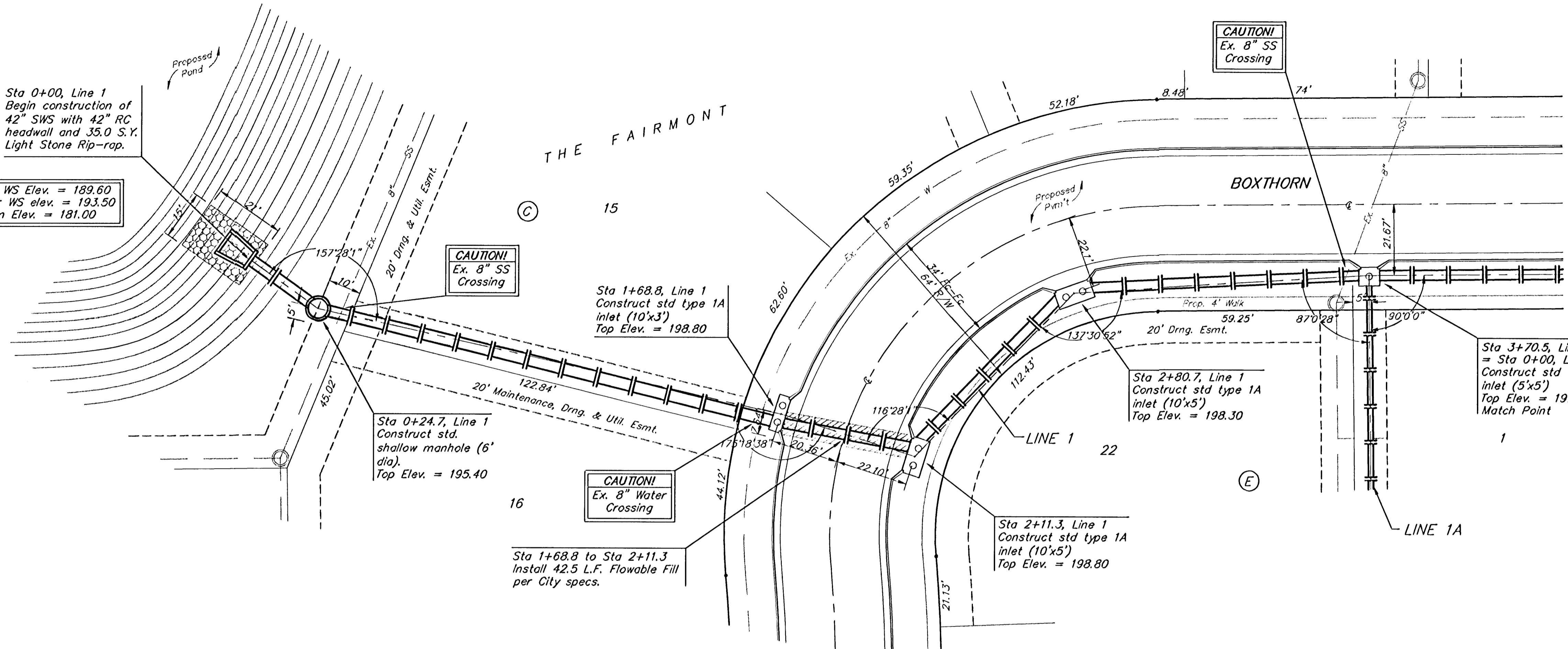
CAUTION!
Ex. 8" Water Crossing

CAUTION!
Ex. 8" Water Crossing

CAUTION!
Ex. 8" SS Crossing

CAUTION!
Ex. 8" SS Crossing

Scale: 1" = 20' Horizontal
1" = 5' Vertical
• = Iron



THE FAIRMONT - PHASE 2
LINE 1
STORM WATER SEWER IMPROVEMENTS

BAUGHMAN COMPANY P.A.
ENGINEERING, SURVEYING, & PLANNING
316-262-7271 • 315 ELLIS • WICHITA, KANSAS 67211

PROJECT NUMBER
472-83484

DESIGN: NGW DRAWN: TMS APPROVED: [Signature] DATE: 7/21/03 SCALE: Noted

SHEET **14** OF **39**