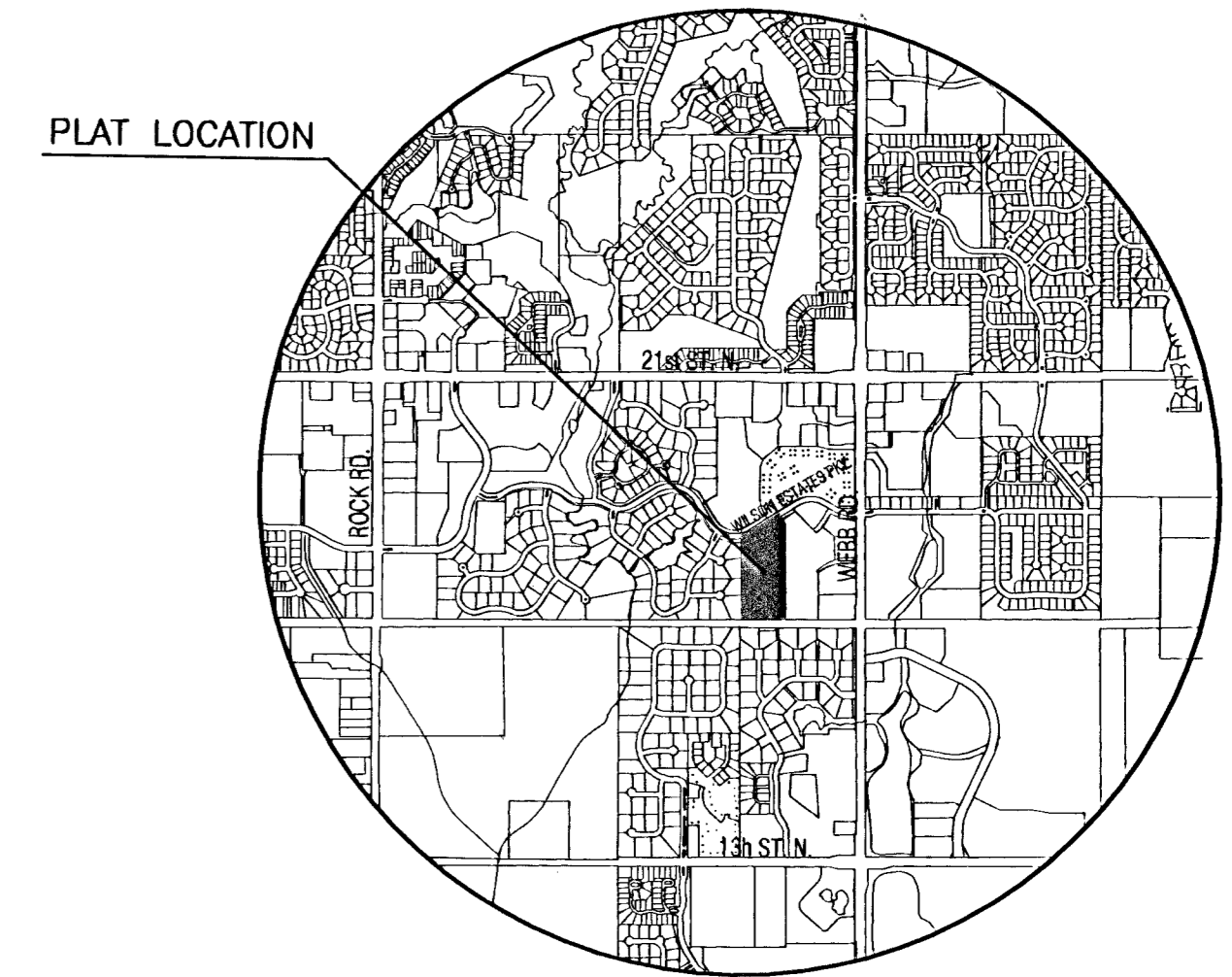


PAVING STREETS AND INCIDENTAL DRAINAGE IN WILSON FARMS FOURTH ADDITION

PROJECT NO. 472-83842

THE CITY OF WICHITA, KANSAS
NEIL D. CABLE, CITY ENGINEER

OCA # 765817



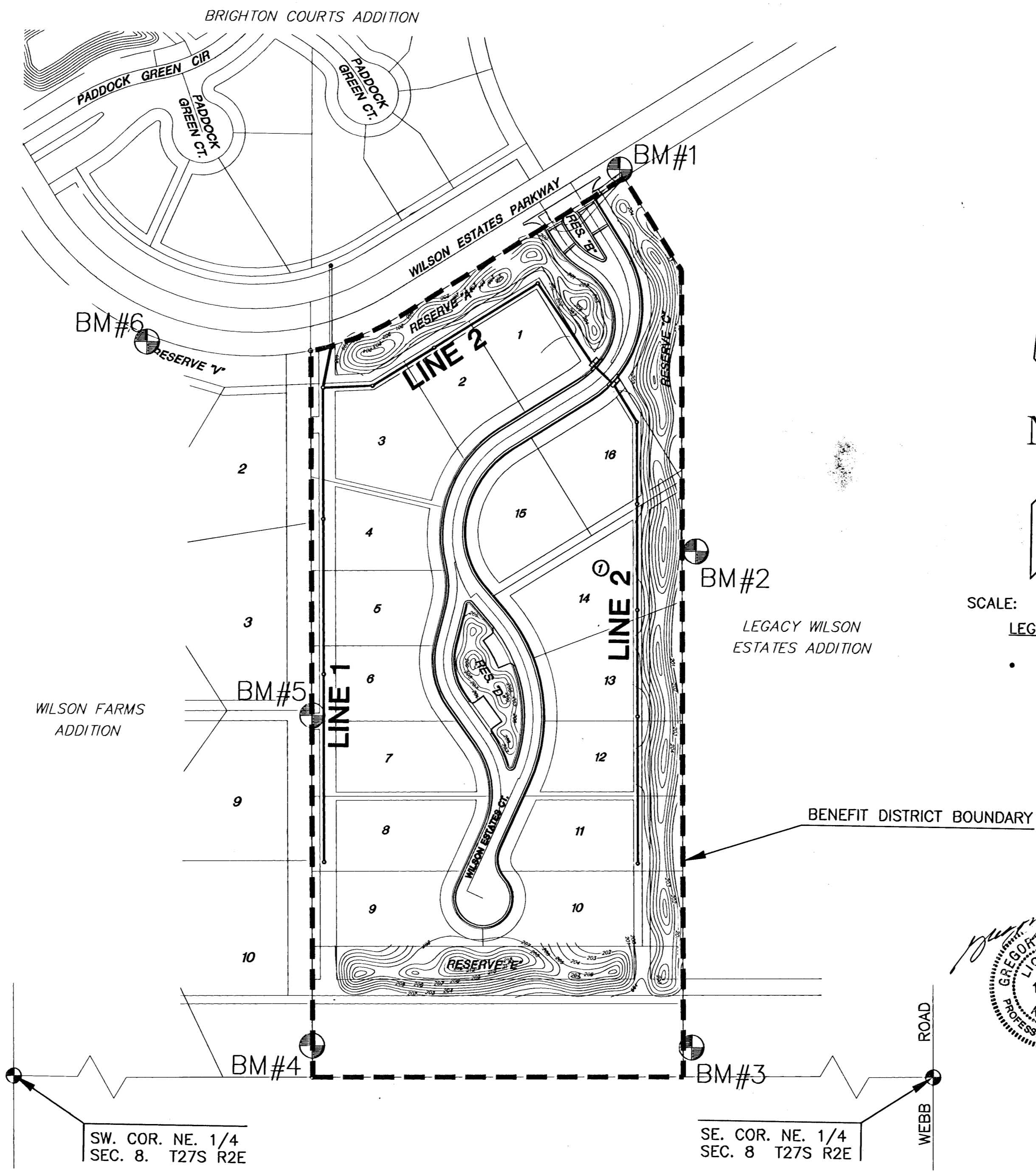
LOCATION MAP

GENERAL NOTES

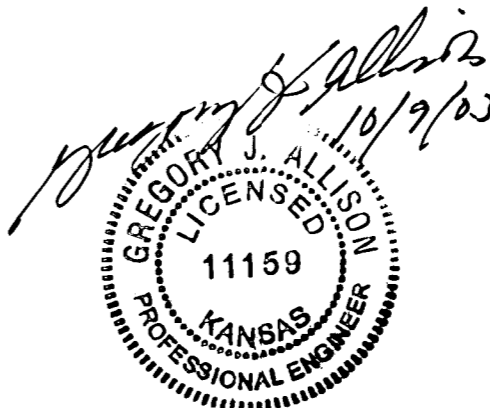
1. UNLESS SHOWN OR STATED OTHERWISE ON THESE DRAWINGS, MATERIALS AND CONSTRUCTION SHALL BE IN ACCORDANCE WITH CITY OF WICHITA CONCRETE PAVEMENT AND ASPHALTIC CONCRETE PAVEMENT SPECIFICATIONS.
2. CONTRACTOR WILL BE REQUIRED TO PROVIDE A MINIMUM ADVANCE NOTICE OF FORTY-EIGHT (48) HOURS TO UTILITY COMPANIES PRIOR TO STARTING ANY EXCAVATION AS FOLLOWS:
KANSAS ONE-CALL 1-800-344-7233
OR 687-2470 (LOCAL WICHITA)
THE CONTRACTOR MUST NOTIFY THE FOLLOWING IN CASE OF AN EMERGENCY:
SBC (TELEPHONE) 800-870-8390
COX COMMUNICATIONS (CABLE) 262-0661
WESTAR (ELECTRIC) 383-8600
KANSAS GAS SERVICE (GAS) 832-3101
CITY OF WICHITA WATER & SEWER MAINT. 262-6000
AQUILA (GAS) 946-0098
3. THE CONTRACTOR SHALL BE RESPONSIBLE FOR PRESERVING PROPERTY IRONS. THE CONTRACTOR WILL BE REQUIRED TO RE-ESTABLISH ANY PROPERTY IRONS WHICH ARE DAMAGED OR DESTROYED BY HIS CONSTRUCTION OPERATIONS. SUCH IRONS SHALL BE RE-ESTABLISHED BY A LICENSED LAND SURVEYOR IN ACCORDANCE WITH STATE LAWS.
4. EXISTING UTILITIES AND THEIR LOCATIONS, AS SHOWN ON THE PLANS REPRESENT THE BEST INFORMATION OBTAINABLE FOR DESIGN. LOCATION INFORMATION HAS BEEN OBTAINED FROM THE VARIOUS UTILITY COMPANIES AND IS EITHER FROM COMPANY RECORD DRAWINGS OR COMPANY PROVIDED FIELD LOCATIONS. THE PLAN LOCATIONS SHOWN ARE NOT GUARANTEED. ADDITIONAL EXISTING UTILITIES MAY ALSO BE ENCOUNTERED.
5. RUBBLE FROM THE REMOVAL OF MISCELLANEOUS STRUCTURES AND EXCESS EXCAVATION WHICH IS TO BE WASTED SHALL BE DISPOSED OF ON SITES TO BE PROVIDED BY THE CONTRACTOR. THESE SITES SHALL BE APPROVED BY THE ENGINEER AS TO SUITABILITY, APPEARANCE AND SITE LOCATION. LOCATIONS THAT, IN THE OPINION OF THE ENGINEER, WILL LEAVE AN UNSIGHTLY APPEARANCE WILL NOT BE APPROVED. ALL DISPOSAL SITES MUST BE APPROVED BY THE KANSAS DEPARTMENT OF HEALTH AND ENVIRONMENT. MATERIAL EITHER STOCKPILED OR DISPOSED OF IN A FLOOD PLAIN WOULD REQUIRE A KANSAS STATE BOARD OF AGRICULTURE PERMIT. ANY MATERIAL DUMPED IN WATERS OF THE UNITED STATES OR WETLANDS IS SUBJECT TO U.S. CORPS OF ENGINEERS PERMITTING REGULATIONS. ANY MATERIAL BURIED OR STOCKPILED BEYOND APPROVED CONSTRUCTION LIMITS WOULD REQUIRE ADDITIONAL ARCHAEOLOGICAL INVESTIGATIONS UNLESS BURIED IN A PREVIOUSLY APPROVED BORROW LOCATION.
6. THIS PROJECT INCLUDES A CERTAIN AMOUNT OF ROLL TYPE CURB CONSTRUCTION. ROLL CURBS SHALL BE DEPRESSED THROUGH ALL DRIVEWAY OPENINGS WHEN SUCH DRIVES ARE CONSTRUCTED AS A PART OF THE PROJECT. NO MORE THAN 2 DRIVES 20 FEET IN WIDTH OR EQUIVALENT COMBINATIONS THEREOF ARE TO BE CONSTRUCTED WITH THIS PROJECT.
7. TRANSITION CURB FROM FULL HEIGHT COMBINATION CURB AND GUTTER TO ROLL TYPE COMBINATION CURB AND GUTTER IS TO BE PAID AS BID FOR LINEAL FEET COMBINED CURB AND GUTTER (3 5/8" ROLL).
8. A SAW CUT OF AT LEAST ONE-HALF THE DEPTH OF THE EXISTING SURFACE COURSES OR ONE-FOURTH THE DEPTH OF THE EXISTING TOTAL PAVEMENT THICKNESS SHALL BE PROVIDED AT LOCATIONS WHERE PROPOSED CONSTRUCTION ABUTS AN EXISTING SURFACE OR PAVEMENT FOR WHICH PARTIAL REMOVAL OF THAT SURFACE OR PAVEMENT IS REQUIRED. SAW JOINT TO FACILITATE REMOVAL WITHIN THREE (3) FEET OF EXISTING JOINTS WILL NOT BE PERMITTED AND FOR SUCH INSTANCES THE LIMITS OF REMOVAL SHALL EXTEND TO THE EXISTING JOINT. SUCH SAW CUTS WILL NOT BE PAID FOR DIRECTLY AND THIS COST SHALL BE CONSIDERED AS SUBSIDIARY TO THE REMOVAL OF SURFACE OR PAVEMENT.
9. CONTRACTOR SHALL SEED AND MULCH ALL DISTURBED AREAS WITH RYE GRASS AT A RATE OF 200 LBS. PER ACRE. GROUND SHALL BE PREPARED IN ACCORDANCE WITH CITY OF WICHITA SPECIFICATIONS.
10. THE FOLLOW TYPES OF PIPE WILL BE ALLOWED FOR THE "SWS PIPE 12": RCP, PVC, OR ADS N-12 WT PIPE AS MANUFACTURED BY ADVANCED DRAINAGE SYSTEM, INC. CONTRACTOR TO SUBMIT MATERIAL SPECIFICATIONS/CERTIFICATIONS TO ENGINEER PRIOR TO CONSTRUCTION.

PROJECT LENGTH 1,005 FT.

EARTHWORK SUMMARY	
EXCAVATION	16200 C.Y.
COMPACTED FILL	13500 C.Y.



SCALE: 1" = 100'
LEGEND
• IRON



INDEX TO DRAWINGS

SHEET NO.	DESCRIPTION
1	TITLE SHEET
2-6	TYP. PAVING SECTIONS
7	WHEELCHAIR RAMP DETAILS
8	SIGNING DETAILS
9-10	PAVING PLANS
11-13	STORM SEWER DETAILS
14-17	STORM SEWER PLANS
18	SITE GRADING PLAN
19	BERM GRADING PLAN
20	EROSION CONTROL
21-25	BMP DETAILS
26-31	CROSS SECTIONS
32	FINAL PLAT

BENCHMARKS

- BM#1 "□" CUT TOP S CURB WILSON ESTATES PARKWAY AT THE NE CORNER OF WILSON FARMS 4TH ADD. ELEV. = 196.505
- BM#2 "□" CUT TOP OF W CURB OF ROAD APPROXIMATELY 33' E OF NE COR. OF LOT 14, BLK 1, WILSON 4TH ELEV. = 199.730
- BM#3 PLASTIC BM IN N FACE OF N LEG OF "H" POLE OF STRUCTURE NEAR SE COR. OF WILSON FARMS 4TH ELEV. = 200.315
- BM#4 R.R. SPIKE IN THE N FACE OF N LEG OF "H" POLE OF STRUCT. NEAR SW COR. OF WILSON FARMS 4TH ELEV. = 200.655
- BM#5 R.R. SPIKE IN THE NE FACE OF 15" HEDGE NEAR THE SW COR. OF LOT 6, BLK 1 WILSON FARMS 4TH ELEV. = 201.530
- BM#6 TOP OF "T" POST ± 7' SOUTH OF THE NW COR. OF RESERVE "V" (NORTH OF LOT 1, BLOCK 9) ELEV. = 192.14

SW. COR. NE. 1/4
SEC. 8. T27S R2E

SE. COR. NE. 1/4
SEC. 8 T27S R2E

WILSON FARMS FOURTH ADDITION
PROJECT NAME

PAVING PLANS
SHEET TITLE

DFL DESIGN BY. DMU DRAWN BY. GJA CHECKED BY.

SEPTEMBER 2003 DATE 03131 JOB NO. 1 / 32 SHEET/OF

H:\CIVIL\96166\03131\DWG\PAVING\03131.DWG