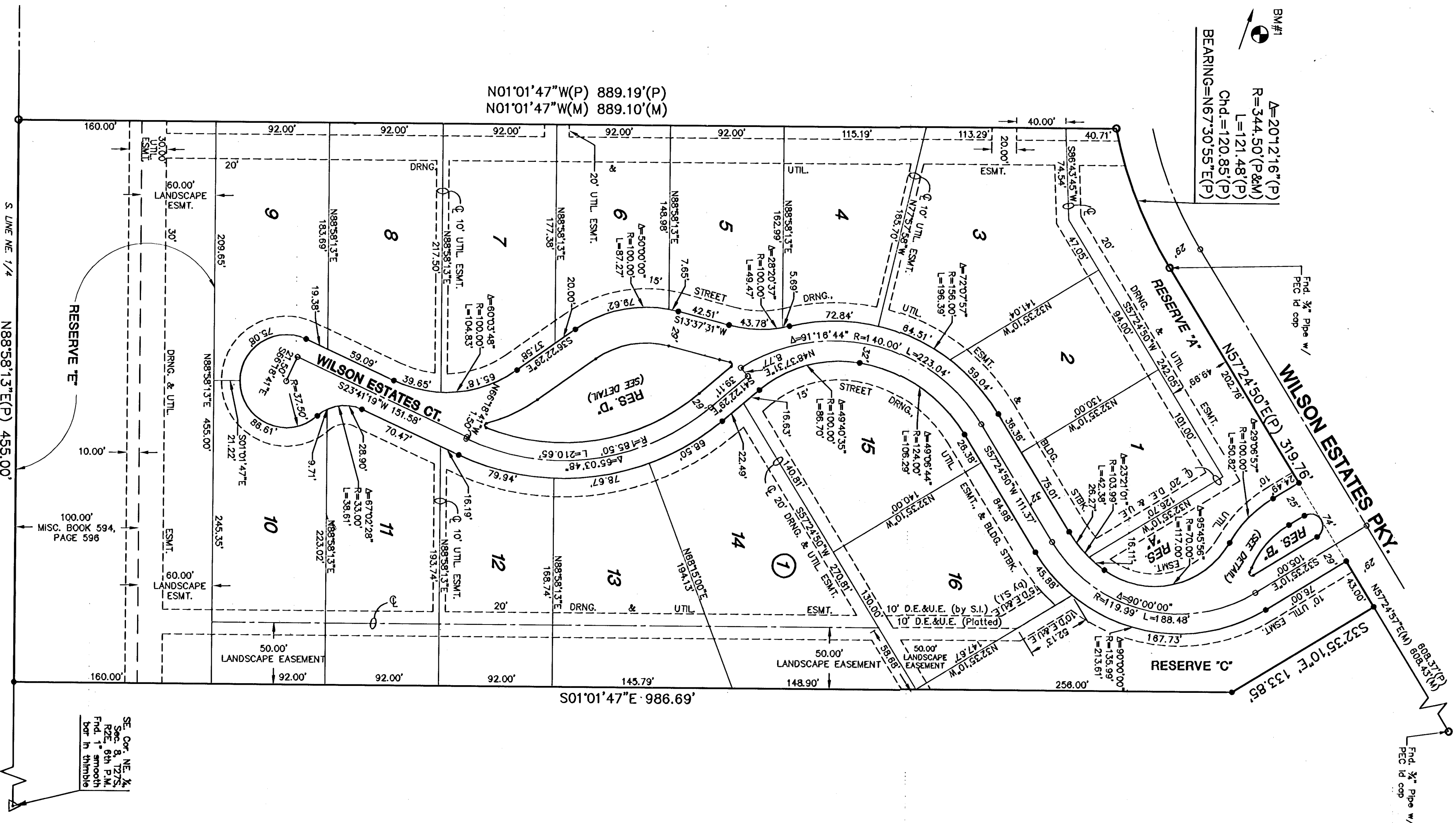


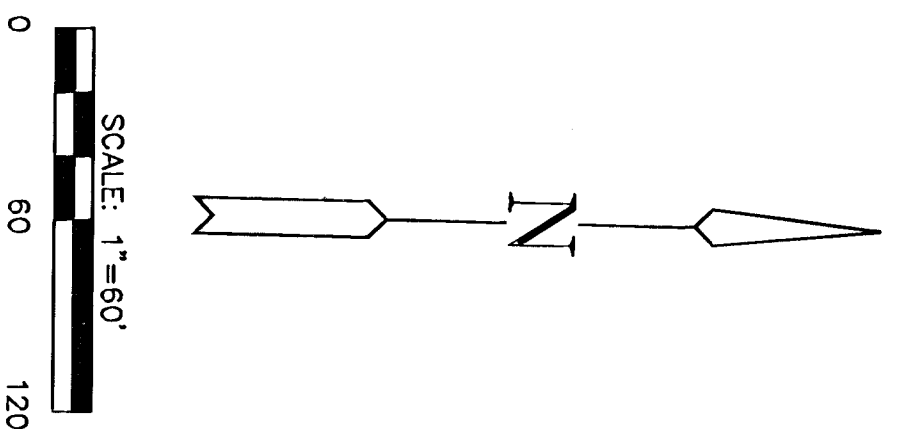
FINAL PLAT

WILSON FARMS FOURTH ADDITION

AN ADDITION TO WICHITA, SEDGWICK COUNTY, KANSAS

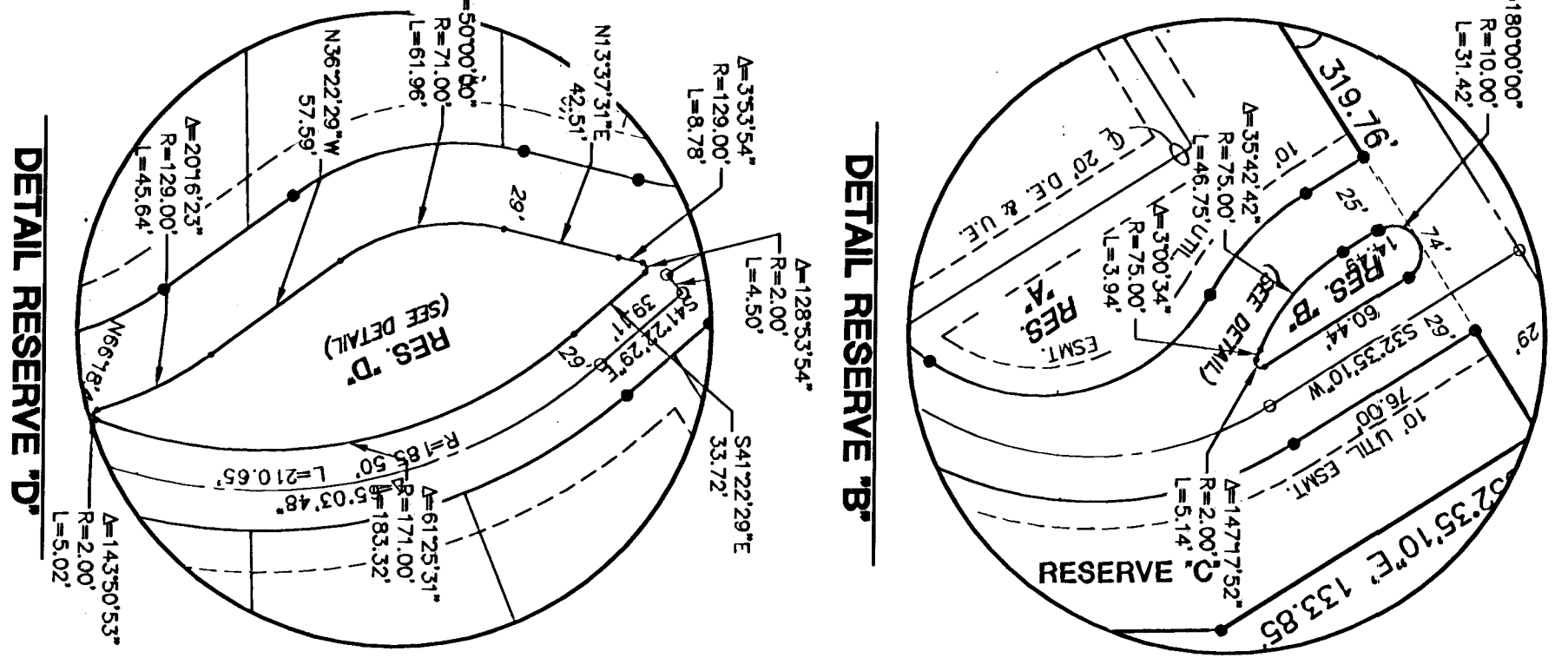


BM#1
 R=344.50 (P&M)
 L=121.48 (P)
 Chd=120.85 (P)
 BEARING=N67°30'55"E (P)



- LEGEND**
- △ = Section Corner Monument Found
 - = Found Survey Monument (see annotated caption for type)
 - = Set 5/8" Rubber W/ MKEC QLS 39 Id. Cap
 - U.E. = Utility Easement
 - D.E. = Drainage Easement
 - (P) = Plotted
 - (M) = Measured

BM#1 - Chiseled square on the South end of the East face of a ROS, 101' South on the East of the Southernmost Forms Third Addition, Wilson Elevation = 189.38 City Datum 1376.78 NGVD



I, Gregory J. Allison, a Registered Land Surveyor in Kansas, do hereby certify that I have been in responsible charge of surveying and plotting of "WILSON FARMS FOURTH ADDITION" an addition to Wichita, Sedgewick County, Kansas, located in Block 2, Reserve "B", of said addition, said tract being more particularly described as follows:

A tract of land lying in a portion of Lot 1, Block 2, Legacy Park, Wilson Estates Addition to Wichita, Sedgewick County, Kansas, TOGETHER WITH, a portion of Reserve "B", of said addition, said tract being more particularly described as follows:

BEGINNING at the Southwest corner of said Lot 1, Block 2, said corner being common with Southeast corner of said Wilson Farms Addition on addition to Wichita, Sedgewick County, Kansas; thence along the common line with said Wilson Farms Addition, and said Legacy Park Wilson Estates Addition, on a plotted bearing of N01°01'47"W, 889.19 feet, to the Northwest corner of said Reserve "B", said corner lying on a curve to the left; thence along said North line and along said curve 121.47 feet; said curve having a central angle of 207°12'16", a radius of 344.50 feet, and a long chord distance of 120.85 feet, bearing N67°30'41"E; thence continuing along said North line N57°24'50"E, 319.76 feet; thence S32°35'10"E, 133.86 feet; thence S01°01'47"E, 986.69 feet to the South line of said addition; thence along said South line S88°58'13"W 455.00 feet to the POINT OF BEGINNING.

Platted easements and building setbacks within the above described property are hereby vacated and replatted by virtue of K.S.A. 12-512(b).

I hereby certify that the details of this plat are correct to the best of my knowledge and belief: this ____ day of _____, 2003.

Gregory J. Allison, P.E., LS #1257
 M&C Engineering Consultants, Inc.
 411 North Kansas
 Wichita, Kansas 67206

Know all men by these presents that we the undersigned property owners of the land above set forth in the Registered Land Surveyor's Certificate, have caused the same to be surveyed and platted into Lots, a Block, Reserves, and a Street, the same to be known as "WILSON FARMS FOURTH ADDITION" an addition to Wichita, Sedgewick County, Kansas. Streets are hereby dedicated to and for the use of the public. Easements for the construction and maintenance of public utilities and drainage, as indicated on the accompanying plat, are hereby granted to the public. Reserves "A", "B", "C", "D", and "E" are platted for irrigation, landscaping, berming, and open space. Reserves "A", "B", "C", and "D" are platted for monuments. Reserves "A", "C", and "E" are platted for utilities in designated areas, as well as, drainage. Reserves "B" is platted for public parking. The Reserves shall be owned and maintained by the homeowner's association; provided, however, that the undersigned, or the homeowners association, as the undersigned's successor in interest, may, in their discretion, deed a parcel of a Reserve to an owner or owners of an adjacent lot, subject to the obligation to maintain such deeded parcel of a Reserve in compliance with the provisions hereof and in compliance with the maintenance covenants of any applicable covenant. A drainage plan has been developed for this plat and all drainage easements, right-of-way, or reserves shall remain of established grades or as modified with the approval of the applicable City or County Engineer; and unobstructed to allow for the conveyance of storm water. This plat shall conform to CUP 45-250.

WILSON RESIDENTIAL COMPANY L.L.C., a Kansas limited liability company

Rob Romesseyer, Manager _____ Manager

STATE OF KANSAS, SEDGWICK COUNTY ss.

This instrument was acknowledged before me on ____ day of _____, 2003, by Bob Romesseyer, Manager, Wilson Residential Company L.L.C., a Kansas limited liability company.

IN WITNESS WHEREOF, I have hereunto set my hand and affixed my official seal, the day and year last above written.

My Term Expires: _____ Notary Public

This plat of "WILSON FARMS FOURTH ADDITION" has been submitted to and approved by the Wichita-Sedgewick County Metropolitan Area Planning Commission, Wichita, Kansas.
 Dated this ____ day of _____, 2003.

WICHITA-SEGDWICK COUNTY METROPOLITAN PLANNING COMMISSION

Bernard A. Hentzen, Chair _____ Chair

John L. Schlegel, Secretary _____ Secretary

This plat approved and all dedications shown thereon, if any, accepted by the City Council of the City of Wichita, Kansas, this ____ day of _____, 2003.

At the direction of the City Council:

Carlas Moyans, Mayor _____ Mayor

Pat Groves, City Clerk _____ City Clerk

Entered on transfer record this ____ day of _____, 2003.

Don Brace, County Clerk _____ County Clerk

STATE OF KANSAS, SEDGWICK COUNTY ss.

This is to certify that this instrument was filed for record in the Register of Deeds office this ____ day of _____, 2003 at ____ o'clock M; and is duly recorded.

Bill Meek, Register of Deeds _____ Register of Deeds

Linda Kizlitz, Deputy _____ Deputy

Reviewed in accordance with K.S.A. 58-2005 on this ____ day of _____, 2003.

Tricia L. Robello, LS #1246 _____ Deputy County Surveyor
 Deputy County Surveyor
 Sedgewick County, Kansas

