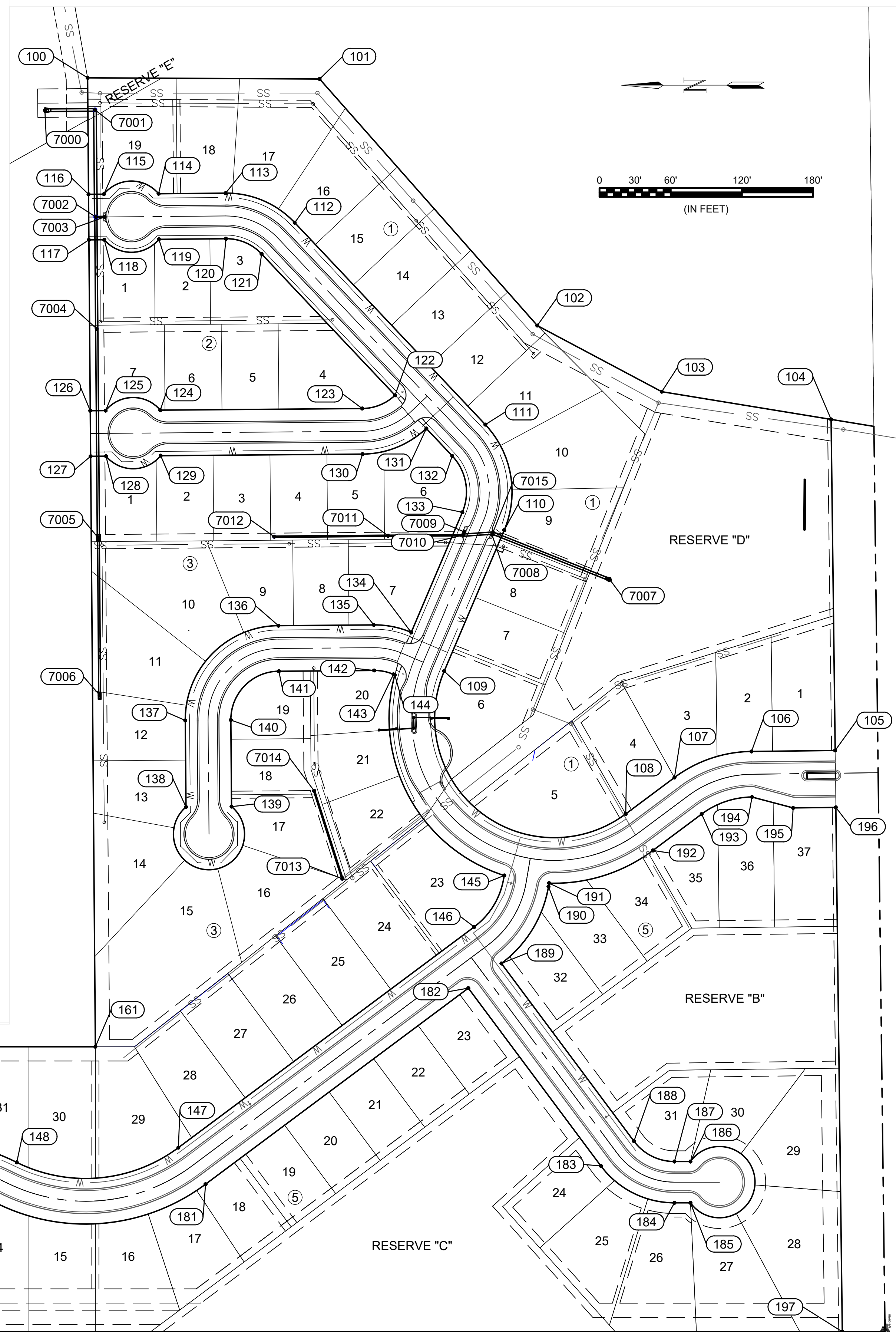


Point Table			
Point #	Northing	Easting	Description
100	18422.18	19121.37	BLK CNR
101	18096.18	19119.67	BLK CNR
102	17790.35	18773.39	BLK CNR
103	17615.47	18680.55	BLK CNR
104	17377.56	18641.59	BLK CNR
105	17371.86	18176.65	BLK CNR
106	17489.42	18175.21	PC
107	17597.66	18138.56	PT
108	17666.15	18087.48	PC
109	17921.16	18287.97	PT
110	17836.81	18486.05	PC
111	17863.33	18634.26	PT
112	18131.21	18917.95	PC
113	18228.24	18959.32	PT
114	18322.45	18958.56	BLK CNR
115	18399.28	18957.94	BLK CNR
116	18420.86	18957.76	BLK CNR
117	18420.35	18893.77	BLK CNR
118	18398.77	18893.94	BLK CNR
119	18321.93	18894.56	BLK CNR
120	18227.73	18895.32	PC
121	18177.74	18874.01	PT
122	17990.21	18675.41	BLK CNR
123	18036.35	18656.85	PT
124	18320.00	18654.57	BLK CNR
125	18396.83	18653.95	BLK CNR
126	18418.41	18653.77	BLK CNR
127	18417.90	18589.78	BLK CNR
128	18396.32	18589.95	BLK CNR
129	18319.48	18590.57	BLK CNR
130	18035.83	18592.85	PC
131	17946.27	18628.87	BLK CNR
132	17909.86	18590.32	PC
133	17895.69	18511.13	PT
134	17967.50	18342.49	BLK CNR
135	18020.13	18352.97	PT
136	18153.98	18351.89	PC
137	18284.91	18218.84	PT
138	18283.93	18097.24	BLK CNR
139	18219.93	18097.75	BLK CNR

Point Table			
Point #	Northing	Easting	Description
140	18220.91	18219.35	PC
141	18153.46	18287.90	PT
142	18019.62	18288.97	PC
143	17992.43	18283.54	PT
144	17990.54	18282.74	BLK CNR
145	17836.83	18001.04	BLK CNR
146	17878.98	17928.76	PT
147	18294.70	17618.73	PC
148	18521.69	17598.09	PCC
149	18668.83	17632.51	PT
150	18768.83	17632.53	PC
151	18931.68	17607.03	PCC
152	19074.94	17584.60	PT
153	19274.94	17584.64	PC
154	19432.00	17611.82	PCC
155	19610.54	17642.72	PT
156	19710.54	17642.74	PC
157	19760.13	17633.08	BLK CNR
158	19765.49	17640.43	PC
159	19778.53	17680.49	PT
160	19778.52	17760.75	BLK CNR
161	18411.22	17760.45	BLK CNR
162	19842.52	17760.77	BLK CNR
163	19981.97	17760.80	BLK CNR
164	19978.75	17360.80	BLK CNR
165	19842.60	17360.77	BLK CNR
166	19842.57	17510.77	PC
167	19811.86	17595.39	BLK CNR
168	19817.21	17602.73	PC
169	19842.53	17680.51	PT
170	19778.60	17360.75	BLK CNR
171	19778.57	17510.75	PC
172	19710.56	17578.74	PT
173	19610.56	17578.72	PC
174	19453.49	17551.54	PCC
175	19274.96	17520.64	PT
176	19074.96	17520.60	PC
177	18912.11	17546.10	PCC
178	18768.85	17568.53	PT
179	18668.85	17568.51	PC

Point Table			
Point #	Northing	Easting	Description
180	18550.07	17540.72	PCC
181	18256.44	17567.43	PT
182	17887.21	17842.78	BLK CNR
183	17701.06	17593.16	PC
184	17597.67	17541.28	PT
185	17575.19	17541.27	BLK CNR
186	17575.17	17599.27	BLK CNR
187	17597.66	17599.28	PC
188	17654.56	17627.83	PT
189	17840.72	17877.45	BLK CNR
190	17774.57	17985.45	PT
191	17773.74	17990.26	BLK CNR
192	17627.89	18036.17	PT
193	17559.40	18087.25	PC
194	17488.64	18111.21	BLK CNR
195	17430.88	18095.92	BLK CNR
196	17370.88	18096.65	BLK CNR
197	17361.86	17360.23	BLK CNR
7000	18482.17	19075.75	SWS1 0+00 END SECTION
7001	18411.82	19076.31	SWS1 BACKYARD INLET
7002	18410.61	18925.85	SWS1 MANHOLE
7003	18398.22	18925.95	SWS1A TYPE 1A INLET
7004	18409.34	18768.85	SWS1 BACKYARD INLET
7005	18406.97	18474.86	SWS1 4x6 INLET
7006	18405.20	18254.32	SWS 3x6 INLET
7007	17688.43	18416.45	SWS2 0+00 END SECTION
7008	17853.99	18479.73	SWS2 TYPE 1A INLET
7009	17892.93	18483.58	SWS2 TYPE 1A INLET
7010	17894.88	18478.98	SWS2 PIPE CL
7011	17999.99	18478.14	SWS2 BACKYARD INLET
7012	18159.98	18476.85	SWS2 BACKYARD INLET
7013	18064.27	17996.52	SWS3 0+00 CONNECT
7014	18103.91	18120.06	SWS3 BACKYARD INLET
7015	17853.07	18481.90	SWS2 PIPE CL



GARVER

© 2018 GARVER, LLC
 THIS DOCUMENT, ALONG WITH THE IDEAS AND DESIGNS CONVEYED HEREIN, SHALL BE CONSIDERED INSTRUMENTS OF PROFESSIONAL SERVICE AND ARE PROPERTY OF GARVER, LLC. ANY USE, REPRODUCTION, OR DISTRIBUTION OF THIS DOCUMENT, ALONG WITH THE IDEAS AND DESIGN CONTAINED HEREIN, IS PROHIBITED UNLESS AUTHORIZED IN WRITING BY GARVER, LLC OR EXPLICITLY ALLOWED IN THE GOVERNING PROFESSIONAL SERVICES AGREEMENT FOR THIS WORK.

MARK T. DOLECHEK
 LICENSED PROFESSIONAL ENGINEER
 KANSAS
 25299

Digitally Signed 11/29/2018

REV.	DATE	DESCRIPTION	BY

CITY OF WICHITA
 WICHITA, KANSAS

SIERRA HILLS 2nd ADD.
 PHASE 4 - SS

Bubble Map

JOB NO.: 18267013
 DATE: NOV 2018
 DESIGNED BY: .
 DRAWN BY: .

BAR IS ONE INCH ON ORIGINAL DRAWING
 0 30' 60' 120' 180'
 IF NOT ONE INCH ON THIS SHEET, ADJUST SCALES ACCORDINGLY.

DRAWING NUMBER

SHEET NUMBER **18** OF **19**

File: L:\2018\18267013 - Sierra Hills 2nd Phase 4 Drawings\CADD\SWS\SWS Bubble Map.dwg, Last Save: 11/29/2018 7:49 AM, Last saved by: MTDolechek
 Last plotted by: Dolechek, Mark T., Plot Style: ---, Plot Scale: 1:2,5649, Plot Date: 11/29/2018 8:00 AM, Plotter used: None