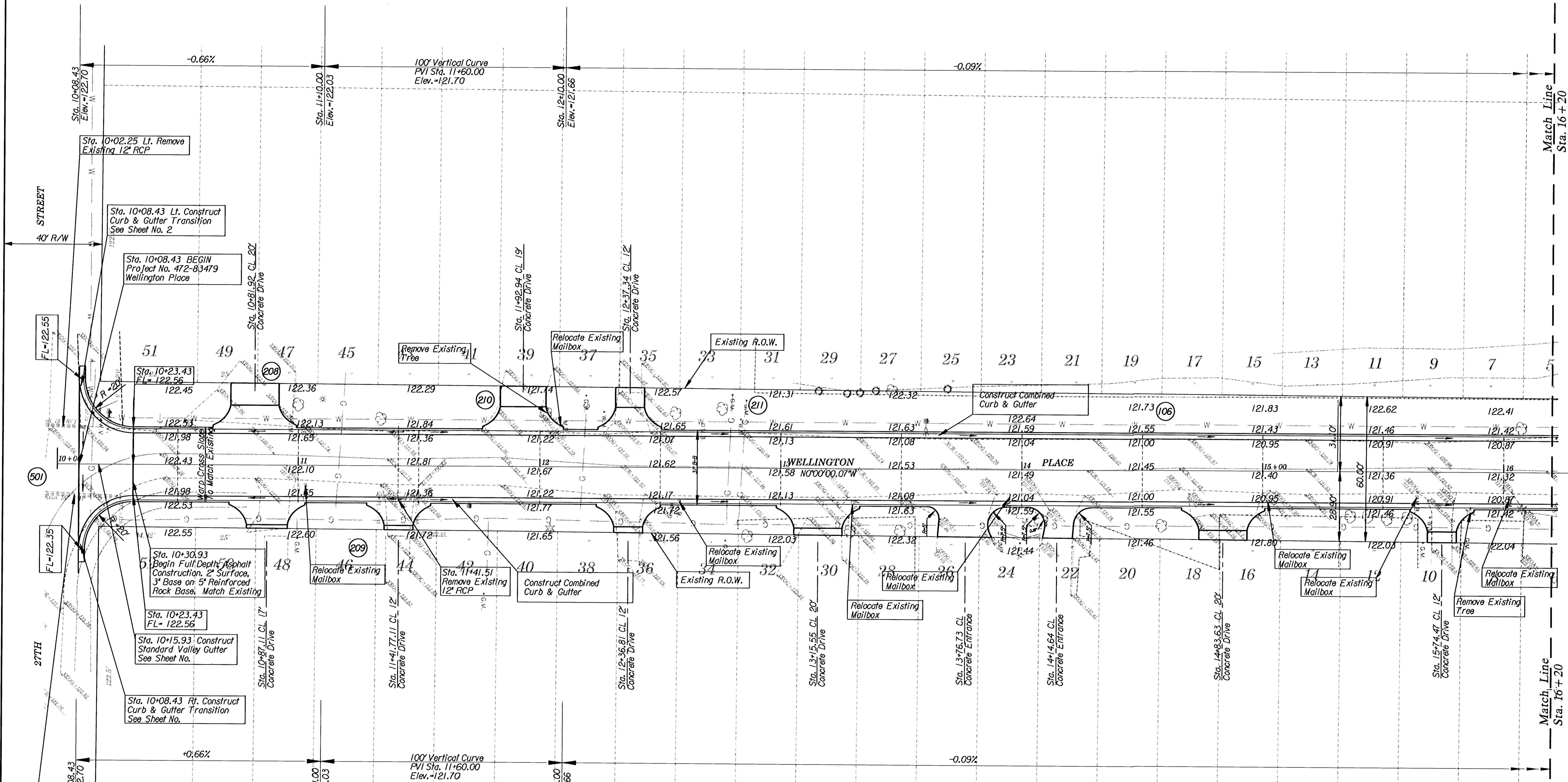


SCALE
1" = 20'



Sta. 10+07.16 Rt. Remove Existing 15' CMP

BM No. 3- Railroad Spike in East Side Power Pole Northwest Corner of 27th Street & Wellington
Elev = 123.93

CITY OF WICHITA			
WELLINGTON PLACE 27TH ST. TO 29TH ST.)			
PROPOSED IMPROVEMENTS Sta. 10+00 To Sta. 16+20			
PROJECT NO. 250000701	DESIGNED J.R.L.	DRAWN M.P.M.	
DATE	CHECKED B.A.L.	DATE 2/20/03	
	SCALE 1"=20'	SHEET NO. 8	OF 28

WICHITA KANSAS
TRANSYSTEMS
CORPORATION
245 North Wood, Suite 420
Wichita, Kansas 67202