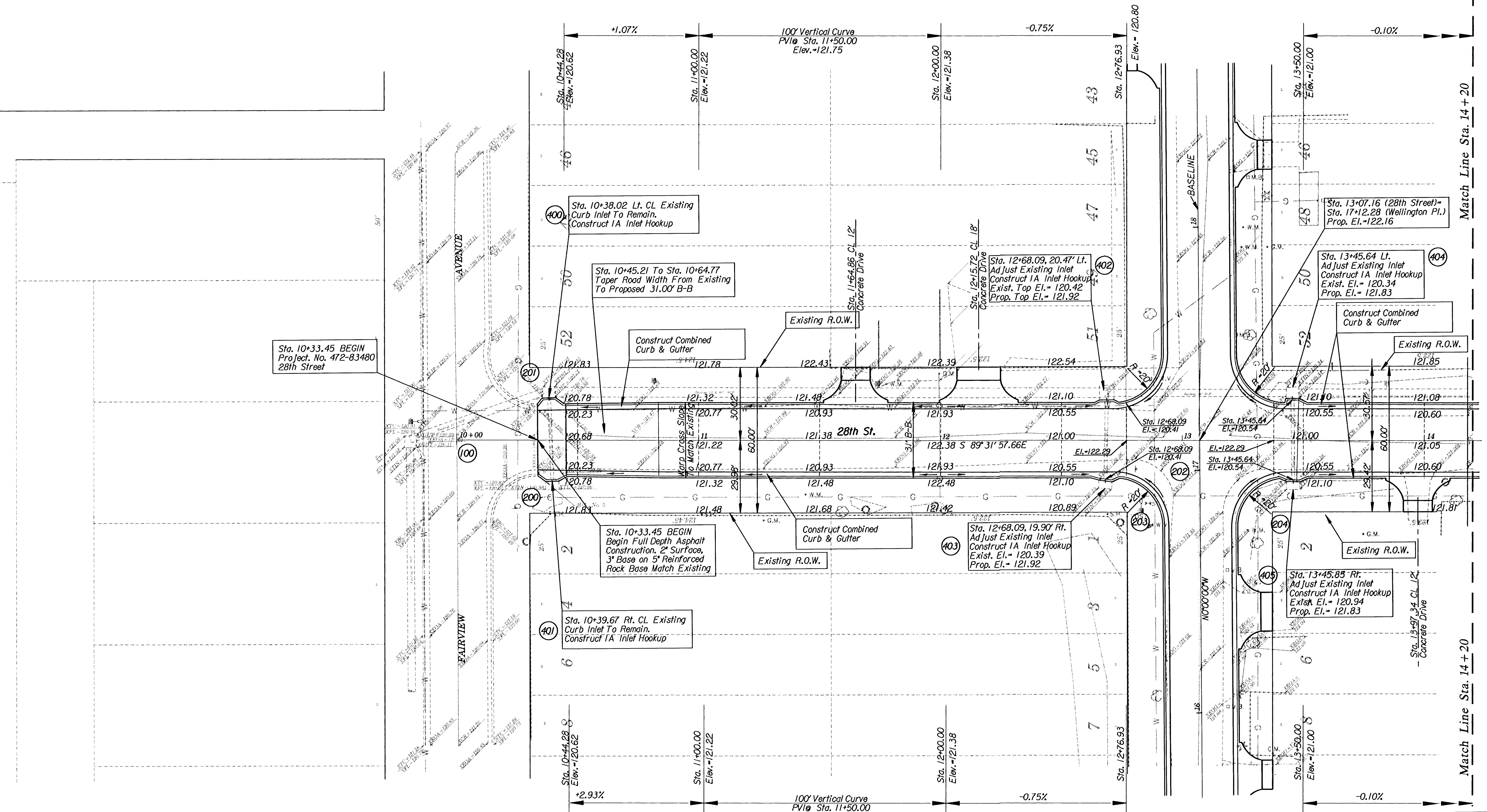


SCALE
1" = 20'



Sta. 10+33.45 BEGIN
Project No. 472-83480
28th Street

Sta. 10+38.02 Lt. CL Existing
Curb Inlet To Remain.
Construct IA Inlet Hookup

Sta. 10+45.21 To Sta. 10+64.77
Taper Road Width From Existing
To Proposed 31.00' B-B

Construct Combined
Curb & Gutter

Existing R.O.W.

Sta. 12+68.09, 20.47' Lt.
Ad Just Existing Inlet
Construct IA Inlet Hookup
Exist. Top El. = 120.42
Prop. Top El. = 121.92

Sta. 13+07.16 (28th Street) =
Sta. 17+12.28 (Wellington Pl.)
Prop. El. = 122.16

Sta. 13+45.64 Lt.
Ad Just Existing Inlet
Construct IA Inlet Hookup
Exist. El. = 120.34
Prop. El. = 121.83

Construct Combined
Curb & Gutter

Existing R.O.W.

Sta. 10+33.45 BEGIN
Full Depth Asphalt
Construction, 2" Surface,
3" Base on 5" Reinforced
Rock Base Match Existing

Construct Combined
Curb & Gutter

Sta. 12+68.09, 19.90' Rt.
Ad Just Existing Inlet
Construct IA Inlet Hookup
Exist. El. = 120.39
Prop. El. = 121.92

Sta. 13+45.85 Rt.
Ad Just Existing Inlet
Construct IA Inlet Hookup
Exist. El. = 120.94
Prop. El. = 121.83

Sta. 10+39.67 Rt. CL Existing
Curb Inlet To Remain.
Construct IA Inlet Hookup

Sta. 13+45.85 Rt. CL 12'
Concrete Drive

BM No. 5 - Square Cut in Northwest
Corner Inlet at Southeast Corner of
28th Street & Fairview
Elev. = 119.99

| Water Valve Box Table | | | |
|-----------------------|-----------|----------|----------|
| Station | Offset | Existing | Proposed |
| 12+85.34 | 26.00 Rt. | 119.97 | 122.40 |
| 12+86.80 | 34.87 Rt. | 120.83 | 122.40 |
| 12+88.24 | 25.44 Lt. | 122.26 | 122.40 |

CITY OF WICHITA
28th Street
(Fairview Ave. To Park Place)

PROPOSED IMPROVEMENTS
Sta. 10+00 To Sta. 14+20

WICHITA KANSAS

DESIGNED: J.R.L. DRAWN: M.P.M.
CHECKED: B.A.L. DATE: 2/2003
SCALE: 1" = 20' SHEET NO. 9 of 28

TRANSYSTEMS CORPORATION
245 North Waco, Suite 420
Wichita, Kansas 67202

Match Line Sta. 14 + 20