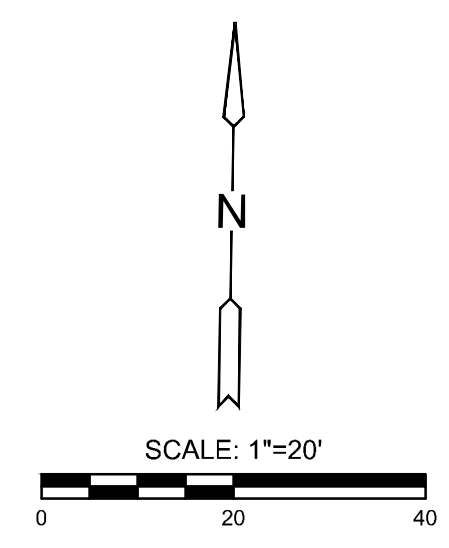
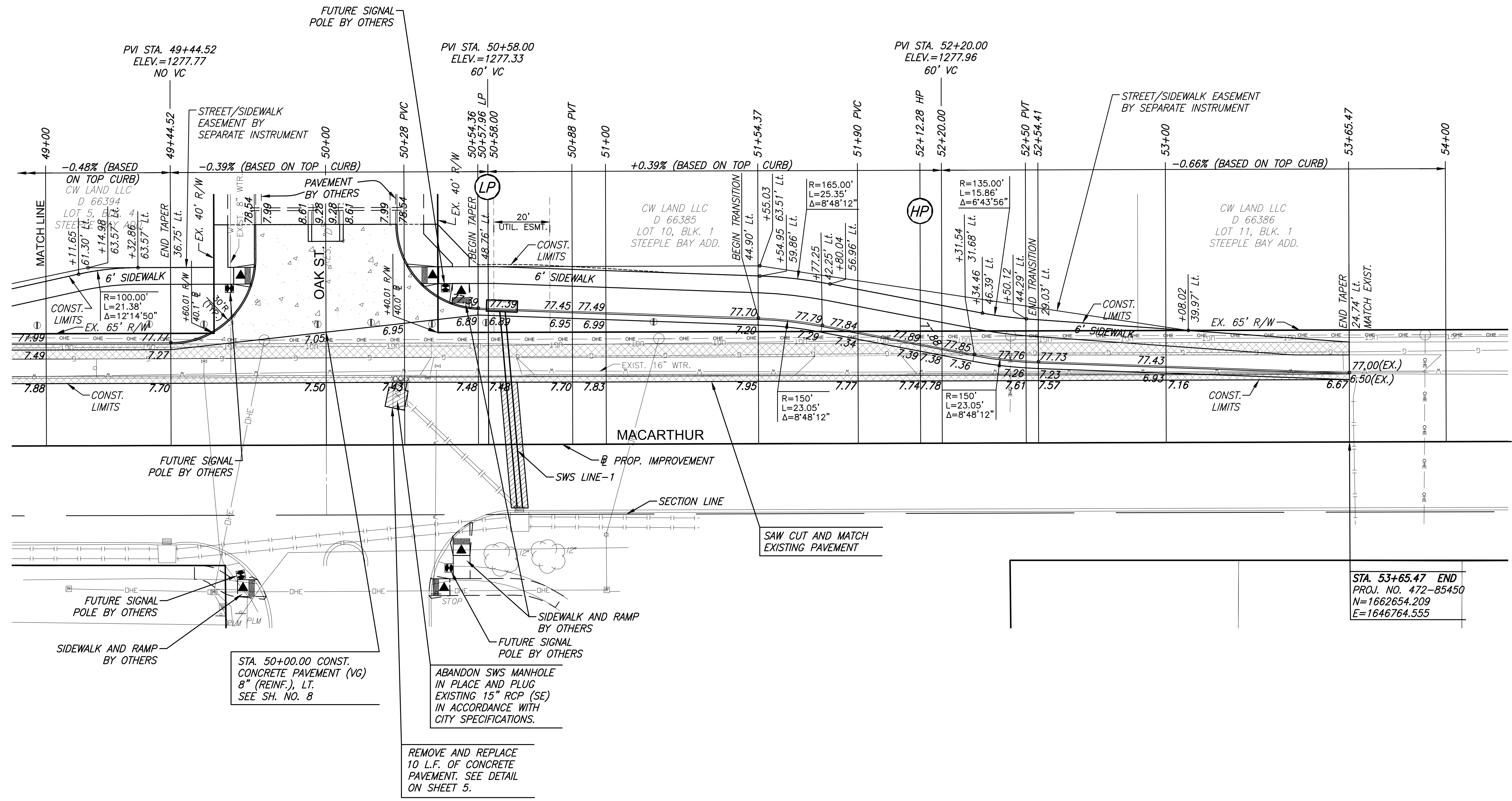


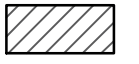



J:\PROJECTS\2017\170101043_LANGE_STEEPLE_BAY_1743_CADD\SHOTS\05_CIVIL\MACARTHUR_STREET IMPROVEMENTS\1743_MACARTHUR_EP01.DWG
 PLOTTED: Friday, December 28, 2018 @ 11:46AM



MACARTHUR ROAD IMPROVEMENTS FOR
STEEPLE BAY ADDITION
 WICHITA, KANSAS



LEGEND

	Pavement Removal and Replace
	Pavement Removal
	Construct Wheelchair Ramp See Sh. No. 10
	Storm Sewer Removal

©2018 MKEC Engineering All Rights Reserved www.mkec.com
 These drawings and their contents, including, but not limited to, all concepts, designs, & ideas are the exclusive property of MKEC Engineering (MKEC), and may not be used or reproduced in any way without the express consent of MKEC.

PAVING PLANS
 STA. 49+50.00 TO STA. 53+65.47

PROJECT NO.	472-85450
DATE	1/02/19
SCALE	1"=20'
DESIGNED	JRA
DRAWN	WNJ
CHECKED	JRA

NO.	REVISION	DATE