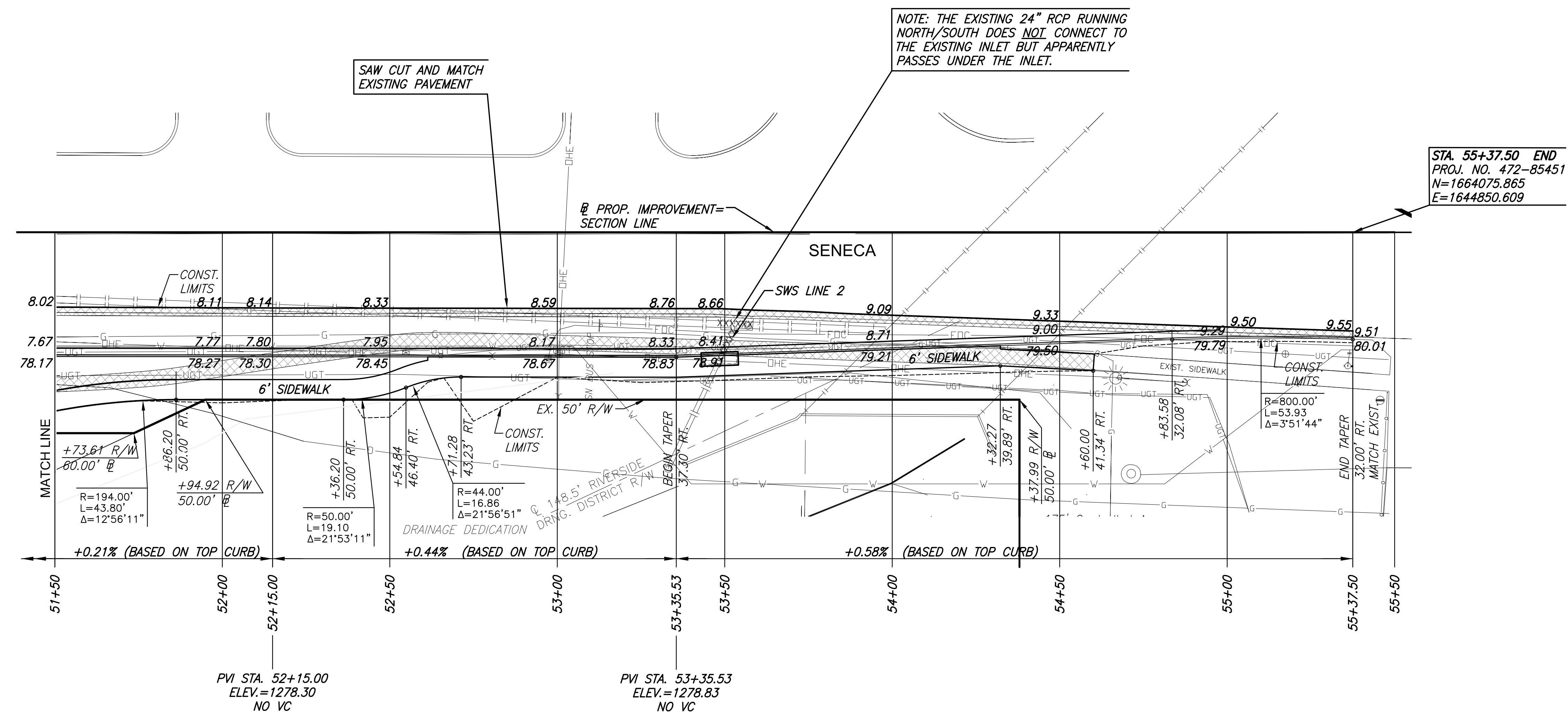
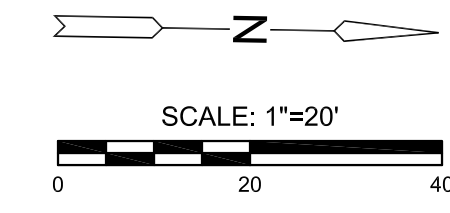


J:\PROJECTS\2017\1701010143\_LANES\_STEEPLE BAY\_17143\_CADD\SHOTS\06 CIVIL\SENECA STREET IMPROVEMENTS\17143\_SENECA\_EP01.DWG  
 PLOTTED: Friday, December 28, 2018 @ 10:17AM



SENECA STREET IMPROVEMENTS FOR  
**STEEPLE BAY ADDITION**  
 WICHITA, KANSAS




©2018 MKEC Engineering All Rights Reserved www.mkec.com  
 These drawings and their contents, including, but not limited to, all concepts, designs, & ideas are the exclusive property of MKEC Engineering (MKEC), and may not be used or reproduced in any way without the express consent of MKEC.

**PAVING PLANS**  
 STA. 51+50.00 TO  
 STA. 55+10.54

PROJECT NO.	472-85451
DATE	1/02/19
SCALE	1"=20'

DESIGNED	DRAWN	CHECKED
JRA	WNJ	JRA

**LEGEND**

-  Pavement Removal
-  Construct Wheelchair Ramp See Sh. No. 10
-  Storm Sewer Removal

NO.	REVISION	DATE