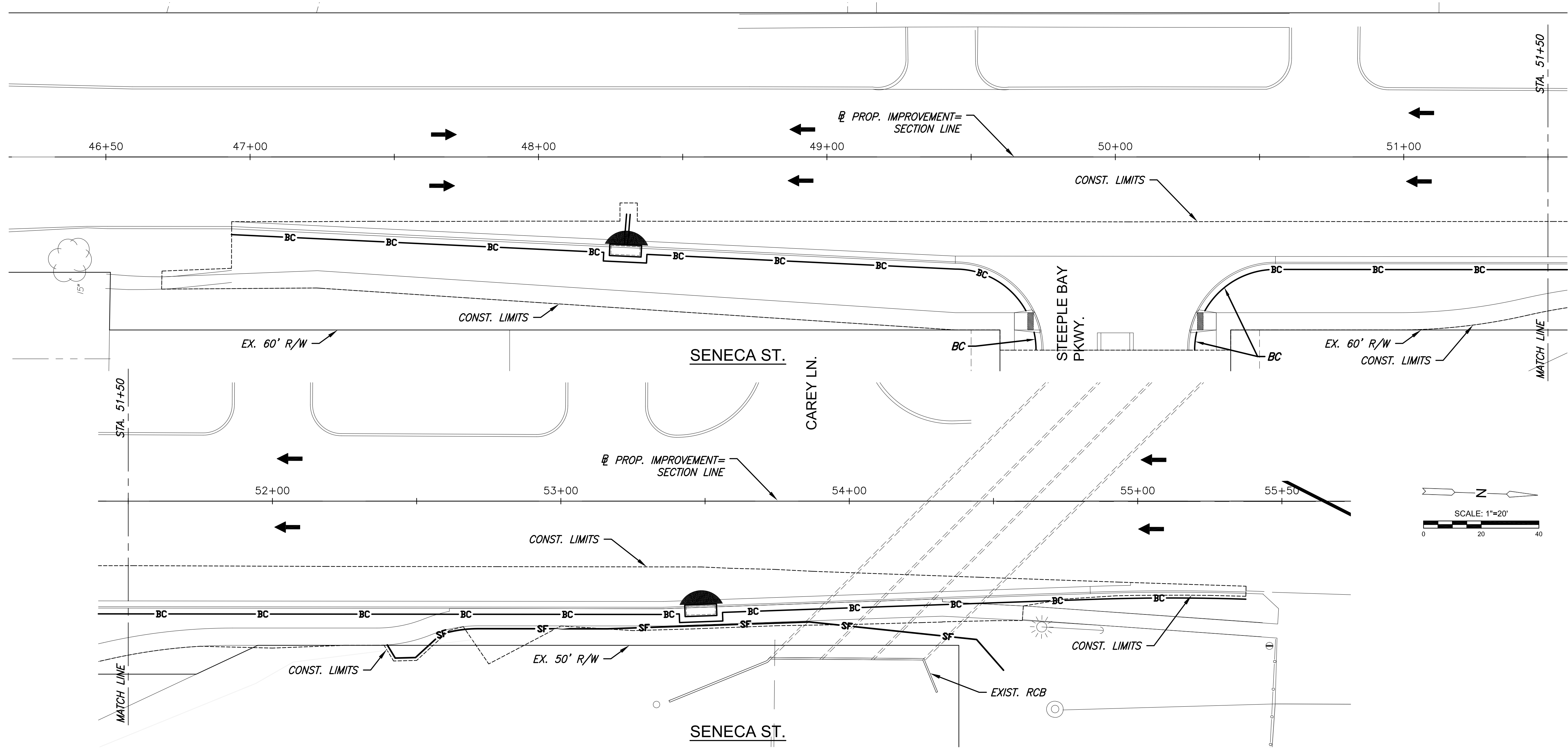


J:\PROJECTS\2017\17010143_LANES_STEEPLE_BAY_1743_CADD\SHOTS\05_CIVIL\SENECA_STREET_IMPROVEMENTS\1743_SENECA_FP01.DWG
 PLOTTED: Friday, December 28, 2018 @ 10:14AM

SENECA STREET IMPROVEMENTS FOR
STEEPLE BAY ADDITION
 WICHITA, KANSAS


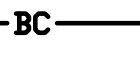
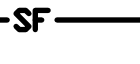


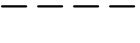


EROSION CONTROL/SEEDING NOTES

1. ALL AREAS SHALL BE FINE GRADED AND SURFACE SHALL BE FREE FROM STICKS, SMALL STONES, AND OTHER EXTRANEEOUS MATERIALS.
2. SEEDING AREAS SHALL BE PREPARED FOR PLANTING WITH COMMON AGRICULTURAL TECHNIQUES. APPROVE WITH OWNER'S REPRESENTATIVE BEFORE PLANTING.
3. ALL SEED SHALL BE DISTRIBUTED WITH AN ACCEPTABLE DRILL INTENDED FOR SUCH OPERATIONS, OR OTHER EQUIPMENT APPROVED BY THE OWNER'S REPRESENTATIVE. SEEDING DEPTH SHALL BE 1/4 OF AN INCH.
4. ALL SEEDED AREAS SHALL BE IMMEDIATELY MULCHED WITH PRAIRIE HAY AT 2 TONS/ACRE. ANCHOR MULCH BY CRIMPING INTO TOPSOIL WITH SUITABLE MECHANICAL EQUIPMENT, UNLESS OTHERWISE NOTED.
5. CONTRACTOR IS RESPONSIBLE FOR MAINTAINING AND IMPLEMENTING ALL EROSION CONTROL.
6. IN ORDER TO PREVENT SILT OR SEDIMENT FROM ENTERING ADJACENT PROPERTIES, APPROPRIATE BMP'S SHALL BE IMPLEMENTED WITHIN THE PROJECT.
7. ANY MUD TRACKED ONTO ADJACENT PAVED AREAS OR STREETS SHALL BE REMOVED AT THE END OF EACH WORK DAY.
8. PER THE REQUIREMENTS OF THE NOI/SWPPP, BMP INSPECTION REPORTS SHALL BE COMPLETED BY THE CONTRACTOR WEEKLY AND WITHIN 24 HOURS AFTER A 1/2" RAIN. REPORTS SHALL BE KEPT WITH THE SWPPP ON SITE.
9. CONTRACTOR SHALL PROVIDE A SIGN NEAR THE ENTRANCE WITH THE FOLLOWING INFORMATION:
 - A. CONTACT NAME AND INFORMATION
 - B. A COPY OF THE NOI
 - C. LOCATION OF SWPPP
10. THIS PROJECT WILL NOT DISTURB MORE THAN 0.6 ACRES.
11. REFER TO CITY OF WICHITA STANDARDS FOR BMP INSTALLATION, INSPECTION, AND MAINTENANCE DETAILS AND SPECIFICATIONS.
12. COST FOR EACH EROSION AND SEDIMENT CONTROL ITEM SHALL INCLUDE MAINTENANCE, INSPECTION, AND EVENTUAL REMOVAL. BESIDES KEEPING EACH DEVICE IN WORKING ORDER, MAINTENANCE SHALL INCLUDE, AT A MINIMUM, SEDIMENT REMOVAL BEFORE 50% OF THE DEVICE'S CAPACITY IS REACHED.
13. CONTRACTOR SHALL ADJUST EROSION AND SEDIMENT CONTROL PLANS TO CONFORM TO ACTUAL CONSTRUCTION OPERATIONS. ALL CHANGES TO PLAN SHALL BE APPROVED BY THE CITY.
14. STABILIZED ENTRANCES SHALL BE PROVIDED AS DIRECTED BY THE CITY. 1 TOTAL ENTRANCES ARE ANTICIPATED ON THE PROJECT.
15. STOCKPILING OF EXCAVATED MATERIAL ON THE PROJECT SITE IS GENERALLY PROHIBITED. SMALL AND INTERIM STOCK PILES NOT IMMEDIATELY HAULED OFF-SITE SHOULD BE ENCLOSED AND PROTECTED WITH SILT BARRIER AROUND THE ENTIRE CIRCUMFERENCE OF THE STOCK PILE. INSTALLING AND MAINTAINING THIS FENCE SHALL BE CONSIDERED SUBSIDIARY TO THE BID ITEM "BMP, SILT FENCE".
16. EROSION CONTROL DEVICES WILL NEED TO BE INSTALLED AS APPLICABLE FOR THE APPROPRIATE CONSTRUCTION PHASE, CONTRACTOR SHALL ADJUST EROSION AND SEDIMENT CONTROL PLAN TO CONFORM TO ACTUAL CONSTRUCTION OPERATIONS. ONCE INSTALLED, THE DEVICES SHALL REMAIN IN-PLACE AND CONTINUE TO BE MAINTAINED UNTIL NO LONGER NECESSARY AS DETERMINED BY THE CITY.
17. THE CONTRACTOR SHALL RESEED ALL UNDEVELOPED AREAS DISTURBED BY CONSTRUCTION WITH A MIXTURE OF RYEGRASS (APPLIED AT A RATE OF 200 LBS. PER ACRE) AND BUFFALO GRASS, DEPENDING ON THE SOIL CONDITIONS (APPLIED PER STANDARD SPECIFICATIONS). PURE NITROGEN FERTILIZER SHALL ALSO BE APPLIED AT A RATE OF 1.5 LBS. PER THOUSAND SQUARE FEET. THE SEED SHALL BE WATERED WITH A DEEP SOAKING EVERY TWO (2) WEEKS DURING DRY PERIODS UNTIL A MATURE STAND OF GRASS IS OBTAINED. THE "RECAPITULATION OF QUANTITIES" SHOWS THE ESTIMATED SQUARE YARDS OF DISTURBED AREA TO BE SEEDED, WITH A BID ITEM FOR THE SAME. THE PERMANENT SEEDING MAY BE OMITTED ONLY IF SODDING IS REQUIRED. THE CONTRACTOR SHALL BE RESPONSIBLE FOR INSTALLING EROSION CONTROL BLANKET (CURLX I, OR APPROVED EQUAL) AT THE BACK OF CURB, TO AND INCLUDING THE LIMITS OF ALL SEEDED AREAS. ALL COSTS FOR THIS WORK SHALL BE SUBSIDIARY TO THE SEEDING BID ITEMS.

EROSION CONTROL BMP SUMMARY		
ITEMS	QUANTITY	UNIT
BMP, Back of Curb Protection	818	L.F.
BMP, Curb Inlet Protection	2	Each
BMP, Silt Fence	225	L.F.
BMP, Construction Entrance	1	Each

LEGEND

	FLOW ARROW
	BACK OF CURB PROTECTION
	SILT FENCE
	CURB INLET PROTECTION
	DROP INLET PROTECTION
	CONST. LIMITS

©2018 MKEC Engineering All Rights Reserved www.mkec.com
 These drawings and their contents, including, but not limited to, all concepts, designs, & ideas are the exclusive property of MKEC Engineering (MKEC), and may not be used or reproduced in any way without the express consent of MKEC.

EROSION CONTROL PLAN

PROJECT NO.	472-85451	
DATE	1/02/19	
SCALE	1"=20'	
DESIGNED	DRAWN	CHECKED
JRA	RAM	JRA
NO.	REVISION	DATE