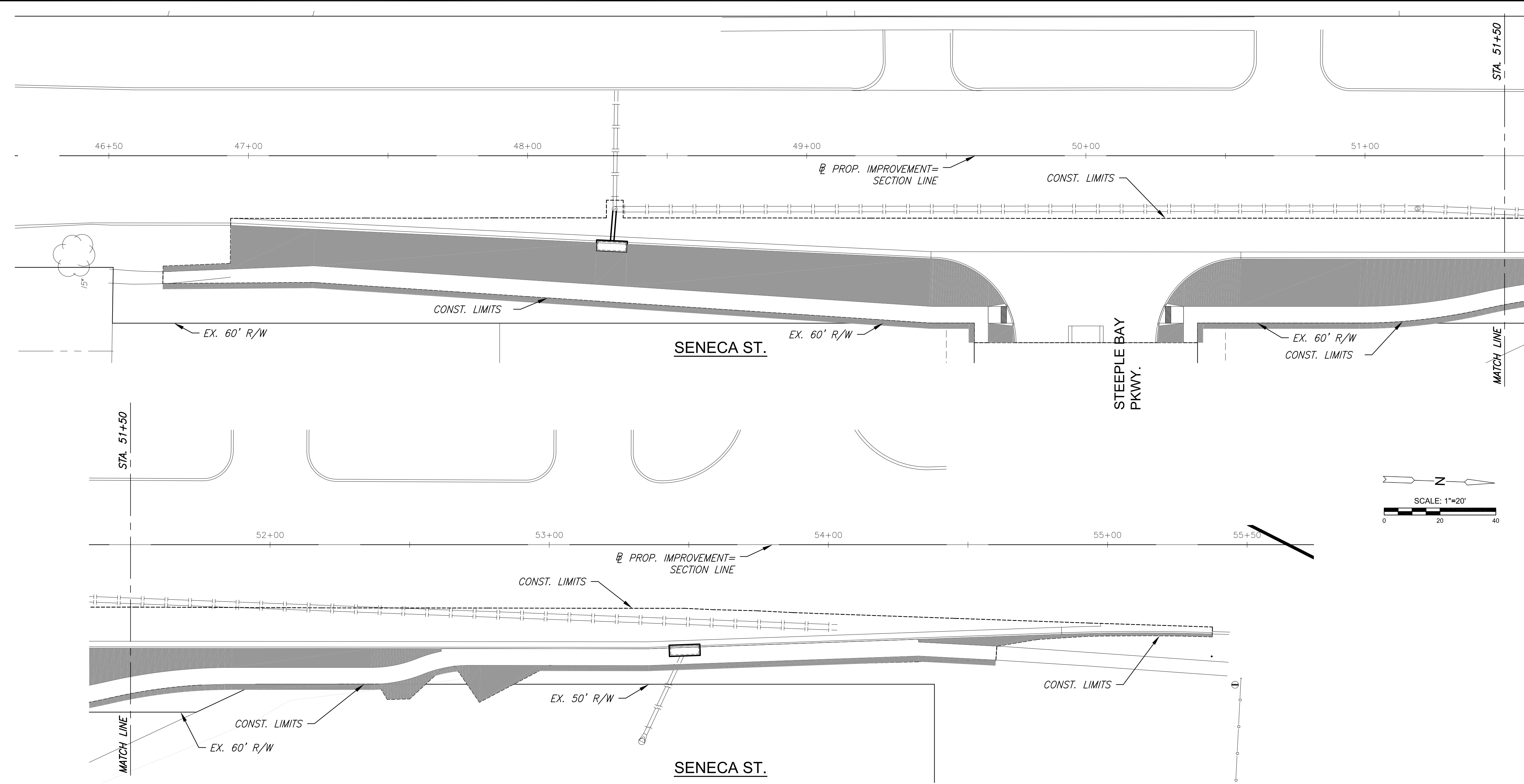


J:\PROJECTS\2017\170101043_LANES_STEEPLE BAY_17143_CADD\SHOTS\06_CIVIL\SENECA STREET IMPROVEMENTS\17143_SENECA_LP01.DWG PLOTTED: Friday, December 28, 2018 @ 10:15AM



ROADSIDE IMPROVEMENTS SUMMARY (FOR INFORMATION ONLY)	
PROJECT PORTION	AREA (S.Y.)
PROJECT TOTAL SEEDING	958.1

LEGEND
 SEED, SEE NOTE ON SHEET 16.



SENECA STREET IMPROVEMENTS FOR
STEEPLE BAY ADDITION
 WICHITA, KANSAS

©2018 MKEC Engineering All Rights Reserved www.mkec.com
 These drawings and their contents, including, but not limited to, all concepts, designs, & ideas are the exclusive property of MKEC Engineering (MKEC), and may not be used or reproduced in any way without the express consent of MKEC.

ROADSIDE IMPROVEMENT PLAN

PROJECT NO.	472-85451	
DATE	1/02/19	
SCALE	1"=20'	
DESIGNED	DRAWN	CHECKED
JRA	RAM	JRA

NO.	REVISION	DATE