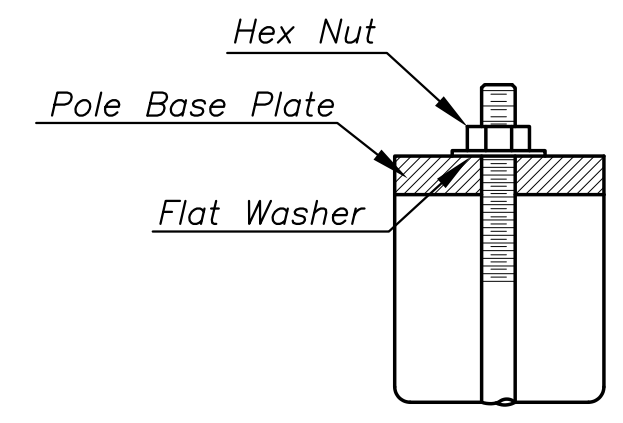
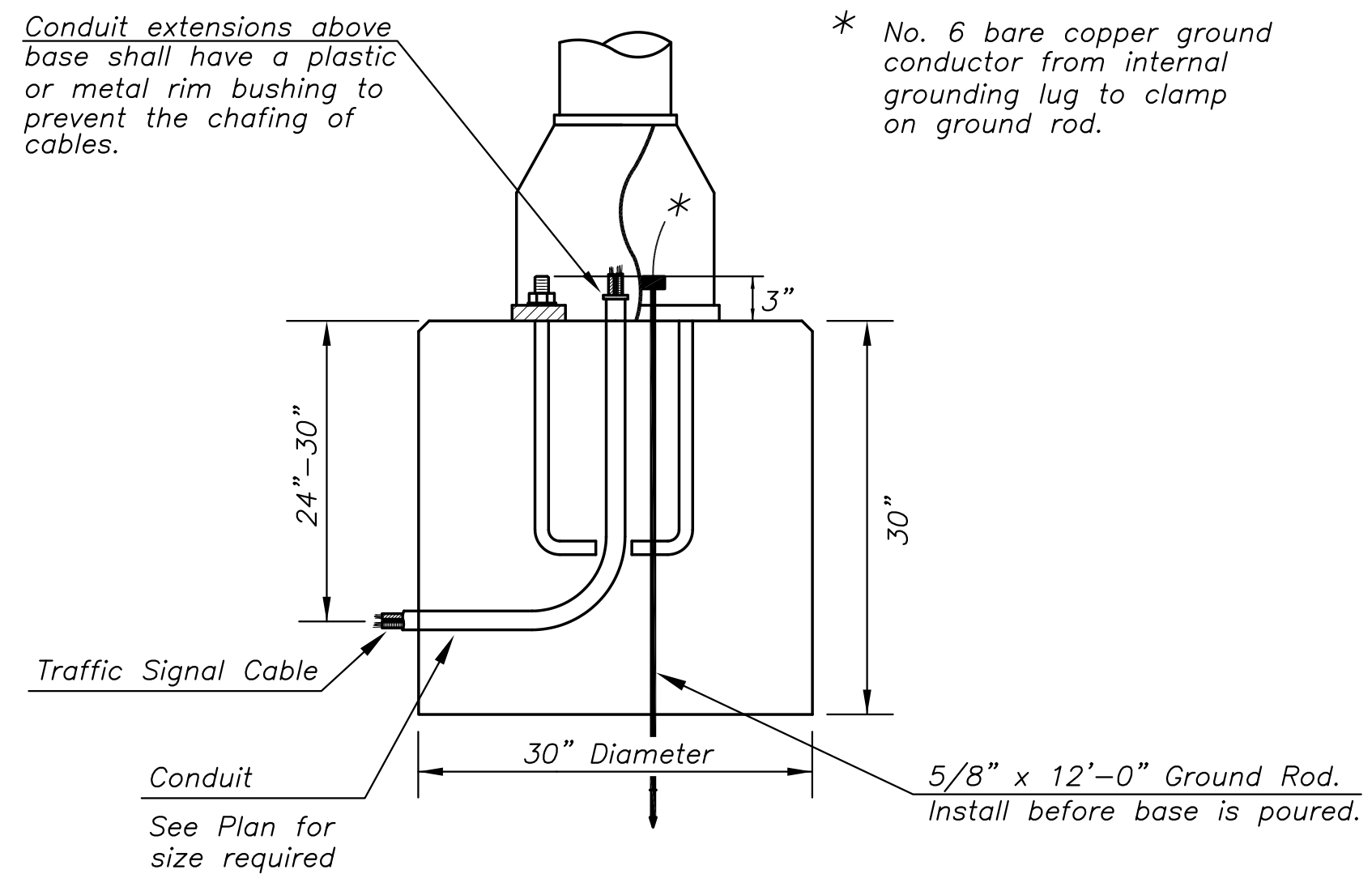
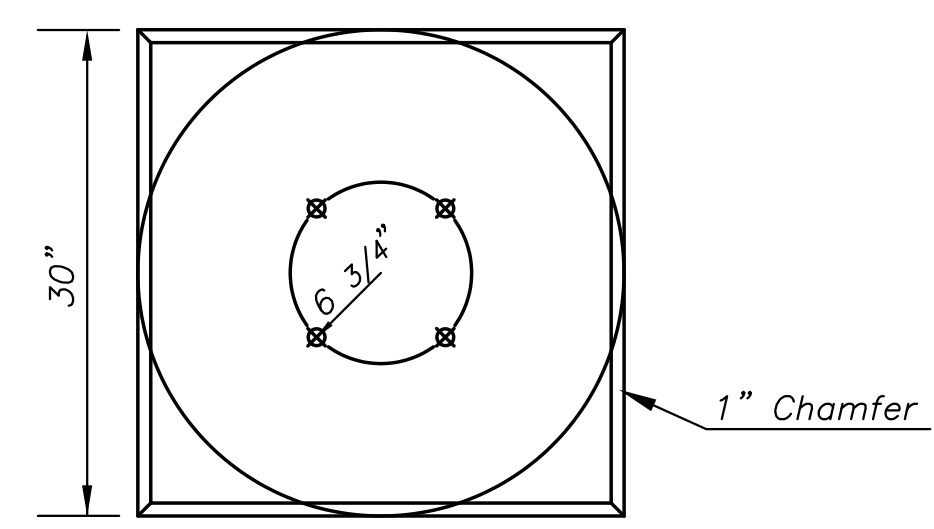


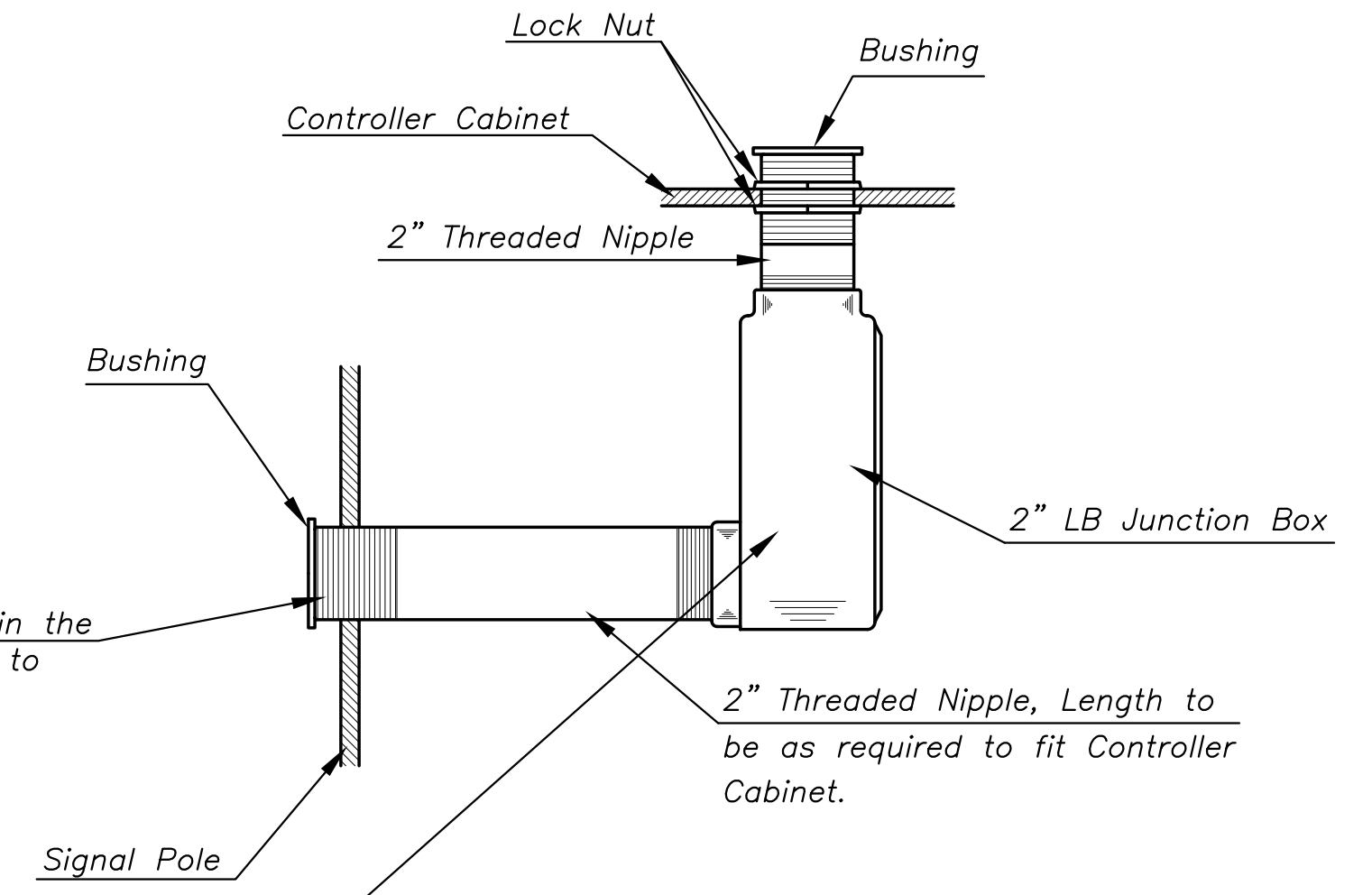
Use Keystone "No-Weld Number 1 Anti-Seize Compound" on all bolts & nuts.



**ANCHOR BOLT  
DETAIL**



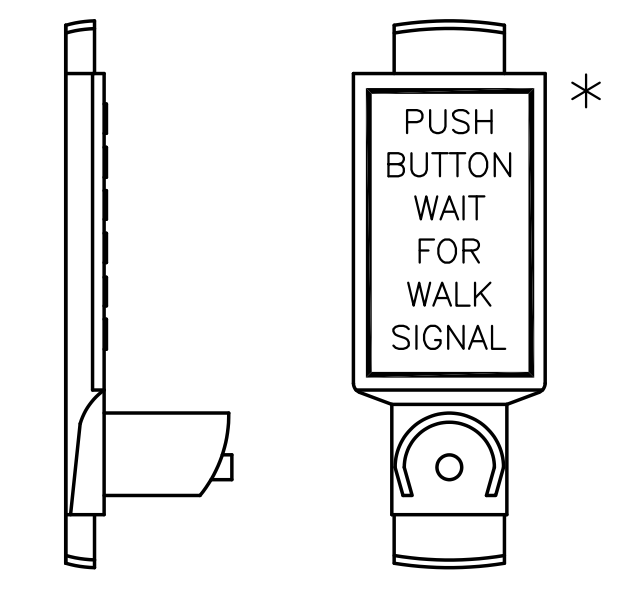
**CONCRETE BASE DETAIL**



A hole shall be drilled in the signal pole & threaded to receive the 2" nipple.

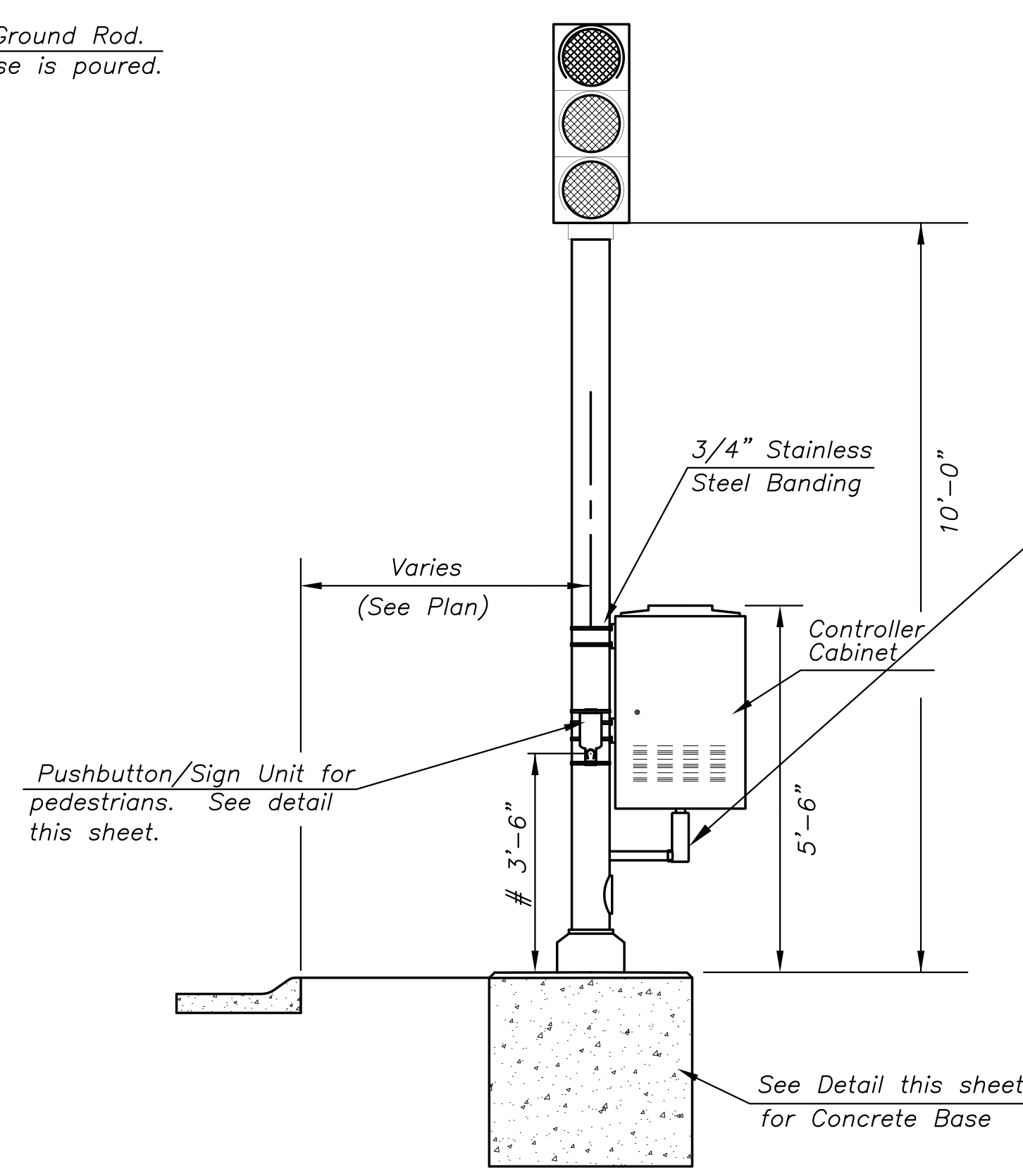
2" Threaded Nipple, Length to be as required to fit Controller Cabinet.

\* NOTE: MESSAGE TO BE CAST WITH HOUSING (ONE PIECE)



**PEDESTRIAN PUSHBUTTON/SIGN  
UNIT DETAIL**

INSTALL PEDESTRIAN PUSHBUTTON UNDERNEATH CORRESPONDING PEDESTRIAN SIGNAL HEAD ON SIDE OF POLE NEAREST CROSSWALK. UNIT SHALL BE FIRMLY ATTACHED TO THE SIDE OF POLE WITH 3/4" STEEL BANDS. SHARP ENDS SHALL BE FOLDED UNDER TO PREVENT INJURY TO PEDESTRIANS.



**TRAFFIC SIGNAL PEDESTAL**

# From Sidewalk Finish Grade to Center of Pushbutton.

**CITY OF WICHITA**  
PUBLIC WORKS & UTILITIES  
ENGINEERING DIVISION

TRAFFIC SIGNAL PEDESTAL & CONCRETE BASE		
TRAFFIC ENGINEER <b>PAUL GUNZELMAN, P.E.</b>		
PROJECT NUMBER 472-85451	OCA NUMBER 766424	DATE 05/1997
CITY ENGINEER'S OFFICE CITY HALL - SEVENTH FLOOR 455 NORTH MAIN STREET WICHITA, KANSAS 67202-1620 (316) 268-4501		SHEET <b>26 OF 37</b>