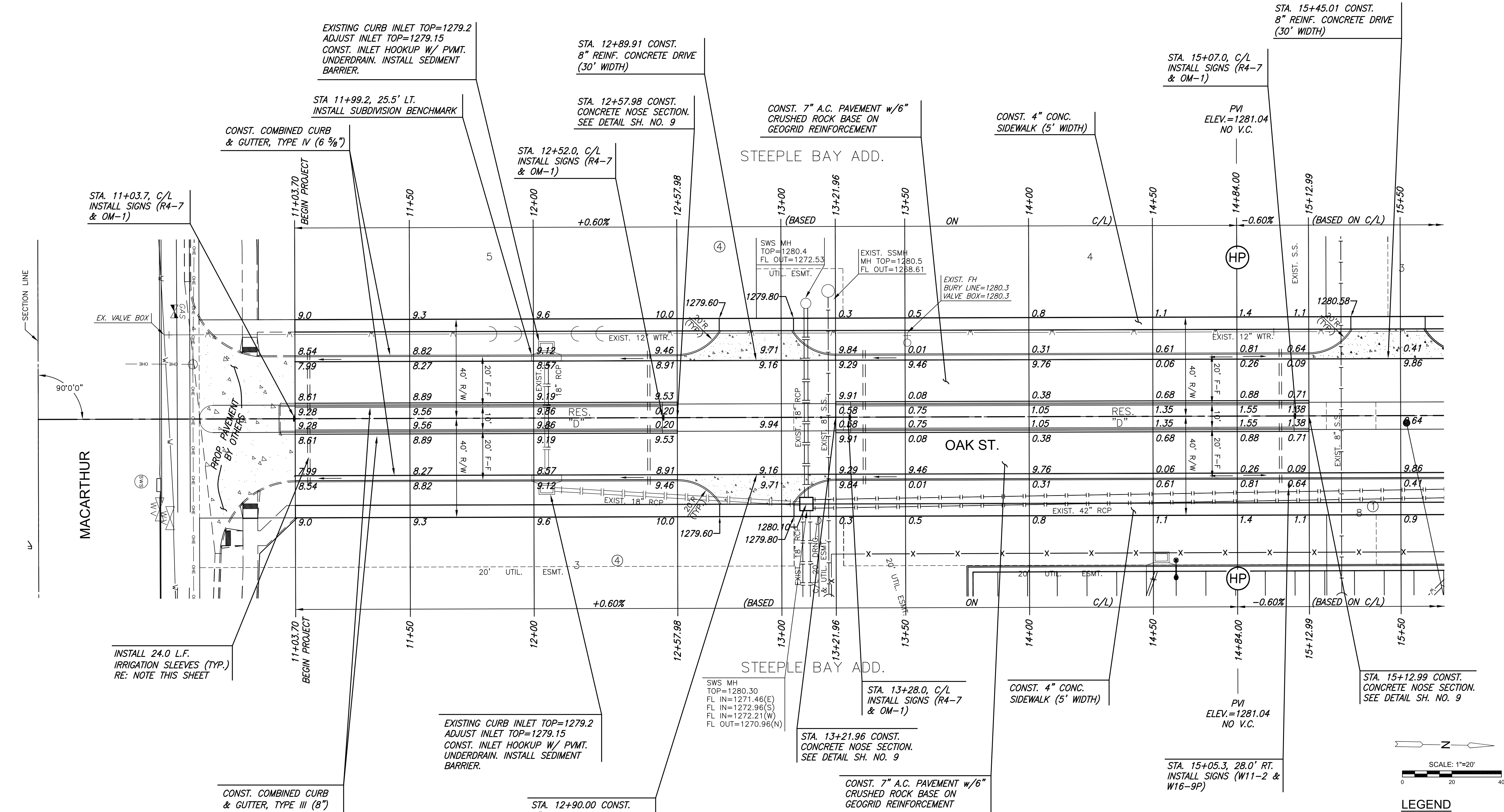


J:\PROJECTS\2017\1701010143\_LANGE\_STEEPLE BAY\_17143\_CADD\SHS\06\_CIVIL\PAV17143-06-5003.DWG  
 PLOTTED: Thursday, December 27, 2018 @ 10:58AM

SUBDIVISION BENCH MARKS				
NO.	STREET AND STATION	FROM CL	DESCRIPTION	ELEVATIONS
4	OAK, STA. 11+99.2	25.5' LT	TOP OF CURB AT W END OF INLET HOOKUP	

NOTE: CONTRACTOR SHALL INSTALL SUBDIVISION BENCH MARKS ("FLAT SURVEY MARKERS NO. 8134-08 3" TOP DIAMETER" PROVIDED BY KANSAS BLUE PRINT CO., INC.) COSTS TO BE CONSIDERED SUBSIDIARY TO CONSTRUCTION OF COMBINED CURB AND GUTTER.



NOTE:  
 INSTALL IRRIGATION SLEEVES IN LOCATIONS NOTED ON THE PLANS. TWO SLEEVES ARE REQUIRED IN EACH LOCATION: ONE (1) 1.5" AND ONE (1) 4" PVC CLASS 200 SDR 21 SLEEVES. BOTH SHALL EXTEND 18" BEYOND THE BACK OF CURB, BUILDING, OR SIDEWALK AND BE MARKED. INSTALL TEMPORARY T-POST MARKER AT SLEEVE ENDS.



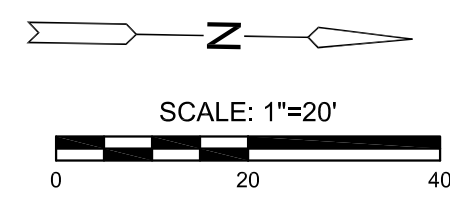
PAVING & INCIDENTAL DRAINAGE FOR  
**STEEPLE BAY ADDITION**  
 WICHITA, KANSAS

©2018 MKEC Engineering All Rights Reserved  
 www.mkec.com  
 These drawings and their contents, including, but not limited to, all concepts, designs, & ideas are the exclusive property of MKEC Engineering (MKEC), and may not be used or reproduced in any way without the express consent of MKEC.

**OAK ST. PLAN**

PROJECT NO.	472-85452	
DATE	DEC. 2018	
SCALE	1"=20'	
DESIGNED	DRAWN	CHECKED
SPE	WNJ	SPE

NO.	REVISION	DATE



**LEGEND**

—+ STREET SIGN & SIGN LOCATION  
 (SEE SIGN ASSEMBLY TABLE FOR TYPE & STATION OF SIGN)

NOTE:  
 TOP OF CURB ELEVATIONS SHOWN ARE FOR FULL CURB. CONSTRUCT CURB AND GUTTER AS NOTED.