

Steeple Bay Addition (SUB2017-00041)

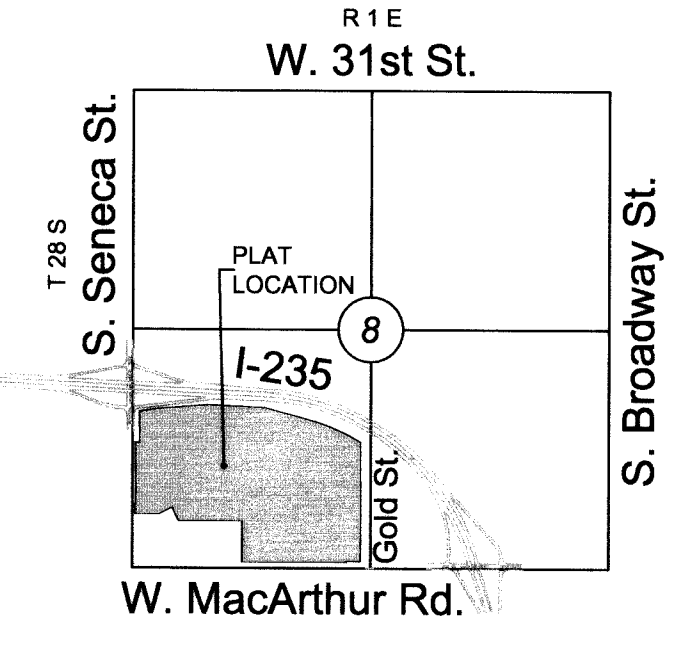
# FINAL PLAT

## STEEPLE BAY ADDITION

AN ADDITION TO WICHITA, SEDGWICK COUNTY, KANSAS

### BENCHMARKS

- BM#1 North rim of sanitary sewer manhole on west side of Gold Street, 700 feet north of the intersection of Gold Street and MacArthur Road. 15 feet north of the north edge of access drive going west into mobile home park. 70 feet west of the west edge of Gold Street. Manhole top is 2.5 feet above existing ground. Elev.=1280.01 NAVD88
- BM#2 North rim of sanitary sewer manhole on east side of Seneca Street, 700 feet north of the intersection of Seneca Street and MacArthur Road. 5 feet north of the north edge of driveway. 25 feet east of the west edge of Seneca Street. Elev.=1278.68 NAVD88



VICINITY MAP

LOTS	BLOCK	ELEVATION
inclusive		NAVD 88
1 - 7	1	1283.0
8 - 11	1	1282.0
1	2	1282.0
1 - 2	3	1282.0
1 - 5	4	1282.0

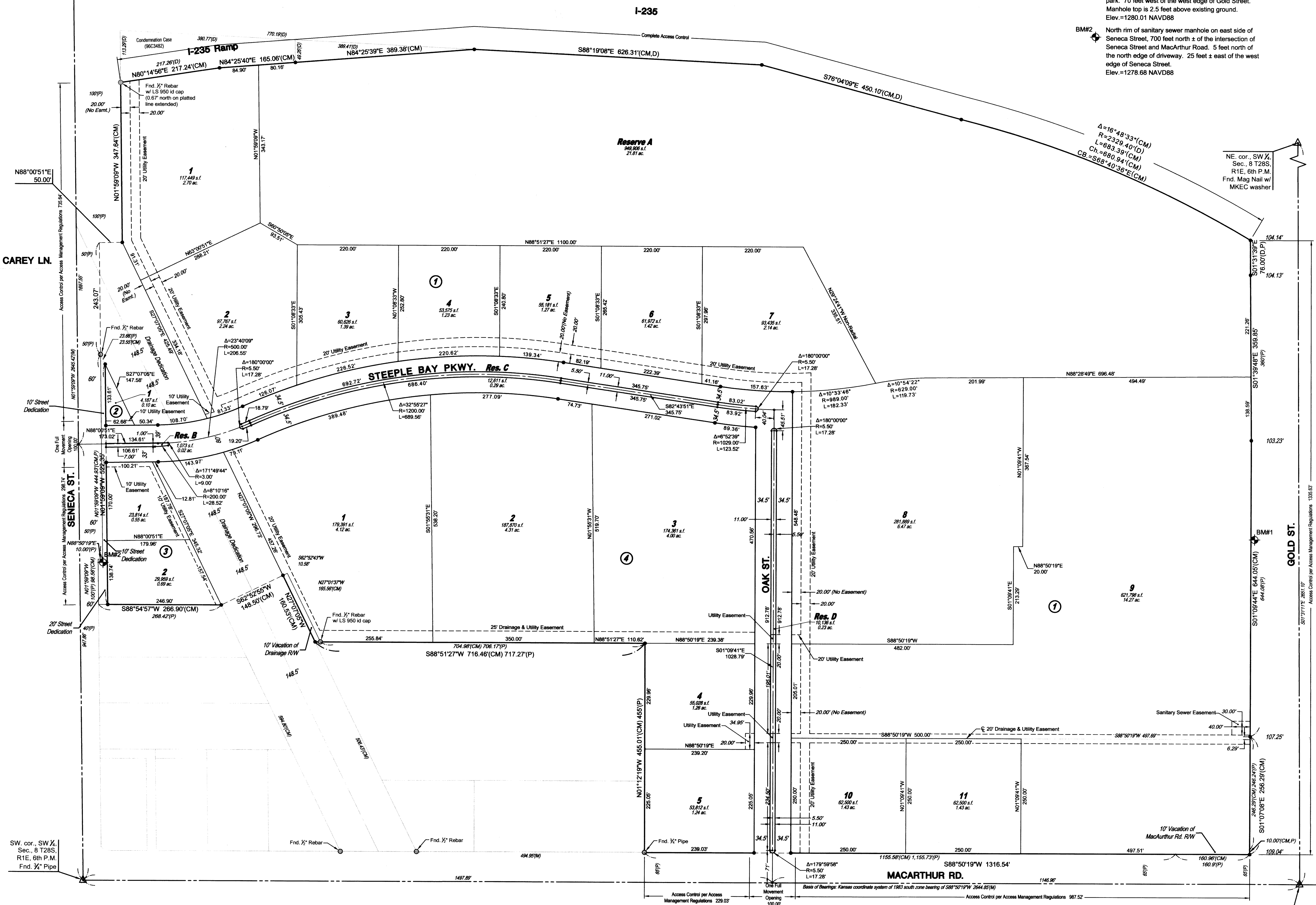
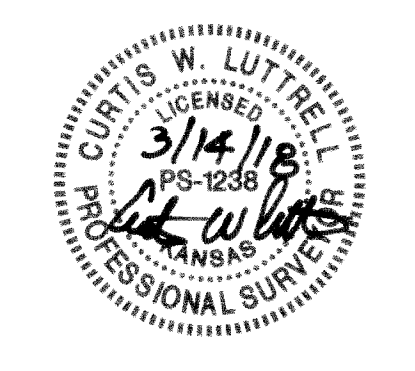
SCALE: 1" = 100'

Basis of Bearings: Kansas coordinate system of 1983 south zone bearing of S88°50'19"W on the south line of the Southwest Quarter, Section 8, Township 28 South, Range 1 East of the 6th Principal Meridian.

This plat is surveyed and platted on NAD83 using Kansas state plane south zone coordinates, modified to the surface, having a combined adjustment scale factor of 1.000120014401728

### LEGEND

- Date of Survey: 9/1/2017
- △ = Section Corner Monument Found
  - = Found monument (see annotation for type)
  - = Set 3/8" rebar w/ MKEC CLS 39 id. cap (or see annotation for type)
  - ⊕ = Benchmark
  - (M) = Measured
  - (D) = Described
  - (P) = Platted
  - (CM) = Calculated from Measurement
  - (CD) = Calculated from Described
  - ① = Lot
  - ② = Block



1/2