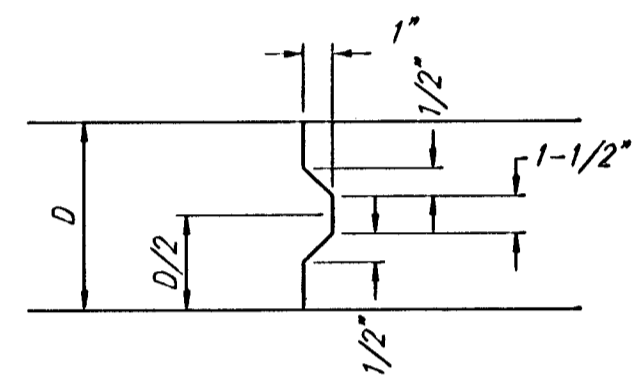
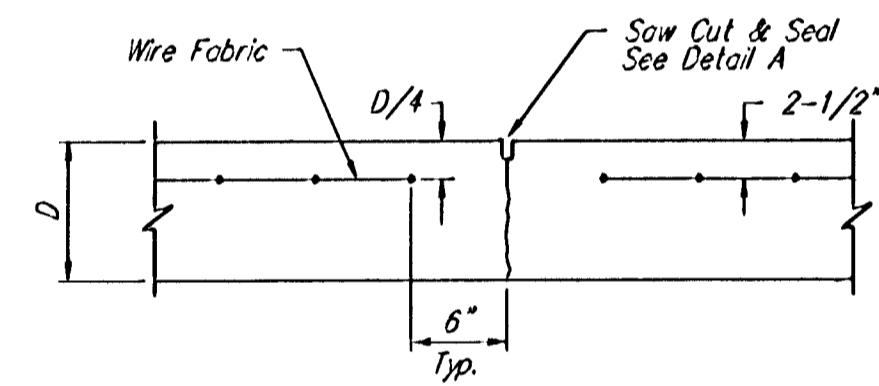


EXPANSION JOINT

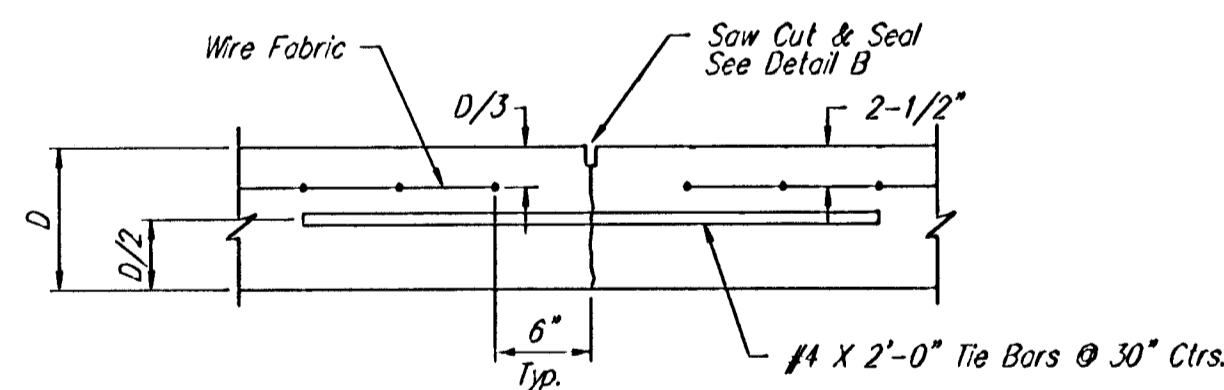
NOTE: Extra Thickness to be Subsidiary to Price of Square Yards Pavement



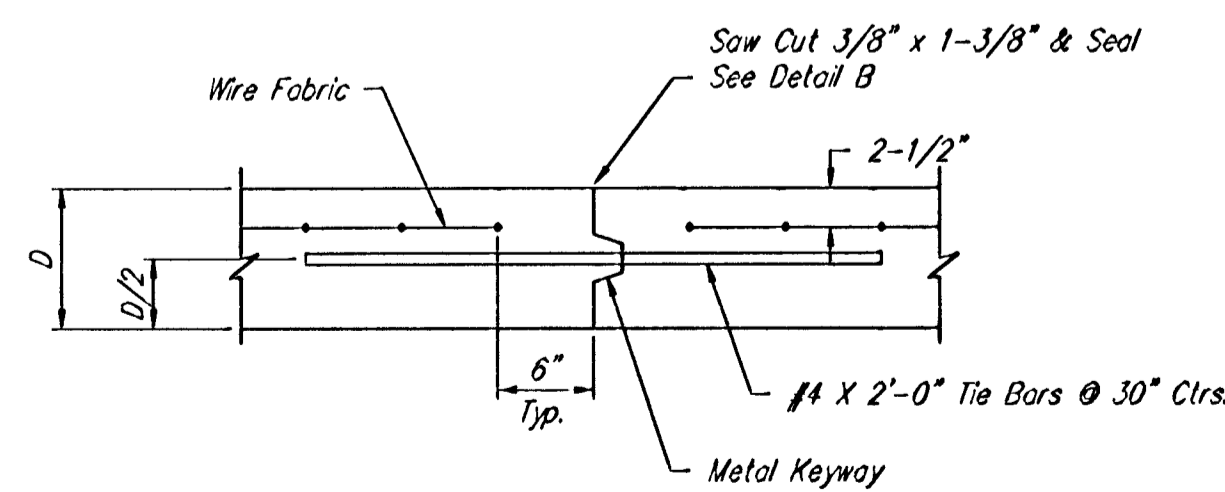
KEYWAY DETAIL



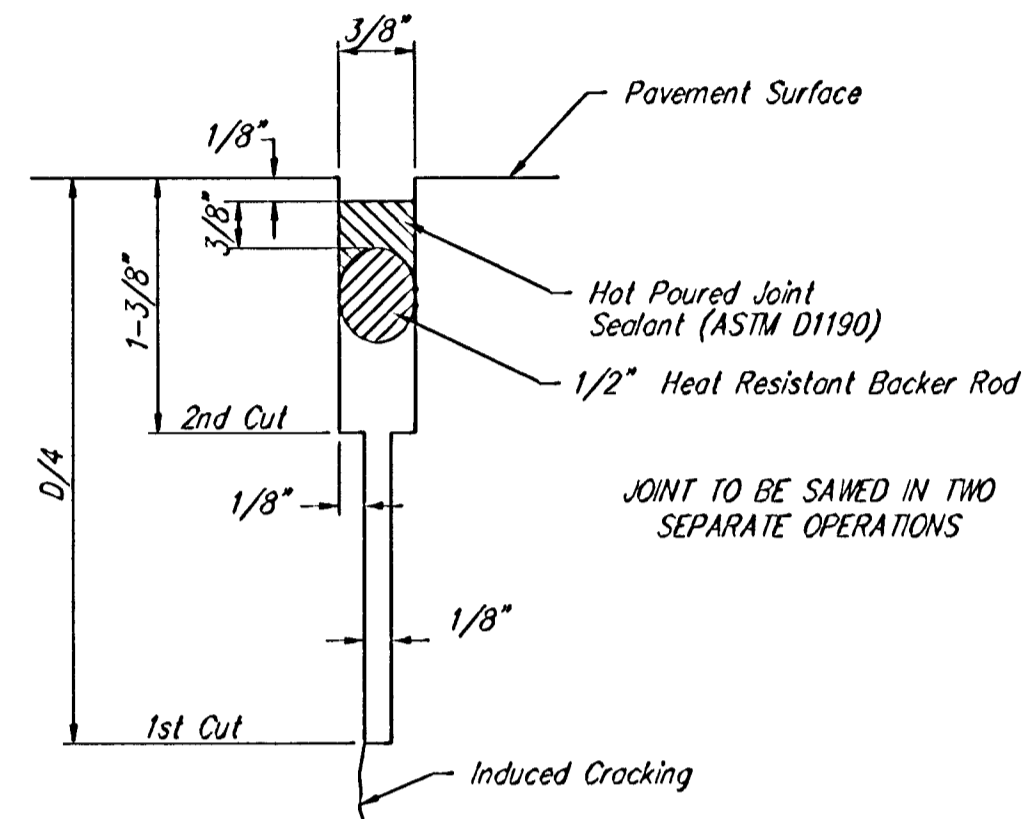
CONTRACTION JOINT DETAIL (C.J.)



LONGITUDINAL JOINT DETAIL (L.J.)

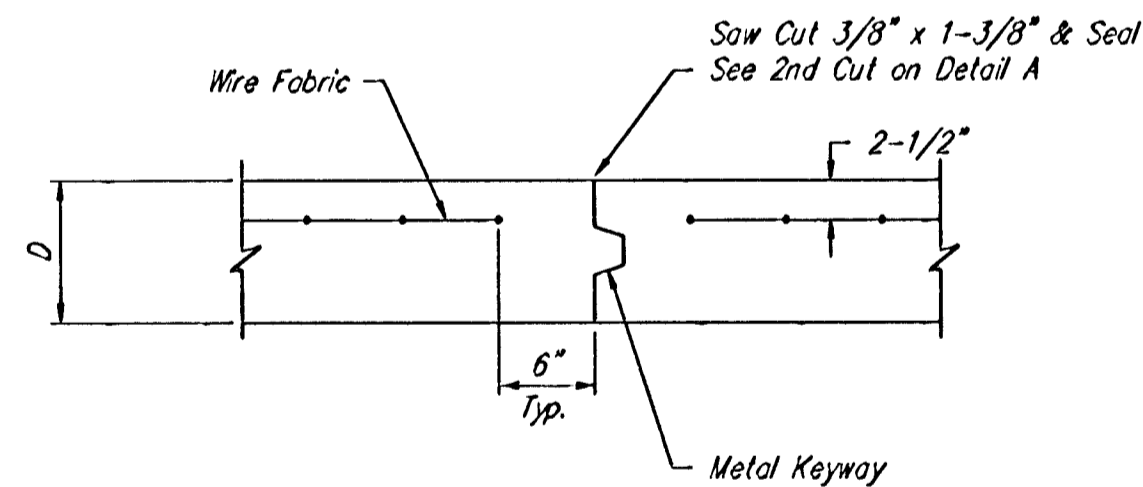


OPTIONAL LONGITUDINAL JOINT DETAIL (L.J.) (CONSTRUCTION JOINT)

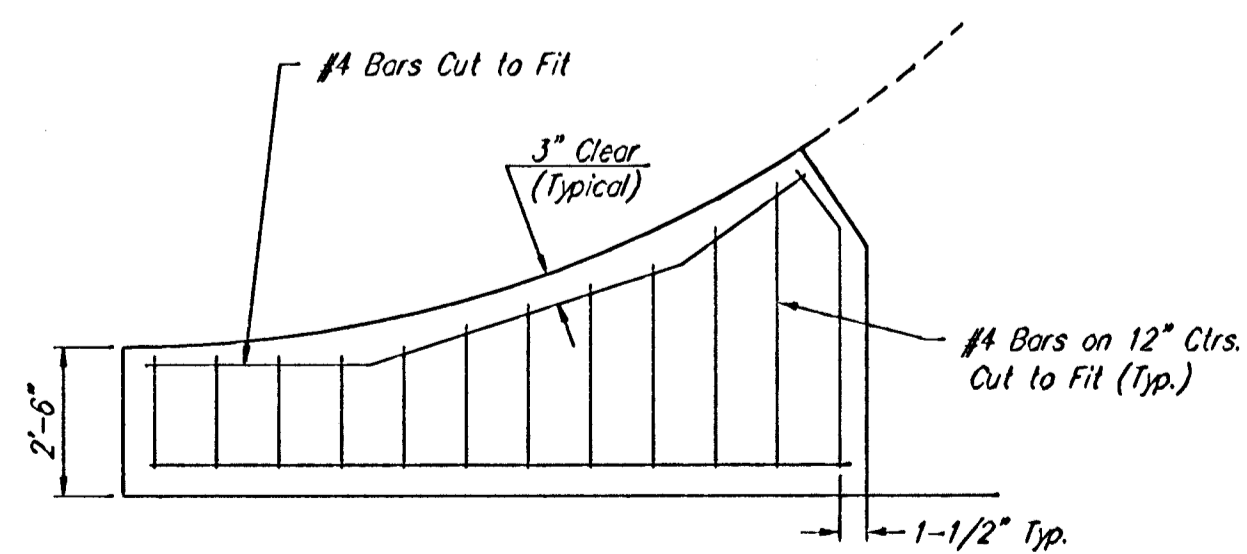


SAW JOINT DETAIL "A"

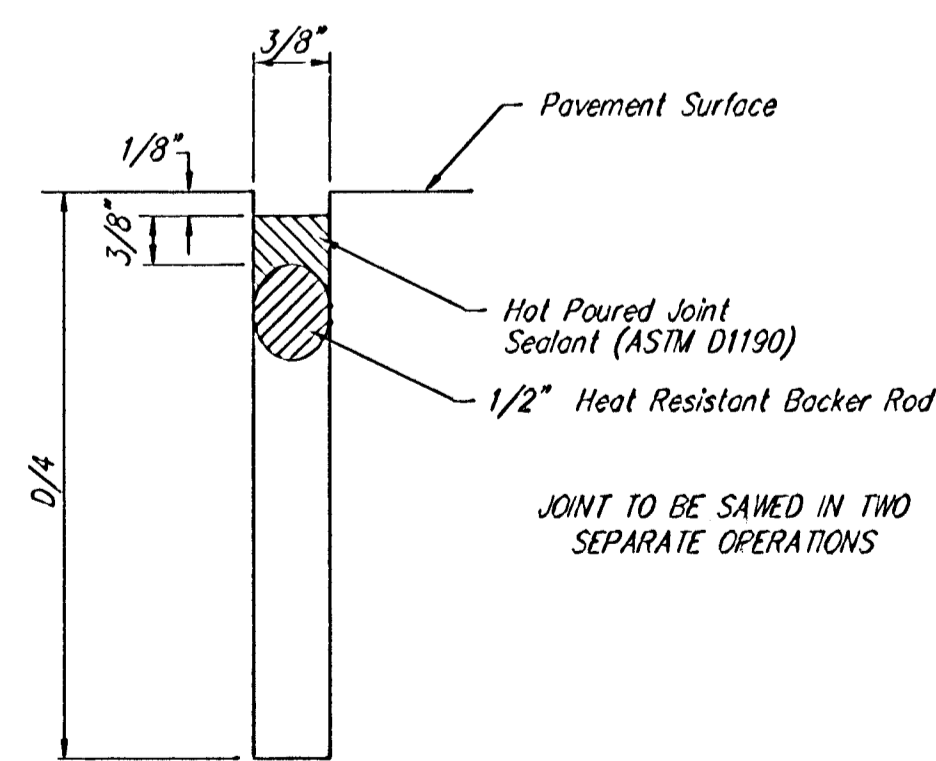
NOTE: 6" X 12" WAXW4 Wire Fabric Reinforcing Shall Be Placed So That The Wires With The 6" Spacing Will Run Parallel With The Longitudinal Joints.



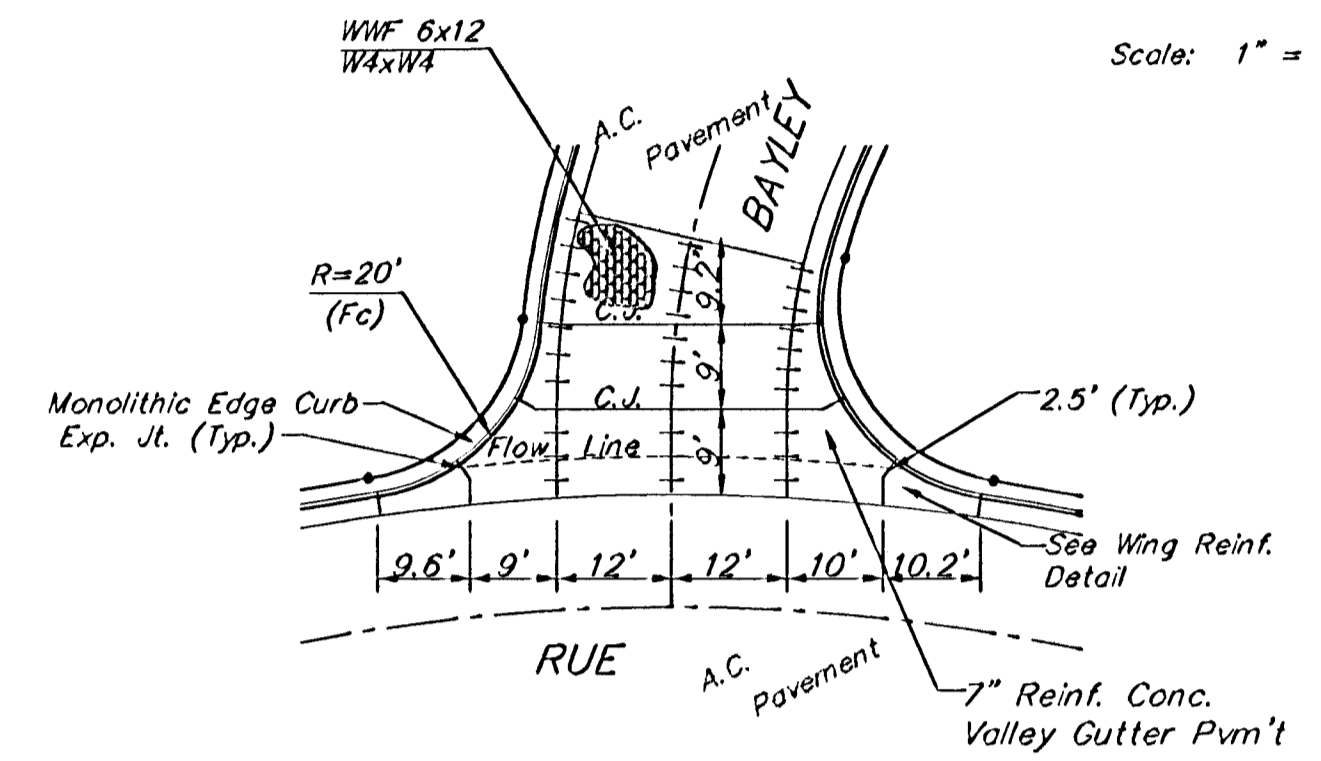
OPTIONAL CONTRACTION JOINT (CONSTRUCTION JOINT)



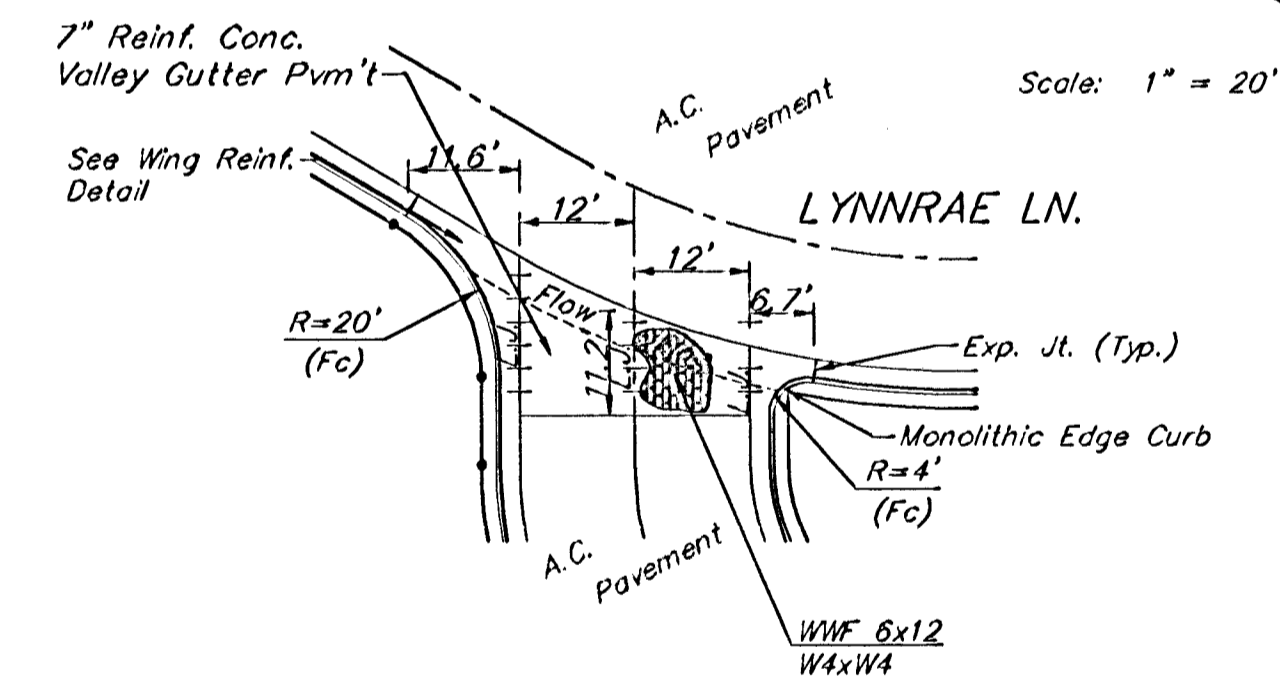
WING REINFORCING DETAIL



SAW JOINT DETAIL "B"



Scale: 1" = 20'



Scale: 1" = 20'

VALLEY GUTTER DETAILS

BAUGHMAN COMPANY P.A.
ENGINEERING, SURVEYING, & PLANNING
315-282-7271 • 315 ELLIS • WICHITA, KANSAS 67211

PROJECT NUMBER 472-89788		SHEET 4	
DESIGN STAFF	DRAWN STAFF	APPROVED	DATE 06-03
SCALE NONE		DATE 06-03	

03-05-5579