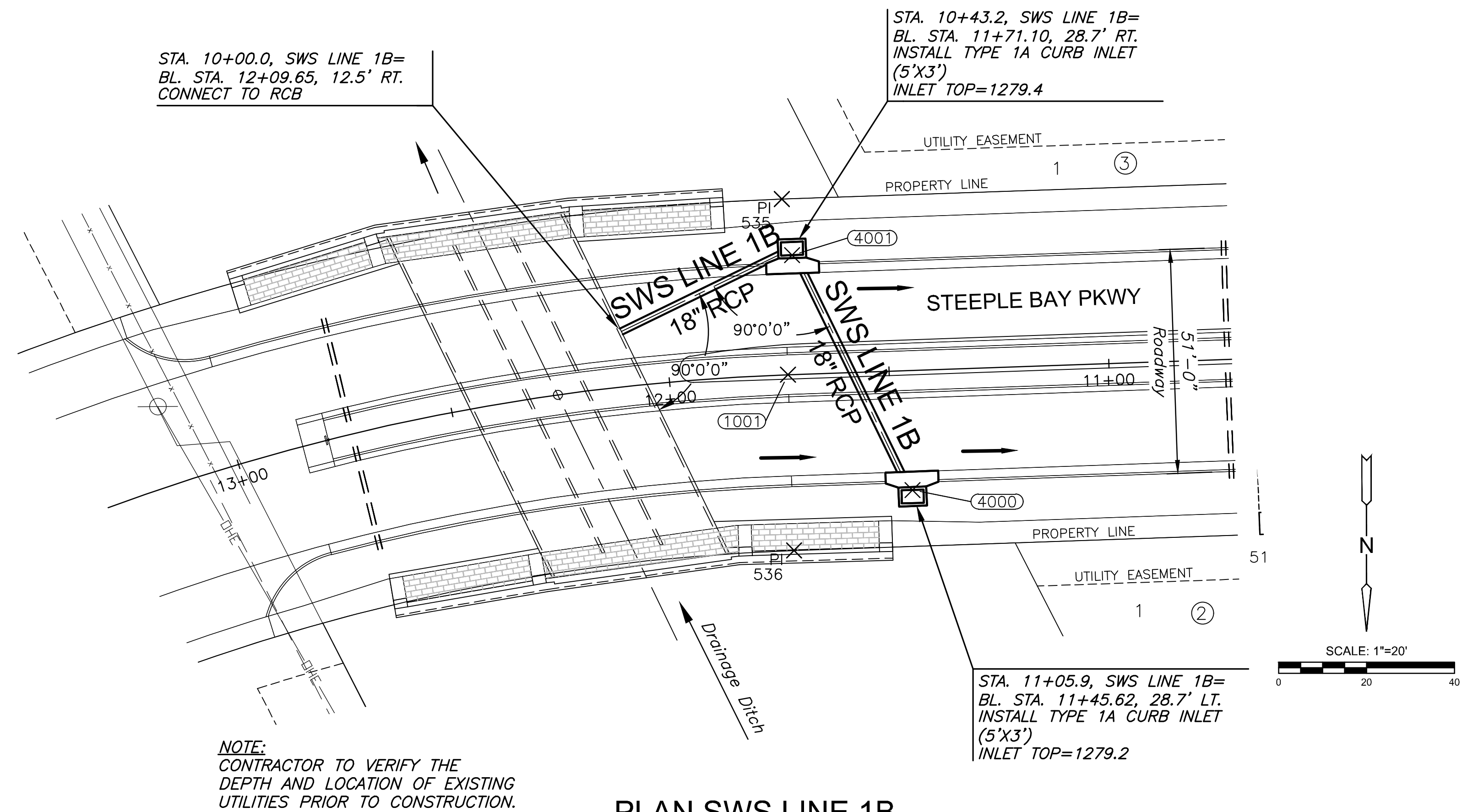


BASELINE POINTS					
Point #	Station	Northing	Easting	Desc.	Baseline
1000	10+00.00, 0.00'	1663538.69	1644869.24	PI	STEEPLE BAY PKWY.
1001	11+73.02, 0.00'	1663544.69	1645042.15	PC	STEEPLE BAY PKWY.
1002	13+79.57, 0.00'	1663593.68	1645241.30	PRC	STEEPLE BAY PKWY.
1003	20+69.13, 0.00'	1663702.33	1645912.68	PT	STEEPLE BAY PKWY.
1004	24+14.89, 0.00'	1663658.58	1646255.65	PC	STEEPLE BAY PKWY.
1005	25+92.49, 0.00'	1663651.39	1646432.89	PT	STEEPLE BAY PKWY.
1006	11+73.02, 500.00' LT.	1664044.39	1645024.83	RAD.PT.	STEEPLE BAY PKWY.
1007	13+79.57, 1200.00' RT.	1662511.98	1645760.85	RAD.PT.	STEEPLE BAY PKWY.
1008	24+14.88, 1029.00' LT.	1664679.31	1646385.85	RAD.PT.	STEEPLE BAY PKWY.

STORM WATER SEWER POINTS				
Point #	Station	Northing	Easting	Desc.
4000	11+45.62, 27.17' LT.	1663570.89	1645013.83	INLET
4001	11+71.10, 27.17' RT.	1663517.47	1645041.18	INLET

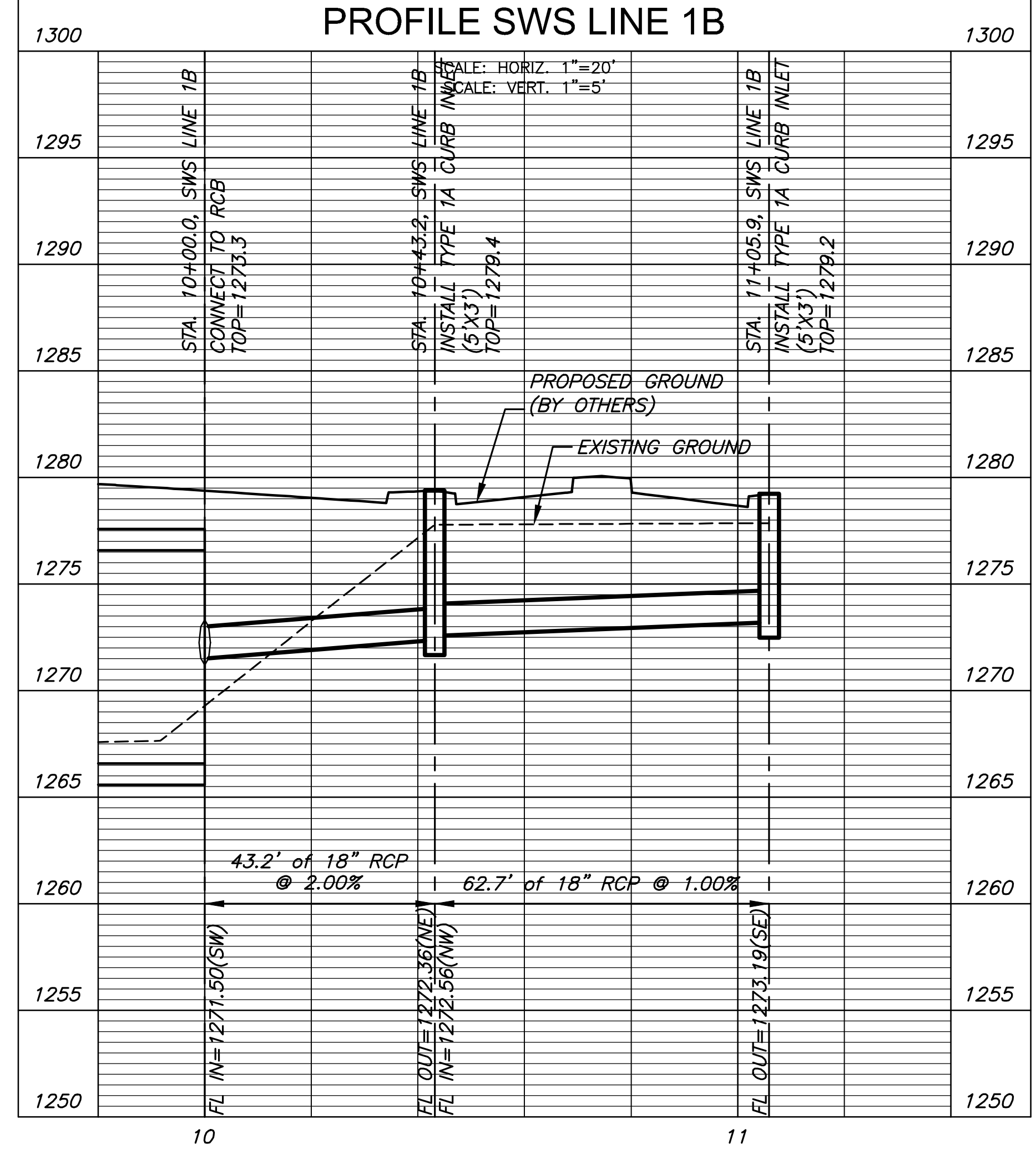
PLAT POINTS			
Point #	Northing	Easting	Desc.
504	1662707.77	1647435.64	PI
505	1662687.56	1646438.34	PI
506	1662685.93	1646358.36	PI
507	1662681.09	1646119.38	PI
508	1663136.00	1646109.81	PI
509	1663121.71	1645393.49	PI
510	1663264.60	1645320.32	PI
511	1663196.91	1645188.14	PI
512	1663192.24	1644941.29	PI
513	1663500.79	1644930.59	PI
514	1663580.75	1644927.82	PI
515	1663714.27	1644923.19	PI
516	1663979.88	1644954.00	PI
517	1664327.32	1644941.95	PI
518	1664364.11	1645156.06	PI
519	1664380.14	1645320.34	PI
520	1664417.95	1645707.88	PI

PLAT POINTS			
Point #	Northing	Easting	Desc.
521	1664399.58	1646333.92	PI
522	1664291.22	1646770.78	PI
523	1664043.60	1647405.11	PI
524	1663967.63	1647407.13	PI
525	1663607.93	1647417.58	PI
526	1662964.02	1647430.64	PI
527	1663611.32	1646339.60	PI
528	1663690.84	1646418.00	PI
529	1663698.26	1646260.71	PI
530	1663618.91	1646250.59	PI
531	1663662.65	1645907.62	PI
532	1663742.01	1645917.74	PI
533	1663629.73	1645223.98	PI
534	1663557.62	1645258.62	PI
535	1663504.71	1645043.54	PI
536	1663584.66	1645040.77	PI



**NOTE:**  
CONTRACTOR TO VERIFY THE  
DEPTH AND LOCATION OF EXISTING  
UTILITIES PRIOR TO CONSTRUCTION.

**PLAN SWS LINE 1B**  
**PROFILE SWS LINE 1B**



SWS IMPROVEMENTS - REINFORCED BOX CULVERT

# STEEPLE BAY ADDITION

WICHITA, KANSAS

©2019  
MKEC Engineering  
All Rights Reserved  
www.mkec.com  
These drawings and their contents, including, but not limited to, all concepts, designs, & ideas are the exclusive property of MKEC Engineering (MKEC), and may not be used or reproduced in any way without the express consent of MKEC.

SWS LINE 1B		
PROJECT NO.	468-85316	
DATE	1/09/19	
SCALE	1"=20'	
DESIGNED	DRAWN	CHECKED
SPE	MKB	SPE
NO.	REVISION	DATE
SHEET NO.		
8 OF 17		