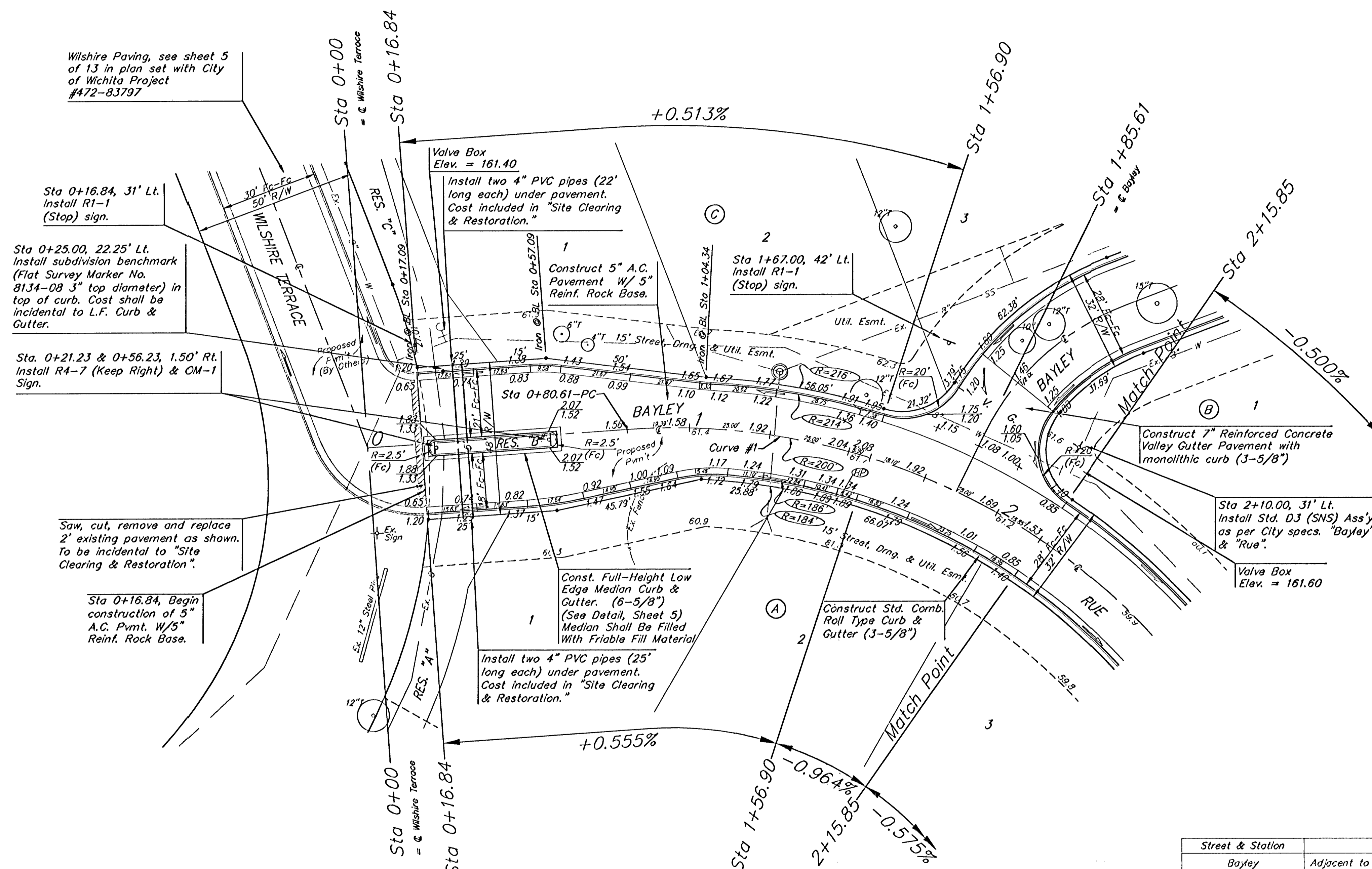
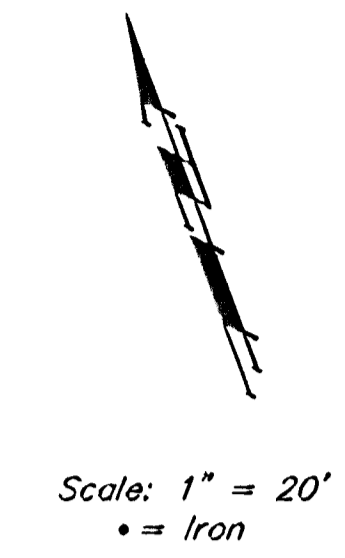


BENCHMARKS:
 BM #1: Small RR spike in NW face of PP, 5.4' NW of the most westerly corner of Lot 1, Block A, Grace Park Addition.
 Elev. = 158.64 City Datum

BM #2: "□" on top of curb SE corner of Res. "G", Cedarview Addition.
 Elev. = 161.87 City Datum



Wishire Paving, see sheet 5 of 13 in plan set with City of Wichita Project #472-83797

Sta 0+16.84, 31' Lt. Install R1-1 (Stop) sign.

Sta 0+25.00, 22.25' Lt. Install subdivision benchmark (Flat Survey Marker No. 8134-08 3" top diameter) in top of curb. Cost shall be incidental to L.F. Curb & Gutter.

Sta. 0+21.23 & 0+56.23, 1.50' Rt. Install R4-7 (Keep Right) & OM-1 Sign.

Saw, cut, remove and replace 2' existing pavement as shown. To be incidental to "Site Clearing & Restoration".

Sta 0+16.84, Begin construction of 5" A.C. Pmnt. W/5" Reinf. Rock Base.

Valve Box Elev. = 161.40

Install two 4" PVC pipes (22' long each) under pavement. Cost included in "Site Clearing & Restoration."

Construct 5" A.C. Pavement W/ 5" Reinf. Rock Base.

Sta 1+67.00, 42' Lt. Install R1-1 (Stop) sign.

Construct 7" Reinforced Concrete Valley Gutter Pavement with monolithic curb (3-5/8")

Sta 2+10.00, 31' Lt. Install Std. DJ (SNS) Ass'y as per City specs. "Bayley" & "Rue".

Valve Box Elev. = 161.60

Curve #1
 Curve Data Based on Centerline
 Rad. = 200' Delta = 70° 54' 04" Tangent = 142.40'
 Arc = 247.49' L.C. = 232.00' Del/Pt. = 8.59442 Min.

Station	Arc	FACE CHORD LENGTHS		Defl.	I. Defl.
		B' Lt.	B' Rt.		
0+80.61	-	-	-	0'00"00"	0'00"00"
1+00.00	19.39'	21.51'	17.25'	2'46'39"	2'46'39"
1+05.73	5.73'	6.36'	5.10'	0'49'15"	3'35'53"
1+13.07	7.34'	8.15'	6.53'	1'03'05"	4'38'58"
1+25.00	11.93'	13.24'	10.62'	1'42'32"	6'21'30"
1+50.00	25.00'	27.73'	22.24'	3'34'51"	9'56'22"
1+56.90	6.90'	7.66'	6.14'	0'59'18"	10'55'40"
1+75.00	18.10'	20.08'	16.10'	2'35'33"	13'31'13"
1+85.61	10.61'	11.78'	9.44'	1'31'11"	15'02'25"
2+00.00	14.39'	15.93'	12.80'	2'03'40"	17'06'05"
2+15.85	15.85'	17.59'	14.10'	2'16'13"	19'22'18"
2+25.00	9.15'	10.16'	8.14'	1'18'38"	20'40'57"
2+50.00	25.00'	27.73'	22.24'	3'34'51"	24'15'48"
2+75.00	25.00'	27.73'	22.24'	3'34'51"	27'50'40"
3+00.00	25.00'	27.73'	22.24'	3'34'51"	31'25'32"
3+25.00	25.00'	27.73'	22.24'	3'34'51"	35'00'23"
3+28.10	3.10'	3.44'	2.76'	0'26'38"	35'27'02"

P.V.I.
 Elev. = 161.95
 33.66' V.C.

P.V.I.
 Elev. = 161.40
 No V.C.

Subdivision Bench Marks

Street & Station	Location Description	Elevation
Bayley 0+25.00, 22.25' Lt.	Adjacent to Fire Hydrant at E. End of N.E. Curb Return of Wishire Terrace & Bayley	
Lynnrae Lane 5+85.03, 14.25' Lt.	Adjacent to Fire Hydrant at S.W. corner of Lot 5, Block B.	
Lynnrae Lane 10+76.80, 14.25' Lt.	Adjacent to Fire Hydrant at N.E. corner of Lot 8, Block B.	

Remove trees only as necessary for street construction. Cost of removal to be incidental to lump sum bid item "Site Clearing & Restoration".

NOTE: ROLL TYPE CURB & GUTTER TO BE CONSTRUCTED ON THE PAVEMENT SHOWN ON THIS SHEET. TOP OF CURB ELEVATIONS ARE GIVEN FOR FULL HEIGHT CURB.

GRACE PARK ADDITION
BAYLEY
 STA 0+00 TO STA 2+15.85

BAUGHMAN COMPANY P.A.
 ENGINEERING, SURVEYING, & PLANNING
 315-282-7271 • 315 ELLIS • WICHITA, KANSAS 67211

PROJECT NUMBER
472-83798

DESIGN DRAWN TMS APPROVED DATE 08/03 SCALE Noted SHEET 6 OF 29