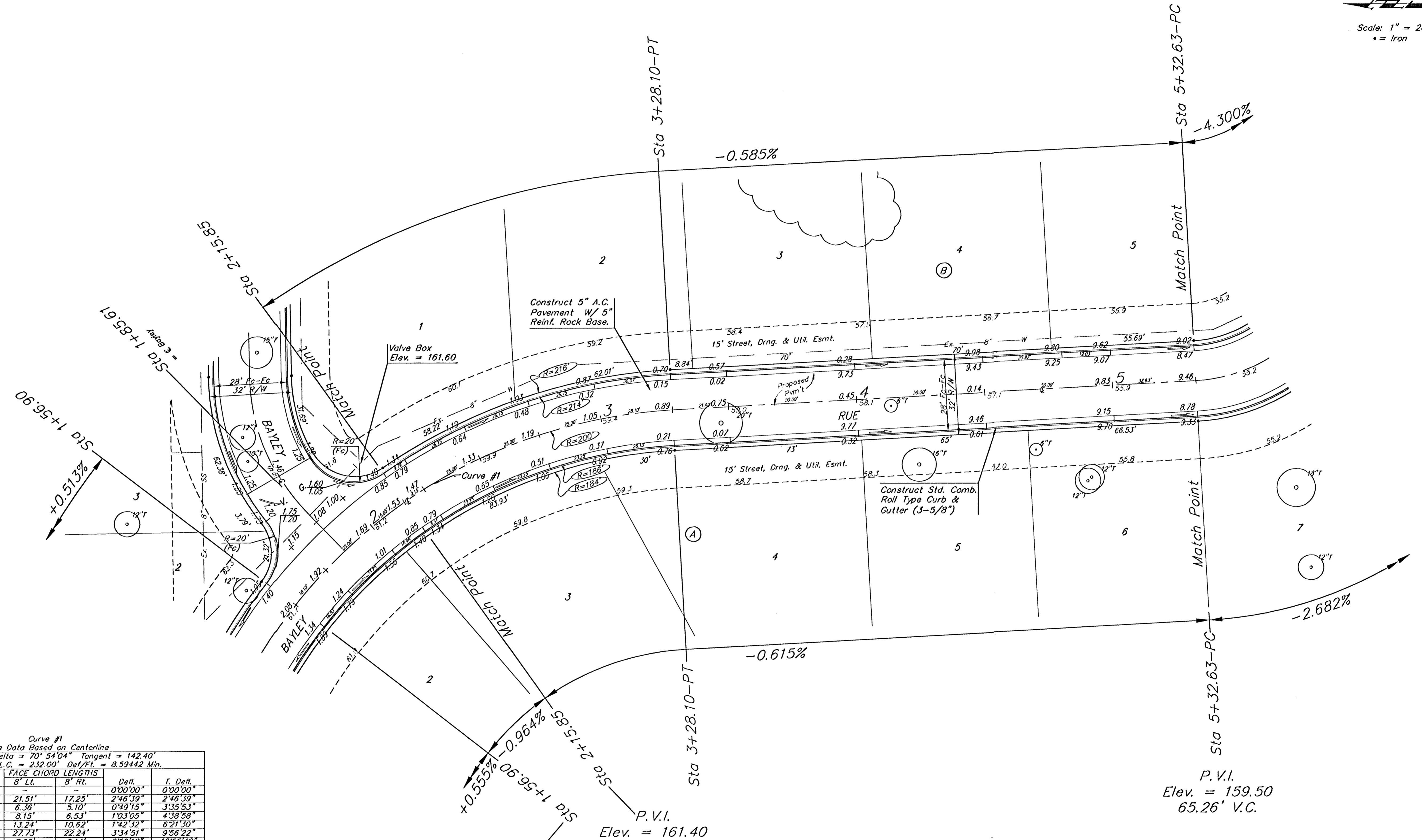


BENCHMARKS:
 BM #1: Small RR spike in NW face of PP, 5.4' NW of the most westerly corner of Lot 1, Block A, Grace Park Addition. Elev. = 158.64 City Datum
 BM #2: "□" on top of curb SE corner of Res. "G", Cedarview Addition. Elev. = 161.87 City Datum

P.V.I.
 Elev. = 159.50
 103.32' V.C.

Scale: 1" = 20'
 • = Iron



Curve #1
 Curve Data Based on Centerline
 Rad. = 200' Delta = 70° 54' 04" Tangent = 142.40'
 Arc = 247.49' L.C. = 232.00' Def/Fl. = 8.59442 Min.

Station	Arc	FACE CHORD LENGTHS		Defl.	T. Defl.
		8' LL	8' RL		
0+80.61	-	-	-	0'00'00"	0'00'00"
1+00.00	19.39'	21.51'	17.25'	2'46'39"	2'46'39"
1+05.73	5.73'	6.36'	5.10'	0'49'15"	3'35'53"
1+13.07	7.34'	8.15'	6.53'	1'03'05"	4'38'58"
1+25.00	11.93'	13.24'	10.62'	1'42'32"	6'21'30"
1+50.00	25.00'	27.73'	22.24'	3'34'51"	9'56'22"
1+75.00	8.90'	7.68'	6.14'	0'59'18"	10'55'40"
1+85.61	10.61'	11.78'	9.44'	1'31'11"	15'02'25"
2+00.00	14.39'	15.97'	12.80'	2'03'40"	17'06'05"
2+15.85	15.85'	17.59'	14.10'	2'16'13"	19'22'18"
2+25.00	9.15'	10.16'	8.14'	1'18'58"	20'40'57"
2+50.00	25.00'	27.73'	22.24'	3'34'51"	24'15'48"
2+75.00	25.00'	27.73'	22.24'	3'34'51"	27'50'40"
3+00.00	25.00'	27.73'	22.24'	3'34'51"	31'25'32"
3+25.00	25.00'	27.73'	22.24'	3'34'51"	35'00'23"
3+28.10	3.10'	3.44'	2.76'	0'28'38"	35'27'02"

P.V.I.
 Elev. = 161.40
 No V.C.

P.V.I.
 Elev. = 161.95
 33.66' V.C.

P.V.I.
 Elev. = 159.50
 65.26' V.C.

Remove trees only as necessary for street construction. Cost of removal to be incidental to lump sum bid item "Site Clearing & Restoration".

NOTE: ROLL TYPE CURB & GUTTER TO BE CONSTRUCTED ON THE PAVEMENT SHOWN ON THIS SHEET. TOP OF CURB ELEVATIONS ARE GIVEN FOR FULL HEIGHT CURB.

GRACE PARK ADDITION
RUE
 STA 2+15.85 TO STA 5+32.63

BAUGHMAN COMPANY P.A.
 ENGINEERING, SURVEYING, & PLANNING
 315-262-7271 • 315 ELLIS • WICHITA, KANSAS 67211

PROJECT NUMBER
472-83788

DESIGN DRAWN TMS APPROVED DATE 06/03 SCALE Noted

SHEET **7** OF **29**

03-05-2579 GracePark/St2