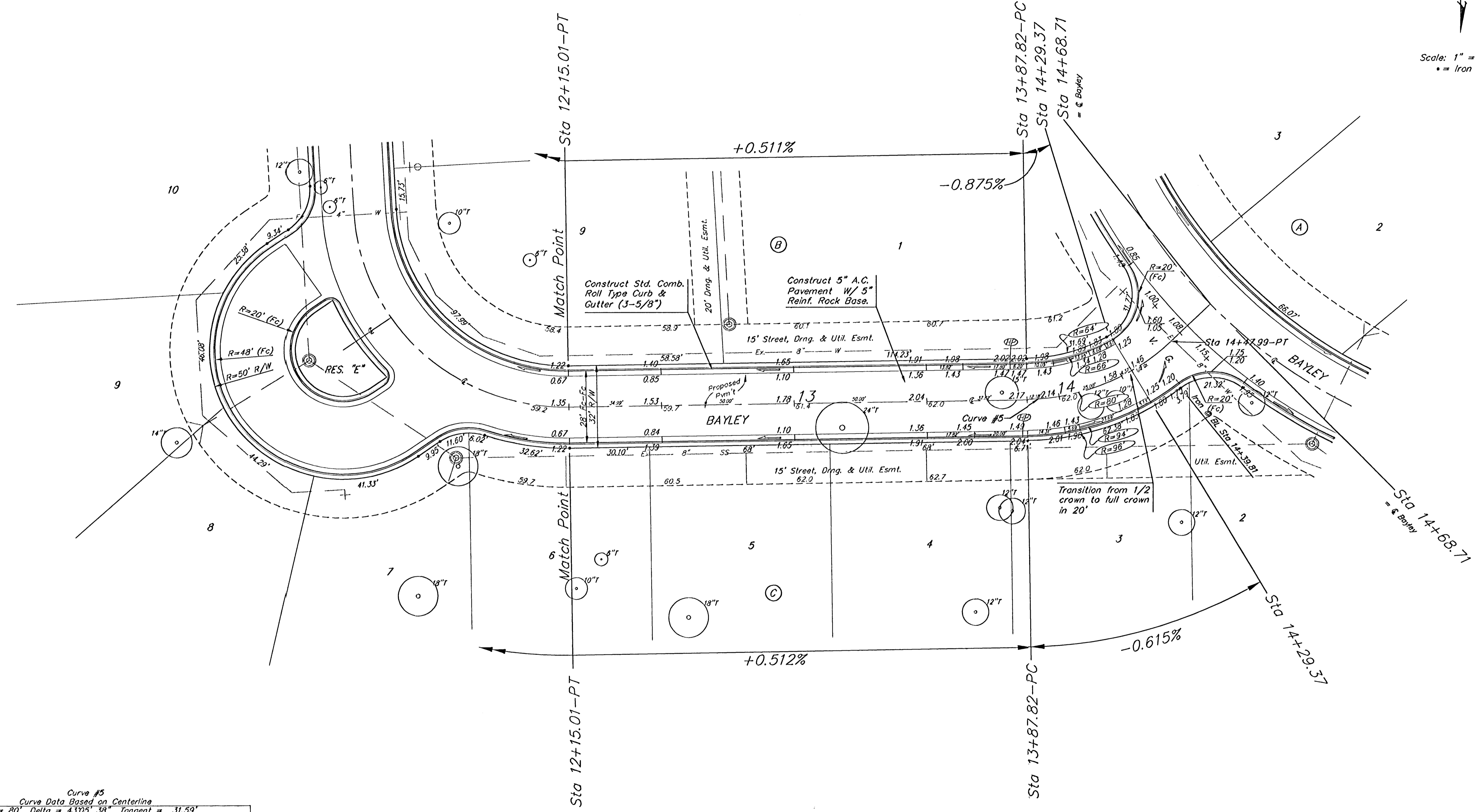


BENCHMARKS:
 BM #1: Small RR spike in NW face of PP, 5.4' NW of the most westerly corner of Lot 1, Block A, Grace Park Addition.
 Elev. = 158.64 City Datum

BM #2: "□" on top of curb SE corner of Res. "C", Cedarview Addition.
 Elev. = 161.87 City Datum

P.V.I.
 Elev. = 162.10
 48' V.C.

Scale: 1" = 20'
 • = Iron



Curve #5
 Curve Data Based on Centerline
 Rad. = 80' Delta = 43°05' 38" Tangent = 31.59'
 Arc = 60.17' L.C. = 58.76' Del/Ft. = 21.48607 Min.

Station	Arc	FACE CHORD LENGTHS		Defn.	T. Defn.
		8" Lt.	8" Rt.		
13+87.82	-	-	-	0°00'00"	0°00'00"
14+00.00	12.18'	8.82'	15.51'	4°21'42"	4°21'42"
14+25.00	25.00'	18.05'	31.75'	8°57'09"	13°18'51"
14+29.37	4.37'	3.17'	5.57'	1°33'53"	14°52'45"
14+47.99	18.62'	13.47'	23.69'	6°40'04"	21°32'49"

Remove trees only as necessary for street construction. Cost of removal to be incidental to lump sum bid item "Site Clearing & Restoration".

NOTE: ROLL TYPE CURB & GUTTER TO BE CONSTRUCTED ON THE PAVEMENT SHOWN ON THIS SHEET. TOP OF CURB ELEVATIONS ARE GIVEN FOR FULL HEIGHT CURB.

P.V.I.
 Elev. = 162.10
 40' V.C.

GRACE PARK ADDITION
BAYLEY
 STA 12+15.01 TO STA 14+88.71

BAUGHMAN COMPANY P.A.
 ENGINEERING, SURVEYING, & PLANNING
 318-282-7271 • 315 ELLIS • WICHITA, KANSAS 67211

PROJECT NUMBER
472-83798

DESIGN DRAWN APPROVED DATE SCALE
 TMS IMS 06/03 Noted

SHEET
10
 OF
29