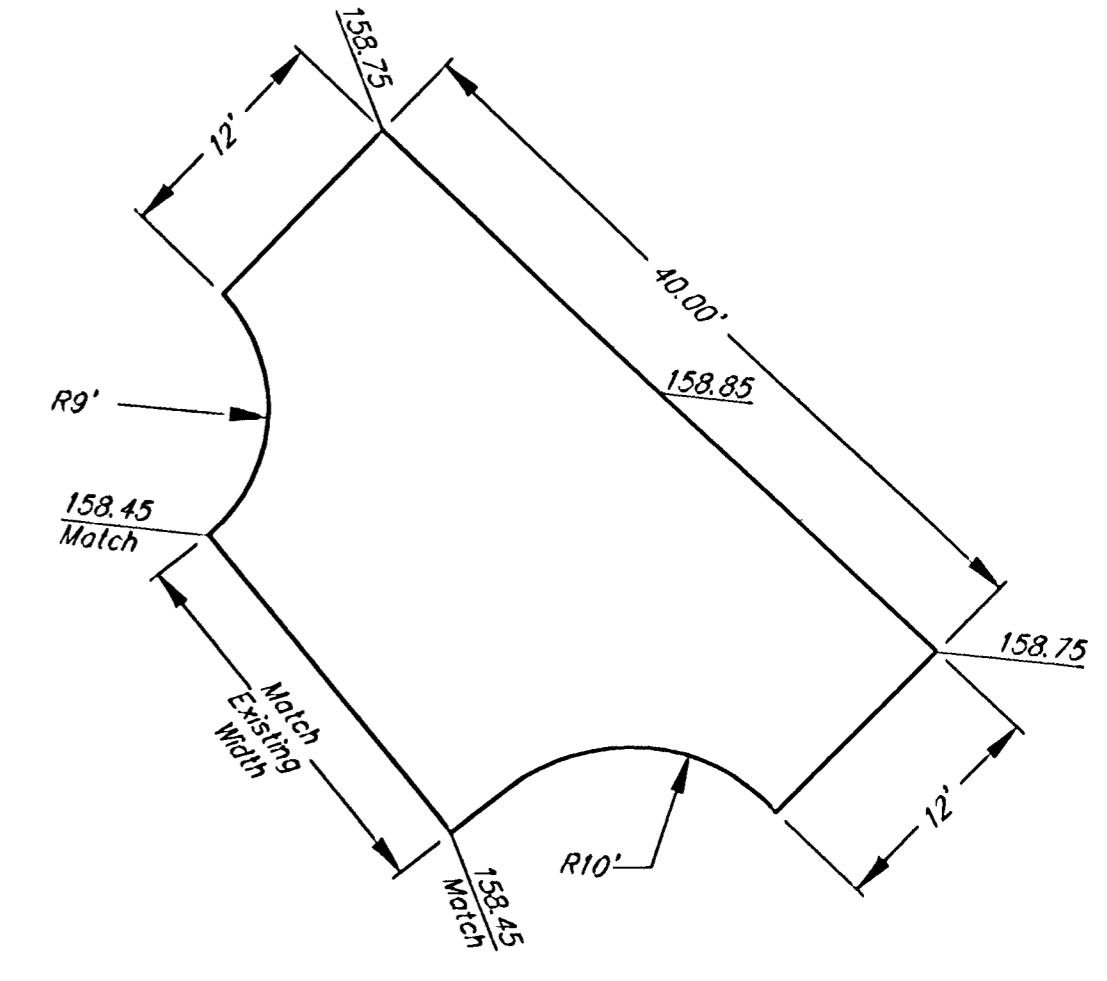
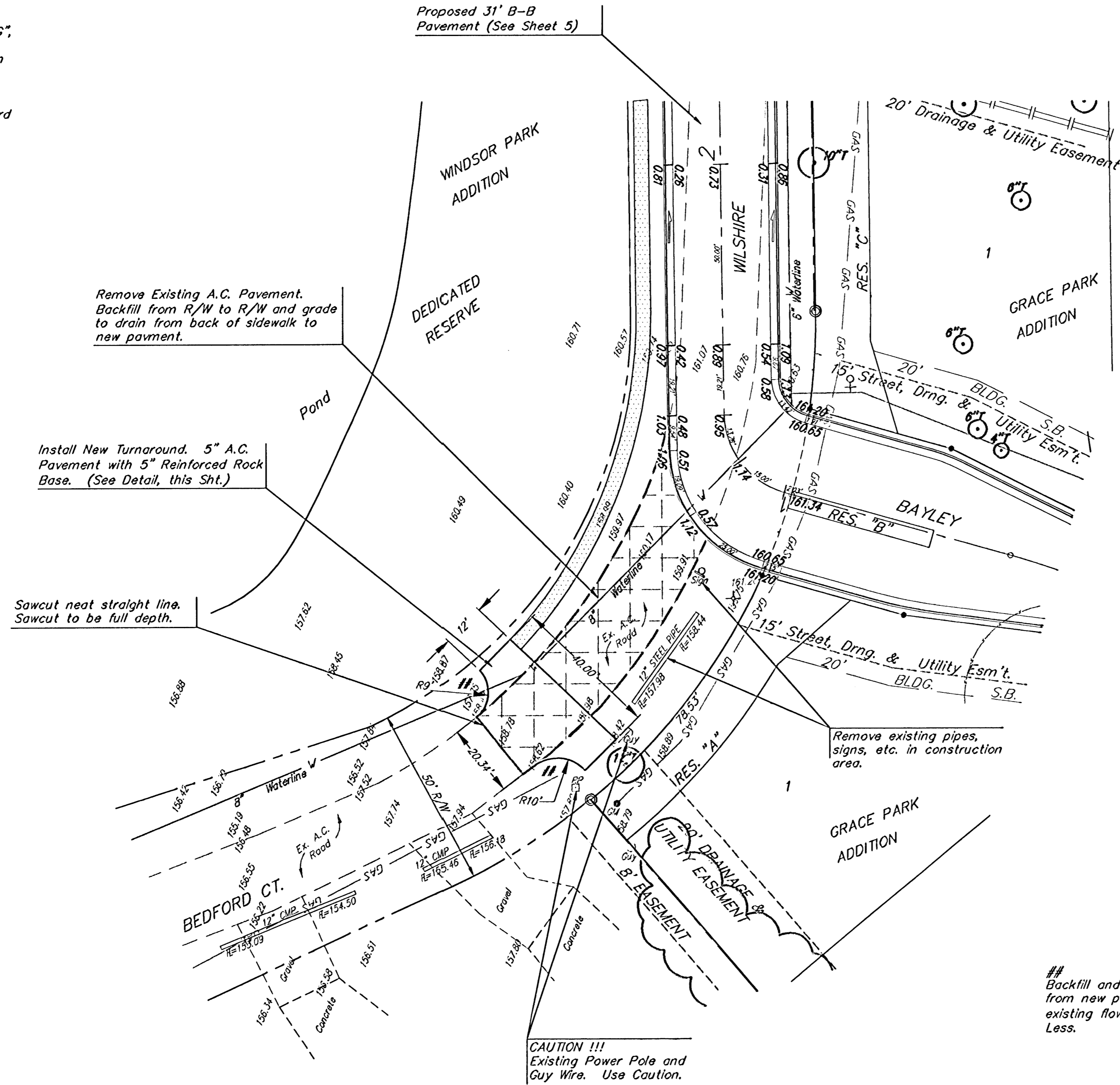


BM #1: Small RR spike in NW face of PP, 5.4' NW of the most westerly corner of Lot 1, Block A, Grace Park Addition.
Elev. = 158.64 City Datum

BM #2: "□" on top of curb SE corner of Res. "G", Cedarview Addition.
Elev. = 161.87 City Datum

BM #3: "□" Centerline face of Curb Inlet, South side of Lincoln and Bedford Ct. extended North.
Elev. = 163.78

Scale: 1" = 20'
• = Iron



Remove trees only as necessary for street construction. Cost of removal to be incidental to lump sum bid item "Site Clearing & Restoration".

GRACE PARK ADDITION
HAMMERHEAD #1
BEDFORD COURT

BAUGHMAN COMPANY P.A.
ENGINEERING, SURVEYING, & PLANNING
318-282-7271 • 315 ELLIS • WICHITA, KANSAS 67211

PROJECT NUMBER
472-83797

DESIGN MWS	DRAWN MWS	APPROVED	DATE 06/03	SCALE Noted
---------------	--------------	----------	---------------	----------------

SHEET **7** OF **13**

Grace Park/Janus 03-05-5360