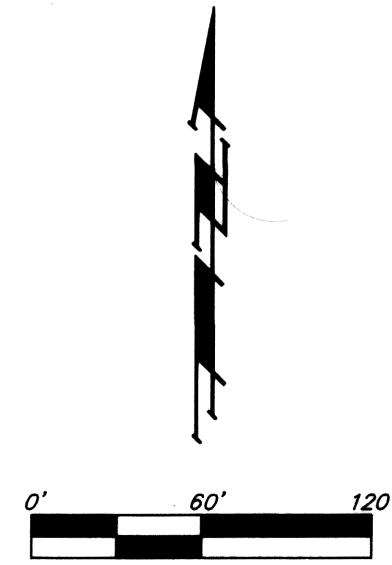


EDGE WATER 3RD ADDITION

WICHITA, SEDGWICK COUNTY, KANSAS



- = #4 REBAR W/ "BAUGHMAN" CAP (SET)
- = 1/2" IRON (FOUND)
- = #5 REBAR W/ "MUNICIPAL ENG." CAP (FOUND)
- = #4 REBAR W/ "BAUGHMAN" CAP (FOUND)

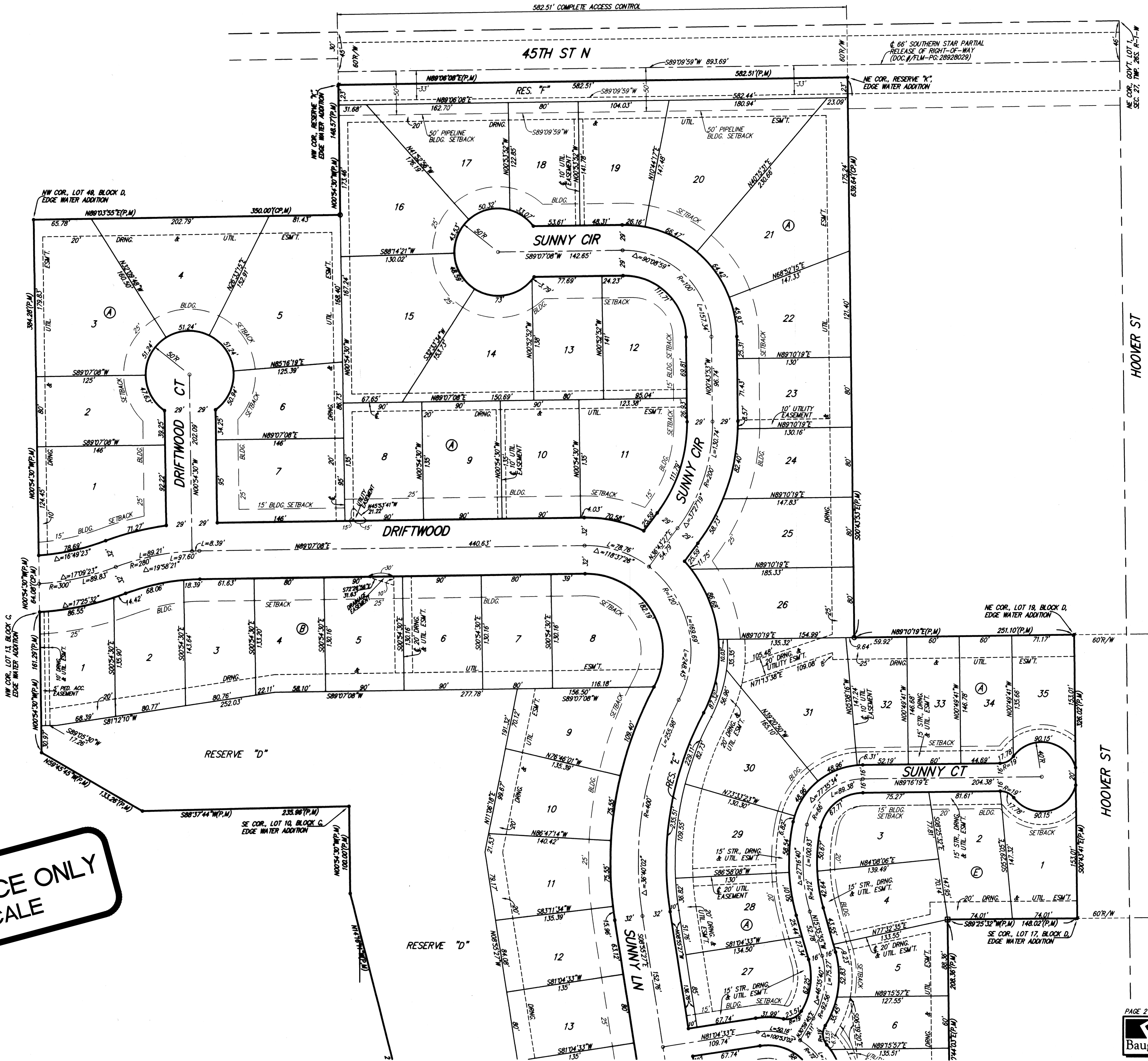
- (M) = MEASURED
- (P) = PLATTED
- (CM) = CALCULATED PER MEASURED INFO.
- (CP) = CALCULATED PER PLATTED INFO.
- (CD) = CALCULATED PER DESCRIBED INFO.

MINIMUM BUILDING PAD ELEVATIONS FOR LOWEST OPENING TO THE STRUCTURES		
LOT	BLOCK	ELEVATION NGVD29
1-7, 9-17	B	1333.1
1, 2	C	1336.0

BENCHMARK:
RAILROAD SPIKE IN WEST FACE OF POWER POLE 50' NORTHEAST OF THE SOUTHEAST CORNER OF RESERVE "C", EDGE WATER 2ND ADDITION.
ELEVATION = 1335.24 (NGVD29)

NOTE:
LOTS 27-35, BLOCK A, LOTS 1-6, BLOCK D, AND LOTS 1-10, BLOCK E, EDGE WATER 3RD ADDITION SHALL HAVE A 5 FOOT SIDE YARD BUILDING SETBACK.

FOR REFERENCE ONLY
NOT TO SCALE



NOTE:
A drainage plan has been developed for the plot and all drainage easements, rights-of-way, and reserves shall remain at established grades or as modified with the approval of the applicable City or County Engineer and unobstructed to allow for the conveyance of stormwater in accordance with the Stormwater Manual.