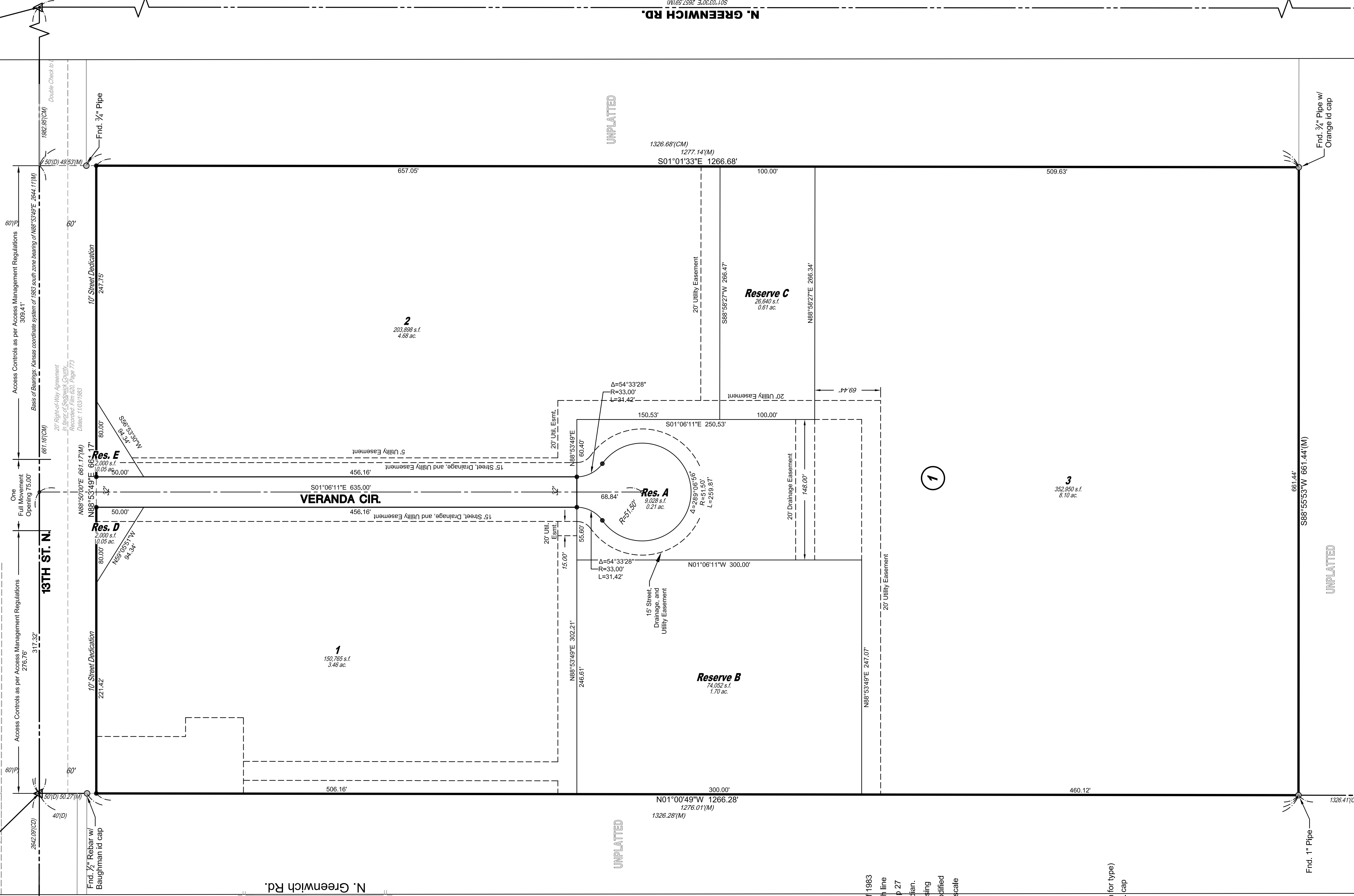
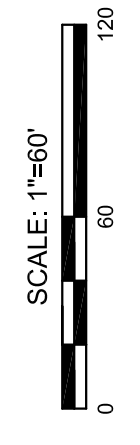
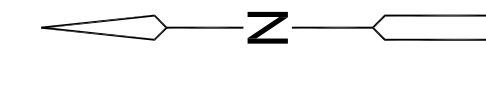
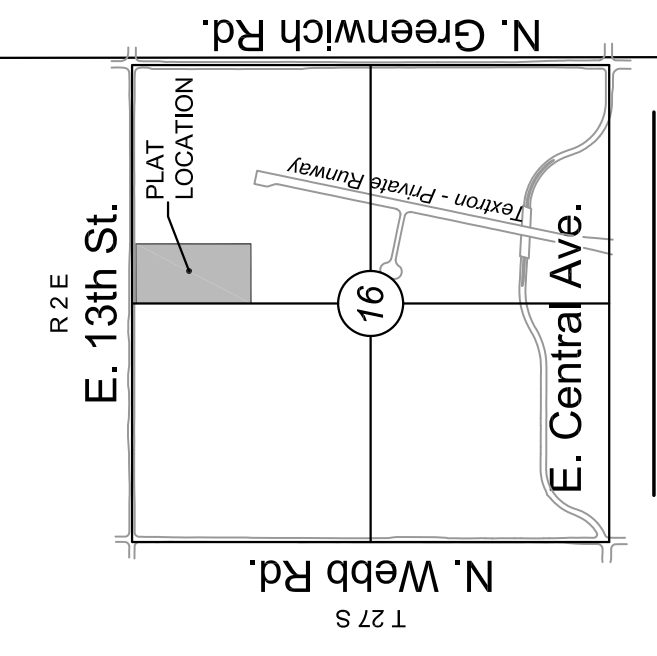


FINAL PLAT VERANDA ADDITION AN ADDITION TO WICHITA, SEDGWICK COUNTY, KANSAS

NW cor., NE 1/4, Sec. 16, T27S, R2E, 6th P.M. Frnd. 3/4" Rebar w/ Garber id cap	3	2	1	3
WATERFRONT 8TH ADDITION	GREENWICH OFFICE PARK	Reserve P	Reserve N	Reserve O
Res. A	Res. A	Reserve P	Reserve N	Reserve O



NW Cor., NW 1/4, Sec. 16, T27S, R2E, 6th P.M.



Basis of Bearings: Kansas coordinate system of 1983 south zone bearing of N88°53'49"E on the north line of the Northeast Quarter, Section 16, Township 27 South, Range 2 East of the 6th Principal Meridian. This plat is surveyed and platted on NAD83 using Kansas state plane south zone coordinates, modified to the surface, having a combined adjustment scale factor of 1.000120014.

LEGEND

- Date of Survey: September 18, 2017
- Section Corner Monument Found
- Found monument (see annotation for type)
- Set 3/4" rebar w/ MKEC CLS 39 Id. cap (or see annotation for type)
- Measured (M)
- Described (D)
- Platted (P)
- Calculated from Measurement (CM)
- Complete Access Control C.A.C.
- Lot 1
- Block 1

Center Sec. 16, T27S, R2E 6th P.M. Frnd. Stone w/ "X" cut

BENCHMARK
BM#1
Chiseled square on top of curb at north end of island in N. Veranda St. 460' north of centerline of 13th St. N. ELEV.=1387.03 NAVD 88

MINIMUM PAD ELEVATIONS LOWEST OPENINGS			
LOTS #/Subdiv	BLOCK ELEVATION NAVD 88		
1, 2, & 3	1	1387.1	

SE. cor., NE 1/4, Sec. 16, T27S, R2E, 6th P.M. Frnd. "X" Pipe in Thimble

