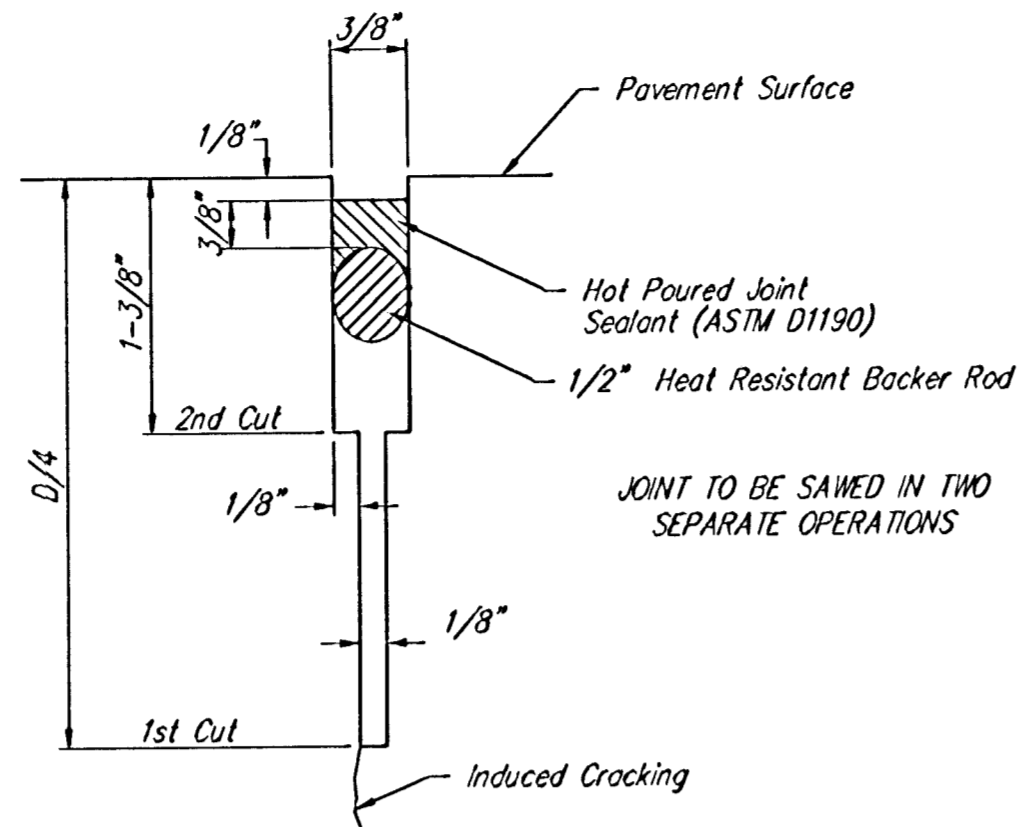
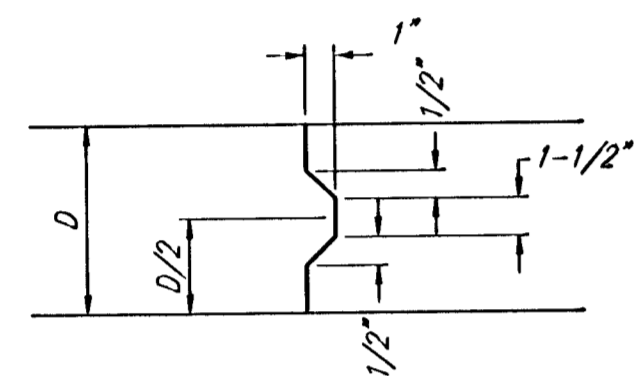


EXPANSION JOINT

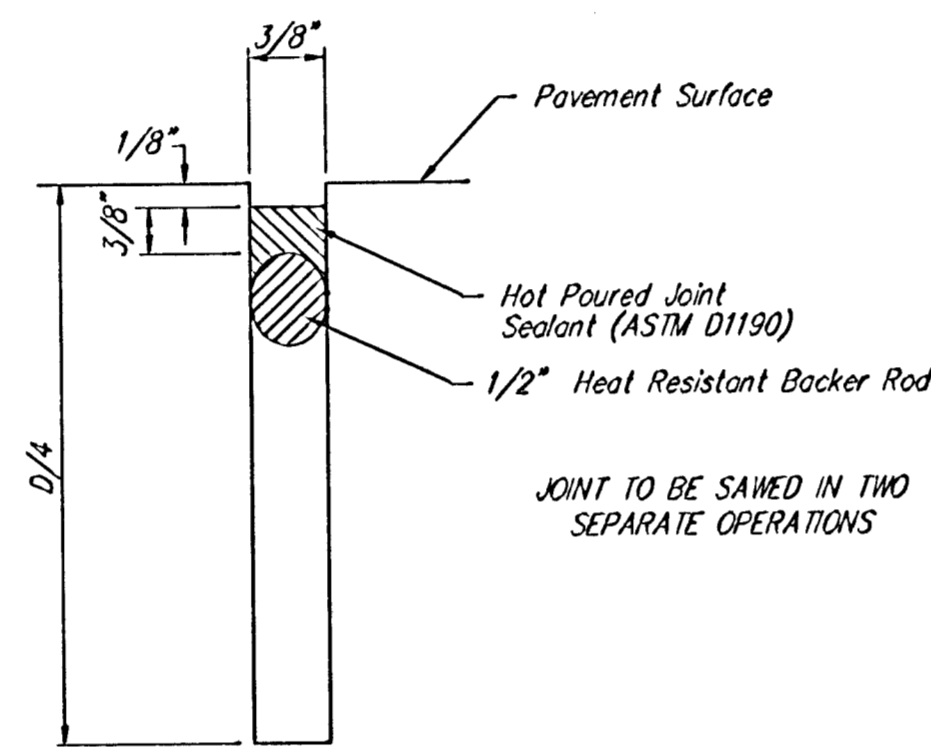
NOTE: Extra Thickness to be Subsidiary to Price of Square Yards Pavement



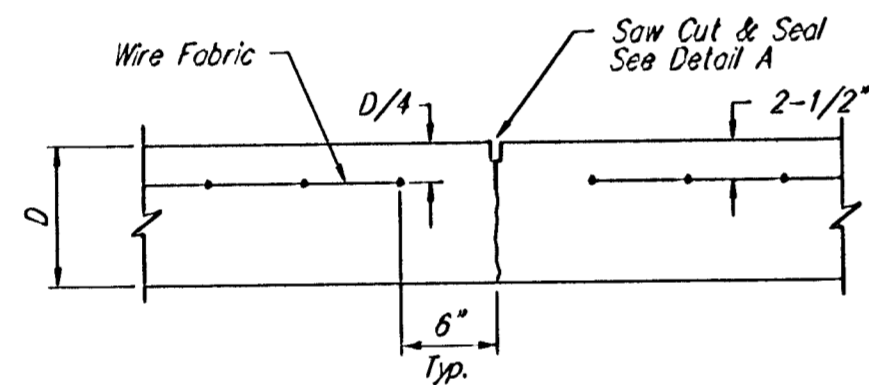
SAW JOINT DETAIL "A"



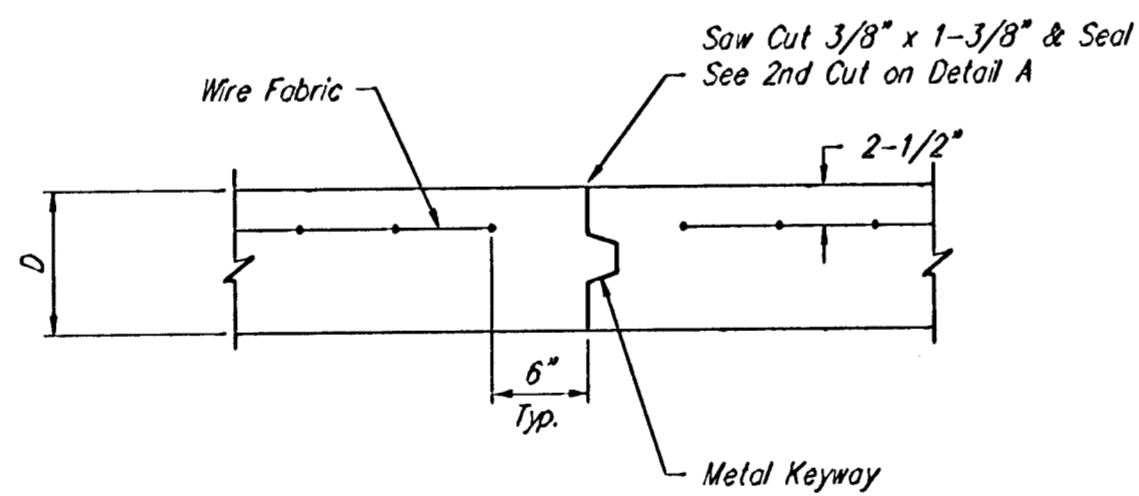
KEYWAY DETAIL



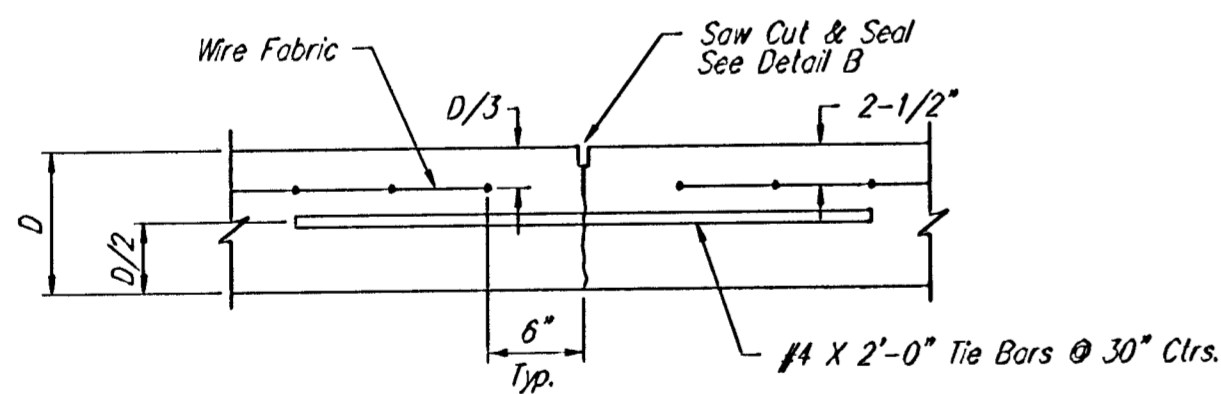
SAW JOINT DETAIL "B"



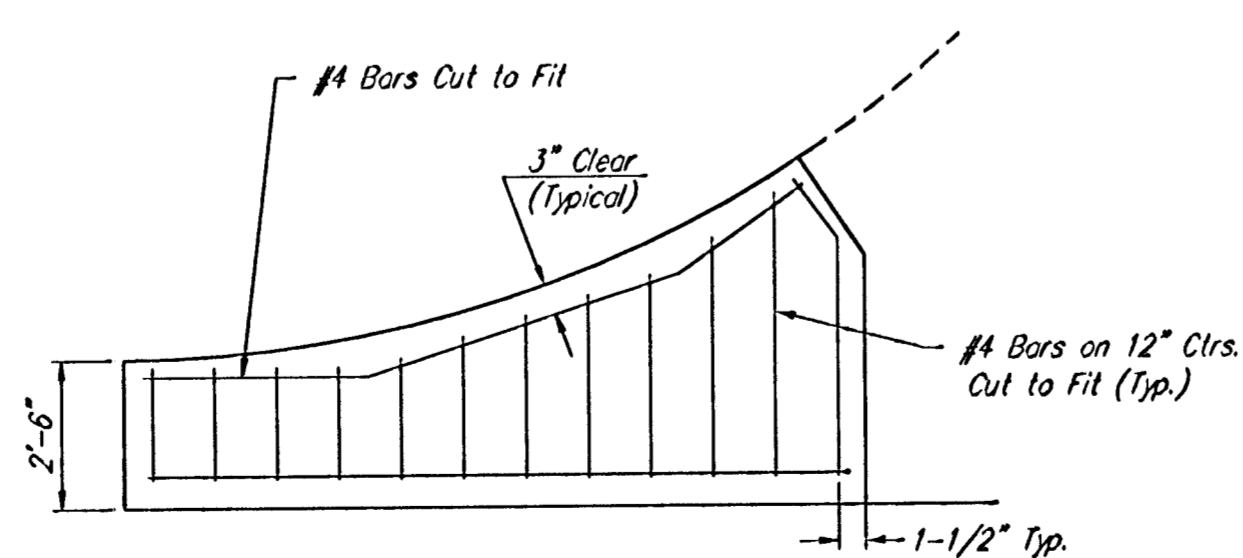
CONTRACTION JOINT DETAIL (C.J.)



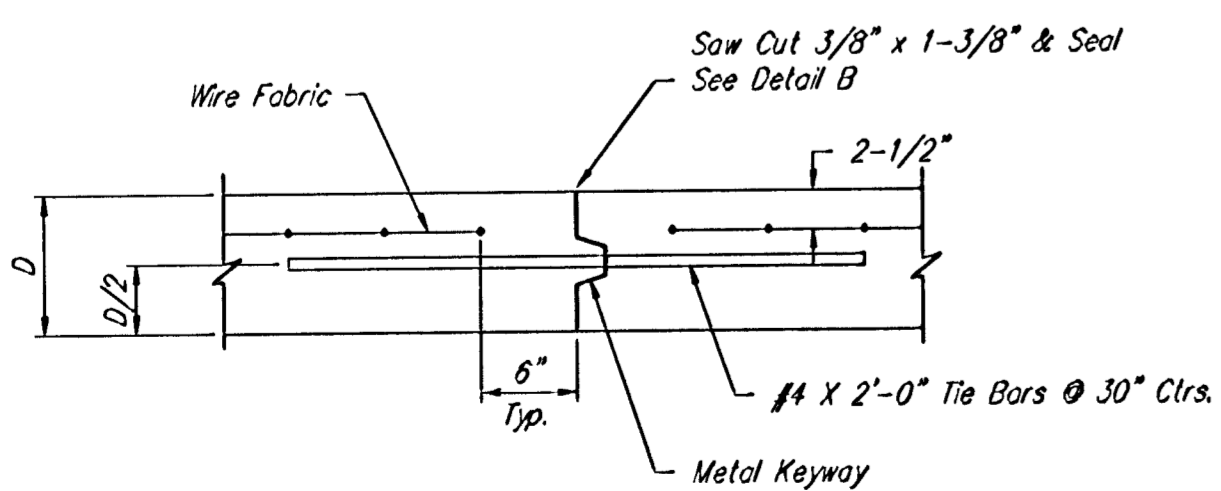
OPTIONAL CONTRACTION JOINT (CONSTRUCTION JOINT)



LONGITUDINAL JOINT DETAIL (L.J.)

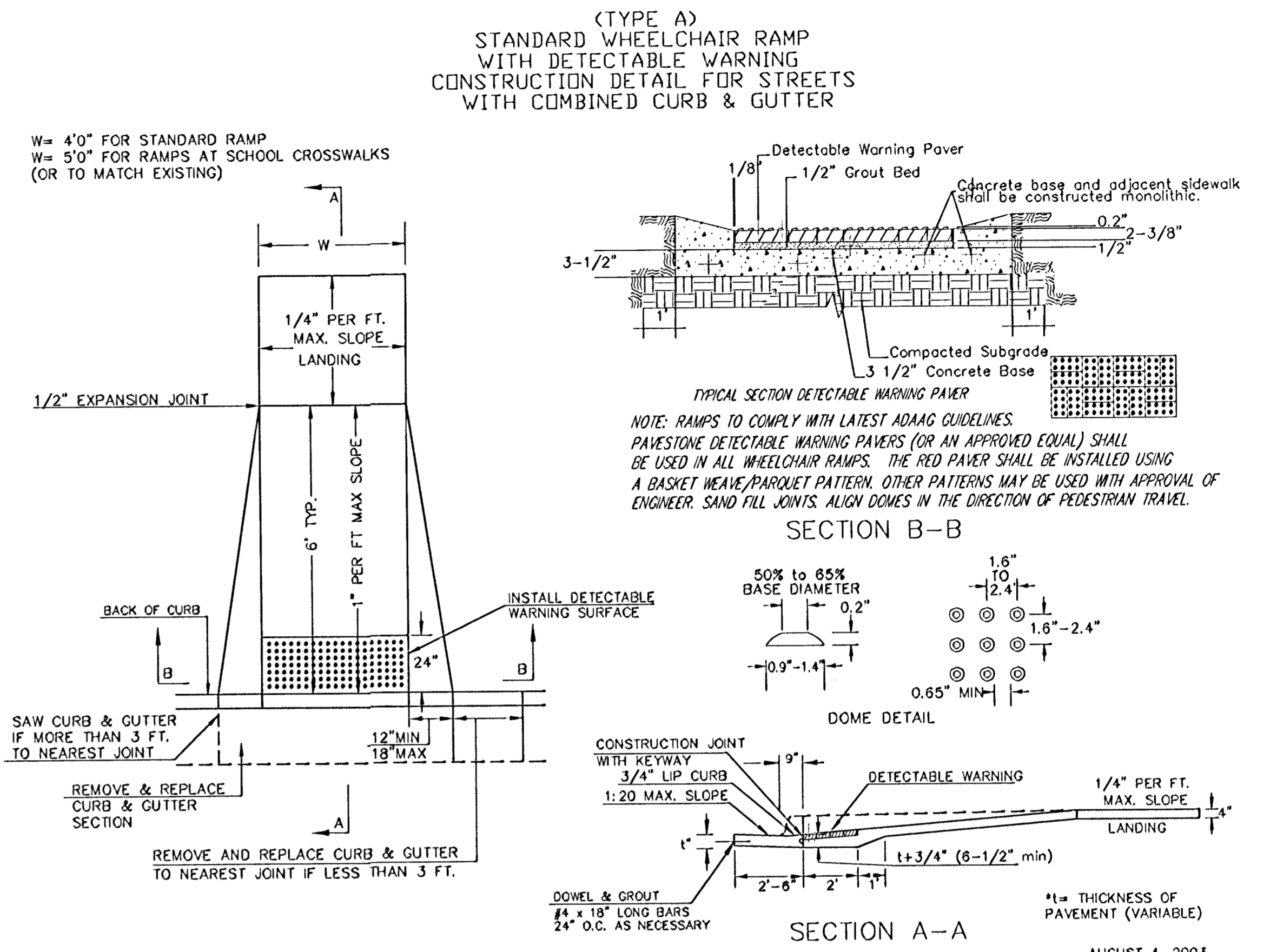


WING REINFORCING DETAIL

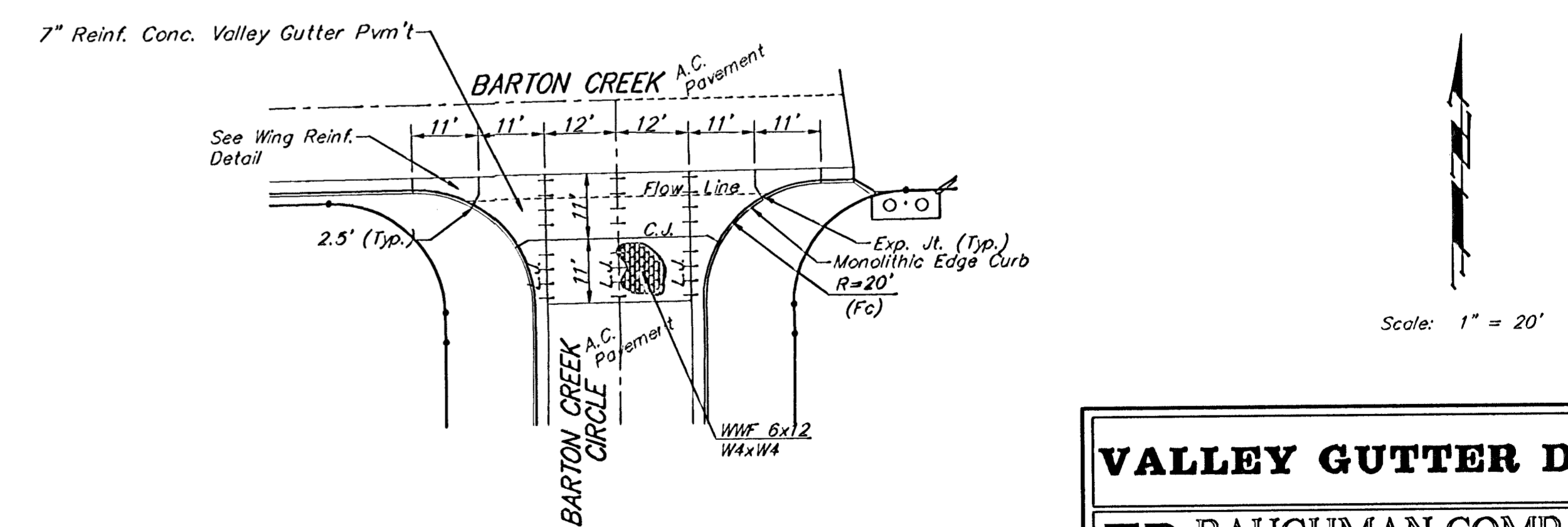


OPTIONAL LONGITUDINAL JOINT DETAIL (L.J.) (CONSTRUCTION JOINT)

NOTE: 6" X 12" WAXW4 Wire Fabric Reinforcing Shall Be Placed So That The Wires With The 6" Spacing Will Run Parallel With The Longitudinal Joints.



WHEELCHAIR RAMP DETAIL



VALLEY GUTTER DETAILS

BAUGHMAN COMPANY P.A.
ENGINEERING, SURVEYING, & PLANNING
318-282-7271 • 515 ELLIS • WICHITA, KANSAS 67211

PROJECT NUMBER
472-83833

DESIGN STAFF DRAWN STAFF APPROVED DATE 07-03 SCALE NONE SHEET 4 OF 27