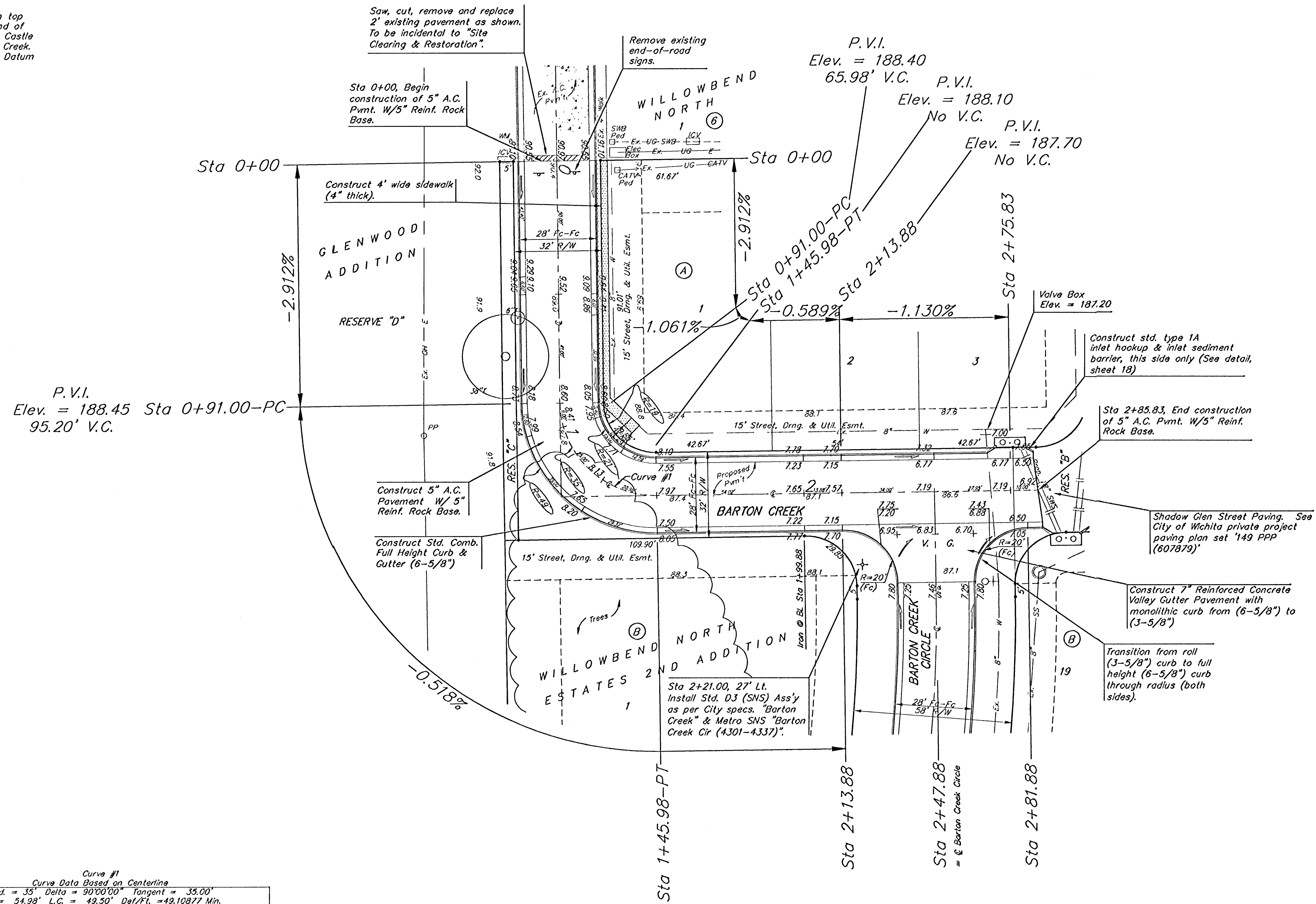


BENCHMARKS:
 BM #1: "□" Cut on top of curb, 30'± N of the NE corner of Barton Creek, Willowbend North Estates 2nd Addition.
 Elev. = 191.31 City Datum

BM #1: "□" Cut on top of curb at the E end of the NE curb return, Castle Pines St. & Barton Creek.
 Elev. = 196.79 City Datum

Scale: 1" = 20'
 • = Iron



P.V.I.
 Elev. = 188.45 Sta 0+91.00-PC
 95.20' V.C.

P.V.I.
 Elev. = 188.40
 65.98' V.C.

P.V.I.
 Elev. = 188.10
 No V.C.

P.V.I.
 Elev. = 187.70
 No V.C.

Curve #1
 Curve Data Based on Centerline
 Rad. = 35' Delta = 90°00'00" Tangent = 35.00'
 Arc = 54.98' L.C. = 49.50' Def/Fl. = 49.10877 Min.

Station	Arc	FACE CHORD LENGTHS		Del.	T. Del.
		B' Lt.	B' Rt.		
0+91.00	-	-	-	0°00'00"	0°00'00"
1+00.00	9.00'	3.33'	14.62'	7°21'59"	7°21'59"
1+25.00	25.00'	9.09'	39.85'	20°27'43"	27°49'42"
1+45.98	20.98'	7.68'	33.66'	17°10'18"	45°00'00"

WILLOWBEND NORTH ESTATES 2ND ADDITION
BARTON CREEK
 STA 0+00 TO STA 2+81.88

BAUGHMAN COMPANY P.A.
 ENGINEERING, SURVEYING, & PLANNING
 315-282-7271 • 315 ELLIS • WICHITA, KANSAS 67211

PROJECT NUMBER
472-83833

DESIGN NBW DRAW TMS APPROVED DATE 07/03 SCALE Noted

SHEET **5** OF **27**