

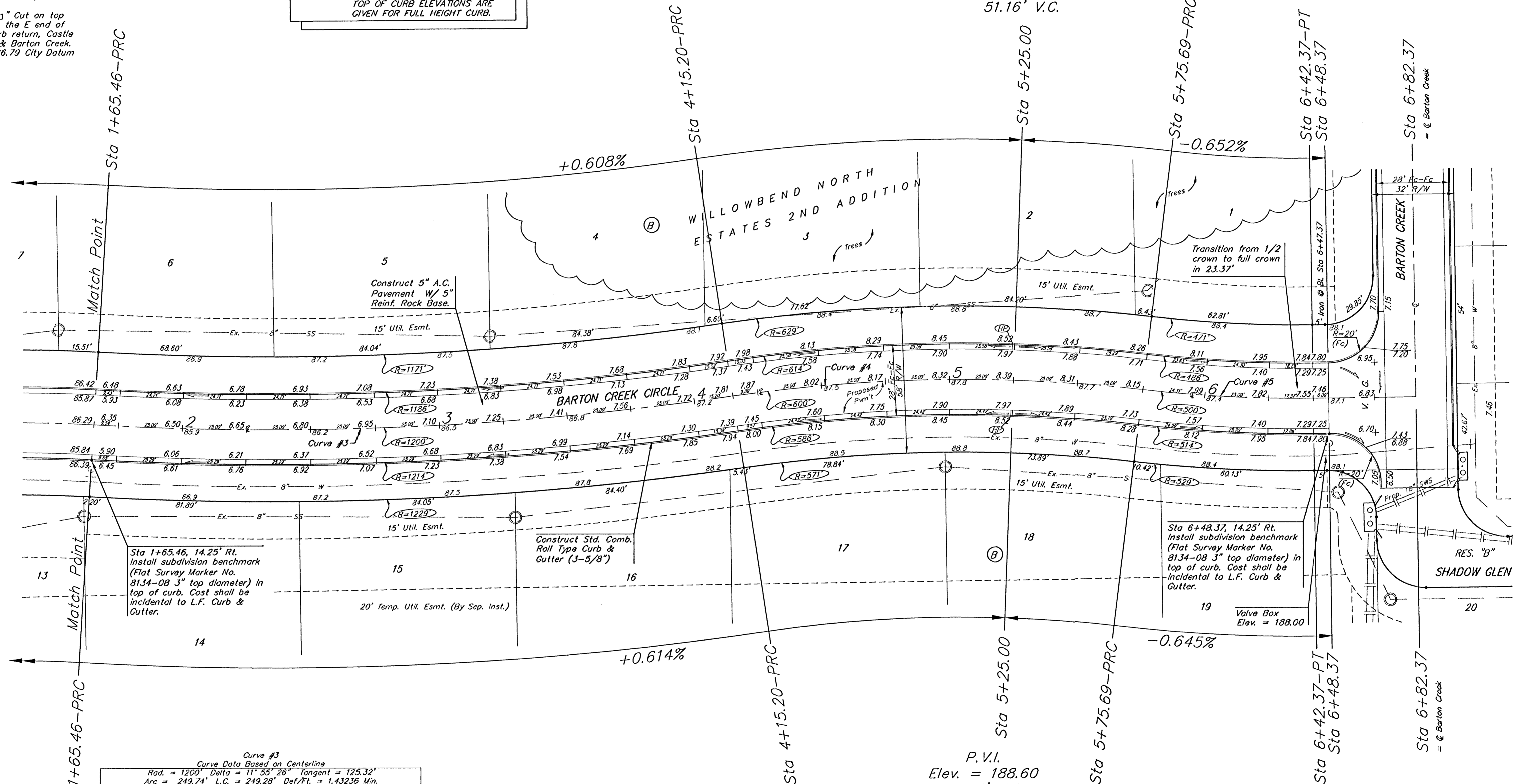
**BENCHMARKS:**  
 BM #1: "□" Cut on top of curb, 30± N of the NE corner of Barton Creek, Willowbend North Estates 2nd Addition.  
 Elev. = 191.31 City Datum

BM #1: "□" Cut on top of curb at the E end of the NE curb return, Castle Pines St. & Barton Creek.  
 Elev. = 196.79 City Datum

**NOTE:** ROLL TYPE CURB & CUTTER TO BE CONSTRUCTED ON THE PAVEMENT SHOWN ON THIS SHEET. TOP OF CURB ELEVATIONS ARE GIVEN FOR FULL HEIGHT CURB.

P.V.I.  
 Elev. = 188.60  
 51.16' V.C.

Scale: 1" = 20'  
 • = Iron



**Curve #3**  
 Curve Data Based on Centerline  
 Rad. = 1200' Delta = 11° 55' 26" Tangent = 125.32'  
 Arc = 249.74' L.C. = 249.28' Def/Ft. = 1.43236 Min.

Station	Arc	FACE CHORD LENGTHS		Defl.	T. Defl.
		8' Lt.	8' Rt.		
1+65.46	9.54'	9.36'	9.71'	0°00'00"	0°00'00"
1+75.00	25.00'	24.54'	25.46'	0°13'40"	0°13'40"
2+00.00	25.00'	24.54'	25.46'	0°35'48"	0°49'28"
2+25.00	25.00'	24.54'	25.46'	0°55'48"	1°25'17"
2+50.00	25.00'	24.54'	25.46'	0°55'48"	2°01'05"
2+75.00	25.00'	24.54'	25.46'	0°35'48"	2°36'54"
3+00.00	25.00'	24.54'	25.46'	0°35'48"	3°12'42"
3+25.00	25.00'	24.54'	25.46'	0°35'48"	3°48'31"
3+50.00	25.00'	24.54'	25.46'	0°35'48"	4°24'19"
3+75.00	25.00'	24.54'	25.46'	0°35'48"	5°00'08"
4+00.00	25.00'	24.54'	25.46'	0°35'48"	5°35'57"
4+15.20	15.20'	14.92'	15.47'	0°21'46"	5°57'43"

**Curve #4**  
 Curve Data Based on Centerline  
 Rad. = 600' Delta = 15° 19' 32" Tangent = 80.73'  
 Arc = 160.49' L.C. = 160.01' Def/Ft. = 2.86477 Min.

Station	Arc	FACE CHORD LENGTHS		Defl.	T. Defl.
		8' Lt.	8' Rt.		
4+15.20	-	-	-	0°00'00"	0°00'00"
4+25.00	9.80'	10.16'	9.44'	0°28'04"	0°28'04"
4+50.00	25.00'	25.91'	24.08'	1°11'37"	1°39'41"
4+75.00	25.00'	25.91'	24.08'	1°11'37"	2°51'19"
5+00.00	25.00'	25.91'	24.08'	1°11'37"	4°02'56"
5+25.00	25.00'	25.91'	24.08'	1°11'37"	5°14'33"
5+50.00	25.00'	25.91'	24.08'	1°11'37"	6°26'10"
5+75.69	25.69'	26.63'	24.75'	1°13'36"	7°39'46"

**Curve #5**  
 Curve Data Based on Centerline  
 Rad. = 500' Delta = 7° 38' 27" Tangent = 33.39'  
 Arc = 66.68' L.C. = 66.63' Def/Ft. = 3.43789 Min.

Station	Arc	FACE CHORD LENGTHS		Defl.	T. Defl.
		8' Lt.	8' Rt.		
5+75.69	-	-	-	0°00'00"	0°00'00"
6+00.00	24.31'	23.24'	25.38'	1°23'34"	1°23'34"
6+25.00	25.00'	23.90'	26.10'	1°25'56"	2°49'31"
6+42.37	17.37'	18.60'	18.13'	0°59'43"	3°49'13"

**WILLOWBEND NORTH ESTATES 2ND ADDITION**  
**BARTON CREEK CIRCLE**  
 STA 1+65.46 TO STA 6+82.37

**BAUGHMAN COMPANY P.A.**  
 ENGINEERING, SURVEYING, & PLANNING  
 315-252-7271 • 315 ELLIS • WICHITA, KANSAS 67211

PROJECT NUMBER: **472-83893**

DESIGN: NBW    DRAWN: TMS    APPROVED: [Signature]    DATE: 07/03    SCALE: Noted

SHEET **7** OF **27**