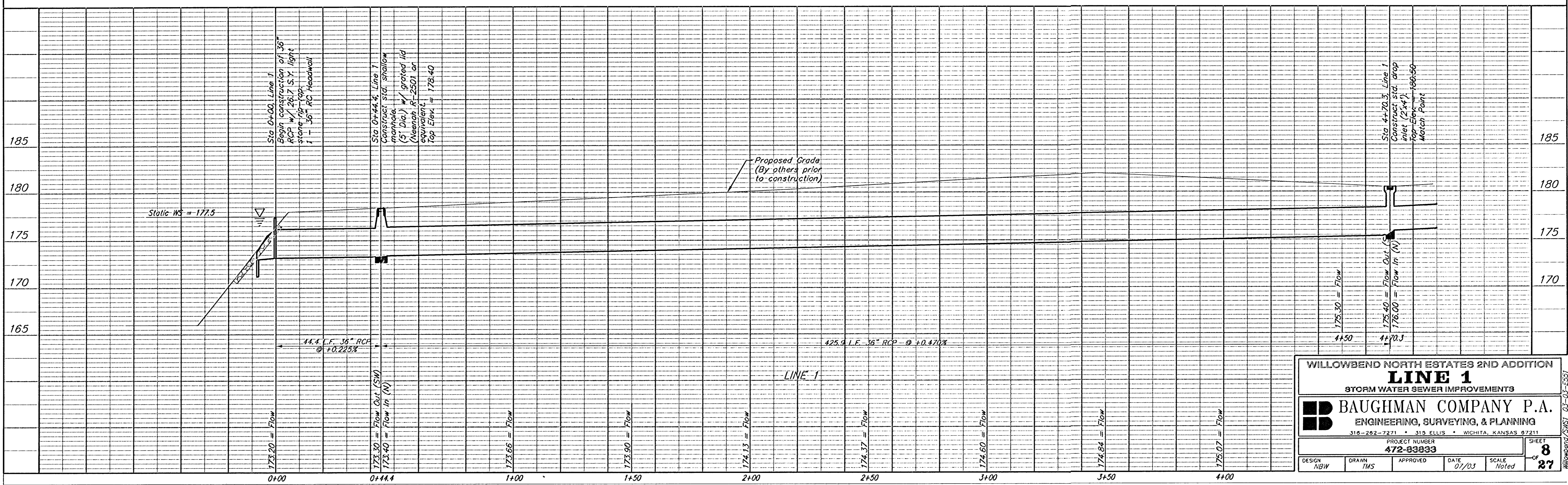
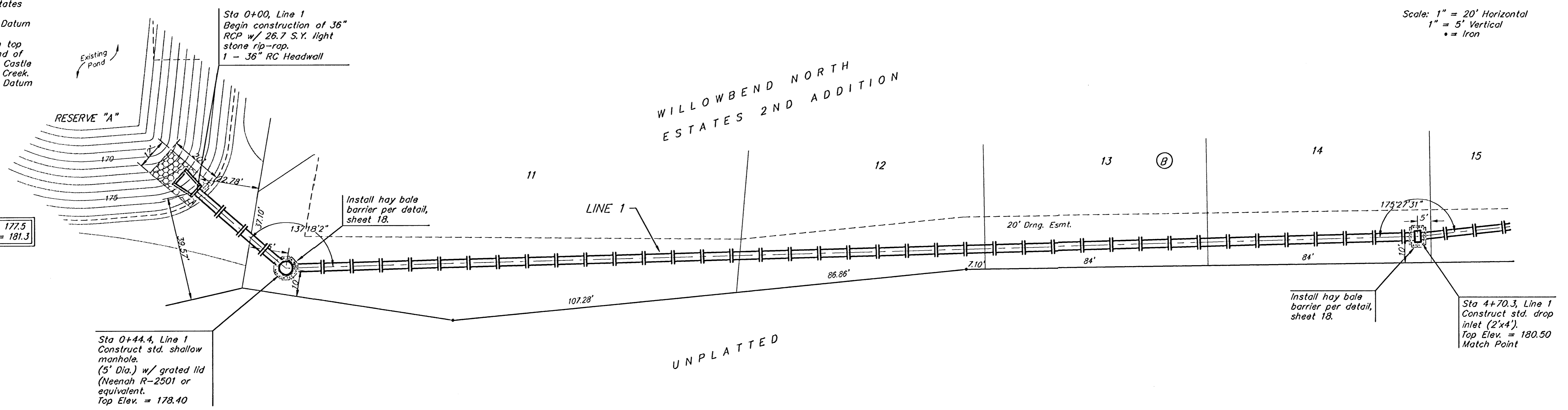


BENCHMARKS:
 BM #1: "□" Cut on top of curb, 30'± N of the NE corner of Barton Creek, Willowbend North Estates 2nd Addition.
 Elev. = 191.31 City Datum
 BM #1: "□" Cut on top of curb at the E end of the NE curb return, Castle Pines St. & Barton Creek.
 Elev. = 196.79 City Datum

Scale: 1" = 20' Horizontal
 1" = 5' Vertical
 • = Iron



WILLOWBEND NORTH ESTATES 2ND ADDITION
LINE 1
 STORM WATER SEWER IMPROVEMENTS

BAUGHMAN COMPANY P.A.
 ENGINEERING, SURVEYING, & PLANNING
 315-282-7271 • 315 ELLIS • WICHITA, KANSAS 67211

PROJECT NUMBER: **472-83833**

DESIGN: NBW | DRAWN: TMS | APPROVED: [Signature] | DATE: 07/03 | SCALE: Noted

SHEET **8** OF **27**