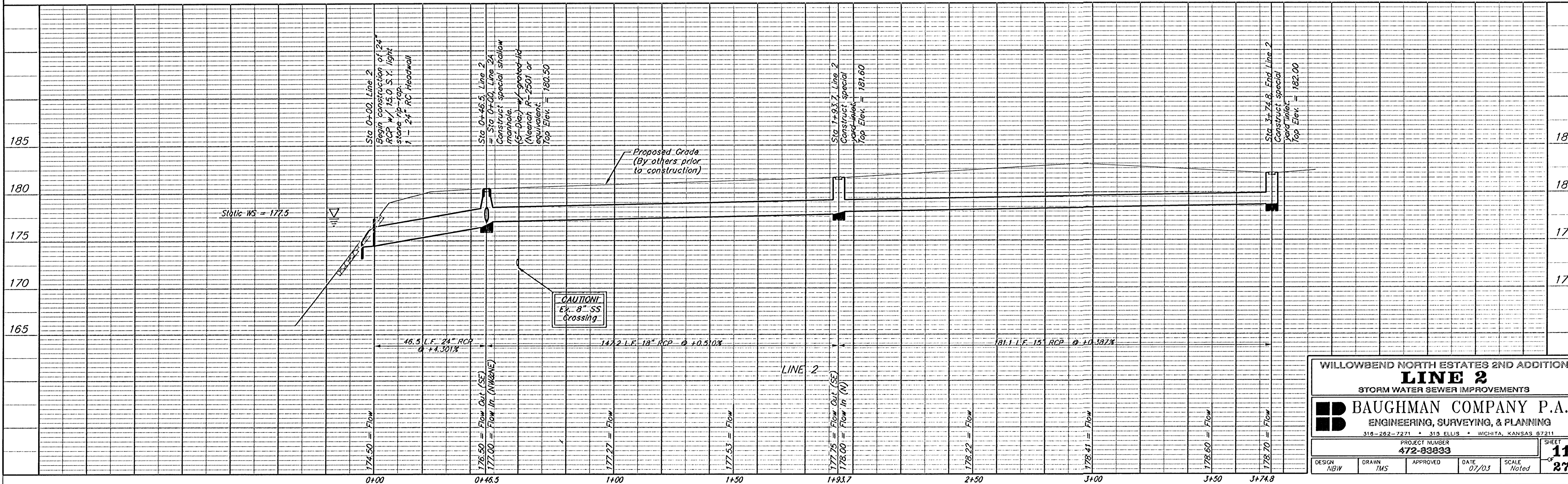
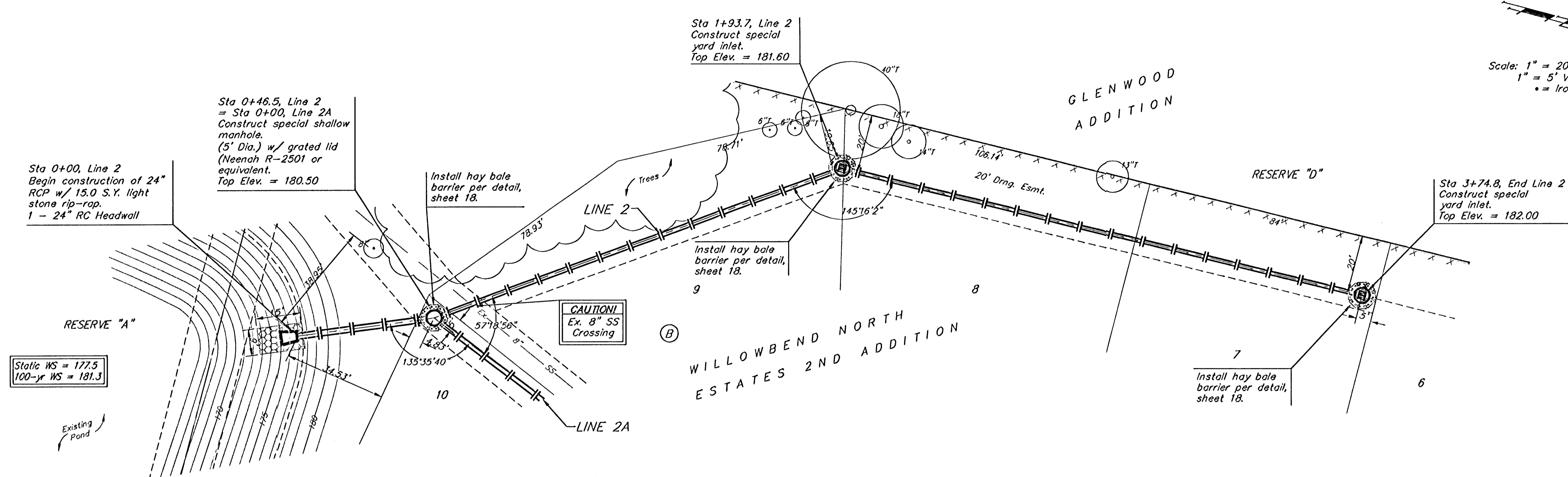


**BENCHMARKS:**  
 BM #1: "□" Cut on top of curb, 30'± N of the NE corner of Barton Creek, Willowbend North Estates 2nd Addition.  
 Elev. = 191.31 City Datum

BM #1: "□" Cut on top of curb at the E end of the NE curb return, Castle Pines St. & Barton Creek.  
 Elev. = 196.79 City Datum

Scale: 1" = 20' Horizontal  
 1" = 5' Vertical  
 • = Iron



WILLOWBEND NORTH ESTATES 2ND ADDITION  
**LINE 2**  
 STORM WATER SEWER IMPROVEMENTS

**BAUGHMAN COMPANY P.A.**  
 ENGINEERING, SURVEYING, & PLANNING  
 316-262-7271 • 315 ELLIS • WICHITA, KANSAS 67211

PROJECT NUMBER: 472-83833  
 SHEET: 11 OF 27

DESIGN: NBW	DRAWN: IMS	APPROVED:	DATE: 07/03	SCALE: Noted
-------------	------------	-----------	-------------	--------------