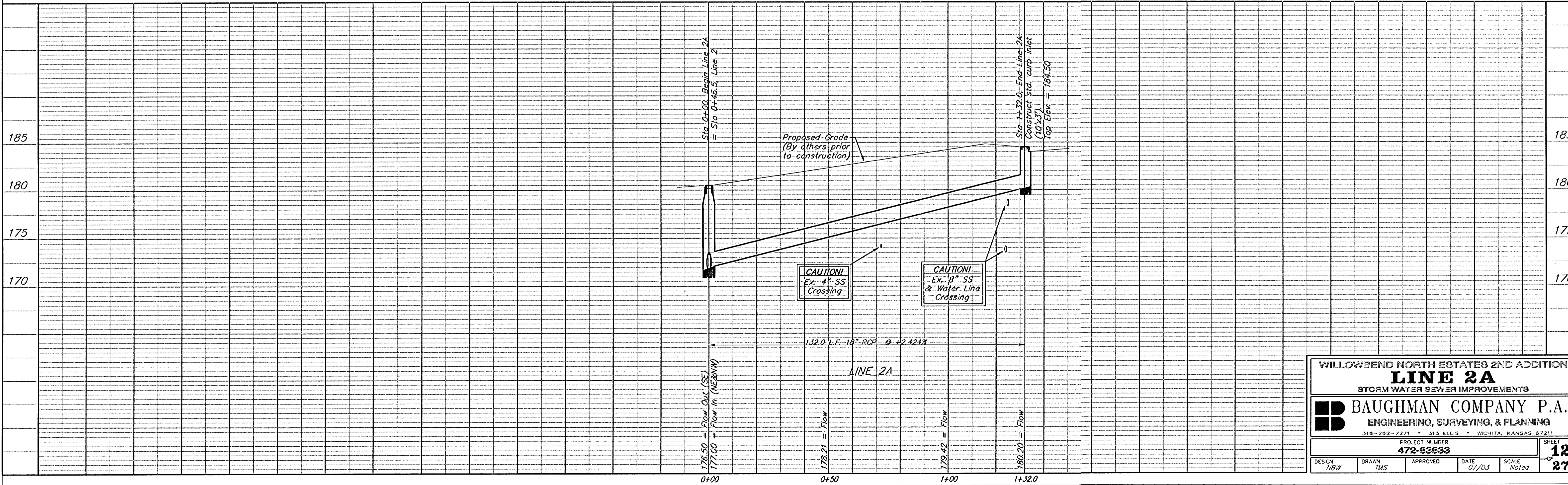
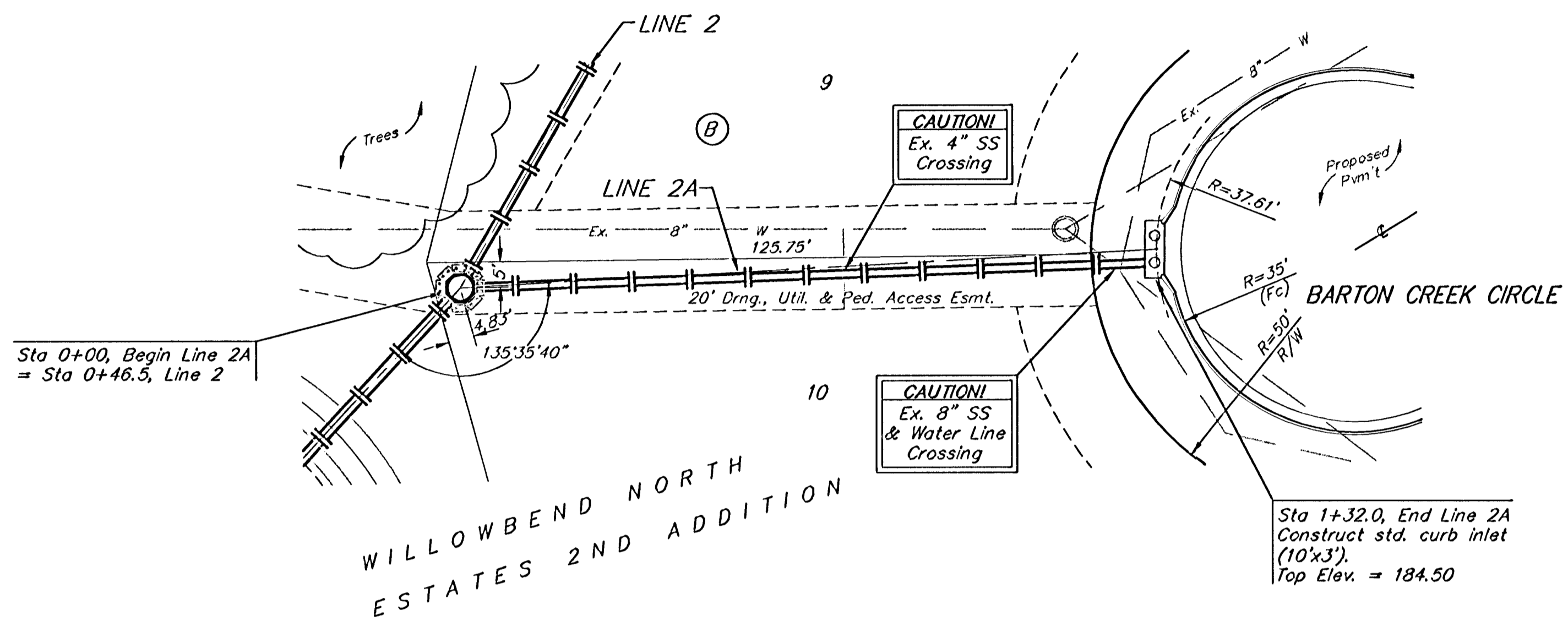


BENCHMARKS:
 BM #1: "□" Cut on top of curb, 30'± N of the NE corner of Barton Creek, Willowbend North Estates 2nd Addition.
 Elev. = 191.31 City Datum

BM #1: "□" Cut on top of curb at the E end of the NE curb return, Castle Pines St. & Barton Creek.
 Elev. = 196.79 City Datum

Scale: 1" = 20' Horizontal
 1" = 5' Vertical
 • = Iron



WILLOWBEND NORTH ESTATES 2ND ADDITION
LINE 2A
 STORM WATER SEWER IMPROVEMENTS

BAUGHMAN COMPANY P.A.
 ENGINEERING, SURVEYING, & PLANNING
 315-282-7271 • 315 ELLIS • WICHITA, KANSAS 67211

PROJECT NUMBER
472-83833

DESIGN: NBW DRAWN: TMS APPROVED: DATE: 07/03 SCALE: Noted

SHEET
12
 OF
27

Willowbend/SWS 03-03-ES01