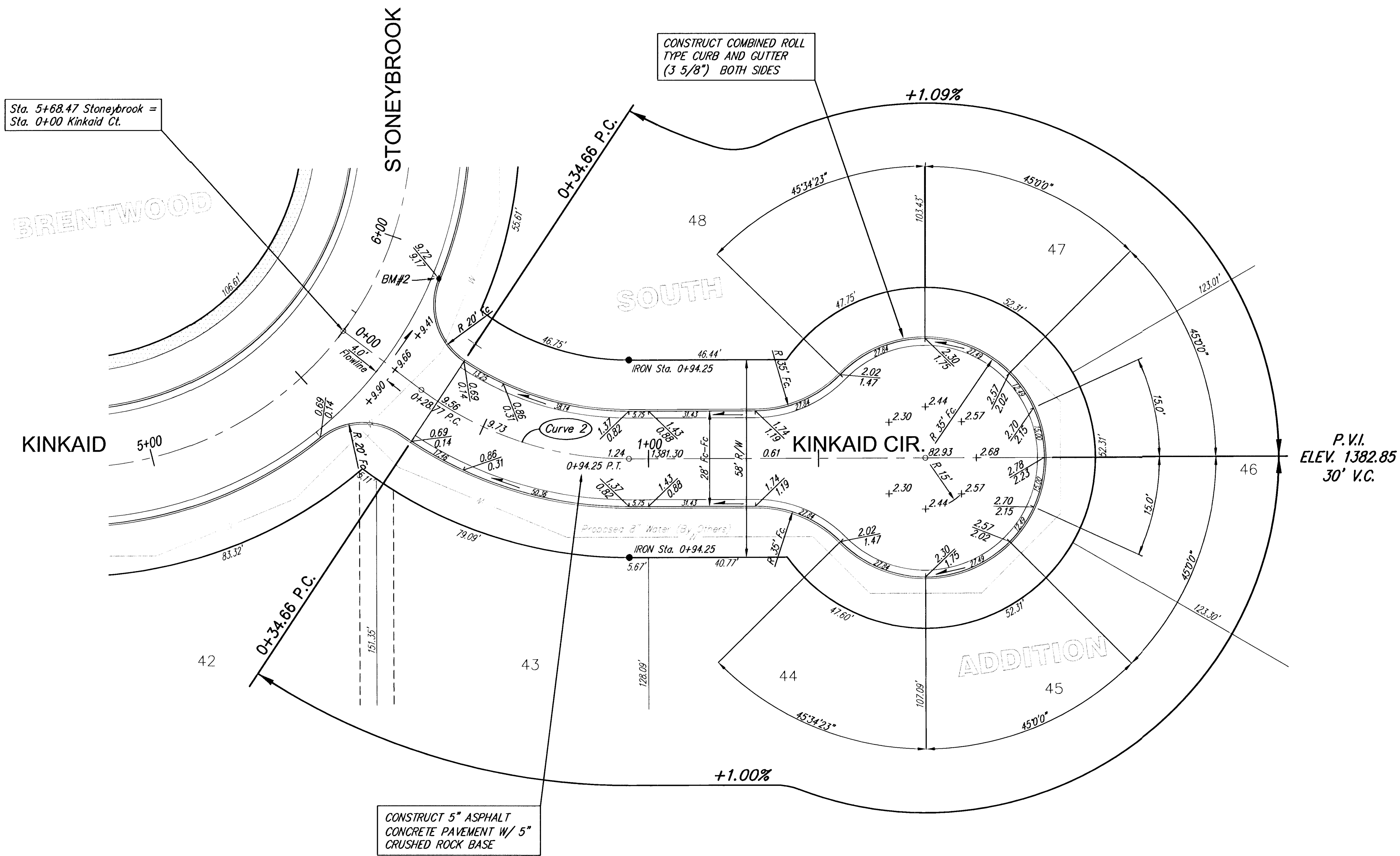


Subdivision Bench Marks

No.	Street and Station	From CL	Description	Elevation
2	Stoneybrook, Sta. 5+93.64	17.0' Rt.	N.E. End of Curb Return Intersection of Stoneybrook and Kinkaid Ct.	

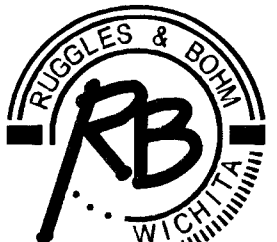
Curve 2

Curve Data Based on Centerline					
Rad. = 101.39' Delta = 37°00'00" Tangent = 33.92'					
Arc = 65.47' L.C. = 64.34' Def./Pt. = 16.95433 Min.					
		FACE CHORD LENGTHS		Defl.	T. Defl.
Station	Arc	8 Lt.	8 Rt.		
0+28.77	-	-	-	0°00'00"	0°00'00"
0+50.00	21.23'	16.59'	25.79'	5°59'56"	5°59'56"
0+75.00	25.00'	19.53'	30.35'	7°03'51"	13°03'48"
0+94.25	19.25'	15.05'	23.39'	5°26'22"	18°30'10"



SCALE 1" = 20'
IRON = •

NOTE: ROLL TYPE CURB AND GUTTER TO BE CONSTRUCTED ALONG PAVEMENT DEPICTED ON THIS SHEET

Brentwood South Addition, Paving Improvements Kinkaid Circle WICHITA, KANSAS			
	Ruggles & Bohm, P.A. Engineering, Surveying, Land Planning		DESIGN: KWL DRAWN: RA REVIEW:
	924 North Main Wichita, Kansas 67203 www.rbkansas.com		(316) 264-8008 (316) 264-4621 fax E-mail: info@rbkansas.com
DRAWING FILE: paving {KINKAID CT}	PROJECT NUMBER: 472-83445	DATE: June 23, 2003	SHEET: 6 OF 36