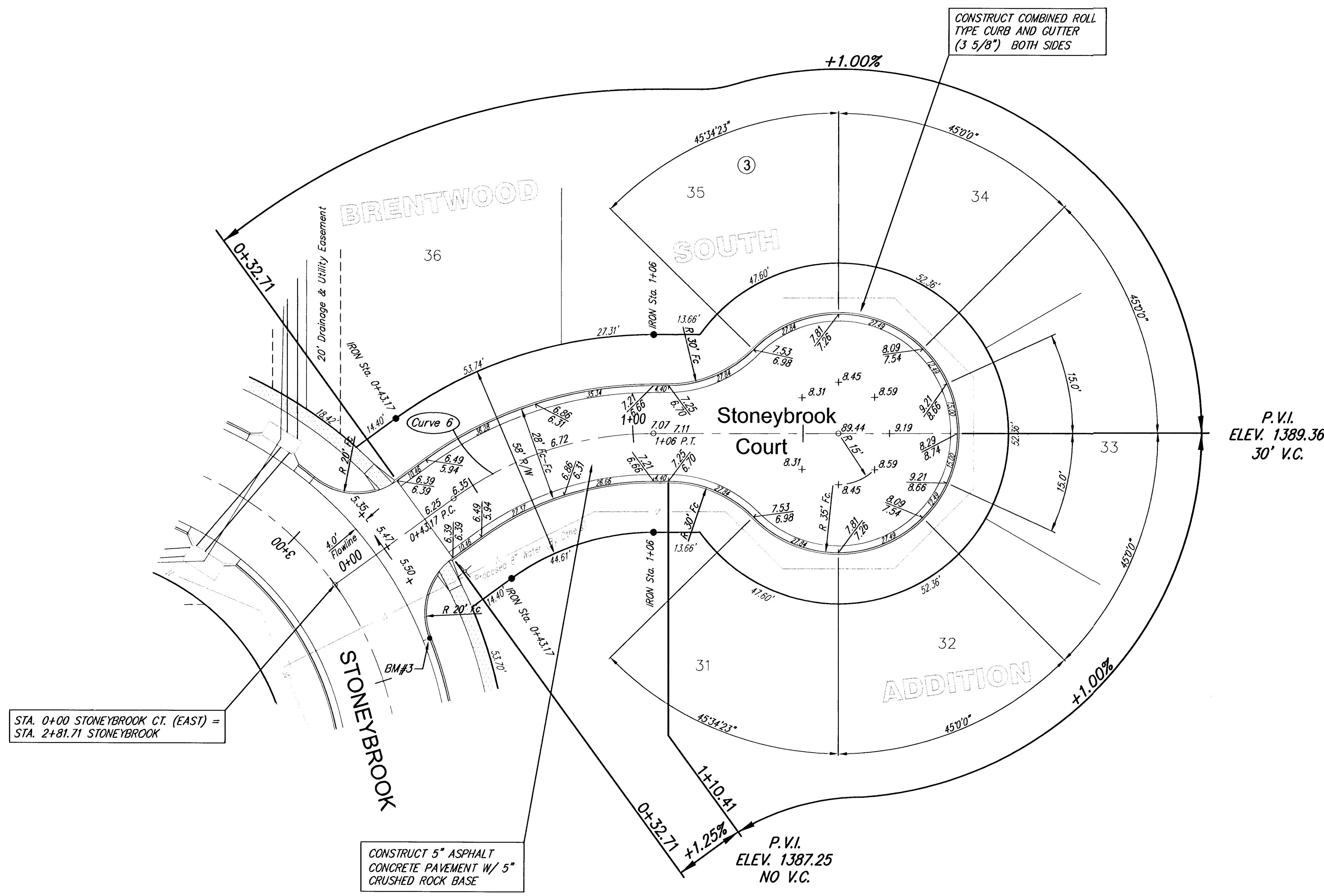


Curve 6
Curve Data Based on Centerline
Rad. = 100' Delta = 36°00'00" Tangent = 32.49'
Arc = 62.83' L.C. = 61.80' Def/Ft. = 17.18924 Min.

Station	Arc	FACE CHORD LENGTHS			
		8 Lt.	8 Rt.	Def.	T. Def.
0+43.17	-	-	-	0°00'00"	0°00'00"
0+50.00	6.83'	8.33'	5.33'	1°57'24"	1°57'24"
0+75.00	25.00'	30.42'	19.45'	7°09'44"	9°07'08"
1+08.00	31.00'	37.67'	24.08'	8°52'52"	17°59'80"



STA. 0+00 STONEYBROOK CT. (EAST) =
STA. 2+81.71 STONEYBROOK

CONSTRUCT 5" ASPHALT
CONCRETE PAVEMENT W/ 5"
CRUSHED ROCK BASE

CONSTRUCT COMBINED ROLL
TYPE CURB AND GUTTER
(3 5/8") BOTH SIDES

P.V.I.
ELEV. 1389.36
30' V.C.

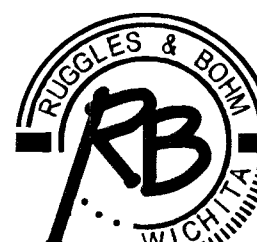
P.V.I.
ELEV. 1387.25
NO V.C.



SCALE 1" = 20'
IRON = •

NOTE: ROLL TYPE CURB AND
GUTTER TO BE CONSTRUCTED ALONG
PAVEMENT DEPICTED ON THIS SHEET

**Brentwood South Addition, Paving Improvements
Stoneybrook Court (East)
WICHITA, KANSAS**



Ruggles & Bohm, P.A.
Engineering, Surveying, Land Planning
924 North Main
Wichita, Kansas 67203
www.rbkansas.com

DESIGN: KWL
DRAWN: RA
REVIEW: RA
UTILITY: RA

PROJECT NUMBER: 472-83445
DATE: June 23, 2003

FR. JOB 23AE
SHEET 10
OF 36