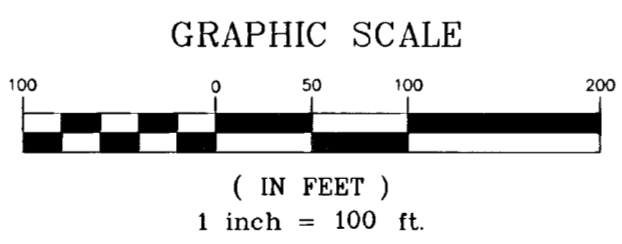
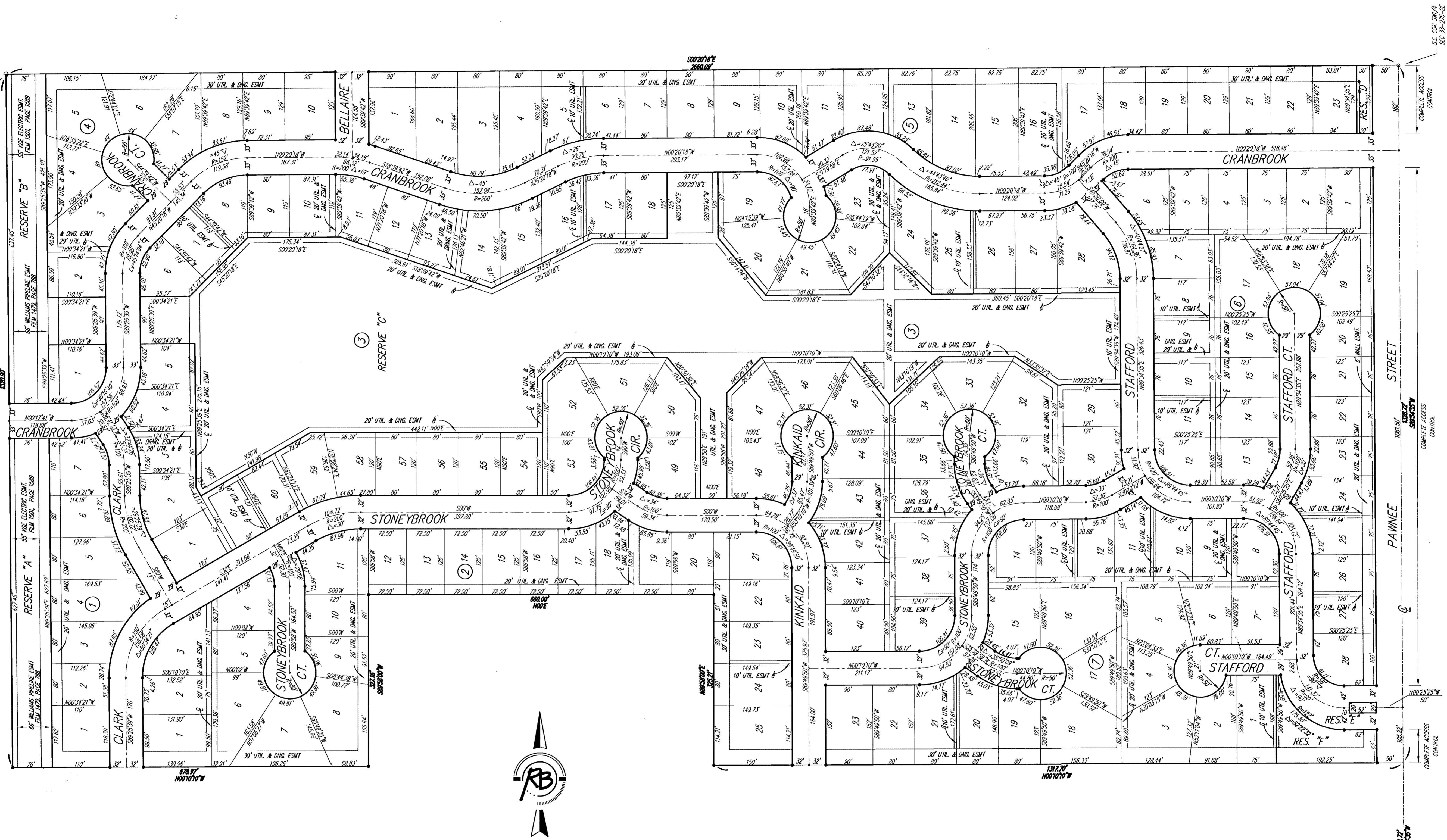


BRENTWOOD SOUTH ADDITION

WICHITA, SEDGWICK COUNTY, KANSAS



BLOCK	LOT NO.	ELEVATION (M.G.V.D.)
3	Lots 1-20, 47 Lots 50-61	1369

Please contact Western Resources (or its successor) Electric Transmission Engineering Department (currently 785-575-8219) before conducting any proposed construction activities that could place people, equipment, or facilities within Western Resources' easement, shown on this plat, designated as Film 1501, Page 1589, dated December 29, 1994.

- △ = CITY OF WICHITA CONTROL THIMBLE (FOUND)
- = 1/2" REBAR W/CARBON CAP (FOUND)
- = 5/8" REBAR (FOUND)
- = 1/2" REBAR W/SRB CAP (SET)

BENCH MARK #1: USGS BRASS PLUG 28" S. & 530' W. OF CENTERLINE INTERSECTION OF CAPRI & PAINNEE ELEV=1386.25 NGVD
 BENCH MARK #2: CITY OF WICHITA STD. DISC 20.8" W. & 54.5' S. OF CENTERLINE INTERSECTION DALTON & PAINNEE ELEV=1378.60

**Brentwood South Addition
FINAL PLAT**
 WICHITA, SEDGWICK COUNTY, KANSAS

Ruggles & Bohm, P.A.
 Engineering, Surveying, Land Planning

924 North Main
 Wichita, Kansas 67203
 www.rbkansas.com

(316) 284-8008
 (316) 284-4821 fax
 E-mail: info@rbkansas.com

DESIGN KWL
 DRAWN RA
 REVIEW RA
 UTILITY

PROJECT NUMBER
 472-83445

DATE
 June 23, 2009

SHEET
 OF
 36
 OF
 36

15-01-01-10