

**BENCHMARKS:**

BM #1: "□" Cut in top of curb on north side of Athenian, near the SE corner of Lot 13, Block 1, Valencia Addition.  
Elev. = 1332.11 NAVD88

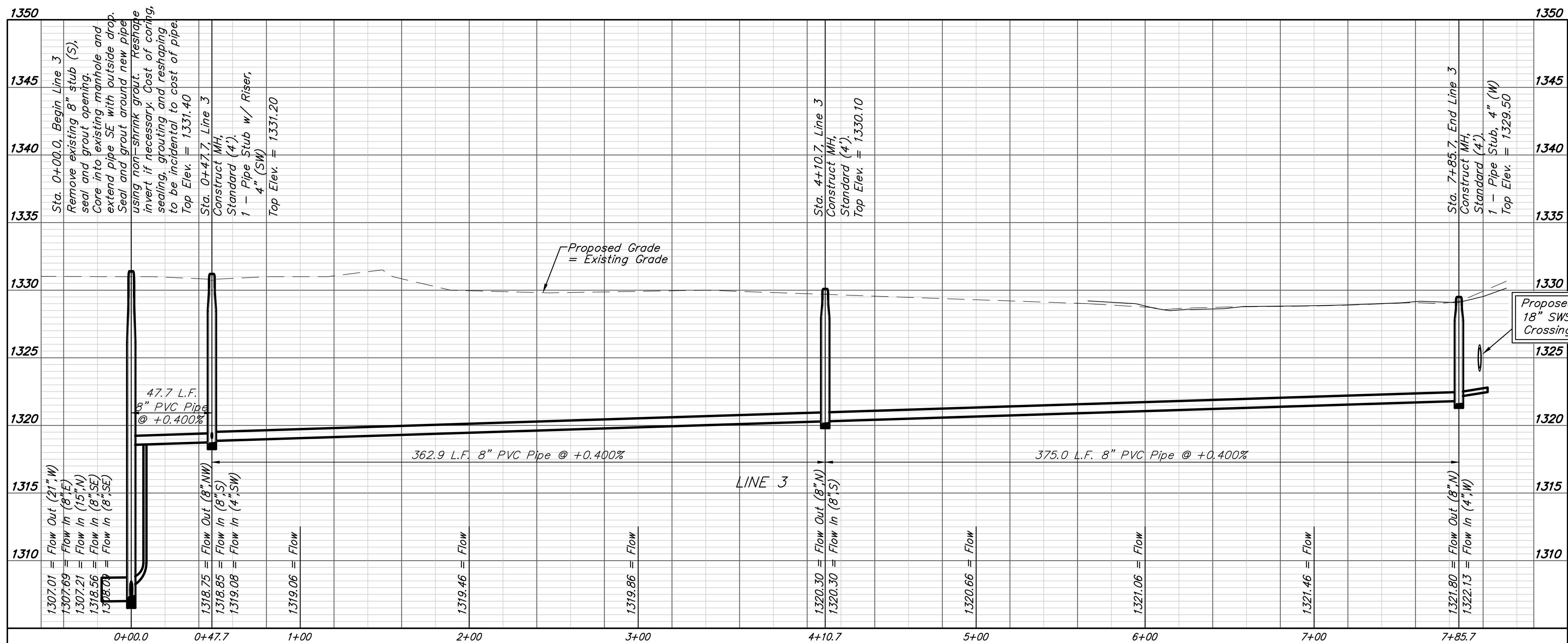
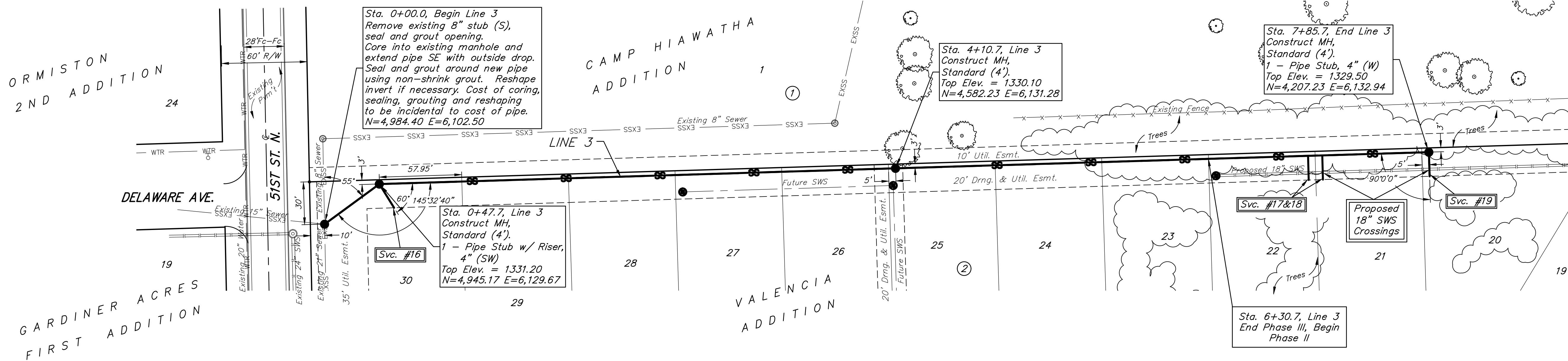
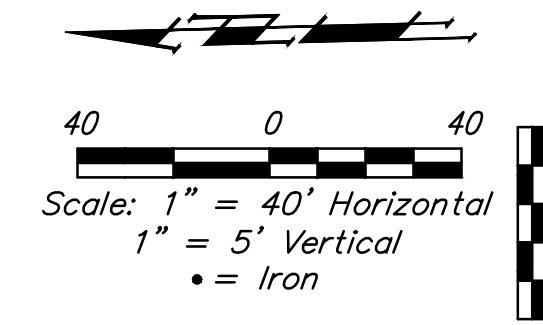
BM #2: Cross cut in sidewalk on north side of Harborlight St., near Lot 23, Block 1, Harbor Isle 2nd Addition.  
Elev. = 1330.40 NAVD88

**SEWER SERVICE TABLE**

NUMBER	TYPE	LOCATION			FOR INFORMATION ONLY		
		LOT NO.	BLOCK NO.	LINE NO.	STATION \ DIRECTION	APPROXIMATE LENGTH 4" PIPE	
16	4" Stub w/Riser	30	2	3	0+47.7/Rt.	8.5'	19.6'
17	8" X 4" Tee w/Riser	22	2	3	7+00.7/Rt.	3.5'	17.0'
18	8" X 4" Tee w/Riser	21	2	3	7+10.7/Rt.	3.5'	17.0'
19	4" Stub	20	2	3	7+85.7/Rt.	3.5'	17.0'

NOTE: Vertical Riser Pipe shall be extended to 2' minimum above ground water elevation and 4' maximum below proposed ground elevation.

Trees to be removed by the Contractor only as necessary for sewer construction and with approval of the Engineer. Cost of tree removal to be included in bid item "Site Clearing"



Contractor shall verify location and depth of existing manhole prior to construction and notify Engineer of any discrepancy.

VALENCIA ADDITION - PH. II & III  
**LINE 3**  
SANITARY SEWER IMPROVEMENTS

**Baughman Company, P.A.**  
Professional Engineer  
21190  
1-24-19  
KANSAS  
PROFESSIONAL ENGINEER

5 OF 16