





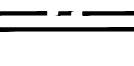



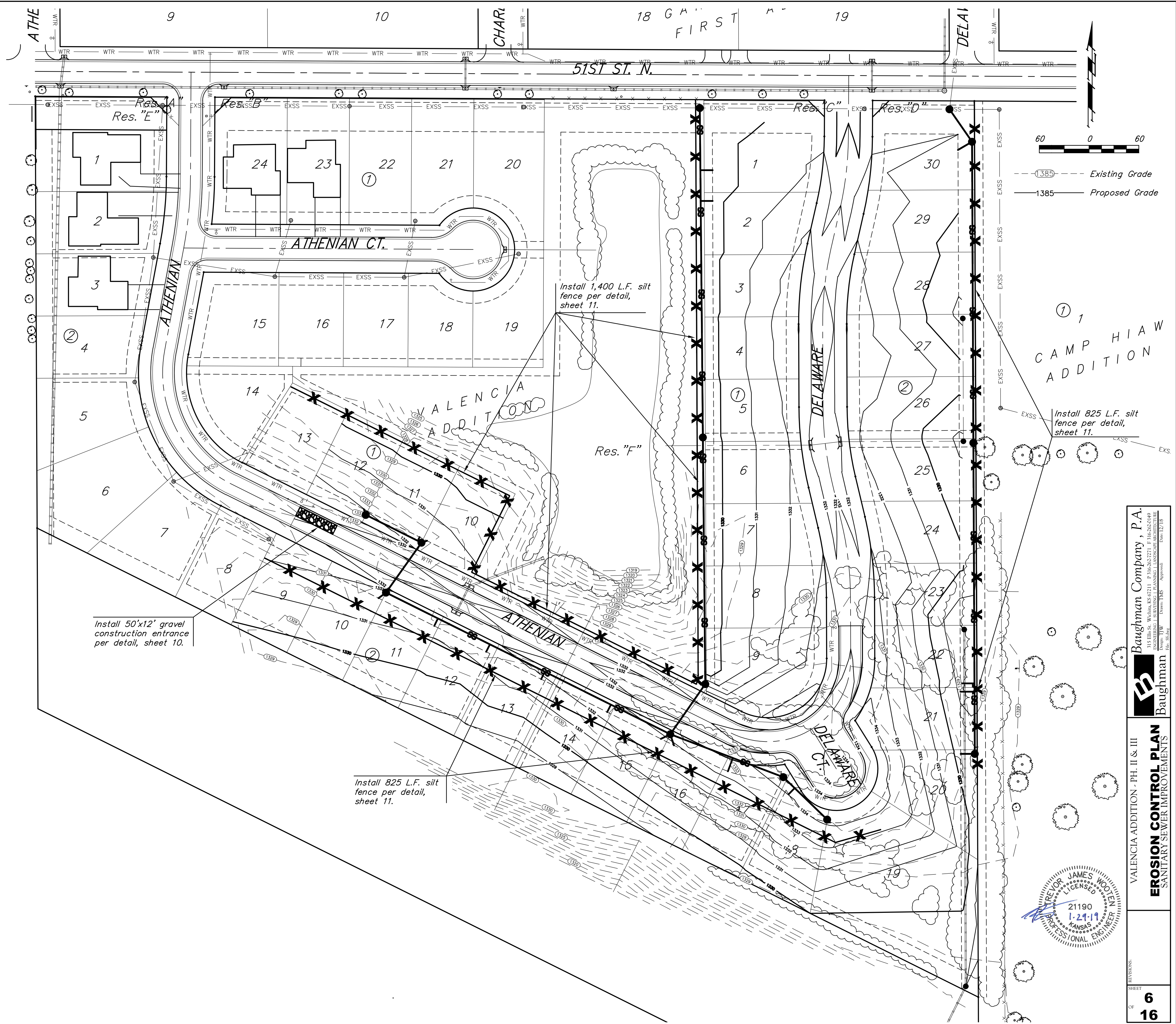
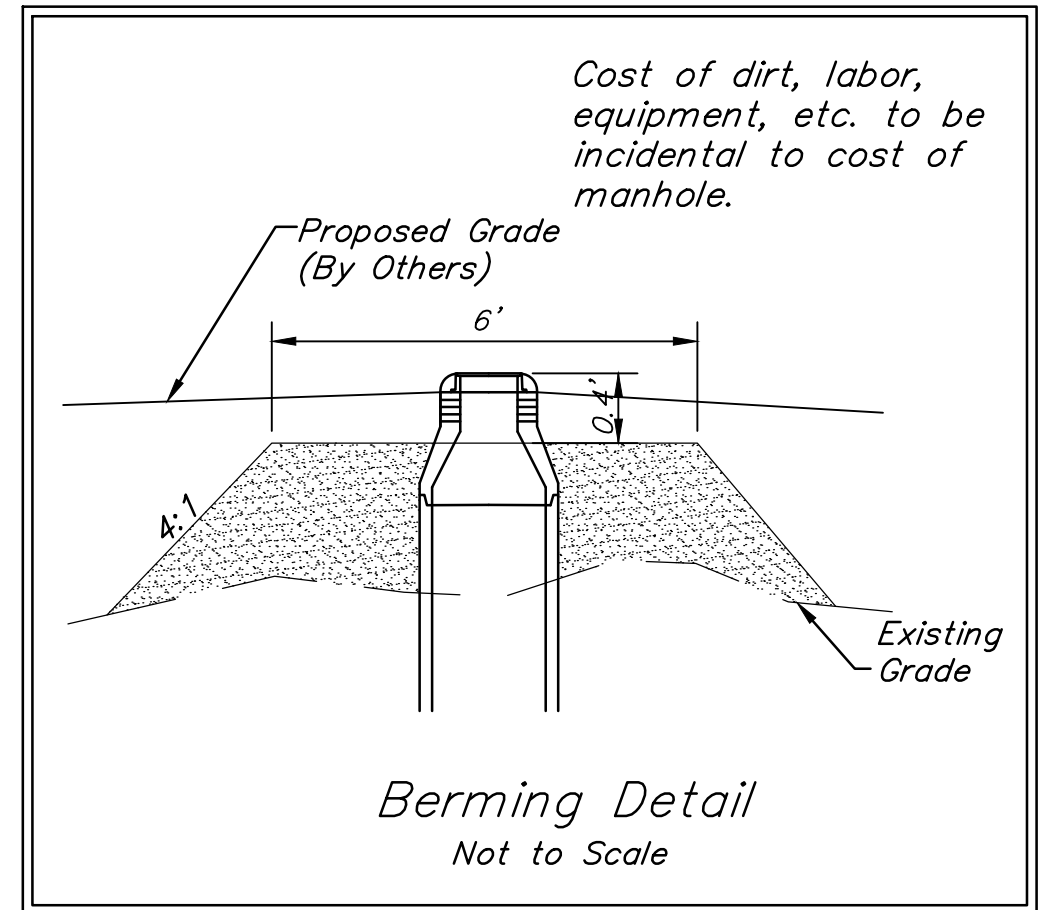
**EROSION CONTROL PLAN LEGEND**  
(Installation Details Found in the SMP2 Plan)

-  - DROP INLET PROTECTION
-  - CURB INLET PROTECTION
-  - DITCH CHECKS
-  - SILT FENCING
-  - EROSION CONTROL BERM
-  - BACK OF CURB PROTECTION
-  - EROSION CONTROL MAT
-  - TEMPORARY DITCH  
NO SCALE

EROSION CONTROL MEASURE	INSTALL	MAINTAIN	REMOVE
BACK OF CURB PROTECTION (LF)	0	0	0
CONSTRUCTION ENTRANCE (EA)	1	0	0
CURB INLET BARRIER (EA)	0	0	0
DITCH CHECK (EA)	0	0	0
DROP INLET PROTECTION (EA)	0	0	0
EROSION CONTROL (LS)	0	0	0
EROSION CONTROL BERM (LF)	0	0	0
SILT FENCE (LF)	3,050	0	0
EROSION CONTROL MAT (SY)	0	0	0

QUANTITIES ARE FOR INFORMATION ONLY! CONTRACTOR SHALL VERIFY QUANTITIES PER FINAL BID QUANTITY SHEET.

\* ALL EXISTING BMPs INCLUDING CONSTRUCTION ENTRANCE, SEDIMENT BARRIERS, SILT FENCE, EROSION CONTROL BERM, AND EROSION CONTROL MAT SHALL BE MAINTAINED AND REPAIRED IF NECESSARY. REPLACEMENT OR REMOVAL OF EROSION CONTROL MEASURES TO BE PAID FOR BY L.S. BID ITEM "MAINTAIN EXISTING EROSION CONTROL BMPs"



21190  
1-24-11  
JAMES WOOTEN  
LICENSED PROFESSIONAL ENGINEER  
KANSAS

Baughman Company, P.A.  
Baughman

VALENCIA ADDITION - PH. II & III  
EROSION CONTROL PLAN  
SANITARY SEWER IMPROVEMENTS