

WHISPERING LAKES ESTATES

WICHITA, SEDGWICK COUNTY, KANSAS



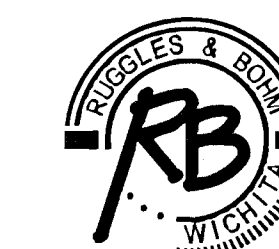
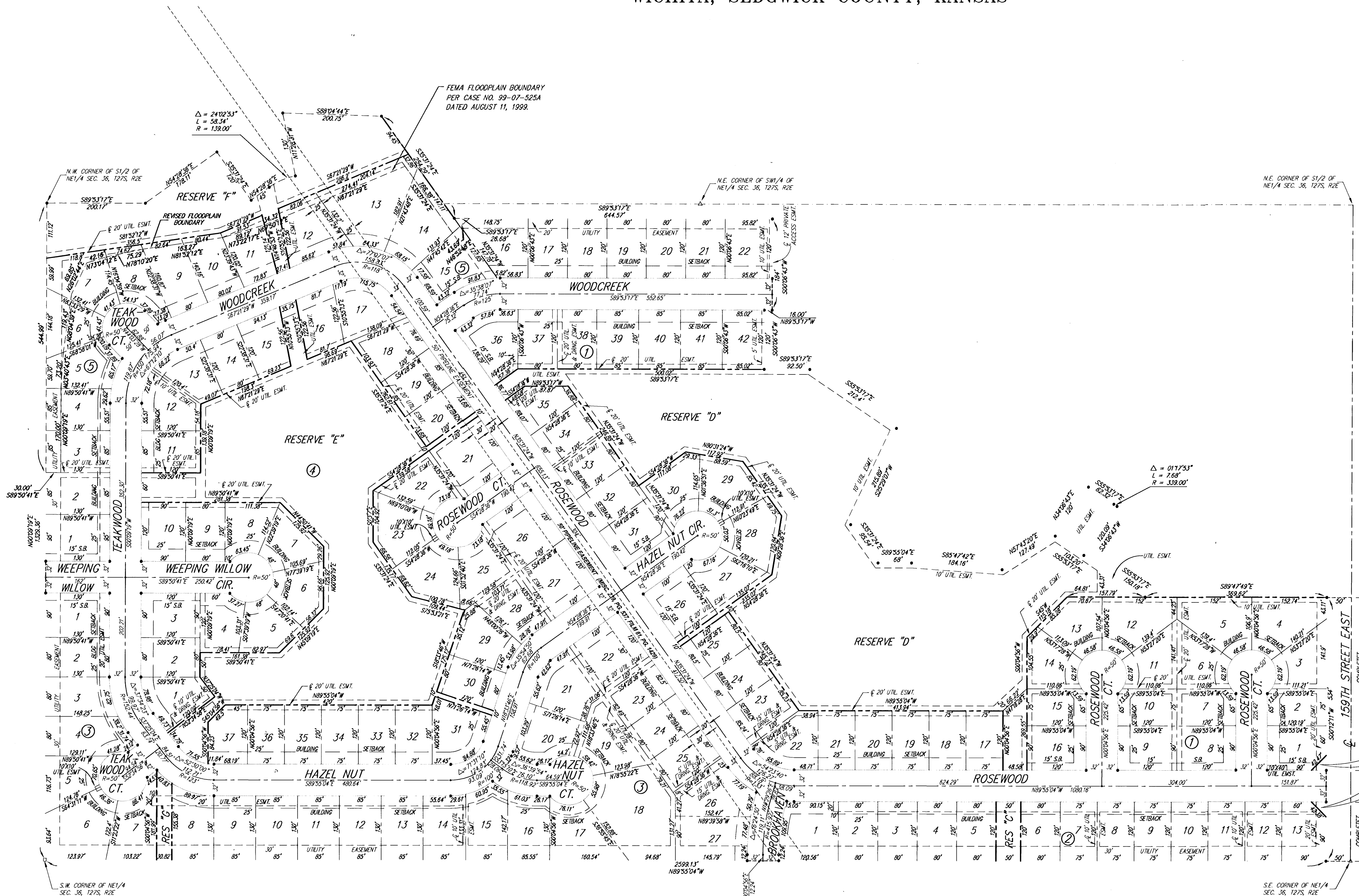
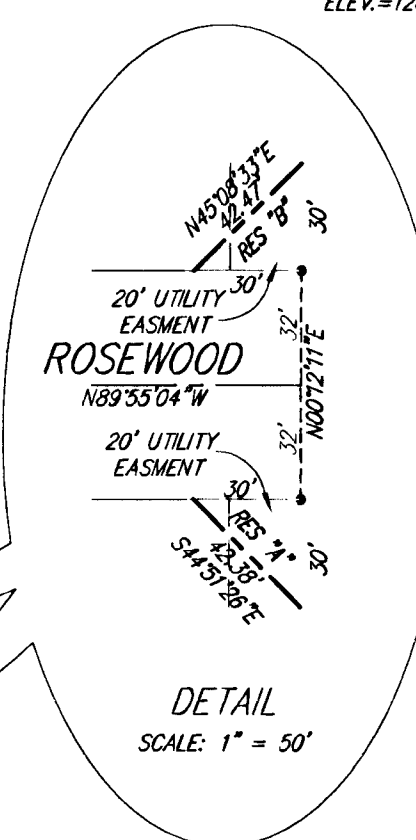
SCALE: 1"=100'

LEGEND

- △ = E 1/4 CORNER (FOUND)
- = STONE W/4 CUT (FOUND)
- = 1/2" REBAR W/SRB CAP (SET)

BLOCK	LOT NO.	ELEVATION (N.G.V.D.)
1	4, 5	1291.5
1	12, 13, 14, 15, 16, 17, 18, 19, 20, 21, 22, 23, 24, 25, 26, 27, 28, 29, 30, 31, 32, 33, 34, 35, 36, 37, 38, 39, 40, 41, 42	1294
	4, 5, 6, 7	1296.2
	7, 8	1299.7
	18, 19, 20, 21, 22, 23, 24, 25, 26, 27	1299.4
	1, 2, 3, 4, 5, 6, 7, 23, 24, 25	1297.1
4	8, 9, 10, 11, 12, 13, 14, 15, 16, 17, 18, 19, 20, 21, 22	1295.1
	1, 2, 3, 4, 5, 6, 7	1294
5	8, 9, 10	1293.5
	11, 12, 13, 14, 15, 16, 17, 18	1293
5	19, 20, 21, 22	1292

BENCHMARK: R.R. SPIKE ON POWER POLE 47' E & 853' N OF S.E. COR. NE 1/4 SEC. 36-27S-2E ELEV=1287.62 (N.G.V.D.)



Ruggles & Bohm, P.A.

Engineering, Surveying, Land Planning

924 North Main (316) 264-8008
Wichita, Kansas 67203 (316) 264-4621 fax
www.rbkansas.com E-mail: info@rbkansas.com