

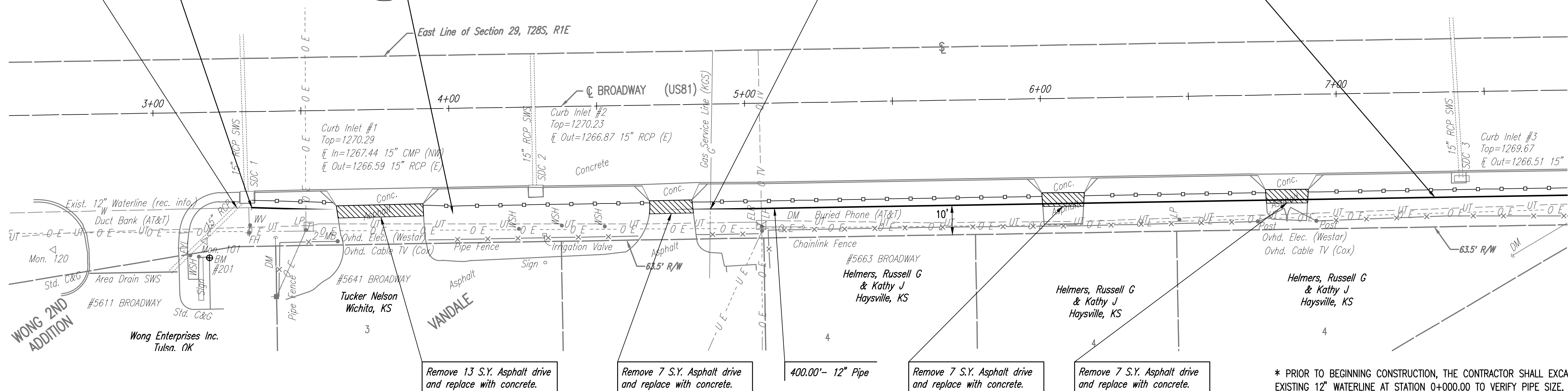
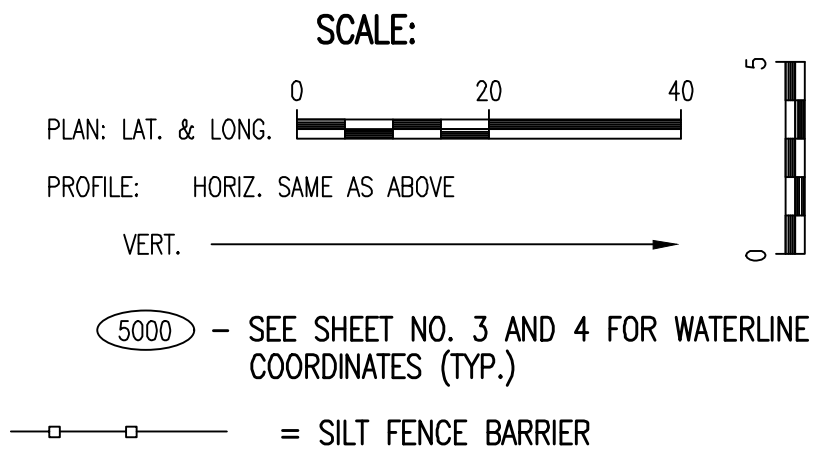
N: 1651599.6171, E: 1650100.8931  
 WL 1, Sta. 0+00.00=  
 BROADWAY CL, Sta. 3+32.82, 32' R  
 Existing 12" Waterline \*  
 Remove Existing 12" Cap  
 and begin construction.  
 Connection to existing pipe shall be  
 made with clean swabbed pipe.  
 (Fittings, adaptors, and other  
 incidentals as necessary)

N: 1651531.5528, E: 1650098.9214  
 WL 1, Sta. 0+68.09=  
 BROADWAY CL, Sta. 4+00.84, 36' R  
 Horizontal Deflection  
 Use High Deflection Coupling  
 Defl. = 2'35"57"

N: 1651799.6903, E: 1650104.3656  
 WL 1, Sta. 4+00.00=  
 BROADWAY CL, Sta. 7+32.75, 35' R  
 Match Point

CAUTION !!!  
 15" RCP  
 Storm Water Sewer

CAUTION !!!  
 Gas Service Line  
 (KGS)



Remove 13 S.Y. Asphalt drive  
 and replace with concrete.

Remove 7 S.Y. Asphalt drive  
 and replace with concrete.

Remove 7 S.Y. Asphalt drive  
 and replace with concrete.

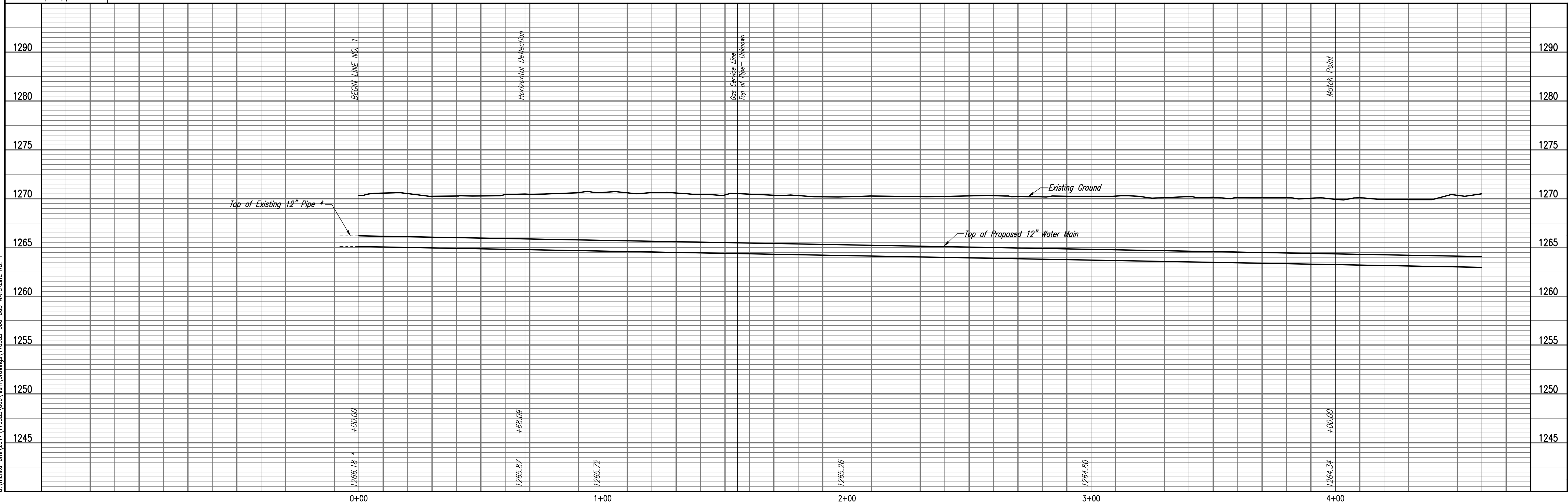
Remove 7 S.Y. Asphalt drive  
 and replace with concrete.

\* PRIOR TO BEGINNING CONSTRUCTION, THE CONTRACTOR SHALL EXCAVATE THE EXISTING 12" WATERLINE AT STATION 0+000.00 TO VERIFY PIPE SIZE, TYPE, FITTINGS, AND HORIZONTAL AND VERTICAL LOCATION. THE CONTRACTOR SHALL REPORT HIS FINDINGS TO THE ENGINEER SO THAT ANY NECESSARY PLAN MODIFICATIONS CAN BE MADE. ANY ADDITIONAL LABOR OR MATERIALS NECESSARY TO COMPLETE THE CONNECTION SHALL BE CONSIDERED SUBSIDIARY TO THE PROJECT.



Unless noted otherwise, elevations shown are top of pipe

WATERLINE NO. 1



PLAN	CHECKED	DATE
	CHECKED	

PROFILE	CHECKED	DATE
	CHECKED	

Saved: 06-25-2018 1:58:47 PM by KURPIS,DEKAT  
 Plot Scale: 1" = 10'-0" (Horizontal) 1" = 10'-0" (Vertical)  
 U:\Projects\Civil\2017\170585\000\Drawings\170585-000-005-WATERLINE NO. 1

WATER DISTRIBUTION IMPROVEMENTS  
 12" WATERLINE ALONG BROADWAY, 55TH TO 63RD STREET SOUTH  
 WATERLINE NO. 1

PROFESSIONAL ENGINEERING CONSULTANTS P.A.  
 308 SOUTH TOPEKA WICHITA, KS 67202  
 316-262-2681 www.pec1.com

Designed By: JAG, TBK  
 Drawn By: CSL, KTD

Job No. 35-170585-000-0042  
 Date August 2017

GARY JANZEN, P.E. - CITY ENGINEER  
 CITY OF WICHITA PROJECT NO. 448-90821

Sheet 5 of 26