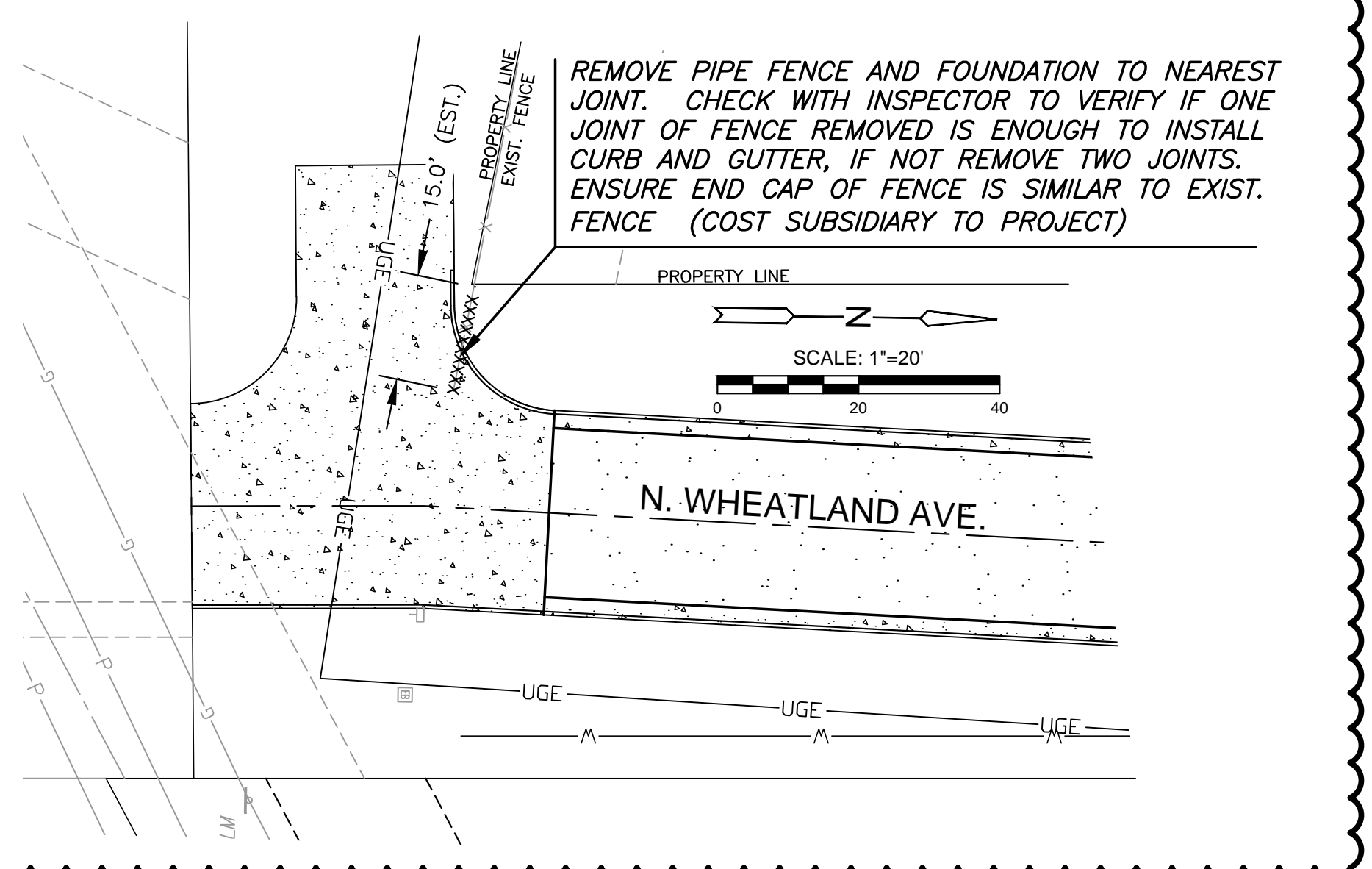
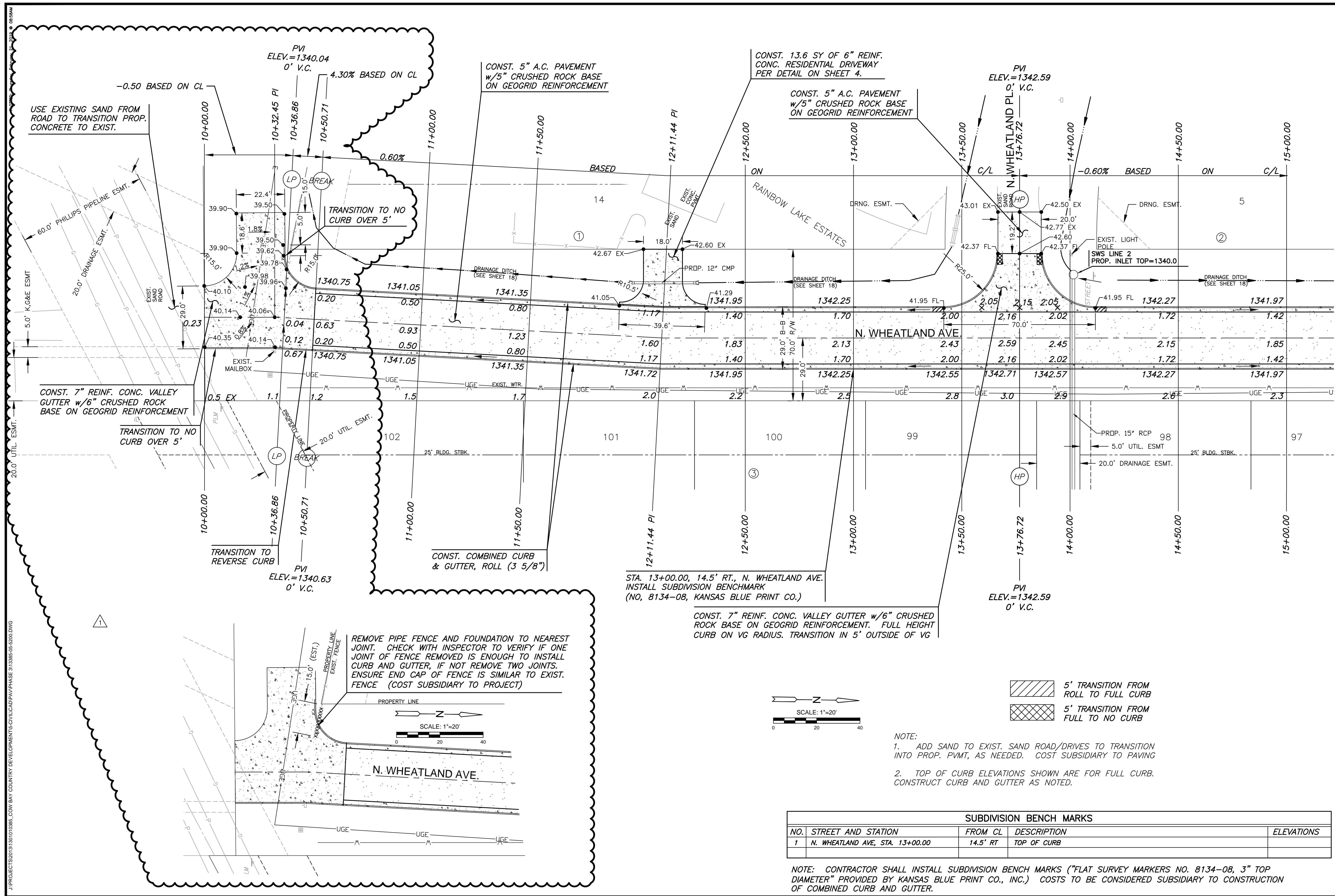
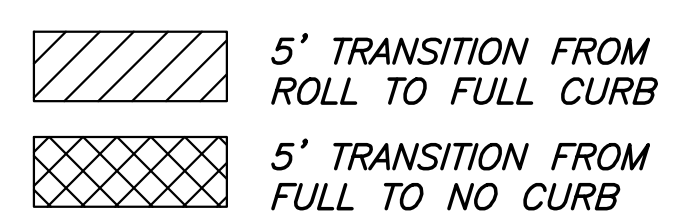


PAVING & INCIDENTAL DRAINAGE FOR  
**BAY COUNTRY (PHASE 3)**  
WHICHITA, KANSAS



STA. 13+00.00, 14.5' RT., N. WHEATLAND AVE.  
INSTALL SUBDIVISION BENCHMARK  
(NO. 8134-08, KANSAS BLUE PRINT CO.)

CONST. 7\"/>



- NOTE:
1. ADD SAND TO EXIST. SAND ROAD/DRIVES TO TRANSITION INTO PROP. PVMT, AS NEEDED. COST SUBSIDIARY TO PAVING
  2. TOP OF CURB ELEVATIONS SHOWN ARE FOR FULL CURB. CONSTRUCT CURB AND GUTTER AS NOTED.

SUBDIVISION BENCHMARKS				
NO.	STREET AND STATION	FROM CL	DESCRIPTION	ELEVATIONS
1	N. WHEATLAND AVE, STA. 13+00.00	14.5' RT	TOP OF CURB	

NOTE: CONTRACTOR SHALL INSTALL SUBDIVISION BENCHMARKS ("FLAT SURVEY MARKERS NO. 8134-08, 3\"/>

©2019 MKEC Engineering All Rights Reserved www.mkec.com  
These drawings and their contents, including, but not limited to, all concepts, designs, & ideas are the exclusive property of MKEC Engineering (MKEC), and may not be used or reproduced in any way without the express consent of MKEC.

PLAN SHEET 1

PROJECT NO.	472-85506
DATE	FEB. 2019
SCALE	1\"/>
DESIGNED	GJA
DRAWN	CRM
CHECKED	MAB

NO.	REVISION	DATE
1	PLAN REVISION	02-20-19
0	IFC	02-13-19