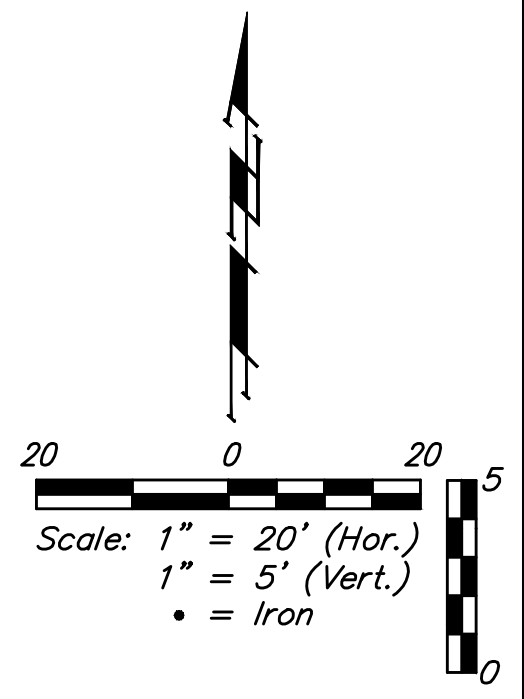
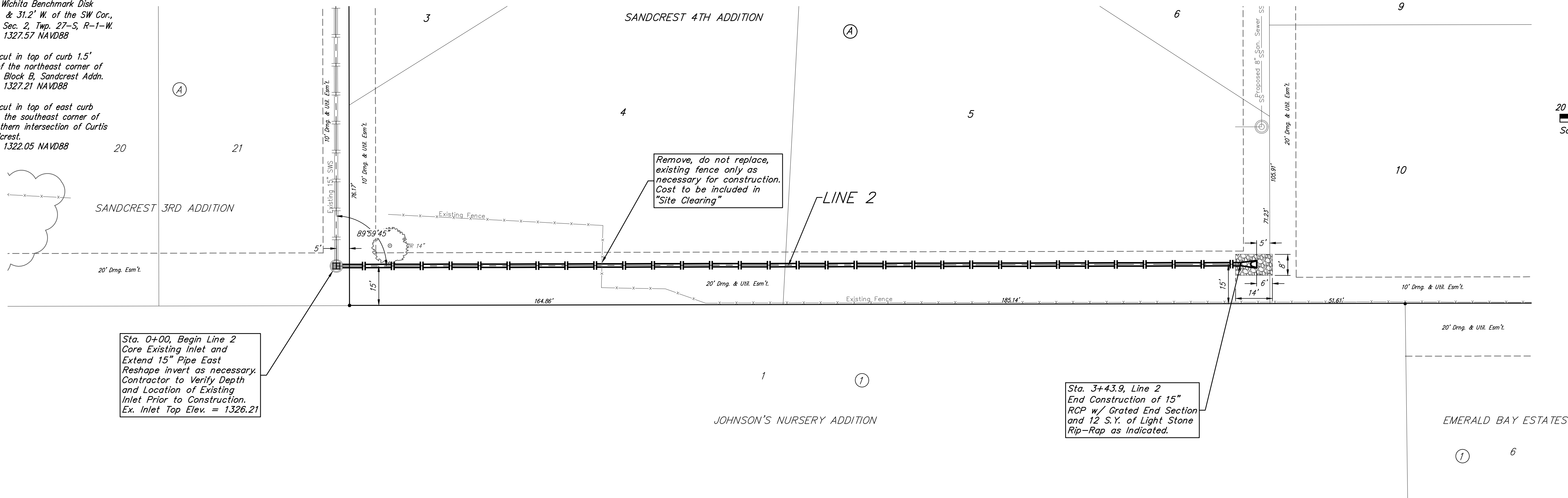


BENCHMARKS:
 City of Wichita Benchmark Disk
 34.9' S. & 31.2' W. of the SW Cor.,
 NW1/4, Sec. 2, Twp. 27-S, R-1-W.
 Elev. = 1327.57 NAVD88

"□" cut in top of curb 1.5'
 north of the northeast corner of
 Lot 20, Block B, Sandcrest Addn.
 Elev. = 1327.21 NAVD88

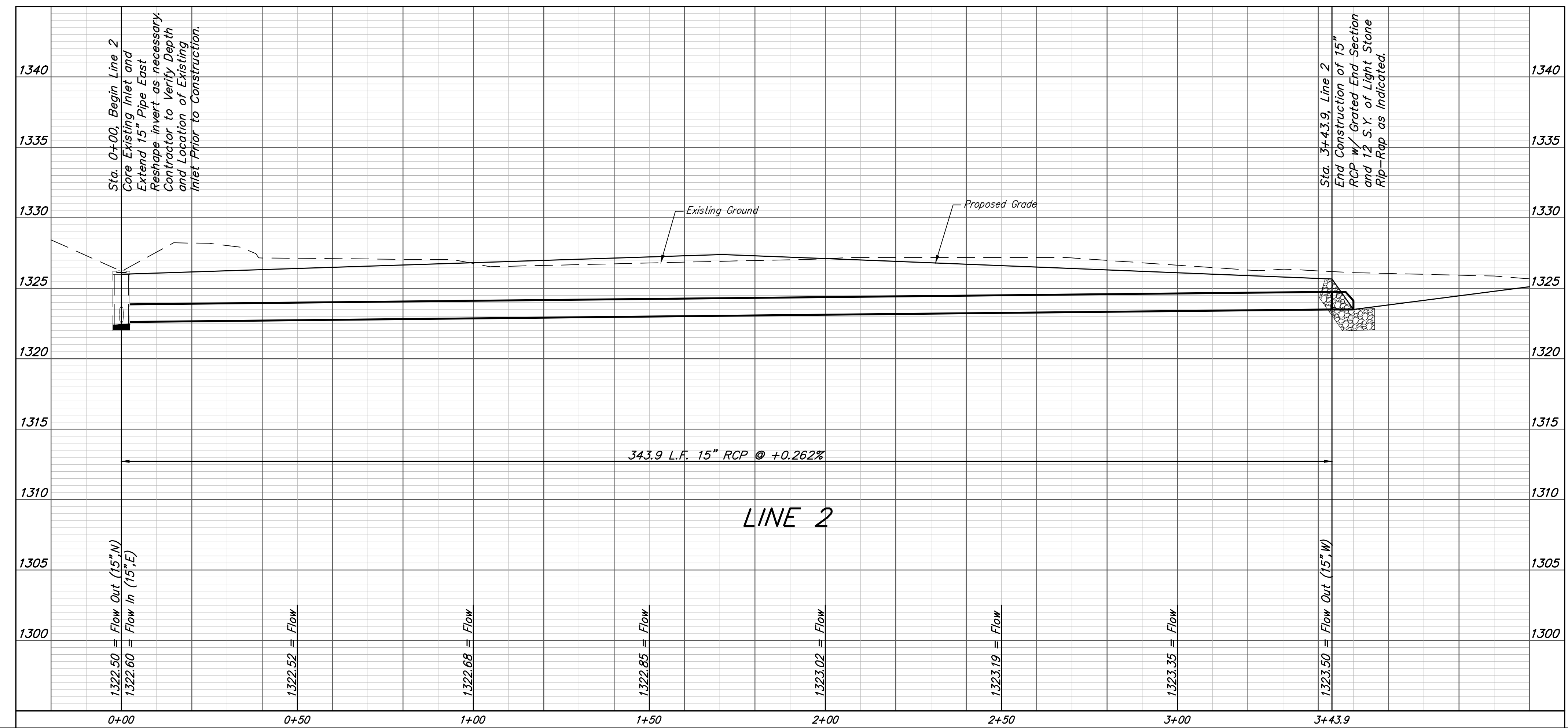
"□" cut in top of east curb
 inlet at the southeast corner of
 the southern intersection of Curtis
 & Sandcrest.
 Elev. = 1322.05 NAVD88



Sta. 0+00, Begin Line 2
 Core Existing Inlet and
 Extend 15" Pipe East
 Reshape invert as necessary.
 Contractor to Verify Depth
 and Location of Existing
 Inlet Prior to Construction.
 Ex. Inlet Top Elev. = 1326.21

Remove, do not replace,
 existing fence only as
 necessary for construction.
 Cost to be included in
 "Site Clearing"

Sta. 3+43.9, Line 2
 End Construction of 15"
 RCP w/ Grated End Section
 and 12 S.Y. of Light Stone
 Rip-Rap as Indicated.



Baughman		Sandcrest 3rd & 4th Addition	
		LINE 2	
		Storm Water Drain #438	
Baughman Company, P.A. 315 Ellis St. Wichita, KS 67211 P 316-262-7271 F 316-262-0149 ENGINEERING SURVEYING PLANNING LANDSCAPE ARCHITECTURE			
PROJECT NUMBER 468	DESIGN AEG	DRAWN JAK	
REVISIONS:	APPROVED	DATE 2/19/19	
	SCALE Noted	SHEET	
			3 OF 21