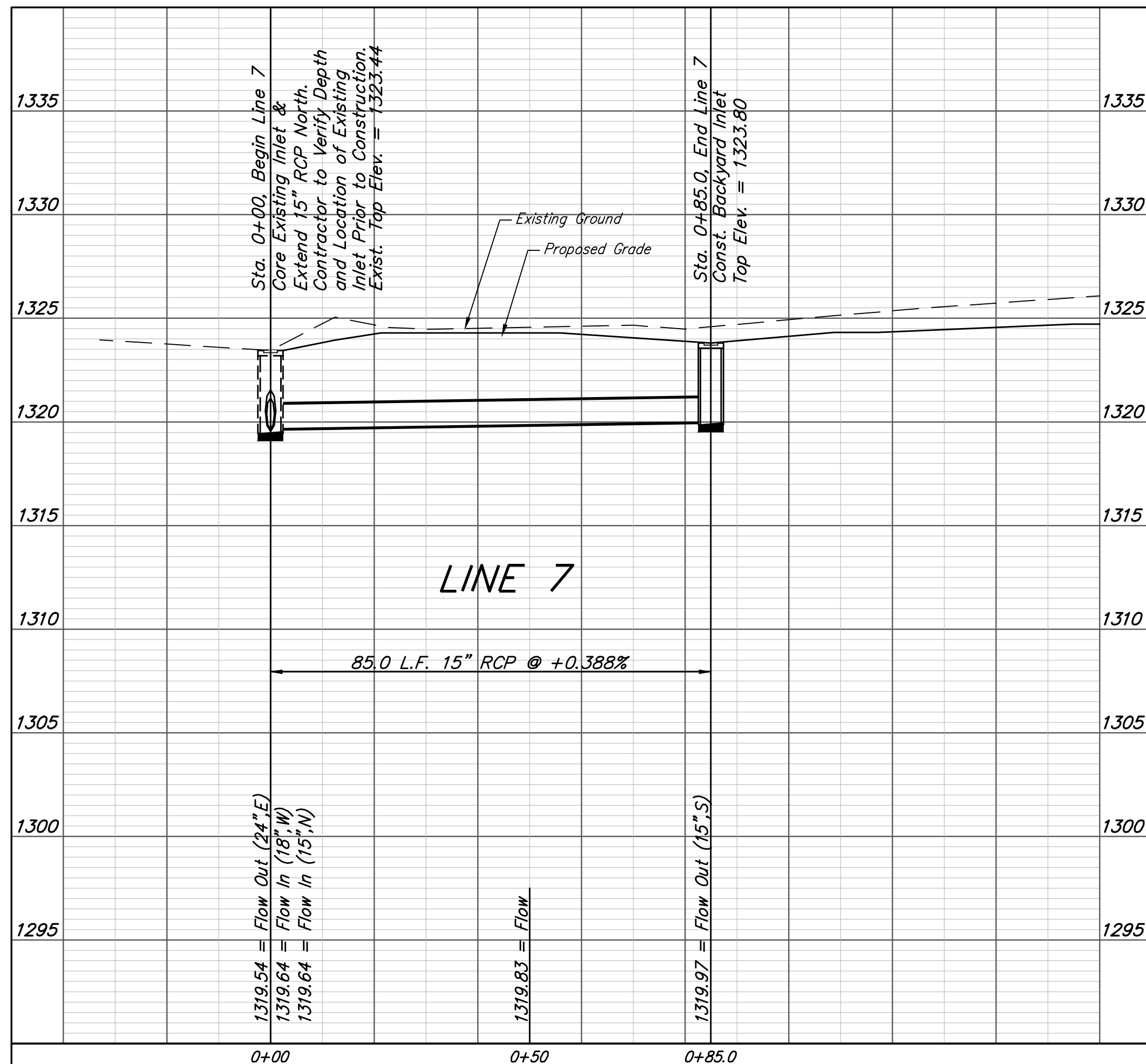
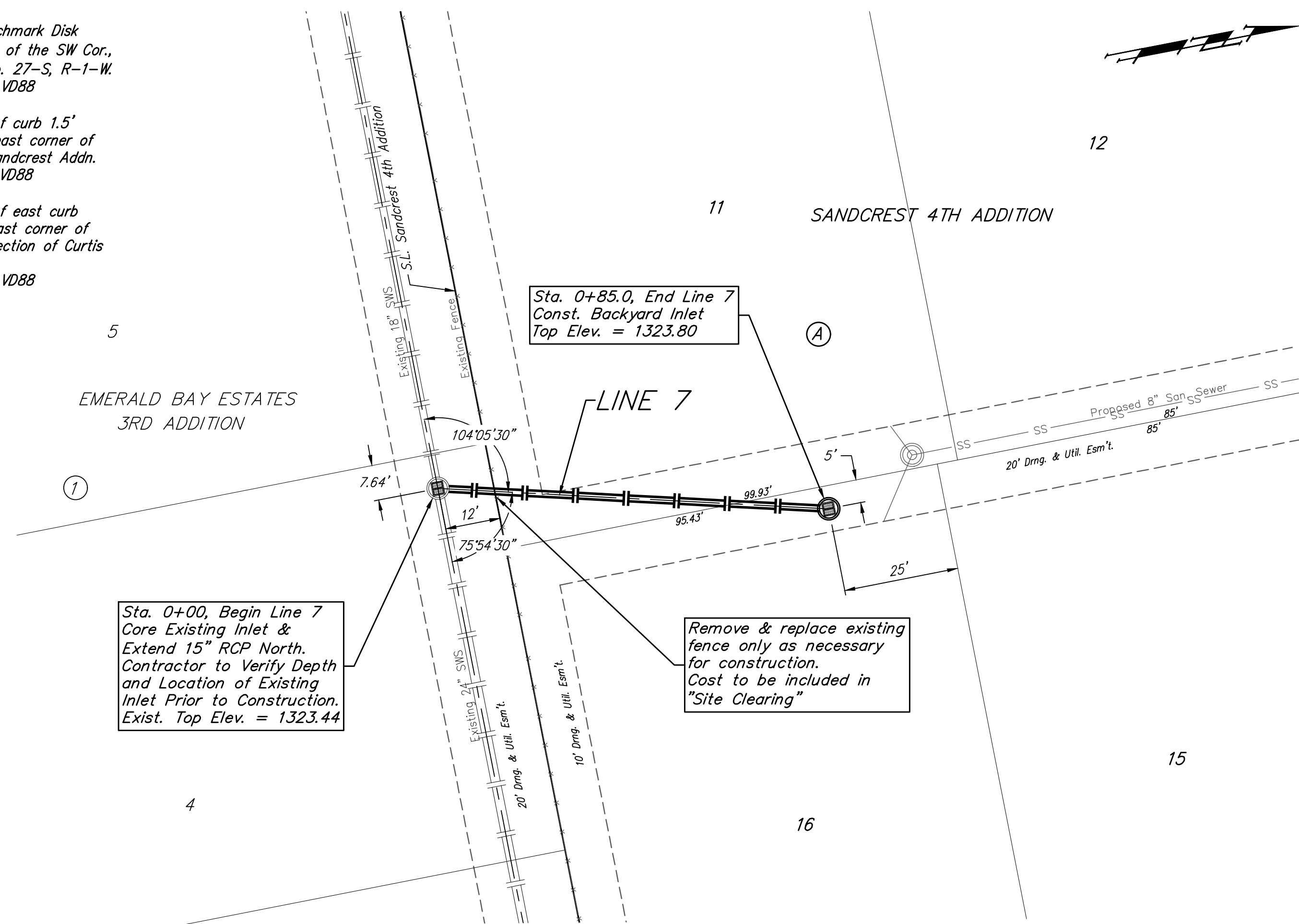


**BENCHMARKS:**  
 City of Wichita Benchmark Disk  
 34.9' S. & 31.2' W. of the SW Cor.,  
 NW1/4, Sec. 2, Twp. 27-S, R-1-W.  
 Elev. = 1327.57 NAVD88

"□" cut in top of curb 1.5'  
 north of the northeast corner of  
 Lot 20, Block B, Sandcrest Addn.  
 Elev. = 1327.21 NAVD88

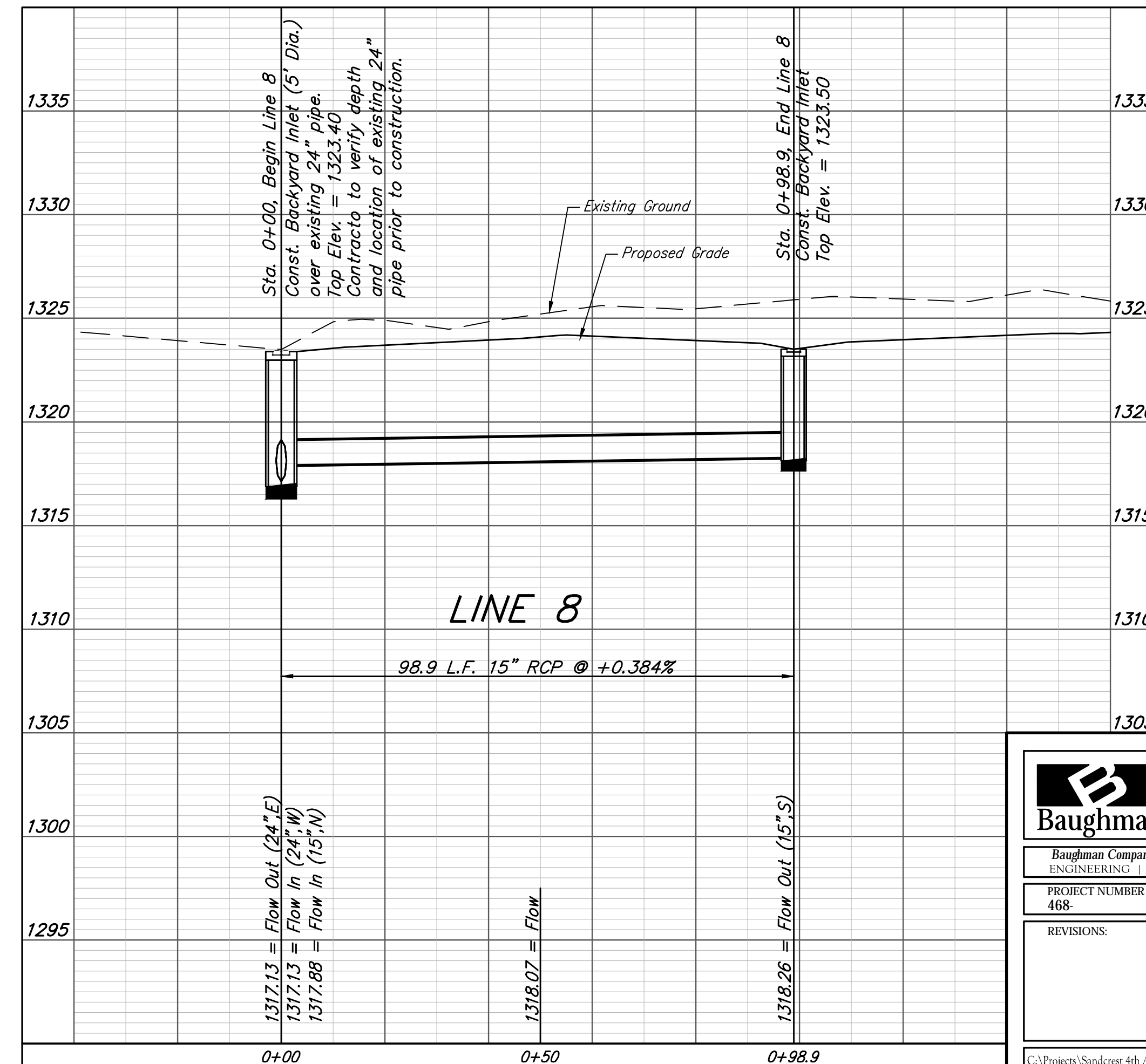
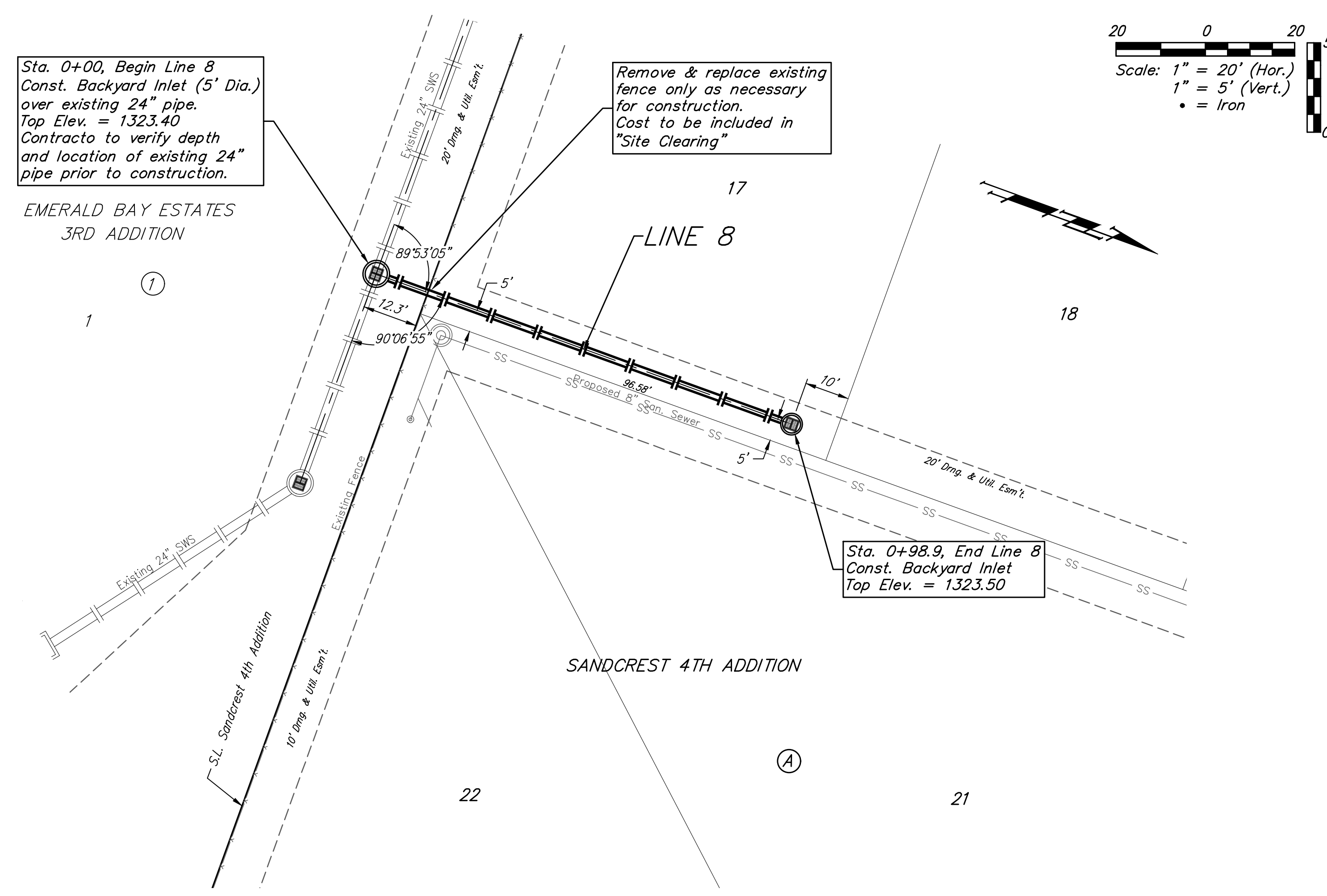
"□" cut in top of east curb  
 inlet at the southeast corner of  
 the southern intersection of Curtis  
 & Sandcrest.  
 Elev. = 1322.05 NAVD88



Sta. 0+00, Begin Line 8  
 Const. Backyard Inlet (5' Dia.)  
 over existing 24" pipe.  
 Top Elev. = 1323.40  
 Contractor to verify depth  
 and location of existing 24"  
 pipe prior to construction.

Remove & replace existing  
 fence only as necessary  
 for construction.  
 Cost to be included in  
 "Site Clearing"

EMERALD BAY ESTATES  
 3RD ADDITION



**Baughman** Sandcrest 3rd & 4th Addition  
**LINE 7 & LINE 8**  
 Storm Water Drain #438

Baughman Company, P.A. 315 Ellis St. Wichita, KS 67211 P 316-262-7271 F 316-262-0149  
 ENGINEERING | SURVEYING | PLANNING | LANDSCAPE ARCHITECTURE

PROJECT NUMBER 468	DESIGN AEG	DRAWN JAK
REVISIONS:	APPROVED	DATE 2/19/19
	SCALE Noted	SHEET 8 OF 21

C:\Projects\Sandcrest 4th Addition\_1801-P351\Engineering\SWD\_1804-E365\SWS Plans.dwg