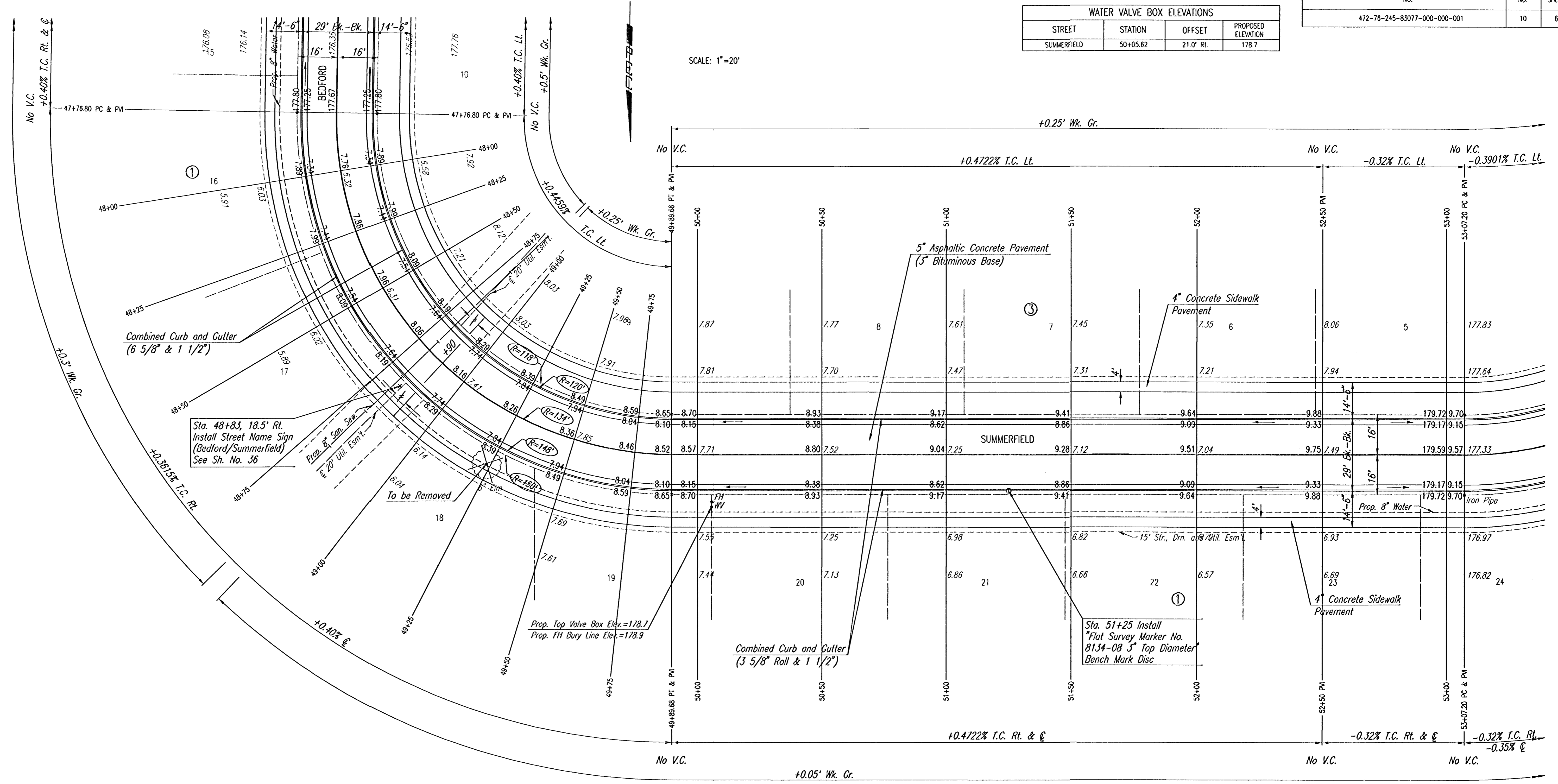


WATER VALVE BOX ELEVATIONS			
STREET	STATION	OFFSET	PROPOSED ELEVATION
SUMMERFIELD	50+05.62	21.0' Rt.	178.7

SCALE: 1"=20'



**Q CURVE DATA**

Δ=91°01'32" D=42°45'29" R=134.00' L=212.88' T=136.42' E=57.22'

CURVE DATA BASED ON Q RADIUS Δ/2=45°30'46"

Q STATION	Q ARC LENGTH	FACE CURB LENGTH		CHORD LENGTH		DEFLECTION ANGLE	Q TOTAL DEFLECTION
		LEFT CURB	RIGHT CURB	8' OFF LEFT FACE CURB	8' OFF RIGHT FACE CURB		
47+76.80						0°00'00"	0°00'00"
48+00	23.20'	20.77'	25.64'	19.37'	26.98'	4°57'36"	4°57'36"
48+25	25.00'	22.39'	27.61'	20.87'	29.06'	5°20'42"	10°18'18"
48+50	25.00'	22.39'	27.61'	20.87'	29.06'	5°20'42"	15°38'59"
48+75	25.00'	22.39'	27.61'	20.87'	29.06'	5°20'42"	20°59'41"
49+00	25.00'	22.39'	27.61'	20.87'	29.06'	5°20'42"	26°20'23"
49+25	25.00'	22.39'	27.61'	20.87'	29.06'	5°20'42"	31°41'04"
49+50	25.00'	22.39'	27.61'	20.87'	29.06'	5°20'42"	37°01'46"
49+75	25.00'	22.39'	27.61'	20.87'	29.06'	5°20'42"	42°22'27"
49+89.68	14.68'	13.14'	16.22'	12.26'	17.08'	3°08'19"	45°30'46"
TOTAL	212.88'	190.64'	235.13'				

Delt./ft.=12.827728 min.

NOTE: PORTIONS OF THIS STREET TO BE CONSTRUCTED WITH ROLL-TYPE CURB. TOP OF CURB ELEVATIONS GIVEN ARE FOR FULL HEIGHT CURB.

TRANSITION FROM COMBINED CURB AND GUTTER (6 5/8" & 1 1/2") TO COMBINED CURB AND GUTTER (3 5/8" ROLL & 1 1/2"). TO BE BID AND PAID FOR AS "COMBINED CURB AND GUTTER (3 5/8" ROLL & 1 1/2)".

CHAPEL HILL ADDITION

## BEDFORD/SUMMERFIELD

STA. 47+76.80 TO STA. 53+07.20

**Professional Engineering Consultants, P.A.**

303 S. TOPEKA • WICHITA, KANSAS 67202  
316-262-2691 • FAX 316-262-3003

Designed by	BER, GDD	Checked by	
Drawn by	DEP	Date	JANUARY, 2001
		Job No.	99127

DSNR: GDD OPER. DEP SCALE: 1"=20.00  
 Q:\1999\99127\000\STR48-53 06-12-2002 09:02:24 am