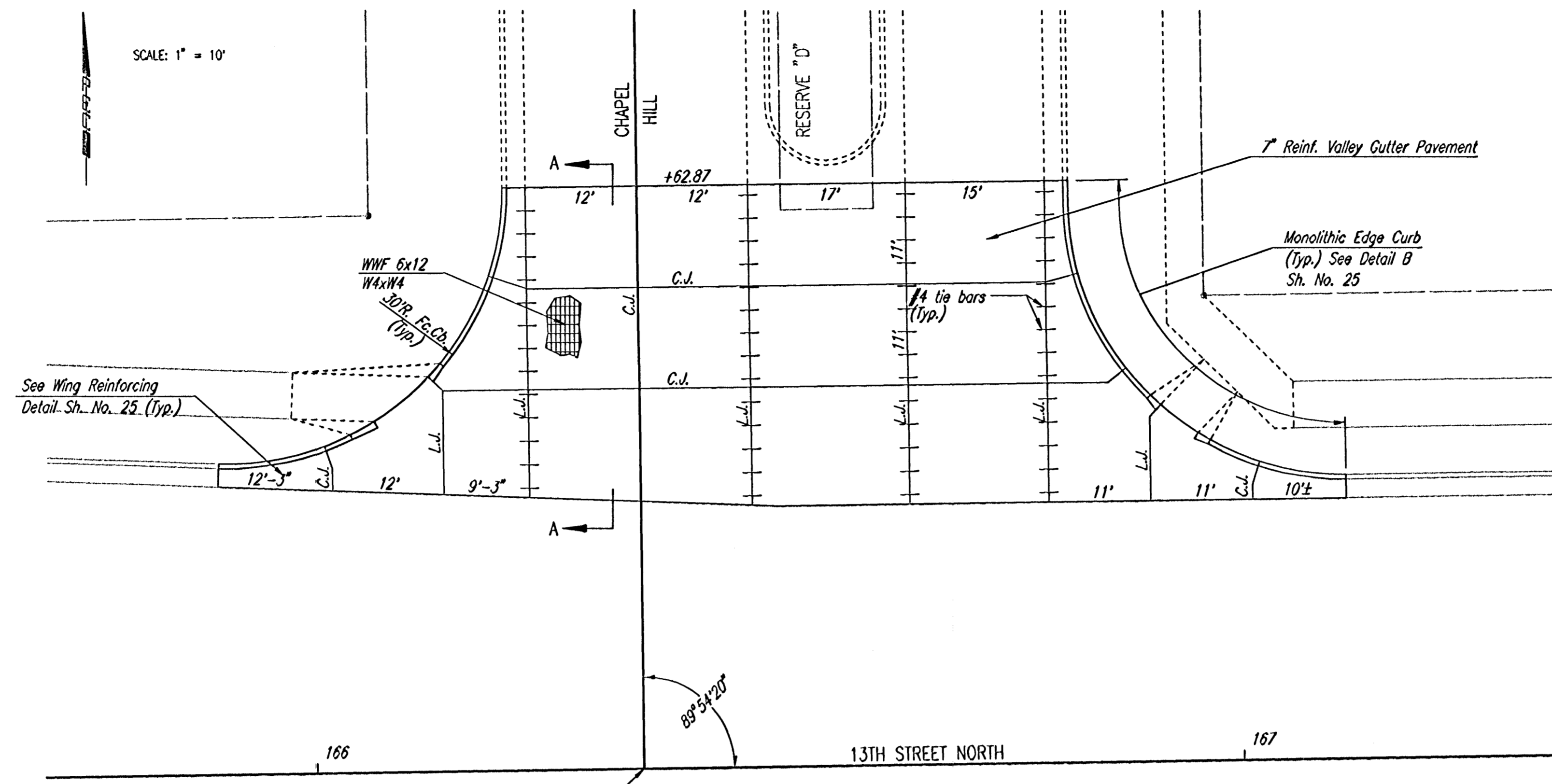
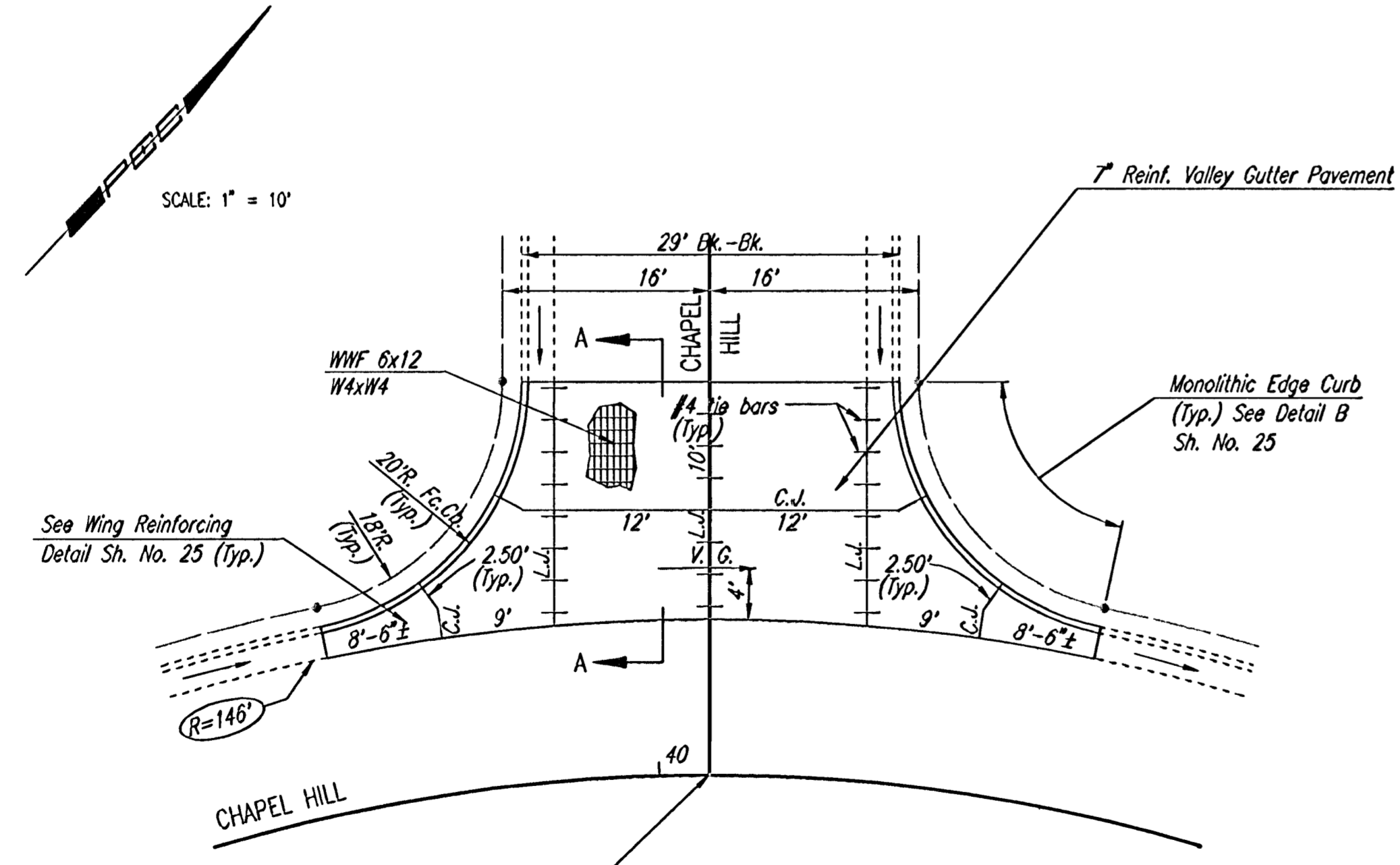


PROJECT NO.	SHEET NO.	TOTAL SHEETS
472-76-245-83077-000-001	24	60



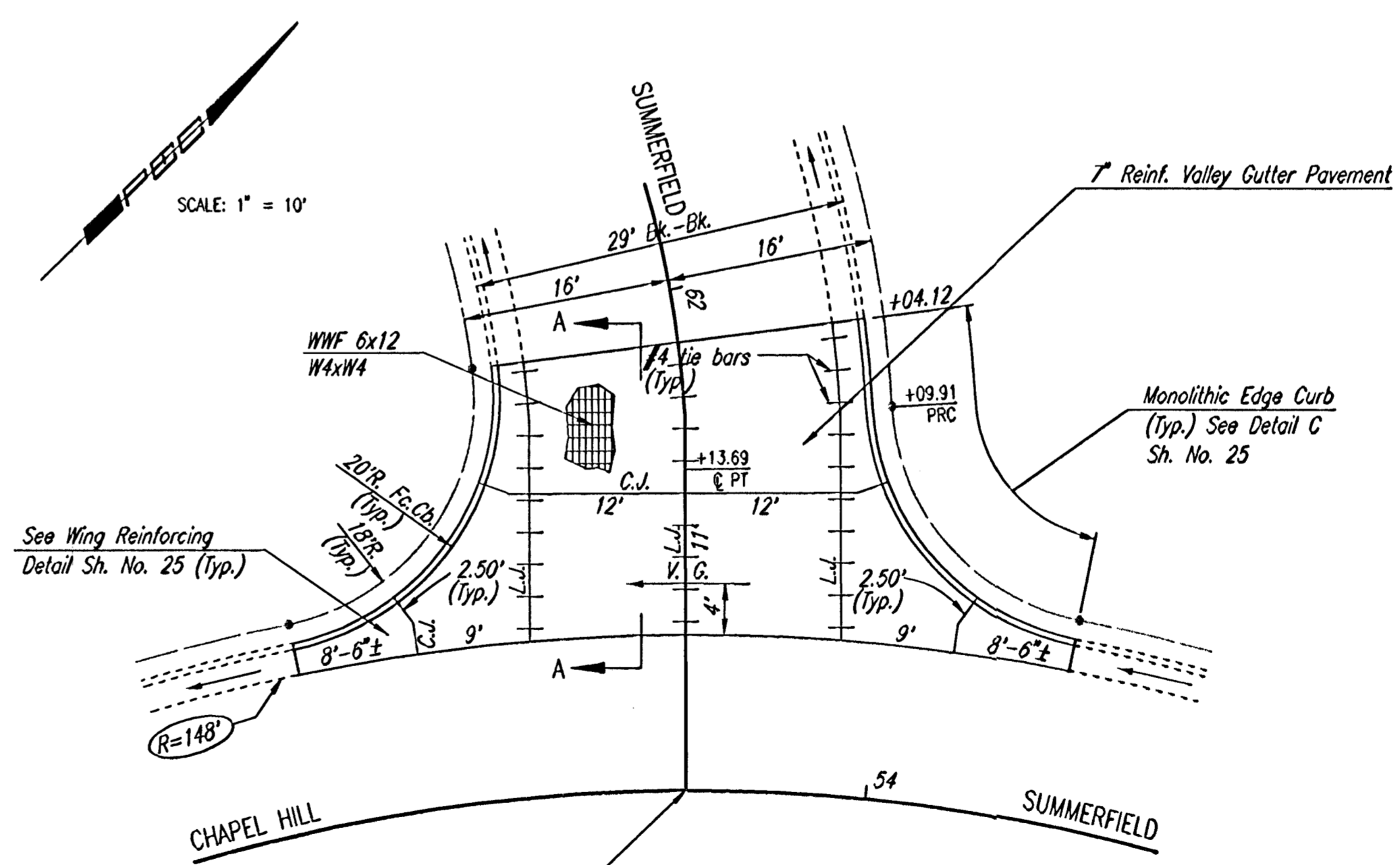
PLAN
REINFORCED VALLEY GUTTER

Sta. 20+00.00 @ Chapel Hill=
Sta. 166+35.24 @ 13th St. N.



PLAN
REINFORCED VALLEY GUTTER

Sta. 40+03.33 @ Chapel Hill/Crestwood=
Sta. 58+56.04 @ Chapel Hill



PLAN
REINFORCED VALLEY GUTTER

Sta. 54+14.13 @ Chapel Hill/Summerfield=
Sta. 62+38.85 @ Summerfield

6" x 12" W4xW4 WIRE FABRIC REINFORCING SHALL BE PLACED SUCH THAT THE WIRES WITH THE 6" SPACING WILL RUN PARALLEL WITH THE LONGITUDINAL JOINT.

CHAPEL HILL ADDITION

VALLEY GUTTER PLANS

Professional Engineering Consultants, P.A.
303 S. TOPEKA • WICHITA, KANSAS 67202
316-262-2691 • FAX 316-262-3003

Designed by	BER, CDD	Checked by	
Drawn by	DEP, SAD	Date	JANUARY, 2001
		Job No.	99127

DSNR_GDD OPER. DEP SCALE: 1=10.00
C:\1999\199127\000\VALGUTPLAN_06-12-2002_07:51:57.dwg