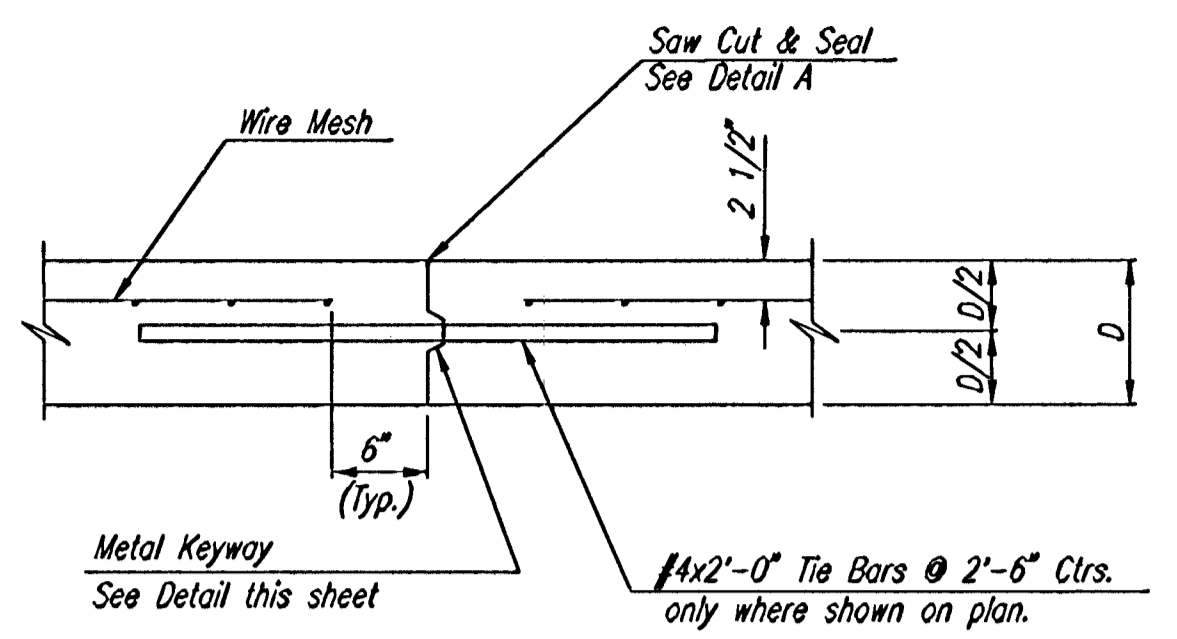
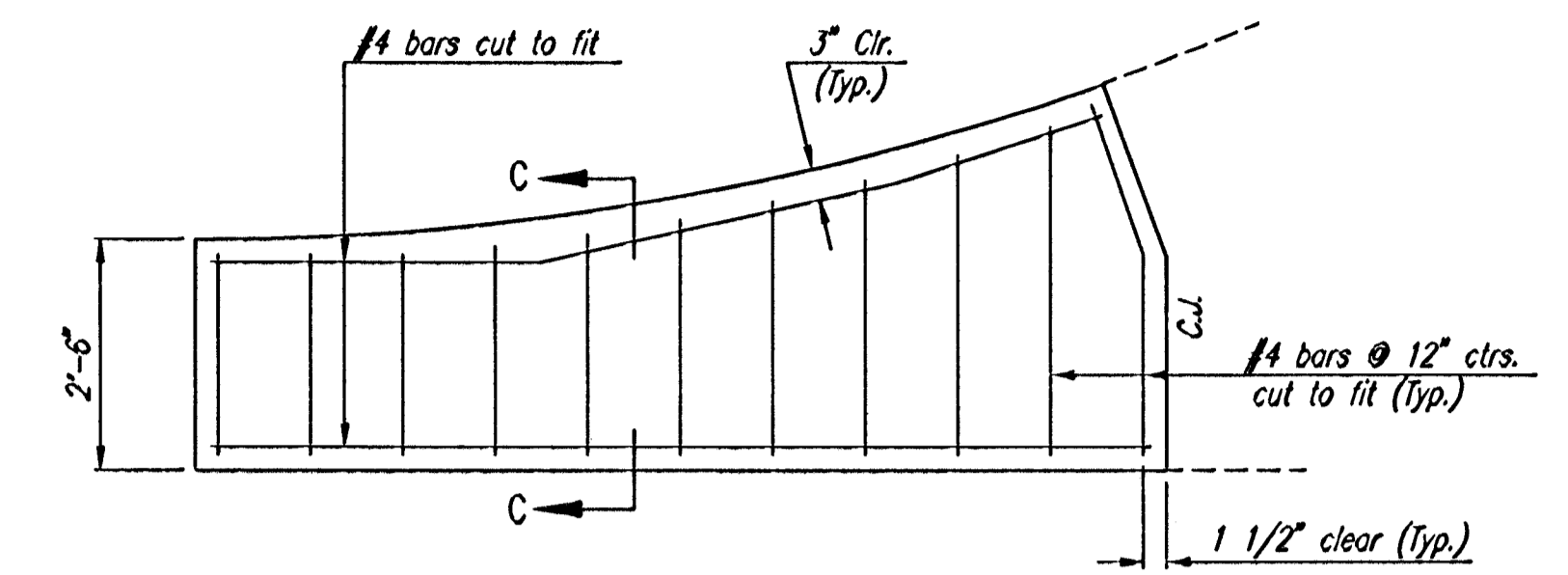


SECTION A-A

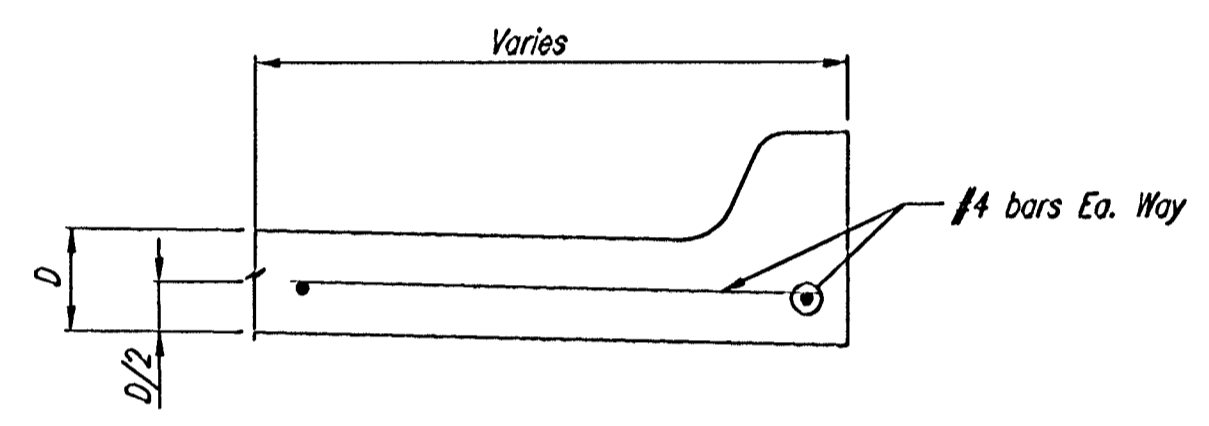
NOTE: OMIT REINFORCING MESH AT ALL JOINTS
 NOTE: ALL CONCRETE VALLEY CUTTER REINFORCEMENT SHALL BE ADEQUATELY SUPPORTED BY BAR CHAIRS IN THE REQUIRED POSITION UNLESS APPROVED OTHERWISE BY THE ENGINEER.



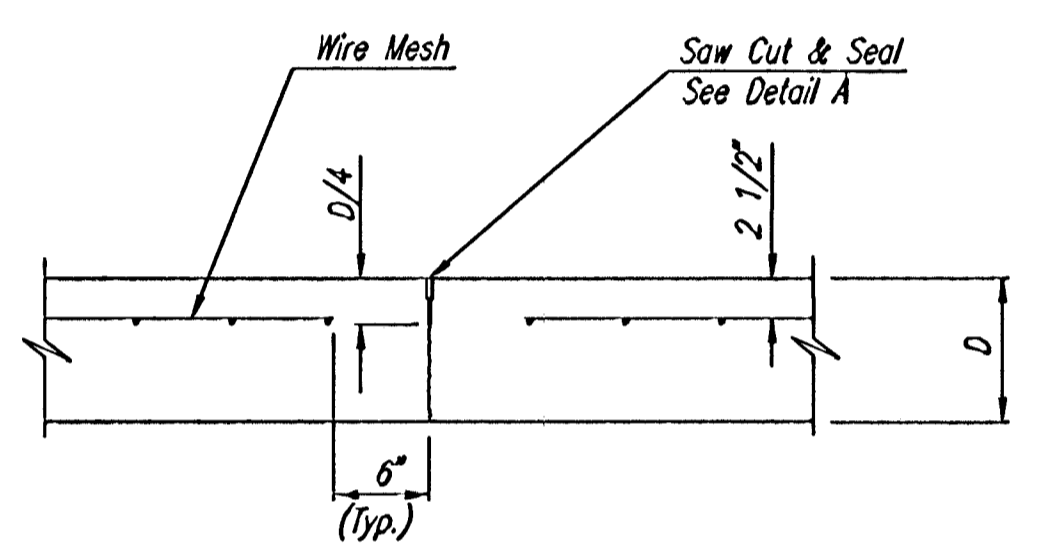
LONGITUDINAL CONSTRUCTION JOINT DETAIL
 REINFORCED PAVEMENT
 (TRANSVERSE SECTION)
 (ALTERNATE L.J.)



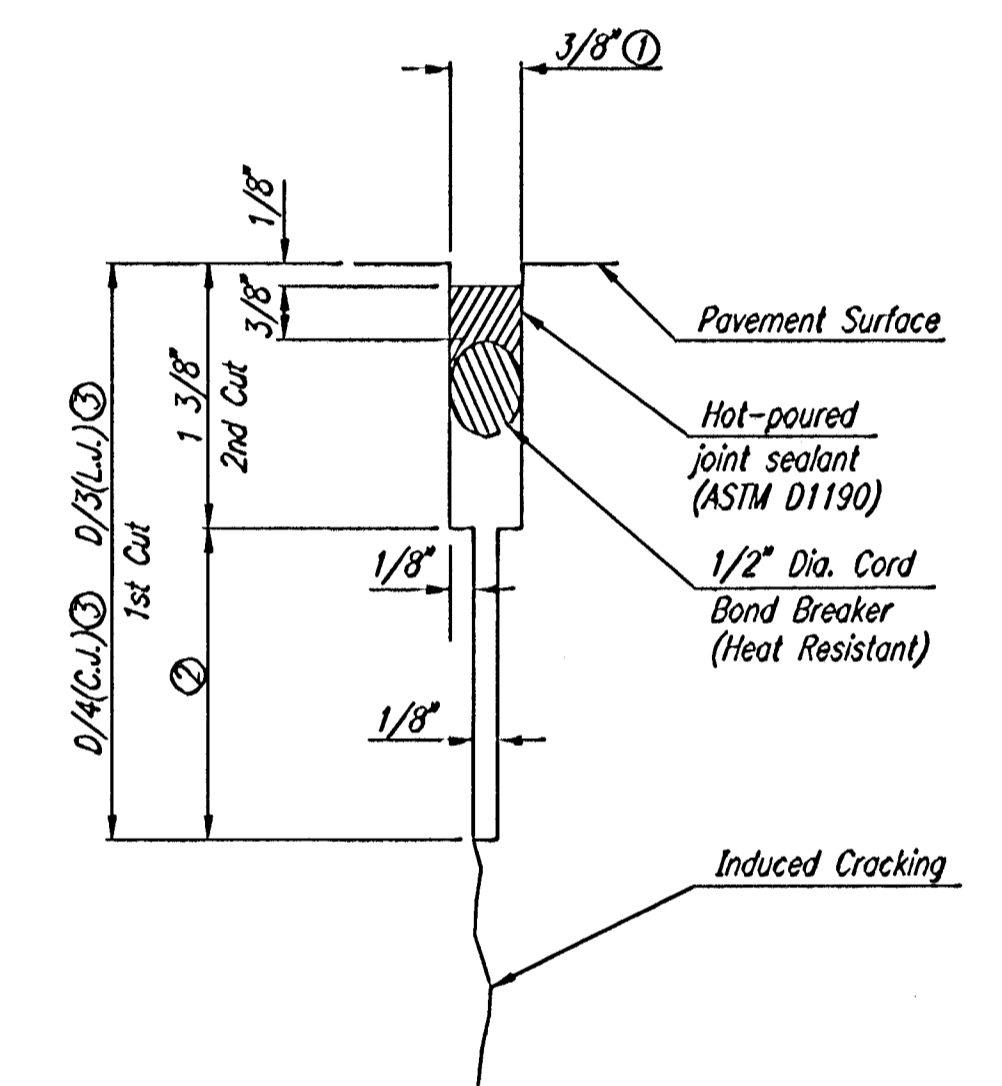
WING REINFORCING DETAIL
 NOTE: OMIT WIRE FABRIC REINFORCING IN THIS SECTION.



SECTION C-C

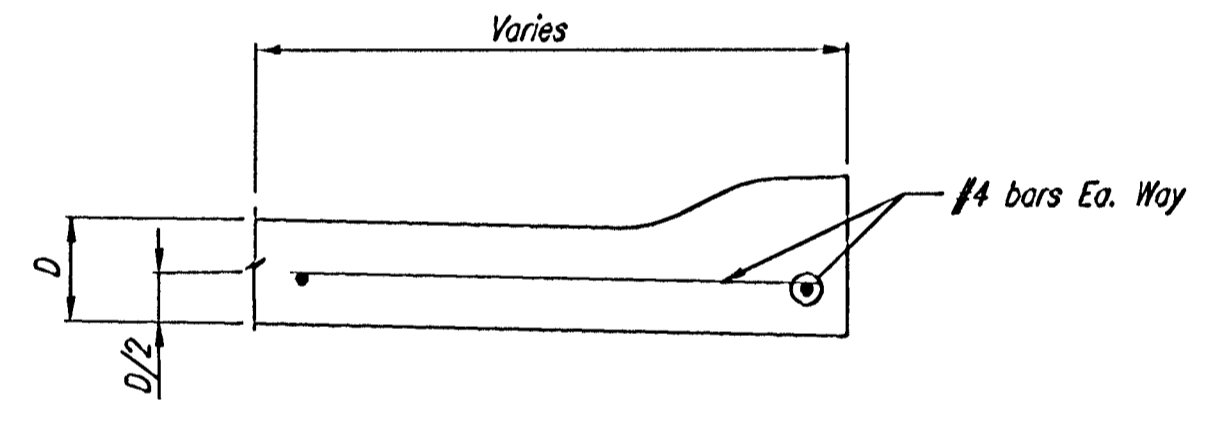


CONTRACTION JOINT DETAIL
 REINFORCED PAVEMENT
 (C.J.)

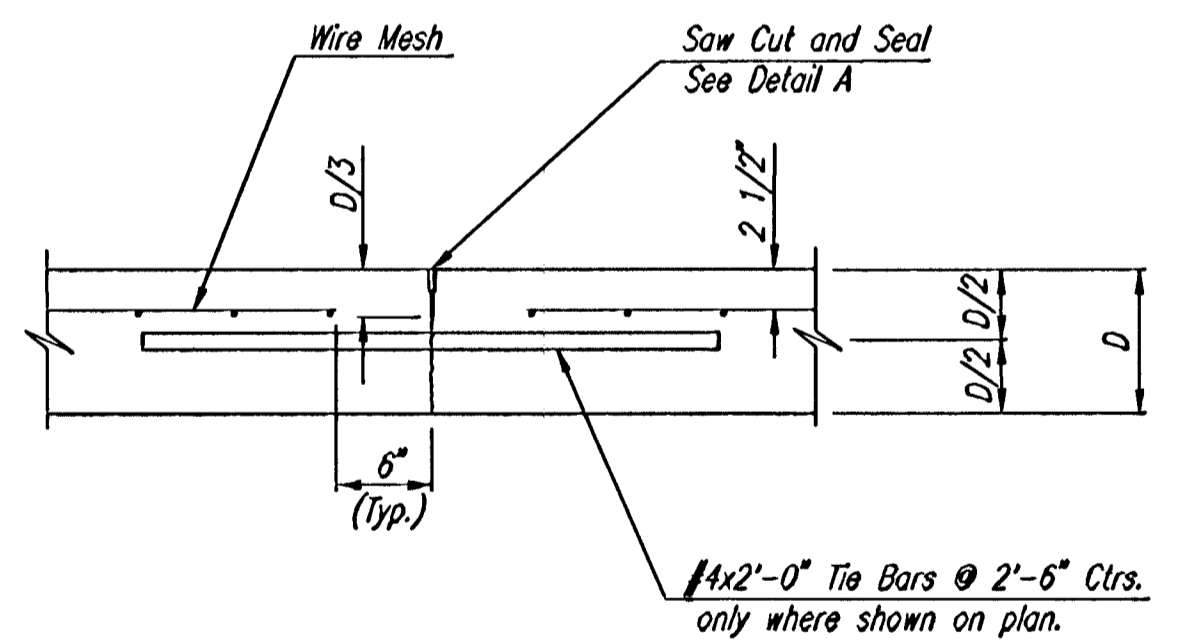


DETAIL A

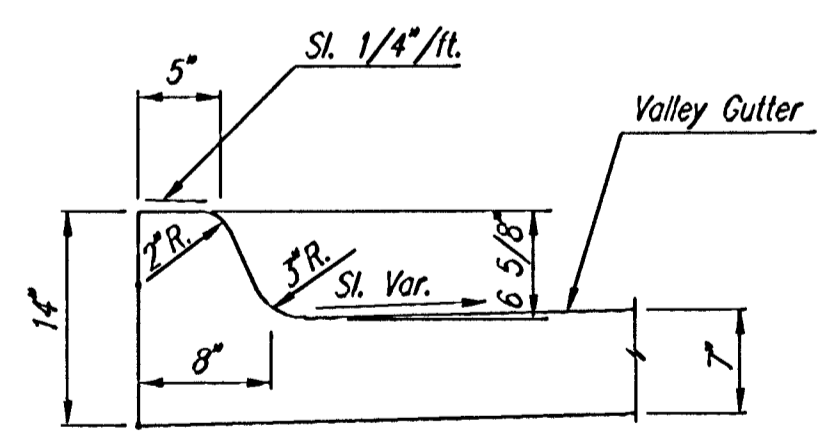
- ① To be accomplished in 2 cuts for Longitudinal Joints and Contraction Joints. Initial cut to be 1/8" wide.
- ② Eliminate bottom of cut when metal keyway is used as part of Longitudinal or Transverse Construction Joint and at Doweled Construction Joint Locations.
- ③ 1 1/2" Minimum



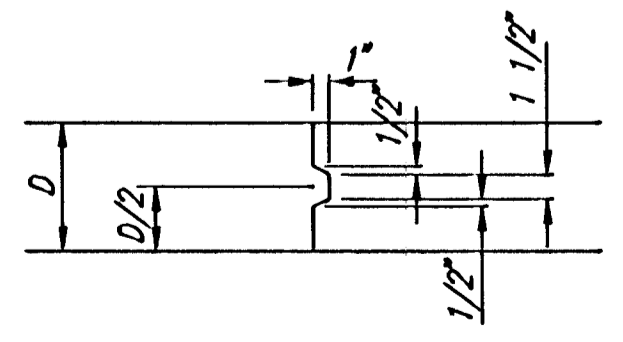
SECTION C-C
 (ROLL-TYPE CURB)



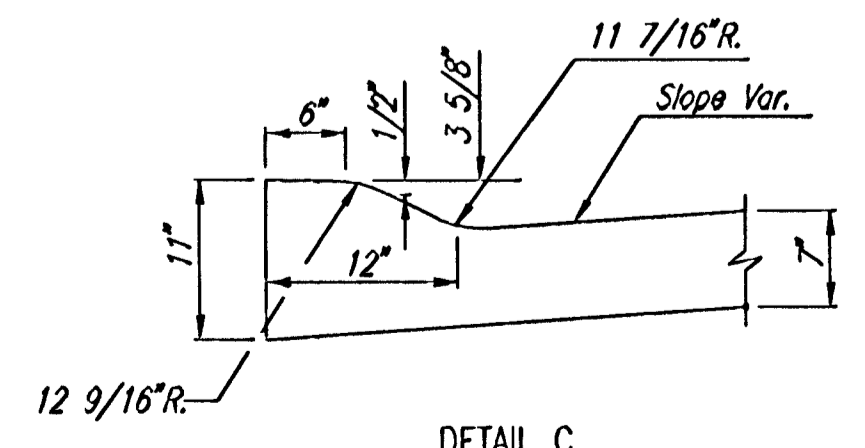
LONGITUDINAL JOINT DETAIL
 REINFORCED PAVEMENT
 (TRANSVERSE SECTION)
 (L.J.)



DETAIL B



KEYWAY DETAIL



DETAIL C
 (ROLL-TYPE CURB)

DSNR: BEB OPER: DEP SCALE: 1=10.00
 Q:\1998\99127\000\VALGUT.DWG 06-12-2002 07:55:02 am

CHAPEL HILL ADDITION

VALLEY GUTTER DETAILS

Professional Engineering Consultants, P.A.
 303 S. TOPEKA • WICHITA, KANSAS 67202
 316-262-2691 • FAX 316-262-3003

Designed by BER, GDD	Checked by
Drawn by DEP	Date JANUARY, 2001 Job No. 99127